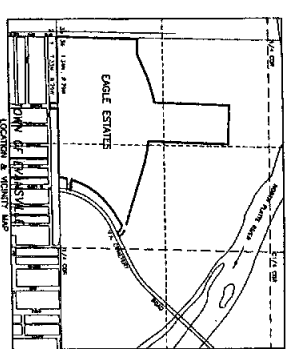
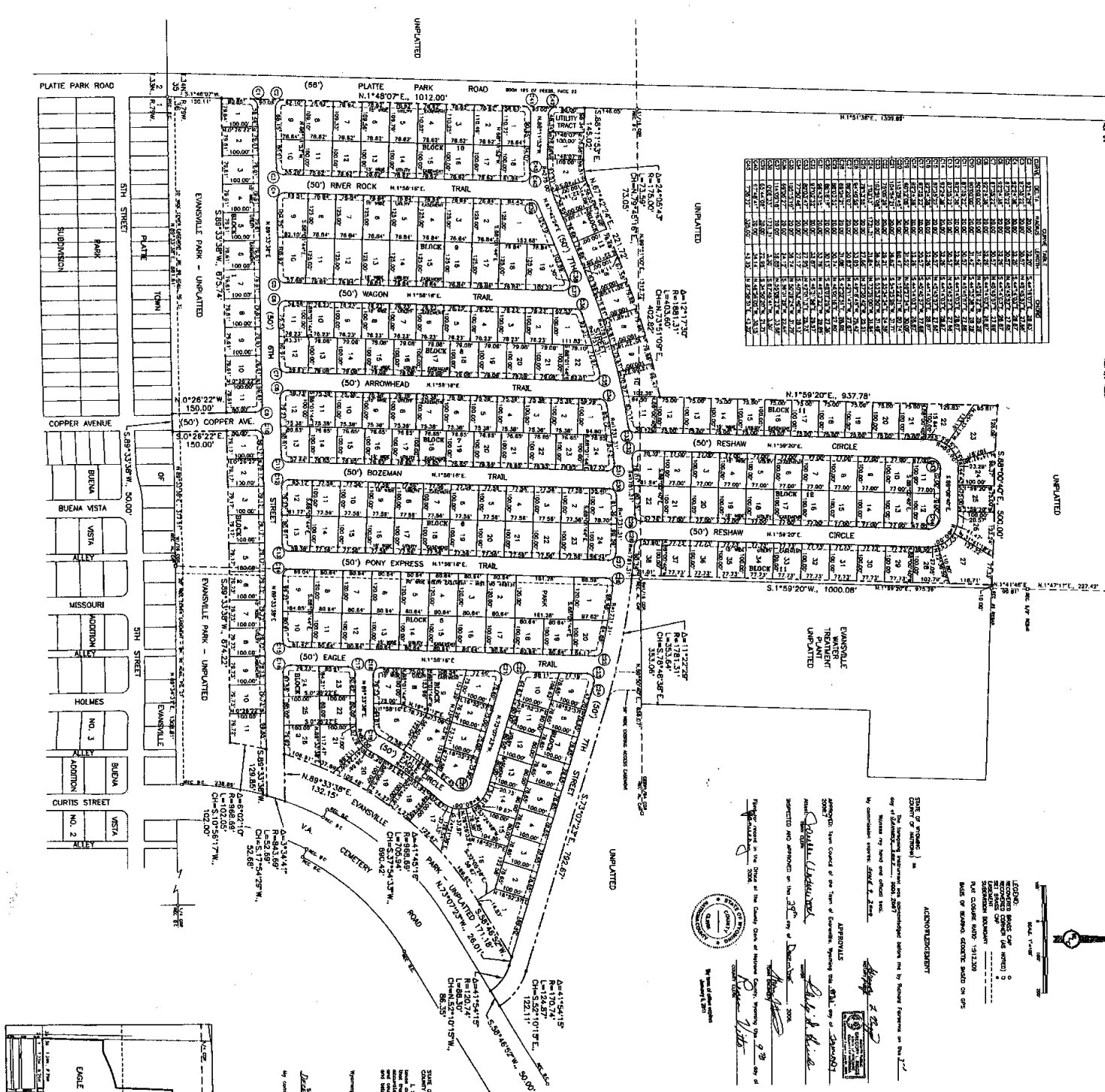


"EAGLE ESTATES"  
 PART OF  
 AN ADDITION TO THE TOWN OF EVANSVILLE  
 BEING A SUBDIVISION OF SECTIONS OF  
 THE NW1/4SW1/4 SW1/4SECTIONS OF  
 TOWNSHIP 34 NORTH RANGE 79 WEST  
 SIXTH PRINCIPAL MERIDIAN  
 MADISON COUNTY, WYOMING  
 SCALE 1"=100'

CENTRIQUE OF INDICATION  
 National Geographic, Mapping Division of Corona, Inc., Denver, Colorado, U.S.A.  
 The National Geographic Society is not responsible for the accuracy of the map.  
 The map is published by the National Geographic Society, Washington, D.C.  
 Copyright © 1979 by National Geographic Society

BLK	LOT	ACRES	AREA	PERCENT
1	1	0.0000	0.00	0.00
1	2	0.0000	0.00	0.00
1	3	0.0000	0.00	0.00
1	4	0.0000	0.00	0.00
1	5	0.0000	0.00	0.00
1	6	0.0000	0.00	0.00
1	7	0.0000	0.00	0.00
1	8	0.0000	0.00	0.00
1	9	0.0000	0.00	0.00
1	10	0.0000	0.00	0.00
1	11	0.0000	0.00	0.00
1	12	0.0000	0.00	0.00
1	13	0.0000	0.00	0.00
1	14	0.0000	0.00	0.00
1	15	0.0000	0.00	0.00
1	16	0.0000	0.00	0.00
1	17	0.0000	0.00	0.00
1	18	0.0000	0.00	0.00
1	19	0.0000	0.00	0.00
1	20	0.0000	0.00	0.00
1	21	0.0000	0.00	0.00
1	22	0.0000	0.00	0.00
1	23	0.0000	0.00	0.00
1	24	0.0000	0.00	0.00
1	25	0.0000	0.00	0.00
1	26	0.0000	0.00	0.00
1	27	0.0000	0.00	0.00
1	28	0.0000	0.00	0.00
1	29	0.0000	0.00	0.00
1	30	0.0000	0.00	0.00
1	31	0.0000	0.00	0.00
1	32	0.0000	0.00	0.00
1	33	0.0000	0.00	0.00
1	34	0.0000	0.00	0.00
1	35	0.0000	0.00	0.00
1	36	0.0000	0.00	0.00
1	37	0.0000	0.00	0.00
1	38	0.0000	0.00	0.00
1	39	0.0000	0.00	0.00
1	40	0.0000	0.00	0.00
1	41	0.0000	0.00	0.00
1	42	0.0000	0.00	0.00
1	43	0.0000	0.00	0.00
1	44	0.0000	0.00	0.00
1	45	0.0000	0.00	0.00
1	46	0.0000	0.00	0.00
1	47	0.0000	0.00	0.00
1	48	0.0000	0.00	0.00
1	49	0.0000	0.00	0.00
1	50	0.0000	0.00	0.00
1	51	0.0000	0.00	0.00
1	52	0.0000	0.00	0.00
1	53	0.0000	0.00	0.00
1	54	0.0000	0.00	0.00
1	55	0.0000	0.00	0.00
1	56	0.0000	0.00	0.00
1	57	0.0000	0.00	0.00
1	58	0.0000	0.00	0.00
1	59	0.0000	0.00	0.00
1	60	0.0000	0.00	0.00
1	61	0.0000	0.00	0.00
1	62	0.0000	0.00	0.00
1	63	0.0000	0.00	0.00
1	64	0.0000	0.00	0.00
1	65	0.0000	0.00	0.00
1	66	0.0000	0.00	0.00
1	67	0.0000	0.00	0.00
1	68	0.0000	0.00	0.00
1	69	0.0000	0.00	0.00
1	70	0.0000	0.00	0.00
1	71	0.0000	0.00	0.00
1	72	0.0000	0.00	0.00
1	73	0.0000	0.00	0.00
1	74	0.0000	0.00	0.00
1	75	0.0000	0.00	0.00
1	76	0.0000	0.00	0.00
1	77	0.0000	0.00	0.00
1	78	0.0000	0.00	0.00
1	79	0.0000	0.00	0.00
1	80	0.0000	0.00	0.00
1	81	0.0000	0.00	0.00
1	82	0.0000	0.00	0.00
1	83	0.0000	0.00	0.00
1	84	0.0000	0.00	0.00
1	85	0.0000	0.00	0.00
1	86	0.0000	0.00	0.00
1	87	0.0000	0.00	0.00
1	88	0.0000	0.00	0.00
1	89	0.0000	0.00	0.00
1	90	0.0000	0.00	0.00
1	91	0.0000	0.00	0.00
1	92	0.0000	0.00	0.00
1	93	0.0000	0.00	0.00
1	94	0.0000	0.00	0.00
1	95	0.0000	0.00	0.00
1	96	0.0000	0.00	0.00
1	97	0.0000	0.00	0.00
1	98	0.0000	0.00	0.00
1	99	0.0000	0.00	0.00
1	100	0.0000	0.00	0.00



STATE OF WYOMING )  
 ) ss. I, \_\_\_\_\_, Notary Public for and in and among the County of Madison, Wyoming, do hereby certify that the foregoing is a true and correct copy of the original as the same appears of record in my office.  
 My commission expires \_\_\_\_\_ A.D. 20\_\_  
 \_\_\_\_\_  
 Notary Public

CENTRIQUE OF INDICATION  
 National Geographic, Mapping Division of Corona, Inc., Denver, Colorado, U.S.A.  
 The National Geographic Society is not responsible for the accuracy of the map.  
 The map is published by the National Geographic Society, Washington, D.C.  
 Copyright © 1979 by National Geographic Society

Survey & Map Co.  
 200 Northpark Drive, Suite 100, Cheyenne, WY 82001  
 Phone: (307) 632-1111  
 Fax: (307) 632-1112  
 Website: www.surveyandmap.com