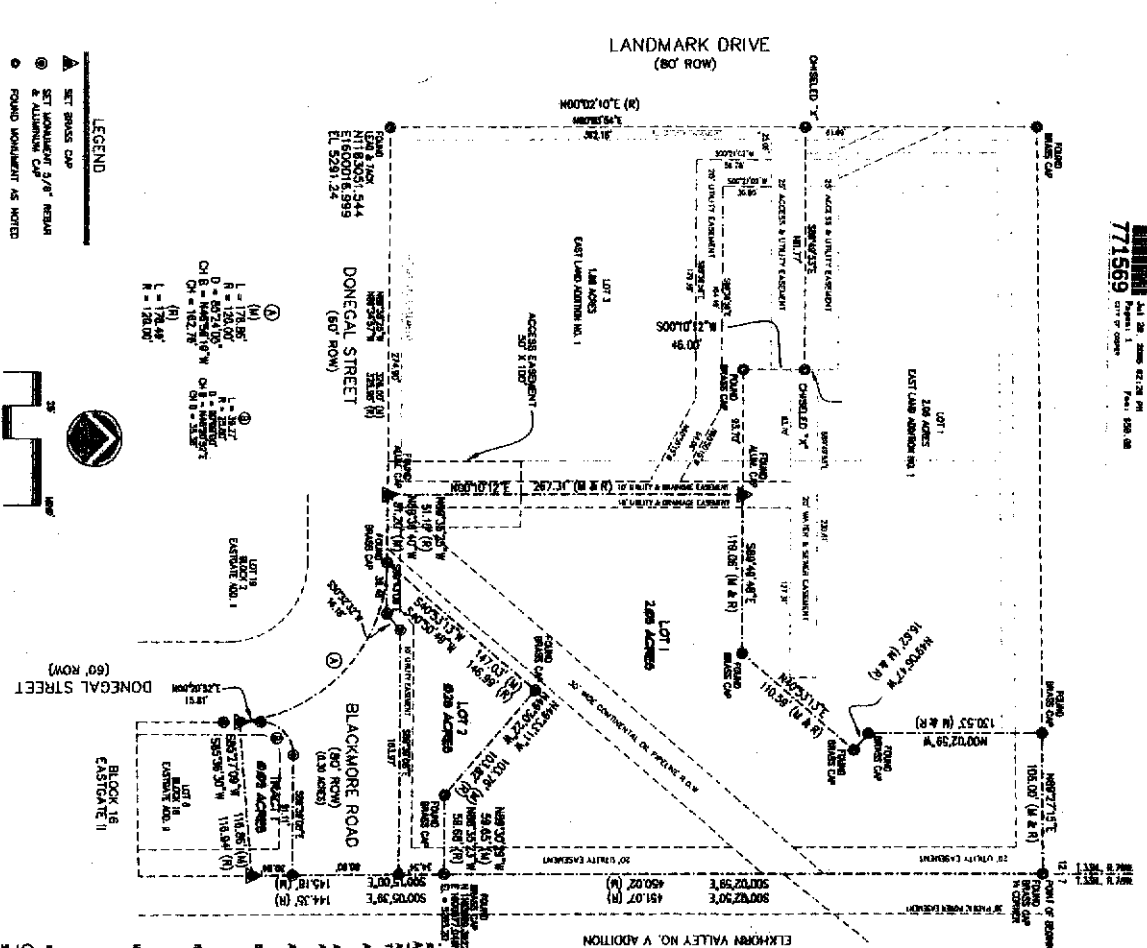


771569  
NATRONA COUNTY CLERK, CHAIRMAN  
NATRONA COUNTY CLERK, CLERK  
771569  
CITY OF CASPER  
CITY CLERK

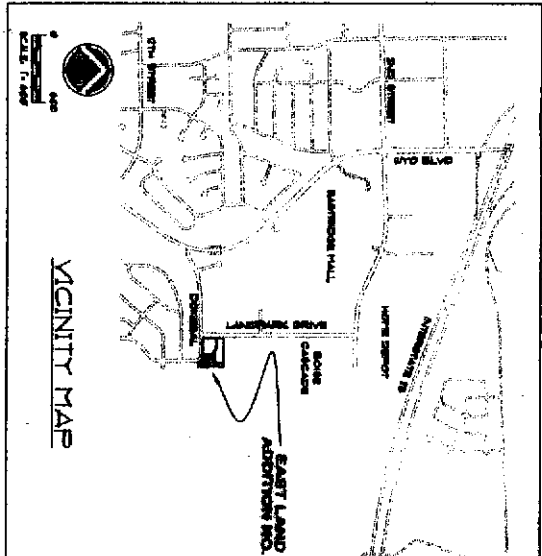


**LEGEND**  
▲ SET BRASS CAP  
● SET ALUMINUM 3/8" REBAR  
○ FOUND MONUMENT AS NOTED



**RECORDED**  
PLAT FOR RECORD IN THE OFFICE OF THE COUNTY CLERK, NATRONA COUNTY, WYOMING THIS 30<sup>TH</sup> DAY OF July, 2008.  
BY: *William R. Robinson*  
NATRONA COUNTY CLERK

**NOTES**  
1. ERROR OF CLOSE ESTIMATE: 1:44,000  
2. BASIS OF BEARINGS IS THE NORTH LINE OF BLOCK 21, EASTGATE I BEING N89°27'14"E  
3. THE CORNER PAINT AT THE CORNER EQUIDISTANT CENTER OF EAST LAND ADDITION NO. 1 IS ON N107°15'2"E AND THE COMPUTATION SCALE FACTOR IS 0.999772.



**CERTIFICATE OF SURVEYOR**  
STATE OF WYOMING } ss  
COUNTY OF NATRONA }  
I, WILLIAM R. ROBINSON, A REGISTERED PROFESSIONAL LAND SURVEYOR, LICENSE NO. 10328, DO HEREBY CERTIFY THAT THIS PLAT WAS MADE FROM NOTES TAKEN DURING AN ACTUAL SURVEY MADE UNDER MY DIRECT SUPERVISION IN JANUARY, 2008, AND THAT THIS PLAT IS THE BEST OF MY KNOWLEDGE AND BELIEF THAT THE SAME ACCURATELY REPRESENTS THE ACTUAL SURVEY AND THAT THE BEARINGS AND DISTANCES WERE MEASURED IN FEET AND DECIMALS THEREOF AND CORRECTED FOR THE EFFECTS OF TEMPERATURE AND TENSION AND THAT THE PLAT IS THE BEST OF MY KNOWLEDGE AND BELIEF THAT THE SAME ACCURATELY REPRESENTS THE ACTUAL SURVEY AND THAT THE BEARINGS AND DISTANCES WERE MEASURED IN FEET AND DECIMALS THEREOF AND CORRECTED FOR THE EFFECTS OF TEMPERATURE AND TENSION.

**APPROVALS**  
APPROVED BY THE CITY OF CASPER PLANNING AND ZONING COMMISSION OF CASPER, WYOMING, THIS 28<sup>TH</sup> DAY OF July, 2008.  
ATTEST: *[Signature]*  
CITY CLERK  
APPROVED BY THE CITY COUNCIL OF CASPER, WYOMING BY RESOLUTION NO. 06-022, PASSED, APPROVED AND APPROVED THE 28<sup>TH</sup> DAY OF July, 2008.  
ATTEST: *[Signature]*  
CITY CLERK  
APPROVED AND APPROVED THIS 28<sup>TH</sup> DAY OF July, 2008.  
ATTEST: *[Signature]*  
CITY CLERK

**CERTIFICATE OF DEDICATION**  
STATE OF WYOMING } ss  
COUNTY OF NATRONA }  
THE UNDERSIGNED, EAST LAND DEVELOPMENT, LLC AND THE CITY OF CASPER DO CERTIFY THAT THEY ARE THE OWNERS AND PROPRIETORS OF THE FOLLOWING DESCRIBED PARCEL OF LAND, A PARCEL OF LAND, BEING MORE PARTICULARLY DESCRIBED AS FOLLOWS:  
COMMENCING AT THE EAST 1/4 CORNER OF SAID SECTION 12, BEING THE NORTHEAST CORNER OF THE PARCEL MONUMENTED BY A BRASS CAP AND BEING THE POINT OF BEGINNING; THENCE S00°27'12" E, ALONG THE EAST LINE OF SAID SECTION 12, A DISTANCE OF 460.02 FEET, TO A POINT MONUMENTED BY A BRASS CAP; THENCE S00°27'12" E, ALONG THE EAST LINE OF SAID SECTION 12, A DISTANCE OF 460.02 FEET TO THE SOUTHWEST CORNER OF LOT 1, BLOCK 16, EASTGATE II ADDITION, MONUMENTED BY A BRASS CAP; THENCE S89°27'14" W, ALONG THE LINE COMMON TO LOTS 6 AND 7, BLOCK 16, EASTGATE II ADDITION, A DISTANCE OF 189.08 FEET TO THE SOUTH LINE OF SAID LOT 1, MONUMENTED BY A BRASS CAP; THENCE N107°15'2" E, ALONG THE WEST LINE OF DONEGAL STREET, A DISTANCE OF 138.55 FEET TO THE POINT OF BEGINNING. ALSO THE EAST LINE OF SAID LOT 1, EAST LAND ADDITION NO. 1, MONUMENTED BY A BRASS CAP; THENCE N00°27'15" E, ALONG THE WEST LINE OF THE PARCEL, ALSO THE EAST LINE OF SAID LOT 2, A DISTANCE OF 366.02 FEET, ALONG THE SOUTH LINE OF LOT 1, MONUMENTED BY A BRASS CAP; THENCE S89°27'14" W, ALONG THE SOUTH LINE OF LOT 1, EAST LAND ADDITION NO. 1, A DISTANCE OF 189.08 FEET TO A POINT MONUMENTED BY A BRASS CAP; THENCE S89°27'14" W, ALONG THE EAST LINE OF SAID LOT 1, A DISTANCE OF 104.00 FEET TO A POINT MONUMENTED BY A BRASS CAP; THENCE S89°27'14" W, ALONG THE EAST LINE OF SAID LOT 1, A DISTANCE OF 164.82 FEET TO A POINT MONUMENTED BY A BRASS CAP; THENCE N00°27'15" E, ALONG THE EAST LINE OF SAID LOT 1, A DISTANCE OF 104.00 FEET TO THE POINT OF BEGINNING.

**REPORT OF**  
EAST LAND ADDITION NO. 1 AND LOTS 7 & 8, BLOCK 16, EASTGATE II ADDITION  
AS  
EAST LAND ADDITION NO. 2  
TO THE CITY OF CASPER, WYOMING  
BEING A PORTION OF THE  
NE1/4SECTION 12, T.33N., R.79W., 6TH P.M.  
NATRONA COUNTY, WYOMING

*[Signature]*  
NATRONA COUNTY CLERK