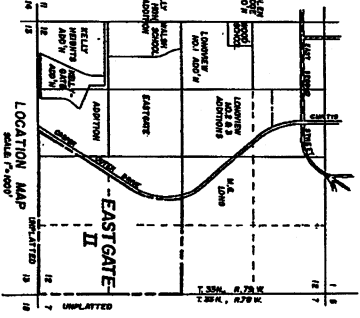
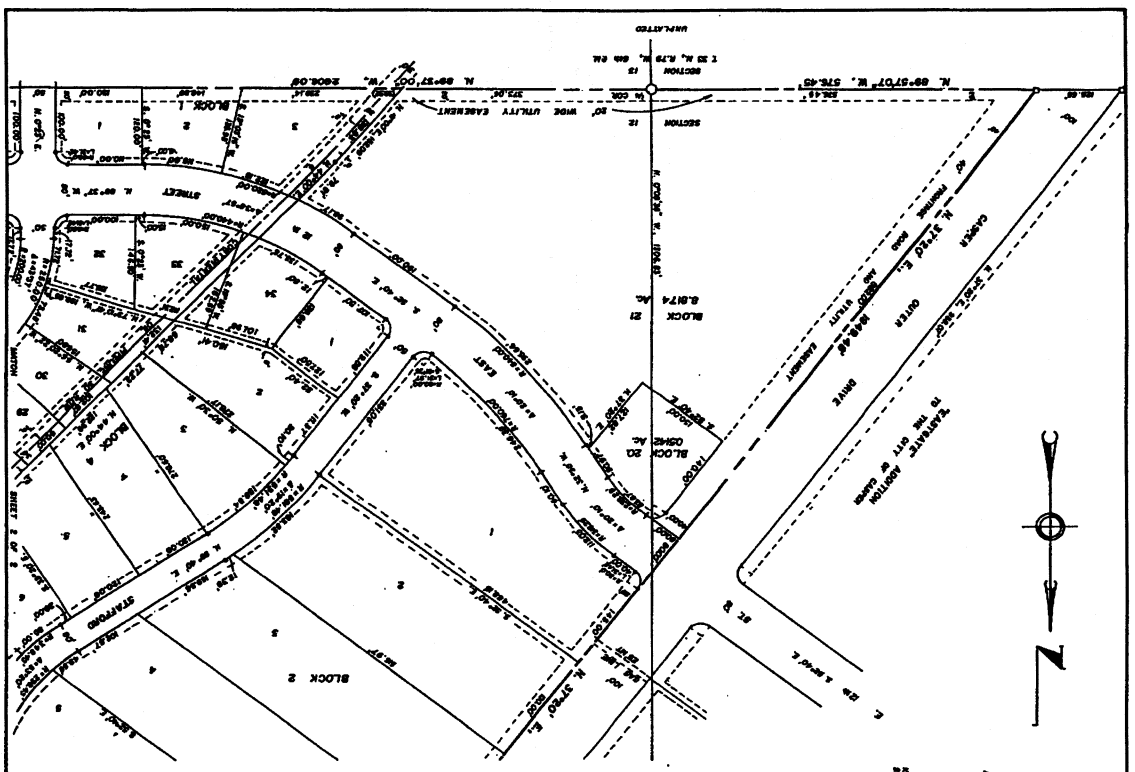


275/414

1072



APPROVALS

APPROVED: I, Mayor, City of Casper, Wyoming, do hereby certify that the plat is correct and true to the original survey, and that the same is in accordance with the laws of this State and the Constitution of the United States.

APPROVED: I, Clerk, City of Casper, Wyoming, do hereby certify that the plat is correct and true to the original survey, and that the same is in accordance with the laws of this State and the Constitution of the United States.

APPROVED: I, Recorder, County of Natrona, Wyoming, do hereby certify that the plat is correct and true to the original survey, and that the same is in accordance with the laws of this State and the Constitution of the United States.

APPROVED: I, Surveyor, State of Wyoming, do hereby certify that the plat is correct and true to the original survey, and that the same is in accordance with the laws of this State and the Constitution of the United States.

APPROVED: I, Engineer, State of Wyoming, do hereby certify that the plat is correct and true to the original survey, and that the same is in accordance with the laws of this State and the Constitution of the United States.

WORTHINGTON, LEONARD AND COMPANY, INC.
 400 NORTH 14TH STREET
 CASPER, WYOMING 82401

SECTION 10 - 6400
 PLAT OF
EASTGATE II
 AN ADDITION TO
 THE CITY OF CASPER, WYOMING
 BEING A SUBDIVISION OF THE
 SE 1/4 AND PORTIONS OF THE
 SW 1/4, SECTION 12, T33N, R79 W,
 SIXTH PRINCIPAL MERIDIAN,
 NATRONA COUNTY, WYOMING
 SCALE: 1" = 80'

CERTIFICATE OF DEDICATION

BEFORE ME, the undersigned authority, on this day personally appeared _____, known to me to be the person whose name is subscribed to the foregoing plat, and acknowledged to me that he executed the same for the purposes and consideration therein expressed.

Given under my hand and seal of office this _____ day of _____, 1918.

Notary Public for Wyoming

ACKNOWLEDGEMENT

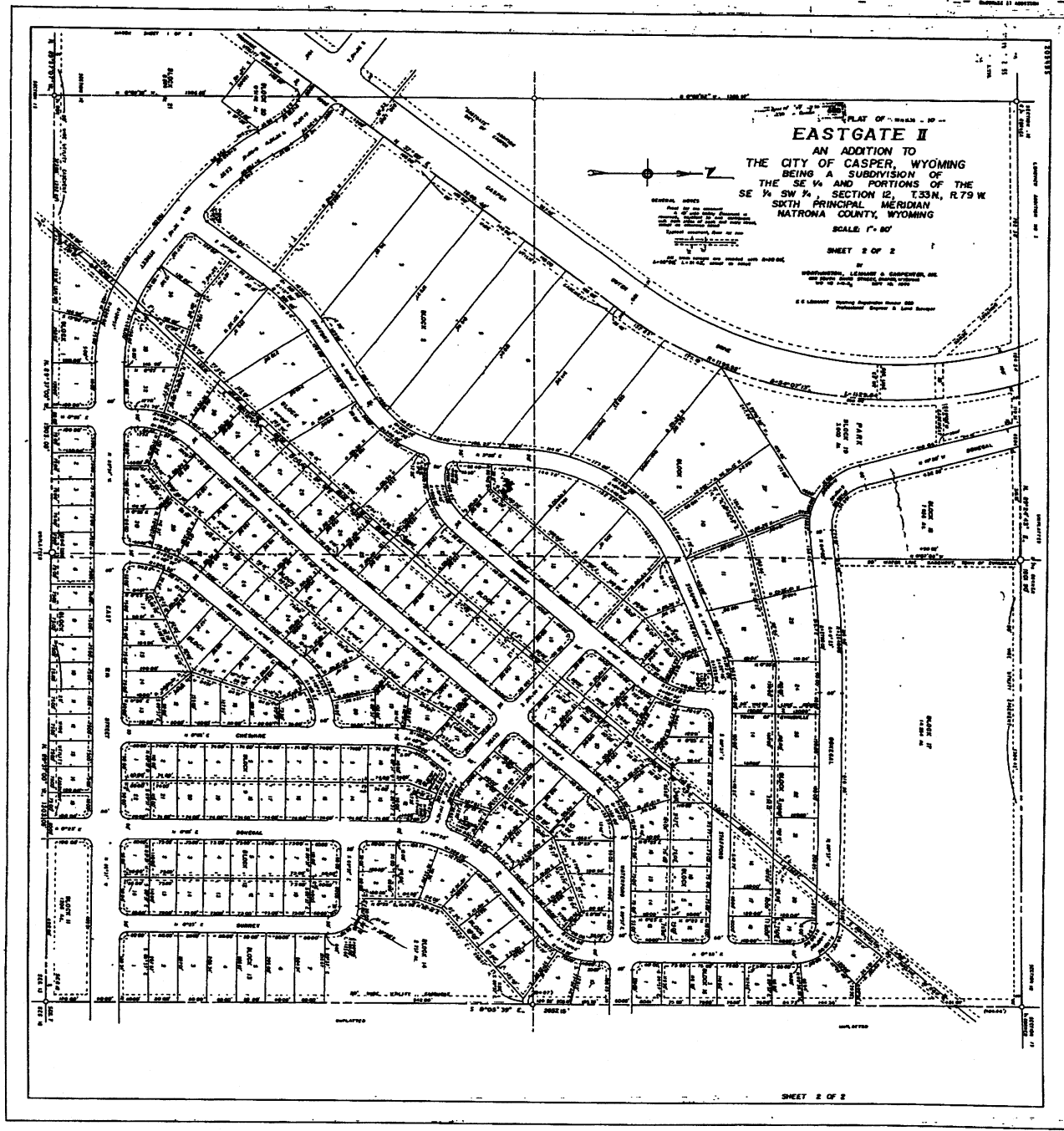
I, _____, do hereby certify that the foregoing plat is a true and correct copy of the original survey, and that the same is in accordance with the laws of this State and the Constitution of the United States.

Surveyor

CERTIFICATE OF SURVEYOR

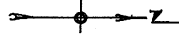
I, _____, do hereby certify that the foregoing plat is a true and correct copy of the original survey, and that the same is in accordance with the laws of this State and the Constitution of the United States.

Surveyor



EASTGATE II

AN ADDITION TO
THE CITY OF CASPER, WYOMING
BEING A SUBDIVISION OF
THE SE 1/4 AND PORTIONS OF THE
SE 1/4 SW 1/4 SECTION 12, T33N, R79W
SIXTH PRINCIPAL MERIDIAN
NATRONA COUNTY, WYOMING



GENERAL NOTES
1. THE LOTS AND BLOCKS SHOWN ON THIS PLAT ARE SUBJECT TO THE RIGHTS AND INTERESTS OF THE CITY OF CASPER, WYOMING, IN THE WATER RIGHTS AND UTILITIES OF THE CITY OF CASPER, WYOMING, AND TO THE RIGHTS AND INTERESTS OF THE CITY OF CASPER, WYOMING, IN THE WATER RIGHTS AND UTILITIES OF THE CITY OF CASPER, WYOMING.

SCALE 1" = 80'
SHEET 2 OF 2

PREPARED BY
ENGINEERING, LEASING & CONSTRUCTION CO.
1000 WEST 10TH AVENUE
CASPERS, WYOMING

REGISTERED PROFESSIONAL ENGINEER
STATE OF WYOMING

EXAMINED AND APPROVED
RECORDED IN THE OFFICE OF THE COUNTY CLERK
NATRONA COUNTY, WYOMING