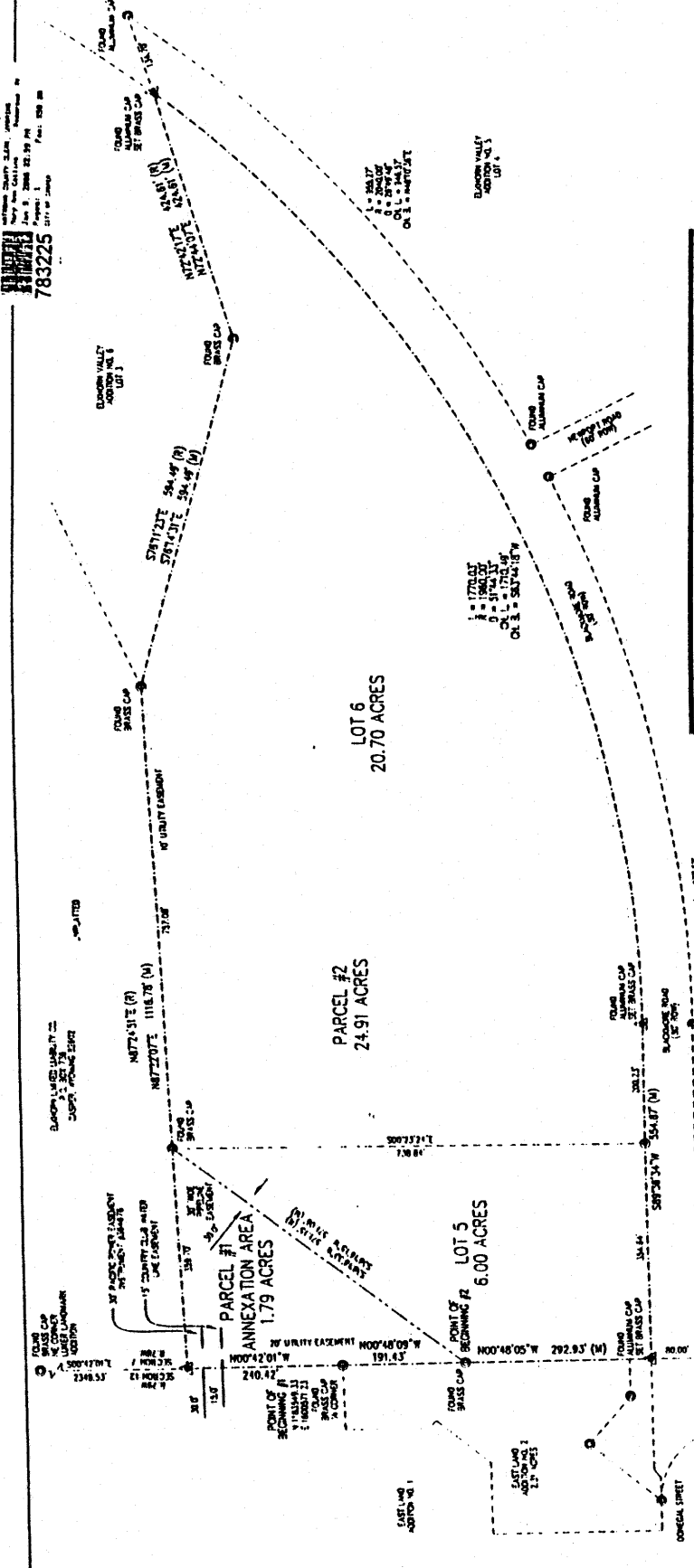


Annotation, Plat 5, Section 6 of Elkhorn Valley #5 as shown on map of January 11, 2005. Recorded January 9, 2005.

CERTIFICATE OF DEDICATION

STATE OF WYOMING
COUNTY OF NATRONA



783225
January 9, 2005
Page 1 of 2

Annotation, Plat 5, Section 6 of Elkhorn Valley #5 as shown on map of January 11, 2005. Recorded January 9, 2005.

APPROVALS
APPROVED BY THE CITY OF CASPER PLANNING AND ZONING COMMISSION OF CASPER, WYOMING
THIS 10th DAY OF March, 2005.
ATTEST: William R. Forrester
CHAIRMAN
APPROVED BY THE CITY COUNCIL OF CASPER, WYOMING BY ORDINANCE NO. 15,003, DATED PASSED,
ADOPTED AND APPROVED THIS 10th DAY OF March, 2005.
ATTEST: William R. Forrester
CITY CLERK
INSPECTED AND APPROVED THIS 10th DAY OF December, 2005. William R. Forrester
CITY ENGINEER
INSPECTED AND APPROVED THIS 12th DAY OF December, 2005. William R. Forrester
CITY SURVEYOR
INSPECTED AND APPROVED THIS 22nd DAY OF December, 2005. William R. Forrester
CITY CLERK

RECORDED
FILED FOR RECORD IN THE OFFICE OF THE COUNTY CLERK OF NATRONA COUNTY, WYOMING THIS 9th DAY OF December, 2005.
INSTRUMENT NO. 1783225
COUNTY CLERK
William R. Forrester
CITY CLERK

CERTIFICATE OF SURVEYOR
STATE OF WYOMING
COUNTY OF NATRONA
I, WILLIAM R. FORRESTER, A REGISTERED PROFESSIONAL LAND SURVEYOR LICENSE NO. 1532, DO HEREBY CERTIFY THAT I HAVE PERSONALLY EXAMINED THE SURVEY AND THAT THE SAME IS ACCURATE AND CORRECTLY AND BELIEVE CORRECTLY AND ACCURATELY REPRESENTS SAID SURVEY. ALL DIMENSIONS ARE EXPRESSED IN FEET AND DECIMALS THEREOF AND COMPRES REFERRED TO THE TRUE MERIDIAN. ALL BEING TRUE AND CORRECT TO THE BEST OF MY KNOWLEDGE AND BELIEF.
THE FOREGOING INSTRUMENT WAS ACKNOWLEDGED BEFORE ME BY WILLIAM R. FORRESTER THIS 24th DAY OF DECEMBER, 2005.
ATTEST: William R. Forrester
NOTARY PUBLIC

NOTES
1. DIMENSION OF CLOSURE EXCEEDS 1:1137:044.
2. BASIS OF BEARING IS THE WYOMING STATE PLANE COORDINATE SYSTEM, EAST CENTRAL ZONE, NAD 83/78.
3. THE COMPREHENSIVE ANGLE AT THE WEST 1/4 CORNER OF SECTION 7 IS 0°45'31.18", AND THE COMBINATION SCALE FACTOR IS 0.9997782.

LEGEND
▲ SET BRASS CAP
○ SET ANCHORS, 5/8" REBAR
□ ALLUMINUM CAP
○ FOUND MONUMENT AS NOTED

ANNEXATION AND PLAT OF 1.79 ACRES BEING A PORTION OF THE NW 1/4 SW 1/4 AND THE SW 1/4 SW 1/4, SECTION 7, T.33N., R.78W.
AND A REPLAT OF
LOT 5, ELKHORN VALLEY ADDITION NO. 5
AS

ELKHORN VALLEY ADDITION NO. 5, LOTS 5 & 6
TO THE CITY OF CASPER, WYOMING
BEING A PORTION OF THE
N 1/4 SW 1/4 OF SECTION 7
T.33N., R.78W., 8TH P.M.
NATRONA COUNTY, WYOMING

EAST LAND DEVELOPMENT COMPANY
P.O. BOX 3003
CASPER, WYOMING 82402
NELA A. MAHURTY - MANAGING PARTNER
THE FOREGOING INSTRUMENT WAS ACKNOWLEDGED BEFORE ME BY NELA A. MAHURTY ALSO KNOWN AS HER SUBJECT, THIS 10th DAY OF December, 2005.
WITNESS MY HAND AND OFFICIAL SEAL
AT CASPER, WYOMING
NOTARY PUBLIC
William R. Forrester

STATE OF WYOMING
COUNTY OF NATRONA

ELKHORN VALLEY ADDITION NO. 5
AND A REPLAT OF
LOT 5, ELKHORN VALLEY ADDITION NO. 5
AS

ELKHORN VALLEY ADDITION NO. 5

C.E.D.I.
Casper, Wyoming