

CERTIFICATE OF DEDICATION

STATE OF WYOMING }
COUNTY OF NATRONA } SS

THE UNDERSIGNED EAST LAND DEVELOPMENT COMPANY, INC. HAS HEREBY DEVOTED TO THE PUBLIC USE, OWNERSHIP AND PROPRIETARY INTEREST OF THE FOLLOWING DESCRIBED PARCELS OF LAND, TOGETHER WITH THE RIGHTS AND INTERESTS THEREIN, BEING MORE PARTICULARLY DESCRIBED AS FOLLOWS:

PARCEL #1:
COMMENCING AT THE WEST 1/4 CORNER OF SAID SECTION 7, MONUMENTED BY A BRASS CAP;
THENCE S89°48'23"W A DISTANCE OF 188.88 FEET TO THE SOUTHWEST CORNER OF THE PARCEL, MONUMENTED BY A BRASS CAP AND BEING THE POINT OF BEGINNING;
THENCE S15°06'23"W ALONG THE LINE OF ELKHORN VALLEY ADDITION NO. 5, A DISTANCE OF 584.48 FEET TO A CORNER, MONUMENTED BY A BRASS CAP;
THENCE N89°30'07"E A DISTANCE OF 770.88 FEET TO A CORNER MONUMENTED BY A BRASS CAP;
THENCE N83°30'07"E A DISTANCE OF 873.78 FEET TO A CORNER MONUMENTED BY A BRASS CAP, LOCATED ON THE SOUTH SOUTHWEST CORNER OF EAST SECOND STREET, MONUMENTED BY A BRASS CAP;
THENCE S74°44'17"E ALONG THE SOUTH LINE OF EAST SECOND STREET, A DISTANCE OF 780.15 FEET TO THE NORTHWEST CORNER OF THE PARCEL, MONUMENTED BY A BRASS CAP;
THENCE S10°13'17"W A DISTANCE OF 1197.44 FEET TO THE SOUTHWEST CORNER OF THE PARCEL, MONUMENTED BY A BRASS CAP;
THENCE S15°06'23"W ALONG THE LINE OF ELKHORN VALLEY ADDITION NO. 5, A DISTANCE OF 584.48 FEET TO THE SOUTHWEST CORNER OF THE PARCEL, LOCATED ON THE EASTERN LINE OF ELKHORN VALLEY ADDITION NO. 5, MONUMENTED BY A BRASS CAP;
THENCE S15°06'23"W ALONG THE EASTERN LINE OF ELKHORN VALLEY ADDITION NO. 5, TO A POINT OF CURVATURE, MONUMENTED BY A BRASS CAP;
THENCE S15°06'23"W ALONG THE EASTERN LINE OF ELKHORN VALLEY ADDITION NO. 5, TO A POINT OF CURVATURE, MONUMENTED BY A BRASS CAP, A DISTANCE OF 445.00 FEET, WITH A CHORD BEARING OF N15°33'08"W, A DISTANCE OF 445.00 FEET TO THE POINT OF BEGINNING.

PARCEL #2:
THENCE S74°44'17"E ALONG THE NORTH LINE OF ELKHORN VALLEY ADDITION NO. 5, A DISTANCE OF 584.48 FEET TO A POINT, MONUMENTED BY A BRASS CAP;
THENCE S74°44'17"E A DISTANCE OF 584.48 FEET TO THE POINT OF BEGINNING.
THENCE S74°44'17"E ALONG THE NORTH LINE OF ELKHORN VALLEY ADDITION NO. 5, A DISTANCE OF 584.48 FEET TO A POINT, MONUMENTED BY A BRASS CAP;
THENCE S74°44'17"E A DISTANCE OF 584.48 FEET TO THE POINT OF BEGINNING.
THENCE S74°44'17"E ALONG THE NORTH LINE OF ELKHORN VALLEY ADDITION NO. 5, A DISTANCE OF 584.48 FEET TO A POINT, MONUMENTED BY A BRASS CAP;
THENCE S74°44'17"E A DISTANCE OF 584.48 FEET TO THE POINT OF BEGINNING.
THENCE S74°44'17"E ALONG THE NORTH LINE OF ELKHORN VALLEY ADDITION NO. 5, A DISTANCE OF 584.48 FEET TO A POINT, MONUMENTED BY A BRASS CAP;
THENCE S74°44'17"E A DISTANCE OF 584.48 FEET TO THE POINT OF BEGINNING.
THENCE S74°44'17"E ALONG THE NORTH LINE OF ELKHORN VALLEY ADDITION NO. 5, A DISTANCE OF 584.48 FEET TO A POINT, MONUMENTED BY A BRASS CAP;
THENCE S74°44'17"E A DISTANCE OF 584.48 FEET TO THE POINT OF BEGINNING.

PARCEL #3:
THENCE S74°44'17"E ALONG THE NORTH LINE OF ELKHORN VALLEY ADDITION NO. 5, A DISTANCE OF 584.48 FEET TO A POINT, MONUMENTED BY A BRASS CAP;
THENCE S74°44'17"E A DISTANCE OF 584.48 FEET TO THE POINT OF BEGINNING.
THENCE S74°44'17"E ALONG THE NORTH LINE OF ELKHORN VALLEY ADDITION NO. 5, A DISTANCE OF 584.48 FEET TO A POINT, MONUMENTED BY A BRASS CAP;
THENCE S74°44'17"E A DISTANCE OF 584.48 FEET TO THE POINT OF BEGINNING.
THENCE S74°44'17"E ALONG THE NORTH LINE OF ELKHORN VALLEY ADDITION NO. 5, A DISTANCE OF 584.48 FEET TO A POINT, MONUMENTED BY A BRASS CAP;
THENCE S74°44'17"E A DISTANCE OF 584.48 FEET TO THE POINT OF BEGINNING.

PARCEL #4:
THENCE S74°44'17"E ALONG THE NORTH LINE OF ELKHORN VALLEY ADDITION NO. 5, A DISTANCE OF 584.48 FEET TO A POINT, MONUMENTED BY A BRASS CAP;
THENCE S74°44'17"E A DISTANCE OF 584.48 FEET TO THE POINT OF BEGINNING.
THENCE S74°44'17"E ALONG THE NORTH LINE OF ELKHORN VALLEY ADDITION NO. 5, A DISTANCE OF 584.48 FEET TO A POINT, MONUMENTED BY A BRASS CAP;
THENCE S74°44'17"E A DISTANCE OF 584.48 FEET TO THE POINT OF BEGINNING.

PARCEL #5:
THENCE S74°44'17"E ALONG THE NORTH LINE OF ELKHORN VALLEY ADDITION NO. 5, A DISTANCE OF 584.48 FEET TO A POINT, MONUMENTED BY A BRASS CAP;
THENCE S74°44'17"E A DISTANCE OF 584.48 FEET TO THE POINT OF BEGINNING.
THENCE S74°44'17"E ALONG THE NORTH LINE OF ELKHORN VALLEY ADDITION NO. 5, A DISTANCE OF 584.48 FEET TO A POINT, MONUMENTED BY A BRASS CAP;
THENCE S74°44'17"E A DISTANCE OF 584.48 FEET TO THE POINT OF BEGINNING.

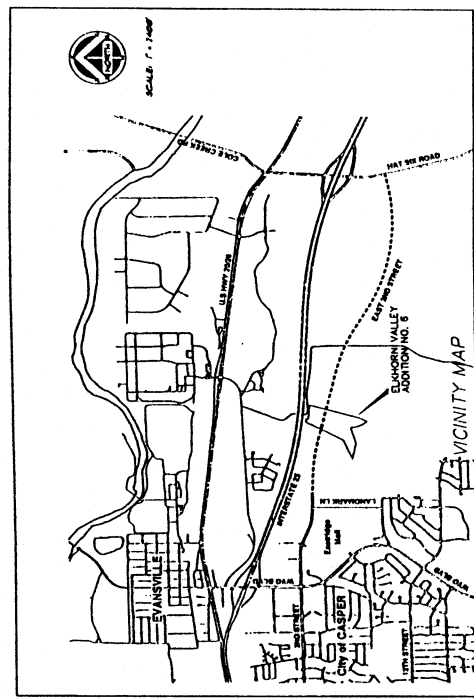
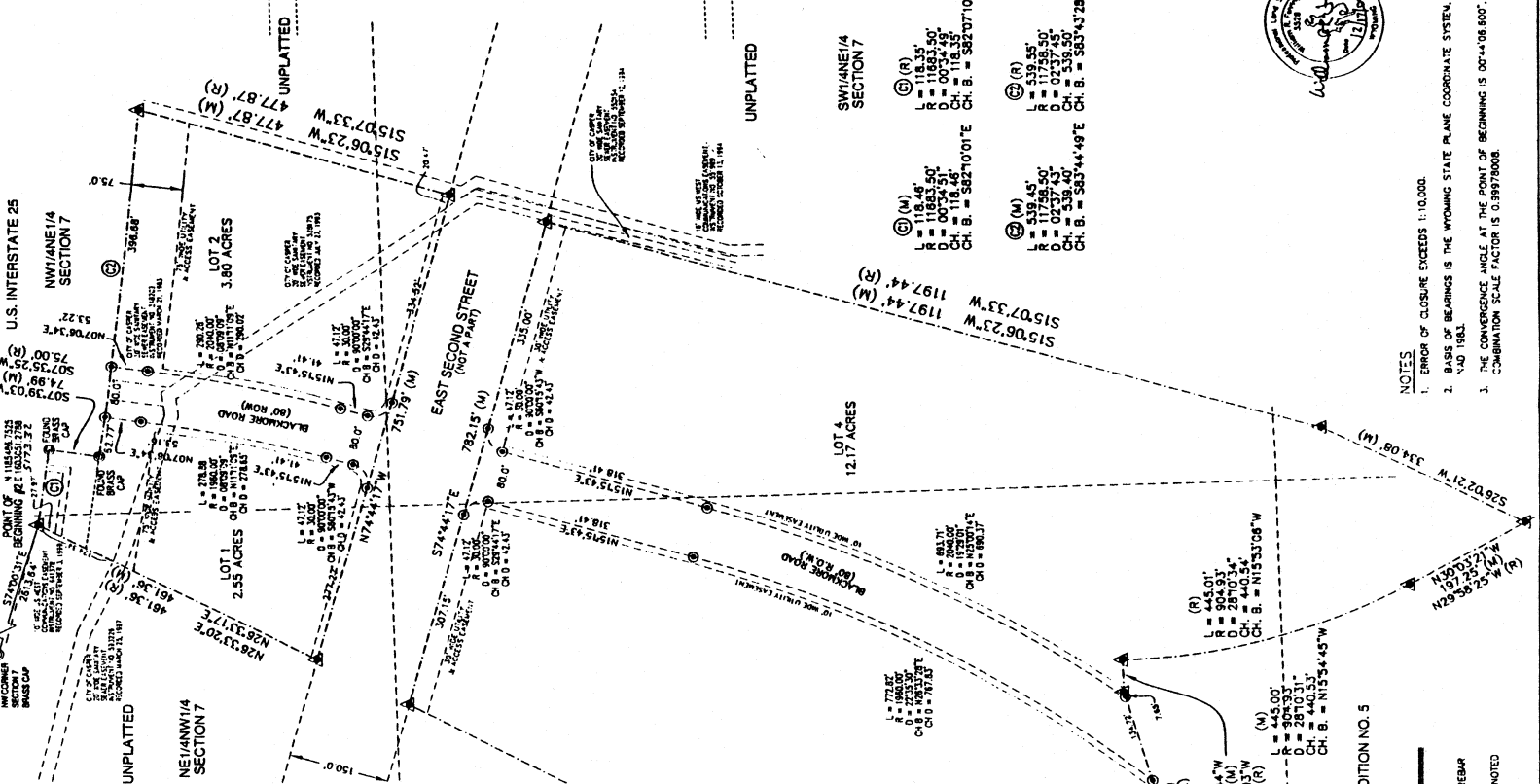
PARCEL #6:
THENCE S74°44'17"E ALONG THE NORTH LINE OF ELKHORN VALLEY ADDITION NO. 5, A DISTANCE OF 584.48 FEET TO A POINT, MONUMENTED BY A BRASS CAP;
THENCE S74°44'17"E A DISTANCE OF 584.48 FEET TO THE POINT OF BEGINNING.
THENCE S74°44'17"E ALONG THE NORTH LINE OF ELKHORN VALLEY ADDITION NO. 5, A DISTANCE OF 584.48 FEET TO A POINT, MONUMENTED BY A BRASS CAP;
THENCE S74°44'17"E A DISTANCE OF 584.48 FEET TO THE POINT OF BEGINNING.

PARCEL #7:
THENCE S74°44'17"E ALONG THE NORTH LINE OF ELKHORN VALLEY ADDITION NO. 5, A DISTANCE OF 584.48 FEET TO A POINT, MONUMENTED BY A BRASS CAP;
THENCE S74°44'17"E A DISTANCE OF 584.48 FEET TO THE POINT OF BEGINNING.
THENCE S74°44'17"E ALONG THE NORTH LINE OF ELKHORN VALLEY ADDITION NO. 5, A DISTANCE OF 584.48 FEET TO A POINT, MONUMENTED BY A BRASS CAP;
THENCE S74°44'17"E A DISTANCE OF 584.48 FEET TO THE POINT OF BEGINNING.

PARCEL #8:
THENCE S74°44'17"E ALONG THE NORTH LINE OF ELKHORN VALLEY ADDITION NO. 5, A DISTANCE OF 584.48 FEET TO A POINT, MONUMENTED BY A BRASS CAP;
THENCE S74°44'17"E A DISTANCE OF 584.48 FEET TO THE POINT OF BEGINNING.
THENCE S74°44'17"E ALONG THE NORTH LINE OF ELKHORN VALLEY ADDITION NO. 5, A DISTANCE OF 584.48 FEET TO A POINT, MONUMENTED BY A BRASS CAP;
THENCE S74°44'17"E A DISTANCE OF 584.48 FEET TO THE POINT OF BEGINNING.

PARCEL #9:
THENCE S74°44'17"E ALONG THE NORTH LINE OF ELKHORN VALLEY ADDITION NO. 5, A DISTANCE OF 584.48 FEET TO A POINT, MONUMENTED BY A BRASS CAP;
THENCE S74°44'17"E A DISTANCE OF 584.48 FEET TO THE POINT OF BEGINNING.
THENCE S74°44'17"E ALONG THE NORTH LINE OF ELKHORN VALLEY ADDITION NO. 5, A DISTANCE OF 584.48 FEET TO A POINT, MONUMENTED BY A BRASS CAP;
THENCE S74°44'17"E A DISTANCE OF 584.48 FEET TO THE POINT OF BEGINNING.

PARCEL #10:
THENCE S74°44'17"E ALONG THE NORTH LINE OF ELKHORN VALLEY ADDITION NO. 5, A DISTANCE OF 584.48 FEET TO A POINT, MONUMENTED BY A BRASS CAP;
THENCE S74°44'17"E A DISTANCE OF 584.48 FEET TO THE POINT OF BEGINNING.
THENCE S74°44'17"E ALONG THE NORTH LINE OF ELKHORN VALLEY ADDITION NO. 5, A DISTANCE OF 584.48 FEET TO A POINT, MONUMENTED BY A BRASS CAP;
THENCE S74°44'17"E A DISTANCE OF 584.48 FEET TO THE POINT OF BEGINNING.



APPROVALS
APPROVED BY THE CITY COUNCIL OF CASPER, WYOMING AND ZONING COMMISSION OF CASPER, WYOMING
THIS 20th DAY OF February, 2005.
ATTEST: *[Signature]* SECRETARY
APPROVED BY THE CITY COUNCIL OF CASPER, WYOMING BY ORDINANCE NO. 2005-4, DULY PASSED.
ATTEST: *[Signature]* CITY CLERK
APPROVED BY THE BOARD OF COUNTY COMMISSIONERS OF NATRONA COUNTY, WYOMING BY RESOLUTION DULY PASSED, ADOPTED AND APPROVED THIS 20th DAY OF February, 2005.
ATTEST: *[Signature]* COUNTY CLERK
INSPECTED AND APPROVED THIS 20th DAY OF February, 2005.
INSPECTED AND APPROVED THIS 4th DAY OF January, 2005.
RECORDED
FILED FOR RECORD IN THE OFFICE OF THE COUNTY CLERK OF NATRONA COUNTY, WYOMING THIS 4th DAY OF February, 2005.
INSTRUMENT NO. 760111
COUNTY CLERK
NOTARY PUBLIC

ELKHORN VALLEY ADDITION NO. 6
ANNEXATION AND PLAT OF
TO THE CITY OF CASPER, WYOMING
BEING A PORTION OF THE
E1/NW1/4, W1/2NE1/4, NW1/4SE1/4
OF SECTION 7, T.33N., R.78W., S.7th P.M.
NATRONA COUNTY WYOMING

NOTES
1. ERROR OF CLOSURE EXCEEDS 1:10,000.
2. BASIS OF BEARING IS THE WYOMING STATE PLANE COORDINATE SYSTEM, EAST CENTRAL ZONE, NAD 1983.
3. THE CONVERGENCE ANGLE AT THE POINT OF BEGINNING IS 00°44'08.600" AND THE COMBINATION SCALE FACTOR IS 0.99978008.

LEGEND
SET BRASS CAP
SET MONUMENT 5/8" REBAR
SET MONUMENT 1/2" REBAR
SET MONUMENT 1/4" REBAR

C.E.P.I.
Civil Engineering Professionals, Inc.
1331 West 14th Street, Casper, Wyoming 82401
(307) 234-4444 • (307) 234-9883 fax

760111
NATRONA COUNTY CLERK, WYOMING
Filed for Record
February 4, 2005 11:29 AM
Page: 1
City of Casper Fee: \$50.00

