

NOTE: ALL LOT CORNERS, P.C.'S AND P.I.'S SHALL BE MONUMENTED BY 5/8" REINFORCED ALUMINUM CORNERS UPON COMPLETION OF CONSTRUCTION.

LEGEND
 RECOVERED BRASS CAP
 SET BRASS CAP
 BOUNDARY
 UNPLANNED

RECORDED BEARING & DISTANCE
 (N.64°32'30"E, 469.86)
 RECORDED BEARING & DISTANCE
 (N.64°32'30"E, 469.86)

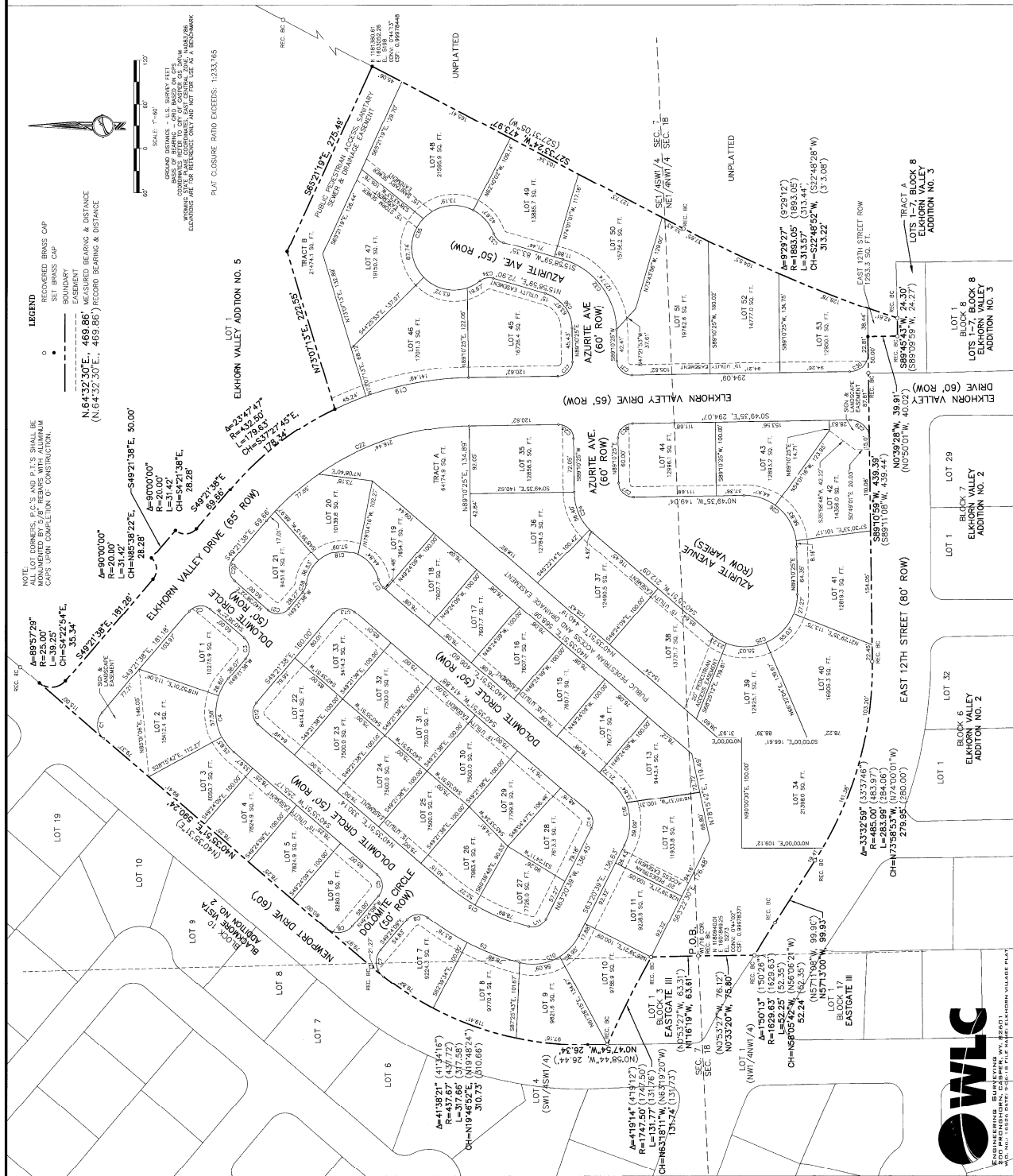
PLAT CLOSURE ERROR EXCEEDS: 1:233.165

SCALE: 1"=60'
 0 50 100

RECORDING INFORMATION
 RECORDING OFFICE
 COUNTY OF CASPER, WYOMING

WLC
 Engineering
 1000 N. Durbin
 Casper, WY 82401
 TEL: 307.234.1100
 FAX: 307.234.1101

Curve #	Delta	Radius	Length	Chords
C1	90°00'00"	20.00	31.42	31.42
C2	90°00'00"	20.00	31.42	31.42
C3	90°00'00"	20.00	31.42	31.42
C4	90°00'00"	20.00	31.42	31.42
C5	90°00'00"	20.00	31.42	31.42
C6	90°00'00"	20.00	31.42	31.42
C7	90°00'00"	20.00	31.42	31.42
C8	90°00'00"	20.00	31.42	31.42
C9	90°00'00"	20.00	31.42	31.42
C10	90°00'00"	20.00	31.42	31.42
C11	90°00'00"	20.00	31.42	31.42
C12	90°00'00"	20.00	31.42	31.42
C13	90°00'00"	20.00	31.42	31.42
C14	90°00'00"	20.00	31.42	31.42
C15	90°00'00"	20.00	31.42	31.42
C16	90°00'00"	20.00	31.42	31.42
C17	90°00'00"	20.00	31.42	31.42
C18	90°00'00"	20.00	31.42	31.42
C19	90°00'00"	20.00	31.42	31.42
C20	90°00'00"	20.00	31.42	31.42
C21	90°00'00"	20.00	31.42	31.42
C22	90°00'00"	20.00	31.42	31.42
C23	90°00'00"	20.00	31.42	31.42
C24	90°00'00"	20.00	31.42	31.42
C25	90°00'00"	20.00	31.42	31.42
C26	90°00'00"	20.00	31.42	31.42
C27	90°00'00"	20.00	31.42	31.42
C28	90°00'00"	20.00	31.42	31.42
C29	90°00'00"	20.00	31.42	31.42
C30	90°00'00"	20.00	31.42	31.42
C31	90°00'00"	20.00	31.42	31.42
C32	90°00'00"	20.00	31.42	31.42
C33	90°00'00"	20.00	31.42	31.42
C34	90°00'00"	20.00	31.42	31.42
C35	90°00'00"	20.00	31.42	31.42
C36	90°00'00"	20.00	31.42	31.42
C37	90°00'00"	20.00	31.42	31.42
C38	90°00'00"	20.00	31.42	31.42
C39	90°00'00"	20.00	31.42	31.42
C40	90°00'00"	20.00	31.42	31.42
C41	90°00'00"	20.00	31.42	31.42
C42	90°00'00"	20.00	31.42	31.42
C43	90°00'00"	20.00	31.42	31.42
C44	90°00'00"	20.00	31.42	31.42
C45	90°00'00"	20.00	31.42	31.42
C46	90°00'00"	20.00	31.42	31.42
C47	90°00'00"	20.00	31.42	31.42
C48	90°00'00"	20.00	31.42	31.42
C49	90°00'00"	20.00	31.42	31.42
C50	90°00'00"	20.00	31.42	31.42



"ELKHORN VILLAGE ADDITION"
 AN ADDITION TO THE CITY OF CASPER, WYOMING
 A VACATION AND REPLAT OF ALL OF BETTY LUKER
 PARKWAY CAMPUS NO. 2 AND A PORTION
 OF LOT 1, ELKHORN VALLEY ADDITION NO. 5
 ADDITIONS TO THE CITY OF CASPER, WYOMING
 A SUBDIVISION OF PORTIONS OF LOT 4
 (SW1/4SW1/4) & SET/ASMT/4, SECTION 7 AND
 NE1/4NW1/4, SECTION 18
 TOWNSHIP 33 NORTH, RANGE 78 WEST
 SIXTH PRINCIPAL MERIDIAN
 NATRONA COUNTY, WYOMING
 SHEET 2 OF 2