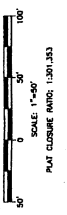
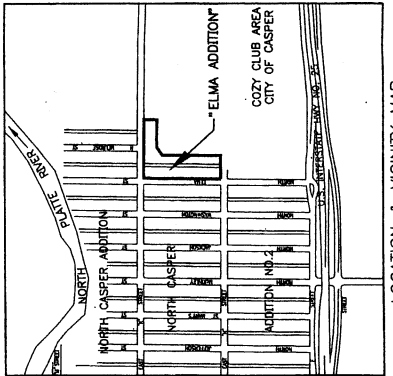
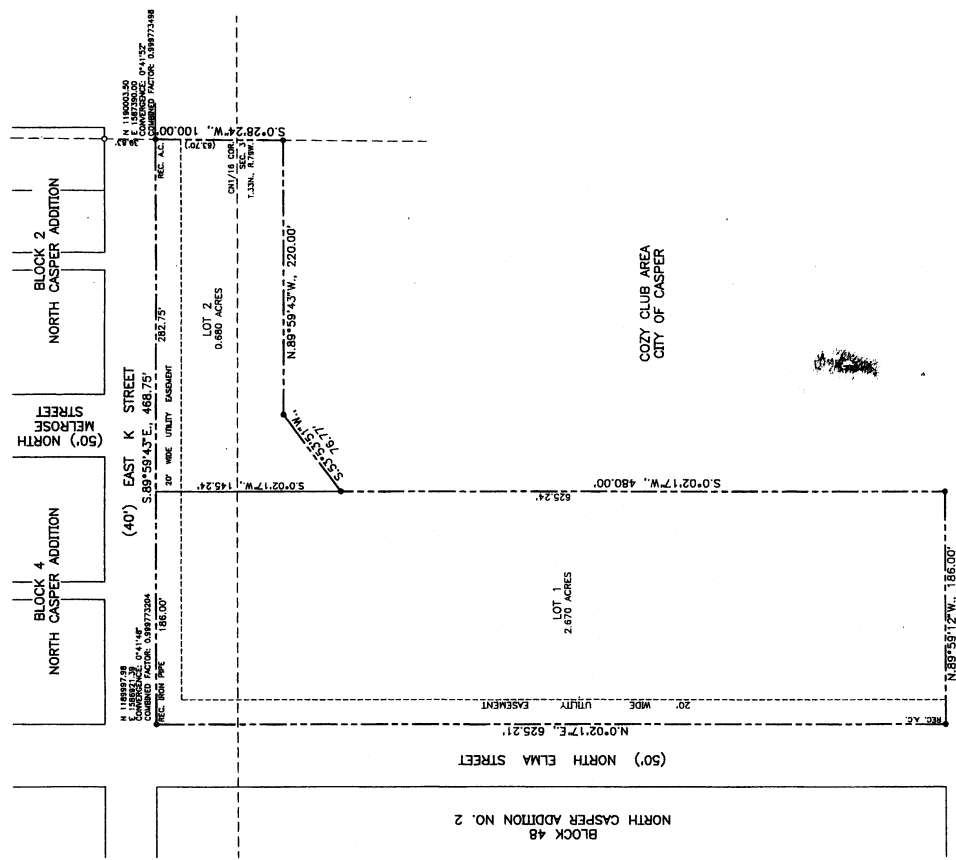


"ELMA ADDITION"
TO THE CITY OF CASPER, WYOMING
A VACATION AND REPLAT OF LOTS 1 THROUGH 14,
AND PORTIONS OF VACATED LOTS 15 THROUGH 28, BLOCK 49
NORTH CASPER ADDITION NO. 2
AN ADDITION TO THE CITY OF CASPER, WYOMING
AND A SUBDIVISION OF PORTIONS OF
THE NE1/4NW1/4 AND SE1/4NW1/4, SECTION 3
TOWNSHIP 33 NORTH, RANGE 79 WEST
SIXTH PRINCIPAL MERIDIAN
NATRONA COUNTY, WYOMING
SCALE: 1"=50'



DATUM:
GROUND DISTANCE - U.S. FOOT
COORDINATES REFER TO CITY OF CASPER US DATUM,
WYOMING STATE PLANE COORDINATES, EAST CENTRAL
ZONE, NAD83/86 AND ELEVATIONS REFER TO NAVD83.

LEGEND
 RECOVERED CORNER (AS NOTED)
 RECOVERED BRASS CAP
 SET BRASS CAP
 BOUNDARY
 EASEMENT
 N 64°32'30"E, 468.86' MEASURED BEARING & DISTANCE
 (N 64°32'30"E 520.35') RECORD BEARING & DISTANCE



CERTIFICATE OF DEDICATION

THE CITY OF CASPER, WYOMING, hereby certifies that they are the owners and proprietors of the following described land, to-wit: 15 lots and portions of lots in Block 48, North Casper Addition No. 2, to the City of Casper, Wyoming, and a subdivision of portions of the NE1/4NW1/4 and SE1/4NW1/4, Section 3, Township 33 North, Range 79 West of the Sixth Principal Meridian, Natrona County, Wyoming and being more particularly described by metes and bounds as follows:

Beginning at the northeasterly corner of the parcel being described and also the northwestern corner of the southerly line of East K Street with the easterly line of North Elma Street, thence from said Point of Beginning and S 0°02'17"W, 145.24' to a point of intersection with the easterly line of said NE1/4NW1/4, Section 3; thence along the easterly line of said Parcel and NE1/4NW1/4 and SE1/4NW1/4, Section 3; S 0°28'24"W, 100.00' feet to a point of intersection with the easterly line of East K Street; N 89°59'43"W, 220.00' feet to a point of intersection with the easterly line of said Parcel and parallel to the easterly line of said Parcel in and intersection with the northerly line of East H Street; N 89°59'12"W, 186.00' feet to the point of intersection with the northerly line of East H Street; S 0°02'17"W, 480.00' feet to the northwestern corner of the southerly line of said Parcel and the easterly line of said North Elma Street; N 0°02'17"E, 625.21' feet to the Point of Beginning and containing 3.350 acres, more or less.

The subdivision of the foregoing described lands is with the consent and in accordance with the provisions of the laws of the State of Wyoming and the laws of the City of Casper, Wyoming. All streets as shown hereon have been previously dedicated to the use, the public and maintenance of utility lines, conduits and ditches as hereinbefore shown and intended for the proper development of said subdivision.

CITY OF CASPER
 307 N. N. STREET
 CASPER, WYOMING 82501

ATTEST: *Paul C. Botelho*
 Mayor, City of Casper

CERTIFICATE OF SURVEYOR

STATE OF WYOMING)
 COUNTY OF NATRONA) ss

I, Steve M. Castle, of Casper, Wyoming hereby state that this plat was prepared from notes taken during actual surveys made by me or others under my direct supervision during the month of March, 2008, and that the same are true and correct to the best of my knowledge and belief. All dimensions are expressed in feet and decimals thereof and courses referred to the true meridian, all being true and correct to the best of my knowledge and belief.

WYOMING REGISTRATION NO. 6010 L.S.

day of March, 2008.

My commission expires March 14th, 2008.

Steve M. Castle
 Surveyor Public

APPROVALS

APPROVED: Planning & Zoning Commission of Casper, Wyoming this 23rd day of March, 2008 and forwarded to the City Council of Casper, Wyoming for their consideration and final approval.

Paul C. Botelho
 Secretary

APPROVED: City Council of Casper, Wyoming by Ordinance No. 03-15 duly passed, adopted and approved on the 15th day of April, 2008.

Attest: *Paul C. Botelho*
 City Clerk

INSPECTED AND APPROVED on the 16th day of April, 2008.
John H. Anderson
 City Engineer

INSPECTED AND APPROVED on the 17th day of April, 2008.
James J. Hanson
 Deputy Surveyor

Filed for Record in the Office of the County Clerk of Natrona County, Wyoming this 15 day of April, 2008.

Renee Vitt
 County Clerk

January 6, 2011

