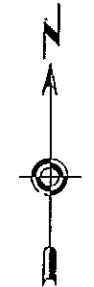
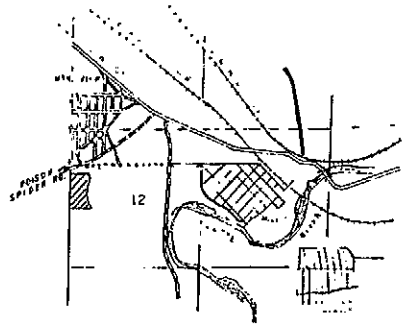
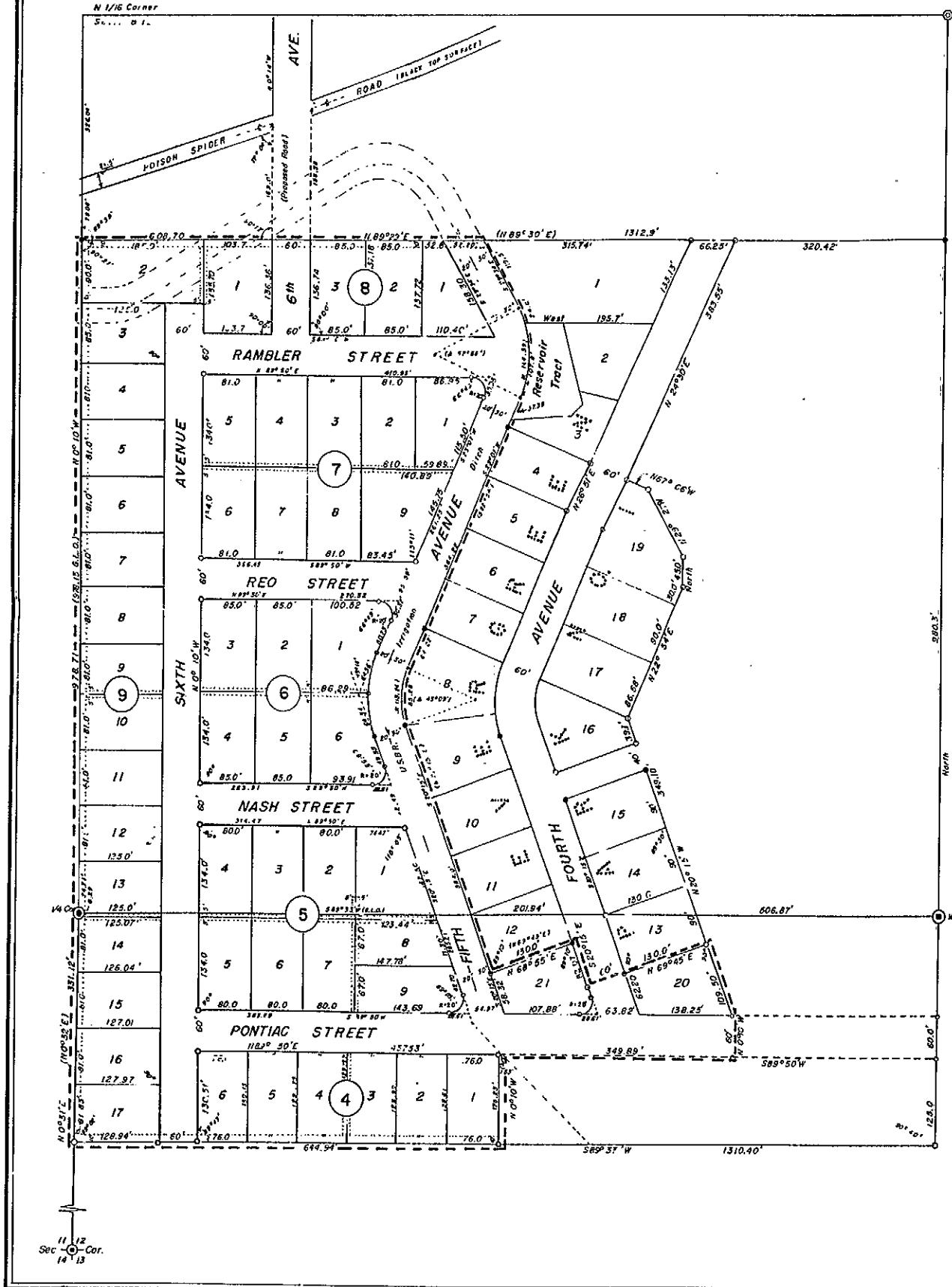


177/600

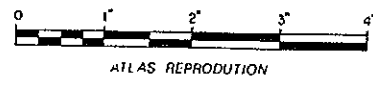
170

K-116

Pocket 4
Folder 5
177



- LEGEND:
- ⊙ Brass Cap monuments - General Land Office.
 - Location of monuments from previous surveys found in place as shown.
 - Pipe monuments established during this survey.
 - () Record distance or bearing.
 - Subdivision boundary.
 - Scale as noted.
 - Utility Easement



MAP OF
EVERGREEN PARK NO. 2 SUBDIVISION
A SUBDIVISION OF PORTIONS OF THE
SW 1/4 NW 1/4 & NW 1/4 NW 1/4 SECTION 12
T. 33 N. R. 80 W., 6th P.M.
NATRONA COUNTY, WYOMING
SCALE: 1" = 100'

CERTIFICATE OF DEDICATION 177 Deeds

STATE OF WYOMING
County of Natrona

I, Archie A. Tillman, a single man, do hereby certify:
That the foregoing subdivision of the certain portion of the S 1/2 SW 1/4 NW 1/4, SW 1/4 NW 1/4 & NW 1/4 NW 1/4 of Section 12, Township 33 North, Range 80 West of the 6th Principal Meridian, Natrona County, Wyoming, as appears on this plat is with my free consent and in accordance with my desire, the undersigned owner and proprietor of said lands; that the name of said subdivision shall be EVERGREEN PARK No. 2, a Subdivision, Natrona County, Wyoming; and that the streets shown on this plat are hereby dedicated to public use.

The undersigned owner of said lands hereby waives and relinquishes all rights he may have under and by virtue of the homestead exemption laws of the State of Wyoming.

Dated at Casper, Wyoming 20th day of May, 1959

Archie A. Tillman
Archie A. Tillman

STATE OF WYOMING
County of Natrona

On this 20th day of May, 1959 before me, Archie A. Tillman, a single man, do hereby certify that the person who executed the foregoing instrument and acknowledged that he executed the same as his free act and deed including the release in waiver of the right of homestead.

Given under my hand and notarial seal this 20th day of May, 1959

My commission expires June 15, 1959
Marianne Spencer
Notary Public

SURVEYOR'S CERTIFICATE

STATE OF WYOMING
County of Natrona

This is to certify that this subdivision designated EVERGREEN PARK NO. 2 SUBDIVISION, comprising parts of the SW 1/4 NW 1/4 & NW 1/4 NW 1/4 of Section 12, Township 33 North, Range 80 West of the 6th Principal Meridian, Natrona County, Wyoming; that this survey was made by me during April, 1959 at the request of Archie A. Tillman; that this plat shows the subdivision thereof into blocks and lots as numbered and shown; that lot corners are marked by iron pipes; that all bearings, angles and distances as shown on the plat are true to the best of my knowledge and belief.

Wyoming Registration No. 144

Edwin H. Johnston
Surveyor

Subscribed in my presence and sworn to before me this 20th day of May, 1959

My Commission Expires June 15, 1959
Marianne Spencer
Notary Public

APPROVED:

Council of Town of Mills, Wyoming by
Ordinance No. _____, City passed, adopted and approved on the _____ day of _____, 1959.

George J. Sudd
Town Clerk

Dated: May 20, 1959

APPROVED:

Board of County Commissioners of Natrona County, Wyoming by Resolution duly passed on the _____ day of _____, 1959.

Chairman of the Board
County Clerk

Dated: Sept. 10, 1959

Inspected and approved: _____
County Surveyor
Aug. 13, 1959

K-116