

144/224

797405

STATE OF WYOMING }
 County of Natrona }
 This instrument was filed for record
 at 2:52 o'clock P.M., on the day
 of NOV. 14 1956
 A.D. and duly recorded
 in Book 164 of Records on Page 224
 Carl J. Thomason
 County Clerk and Ex-Officio Register of Deeds

224

CERTIFICATE OF DEDICATION

I, Archie A. Tillman, a single man, do hereby certify:

That the foregoing subdivision of that certain portion of the S 1/2 SW 1/4 NW 1/4, S 1/2 N 1/2 SW 1/4 NW 1/4, N 1/2 N 1/2 NW 1/4 SW 1/4 of Section 12, Township 33 North, Range 80 West of the 6th Principal Meridian, Natrona County, Wyoming, as appears on this plat is with my free consent and in accordance with my desires, the undersigned owner and proprietor of said lands; that the name of said subdivision shall be EVERGREEN PARK, a Subdivision, Natrona County, Wyoming; and that the streets shown on this plat are hereby dedicated to public use.

The undersigned owner and proprietor of said lands hereby waives and relinquishes all rights he may have under and by virtue of the homestead exemption laws of the State of Wyoming.

Dated at Casper, Wyoming, this 23rd day of November, 1956.

THE STATE OF WYOMING
 COUNTY OF NATRONA

On this 26th day of November, 1956 before me appeared Archie A. Tillman, a single man, to me known to be the person described in and who executed the foregoing instrument and acknowledged that he executed the same as free and correct and including the release and waiver of the right of homestead.

Given under my hand and notarial seal the day and year in this certificate first above written.

My Commission Expires: April 12, 1957
 Notary Public

CERTIFICATE OF SURVEYORS

THE STATE OF WYOMING
 COUNTY OF NATRONA

We, H.L. Worthington and E.C. Lenhart, aka WORTHINGTON & LENHART, hereby certify that on October 15th and 16th, 1956 EVERGREEN PARK, a Subdivision, Natrona County, Wyoming, in the S 1/2 SW 1/4 NW 1/4, S 1/2 N 1/2 SW 1/4 NW 1/4, N 1/2 N 1/2 NW 1/4 SW 1/4 of Section 12, Township 33 North, Range 80 West of the 6th Principal Meridian, Natrona County, Wyoming, was surveyed by us as shown on this plat. Each lot bears its respective number. Said plat is true and correct and we accurately surveyed the subdivision of lots and streets; all are well and accurately staked off and marked. Dimensions are given in feet and decimals thereof.

E.C. Lenhart
 E.C. LENHART, WYO. REG. NO. 75
H.L. Worthington
 H.L. WORTHINGTON, WYO. REG. NO. 142

Subscribed in my presence and sworn to before me this 25th day of October, 1956

My Commission Expires: February 9, 1959
 Notary Public

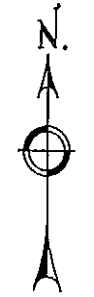
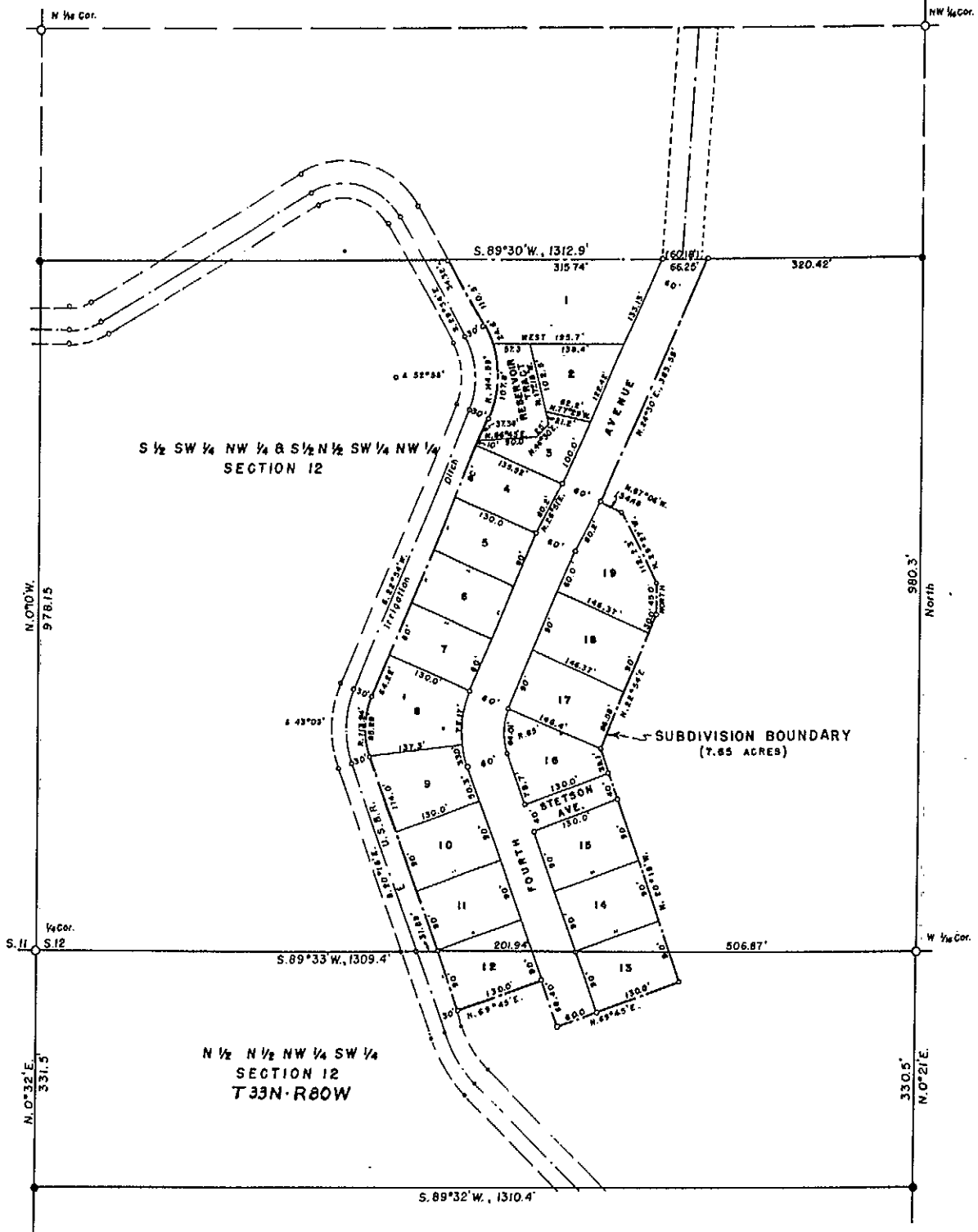
APPROVED:
 Council of Town of Mills, Wyoming by Ordinance No. 100, duly passed, adopted and approved on the 2nd day of December, 1956.
Floyd M. Deane
 Mayor

Attest: *Mark Lee*
 Town Clerk
 Dated: December 2, 1956.

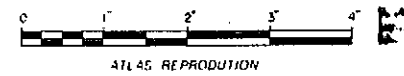
APPROVED:
 Board of County Commissioners of Natrona County, Wyoming, by Resolution duly passed on the 10th day of November, 1956.
James H. Smith
 Chairman of the Board

Attest: *Carl J. Thomason*
 County Clerk
 Dated: November 14, 1956.

Inspected and Approved *Albert M. Smith*
 County Surveyor



SUBDIVISION PLAN
 SCALE: 1" = 100'



PLAT OF
EVERGREEN PARK
 A SUBDIVISION OF PORTIONS OF THE
 SW 1/4 NW 1/4 & NW 1/4 SW 1/4
 SECTION 12
 T.33N., R.80W. 6TH P.M.
 NATRONA COUNTY, WYOMING