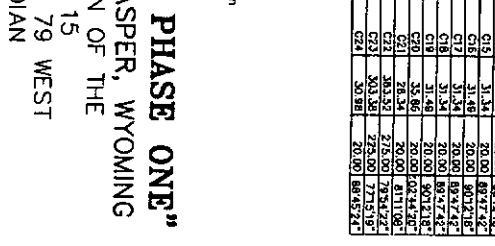
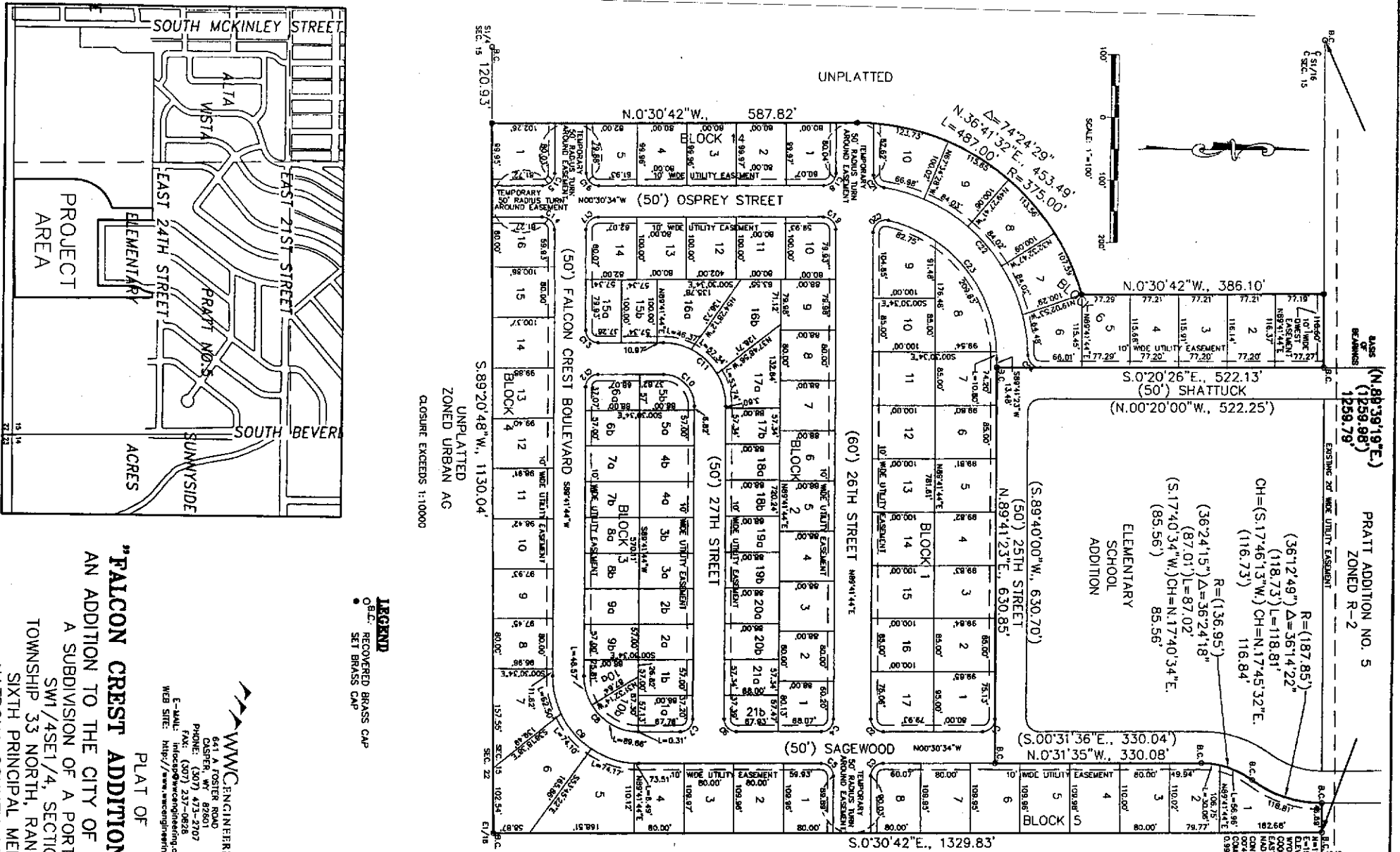


Restrictions indicating a preference, limitation or discrimination based on race, color, religion, sex, handicap, familial status, or national origin are hereby deleted to the extent such restrictions violate 42 USC 3604(c).



Compliments of:
FIRST AMERICAN TITLE INSURANCE CO., INC.
 120 N. Center Street • Casper, WY 82601 • (307) 237-8486

FALCON CREST ADDITION PHASE ONE
 #742760 Rec. 05-21-04



LEGEND
 G.C. RECOVERED BRASS CAP
 SET BRASS CAP

CURVE TABLE

CURVE NO.	CHORD BEARING	CHORD DISTANCE	RADIUS	ANGLE	DELTA
C1	N.0°30'42"W.	587.82'	587.82'	90°00'00"	90°00'00"
C2	N.36°41'32"E.	453.49'	453.49'	90°00'00"	90°00'00"
C3	S.0°20'26"E.	522.13'	522.13'	90°00'00"	90°00'00"
C4	N.0°20'00"W.	522.25'	522.25'	90°00'00"	90°00'00"
C5	S.89°40'00"W.	630.70'	630.70'	90°00'00"	90°00'00"
C6	N.89°41'23"E.	630.85'	630.85'	90°00'00"	90°00'00"
C7	S.0°31'36"E.	330.04'	330.04'	90°00'00"	90°00'00"
C8	N.0°31'35"W.	330.08'	330.08'	90°00'00"	90°00'00"
C9	S.0°30'42"E.	1329.83'	1329.83'	90°00'00"	90°00'00"
C10	S.0°29'E.	1318.60'	1318.60'	90°00'00"	90°00'00"

"FALCON CREST ADDITION, PHASE ONE"
 AN ADDITION TO THE CITY OF CASPER, WYOMING
 A SUBDIVISION OF A PORTION OF THE
 SW1/4SE1/4, SECTION 15
 TOWNSHIP 33 NORTH, RANGE 79 WEST
 SIXTH PRINCIPAL MERIDIAN
 NATRONA COUNTY, WYOMING
 MAY, 2004

WWC ENGINEERING
 641 A FOSTER ROAD
 CASPER, WY 82601
 PHONE: (307) 473-2707
 FAX: (307) 237-0828
 E-MAIL: www@wwcengineering.com
 WEB SITE: <http://www.wwcengineering.com>

CERTIFICATE OF DEDICATION
 THE UNDERSIGNED FALCON CREST DEVELOPMENT, LLC, DOES HEREBY CERTIFY THAT THEY ARE THE OWNER AND PROPRIETOR OF THE FOLLOWING DESCRIBED PARCEL OF LAND, A PARCEL OF LAND SITUATE IN THE SW1/4 OF THE SE1/4 OF SECTION 15, T.33N., R.79W., SIXTH PRINCIPAL MERIDIAN, NATRONA COUNTY, WYOMING AND BEING MORE PARTICULARLY DESCRIBED AS FOLLOWS:
 COMMENCING AT THE NORTHEAST CORNER OF SAID SW1/4SE1/4 ALSO BEING THE NORTHEAST CORNER OF THE PARCEL BEING DESCRIBED AND BEING THE POINT OF BEGINNING, MONUMENTED WITH A BRASS CAP;
 THENCE S89°20'48"W. ALONG THE EAST LINE OF THE SAID SW1/4SE1/4 A DISTANCE OF 1329.83 FEET TO THE SOUTHEAST CORNER OF THE SAID SW1/4SE1/4;
 THENCE N0°30'42"W. A DISTANCE OF 587.82 FEET TO THE POINT OF A CIRCULAR CURVE TO THE RIGHT HAVING A RADIUS OF 587.82 FEET;
 THENCE ALONG SAID CURVE THROUGH A CENTRAL ANGLE OF 74°24'29" A DISTANCE OF 453.49 FEET TO THE CHORD OF WHICH BEARS N17°40'34"E. A DISTANCE OF 453.49 FEET;
 THENCE N.0°20'26"E. A DISTANCE OF 522.13 FEET TO THE NORTHWEST CORNER OF THE ELEMENTARY SCHOOL ADDITION;
 THENCE N.89°41'23"E. ALONG THE WEST LINE OF SAID ELEMENTARY SCHOOL ADDITION A DISTANCE OF 630.85 FEET TO THE SOUTHWEST CORNER OF SAID ELEMENTARY SCHOOL ADDITION;
 THENCE S.0°20'26"E. ALONG THE SOUTH LINE OF SAID ELEMENTARY SCHOOL ADDITION A DISTANCE OF 522.13 FEET TO THE SOUTHWEST CORNER OF SAID ELEMENTARY SCHOOL ADDITION;
 THENCE N.89°41'23"E. ALONG THE WEST LINE OF SAID ELEMENTARY SCHOOL ADDITION A DISTANCE OF 630.85 FEET TO THE SOUTHWEST CORNER OF SAID ELEMENTARY SCHOOL ADDITION;
 THENCE N.0°20'00"W. ALONG THE EAST LINE OF SAID ELEMENTARY SCHOOL ADDITION A DISTANCE OF 522.25 FEET TO THE POINT OF A CIRCULAR CURVE TO THE RIGHT HAVING A RADIUS OF 522.25 FEET;
 THENCE ALONG SAID CURVE THROUGH A CENTRAL ANGLE OF 36°14'22" A DISTANCE OF 361.422 FEET TO THE CHORD OF WHICH BEARS N17°40'34"E. A DISTANCE OF 361.422 FEET TO THE POINT OF BEGINNING.

APPROVALS
 APPROVED BY THE CITY OF CASPER PLANNING AND ZONING COMMISSION OF CASPER, WYOMING THIS 27th DAY OF January 2004.
 ATTEST: *[Signature]* SECRETARY
 APPROVED BY THE CITY COUNCIL OF CASPER, WYOMING BY ORDINANCE NO. 10-04 DULY PASSED, ADOPTED AND APPROVED THIS 24th DAY OF April 2004.
 ATTEST: *[Signature]* CITY CLERK
 INSPECTED AND APPROVED THIS 20th DAY OF May, 2004.
 INSPECTED AND APPROVED THIS 20th DAY OF May, 2004.

RECORDED
 FILED FOR RECORD IN THE OFFICE OF THE COUNTY CLERK OF NATRONA COUNTY, WYOMING THIS 21st DAY OF May 2004.
 INSTRUMENT NO. 742760
 COUNTY CLERK: *[Signature]*
 COUNTY CLERK: *[Signature]*
 COUNTY CLERK: *[Signature]*

CERTIFICATE OF SURVEYOR
 STATE OF WYOMING }
 COUNTY OF NATRONA } SS
 I, MAX D. CARRENTER, A REGISTERED PROFESSIONAL LAND SURVEYOR, LICENSE NO. 2886, DO HEREBY CERTIFY THAT THIS PLAT WAS MADE FROM NOTES TAKEN DURING AN ACTUAL SURVEY MADE UNDER MY DIRECT SUPERVISION IN MAY 2004, AND THAT THIS PLAT CORRECTLY AND ACCURATELY REPRESENTS SAID SURVEY. ALL DIMENSIONS ARE EXPRESSED IN FEET AND DECIMALS THEREOF AND COURSES REFERRED TO THE TRUE MERIDIAN, ALL BEING TRUE AND CORRECT TO THE BEST OF MY KNOWLEDGE AND BELIEF.

THE FOREGOING INSTRUMENT WAS ACKNOWLEDGED BEFORE ME BY MAX D. CARRENTER THIS 10th DAY OF May 2004.
 WITNESS MY HAND AND OFFICIAL SEAL
 MY COMMISSION EXPIRES 11/1/07
 NOTARY PUBLIC: *[Signature]*
 NOTARY PUBLIC: *[Signature]*

WYOMING
 REGISTERED PROFESSIONAL LAND SURVEYOR
 MAX D. CARRENTER
 LICENSE NO. 2886
 EXPIRES 11/1/07
 STATE OF WYOMING
 NATRONA COUNTY
 MAY 21 2004
 COUNTY CLERK
 NATRONA COUNTY, WYOMING

#834

742760