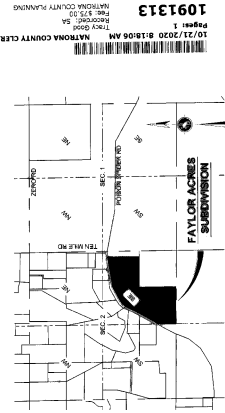


# FAYLOR ACRES SUBDIVISION

LOCATED IN THE SE1/4 SECTION 2, T.33N., R.81W.,  
6TH P.M.,  
NATRONA COUNTY, WYOMING



1091313  
10/27/2020 8:18:08 AM  
NATRONA COUNTY CLERK  
KIMBERLY J. JOHNSON  
NATRONA COUNTY PLANNING  
DEPT 1515  
1000 JOHNSON  
NATRONA, WY 82401

## CERTIFICATE OF DEDICATION

THE UNDERSIGNED, KELLEY & NICHOLSON, DO HEREBY CERTIFY THAT THEY ARE THE OWNERS AND PROPRIETORS OF THE FOLLOWING DESCRIBED PROPERTY, OR AS LONG AS IT IS OWNED BY THEM, AND THAT THE SAME IS LOCATED IN THE SE1/4 SECTION 2, T.33N., R.81W., 6TH P.M., 1/4 OF THE CITY PRINCIPAL MERIDIAN, NATRONA COUNTY, WYOMING, BEING MORE PARTICULARLY DESCRIBED AS FOLLOWS:

COMMENCING AT THE S1/4 CORNER OF SAID SECTION 2, MONUMENTED BY A BRASS CAP AND BEING THE POINT OF BEGINNING. THENCE S60°14'30"W. ALONG THE WESTLINE OF SAID SECTION 2, A DISTANCE OF 508.14 FEET TO AN INTERSECTION WITH THE SOUTH RIGHT-OF-WAY LINE OF COUNTY ROAD NO. 201 (FORDON SPIKER ROAD) MONUMENTED BY AN ALUMINUM CAP. THENCE CONTINUING ON SAID SOUTH RIGHT-OF-WAY LINE N82°33'42"E, A DISTANCE OF 78.54' TO A POINT MONUMENTED BY AN ALUMINUM CAP. THENCE CONTINUING ON SAID SOUTH RIGHT-OF-WAY LINE N82°33'42"E, A DISTANCE OF 102.57' TO A POINT MONUMENTED BY AN ALUMINUM CAP. THENCE CONTINUING ON SAID SOUTH RIGHT-OF-WAY LINE N41°18'07"W, A DISTANCE OF 184.49' TO A POINT MONUMENTED BY AN ALUMINUM CAP. THENCE CONTINUING ON SAID SOUTH RIGHT-OF-WAY LINE N41°18'07"W, A DISTANCE OF 103.37' TO A POINT MONUMENTED BY AN ALUMINUM CAP. THENCE CONTINUING ON SAID SOUTH RIGHT-OF-WAY LINE N41°18'07"W, A DISTANCE OF 89.82' TO A POINT MONUMENTED BY AN ALUMINUM CAP. THENCE CONTINUING ON SAID SOUTH RIGHT-OF-WAY LINE N41°18'07"W, A DISTANCE OF 100.80' TO A POINT MONUMENTED BY AN ALUMINUM CAP. THENCE CONTINUING ON SAID SOUTH RIGHT-OF-WAY LINE N41°18'07"W, A DISTANCE OF 100.80' TO A POINT MONUMENTED BY AN ALUMINUM CAP. THENCE S04°12'31"E, ALONG THE EASTERLY LINE OF THE S1/4 CORNER OF SAID SECTION 2, A DISTANCE OF 130.27' TO THE E1/4 OF SAID SECTION 2, MONUMENTED BY A BRASS CAP. THENCE S04°12'31"E, ALONG THE SOUTHERLY LINE OF THE S1/4 CORNER OF SAID SECTION 2, A DISTANCE OF 137.87' TO THE POINT OF BEGINNING OF SAID PARCEL OF LAND. THENCE N89°50'31"W, ALONG THE SOUTHERLY LINE OF THE S1/4 CORNER OF SAID SECTION 2, A DISTANCE OF 137.87' TO THE POINT OF BEGINNING OF SAID PARCEL OF LAND. THE ABOVE DESCRIBED TRACTS OF LAND CONTAINS 87 ACRES, MORE OR LESS, AND IS SUBJECT TO ANY RIGHTS-OF-WAY AND/OR EASEMENTS, RESERVATIONS AND ENCUMBRANCES WHICH HAVE BEEN LEGALLY ALLOWED.

THE TRACT OF LAND AS IT APPEARS ON THIS PLAN IS DEDICATED WITH THE FINE COMMENT AND IN ACCORDANCE WITH THE DESIRES OF THE ABOVE NAMED OWNERS AND IS HEREBY DEDICATED TO THE USE OF THE PUBLIC AND EASEMENTS AS SHOWN HEREON ARE HEREBY DEDICATED FOR THE USE OF THE PUBLIC AND PRIVATE UTILITY COMPANIES FOR THE PURPOSES OF CONSTRUCTION, OPERATION, AND MAINTENANCE OF UTILITY LINES, CONDUITS, DITCHES, DRAINAGE, AND ACCESS. THE OWNERS HEREBY GRANT BLACK HILLS ENERGY THE NECESSARY RIGHTS AND EASEMENTS FOR THE CONSTRUCTION, OPERATION, AND MAINTENANCE OF THEIR UNDERGROUND AND ABOVE-GROUND LINES AND ALONG THE STRIPS OF LAND DEDICATED TO BLACK HILLS ENERGY EASEMENT, AS SHOWN ON THIS PLAN.

APPROVED BY THE BOARD OF COUNTY COMMISSIONERS OF NATRONA COUNTY, WYOMING, THIS 11th DAY OF October, 2020.

APPROVED BY THE BOARD OF COUNTY COMMISSIONERS OF NATRONA COUNTY, WYOMING, THIS 11th DAY OF October, 2020.

APPROVED BY THE BOARD OF COUNTY COMMISSIONERS OF NATRONA COUNTY, WYOMING, THIS 11th DAY OF October, 2020.

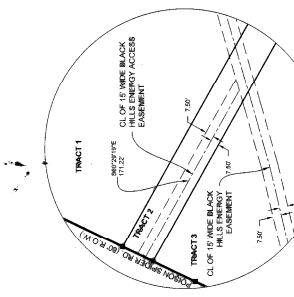
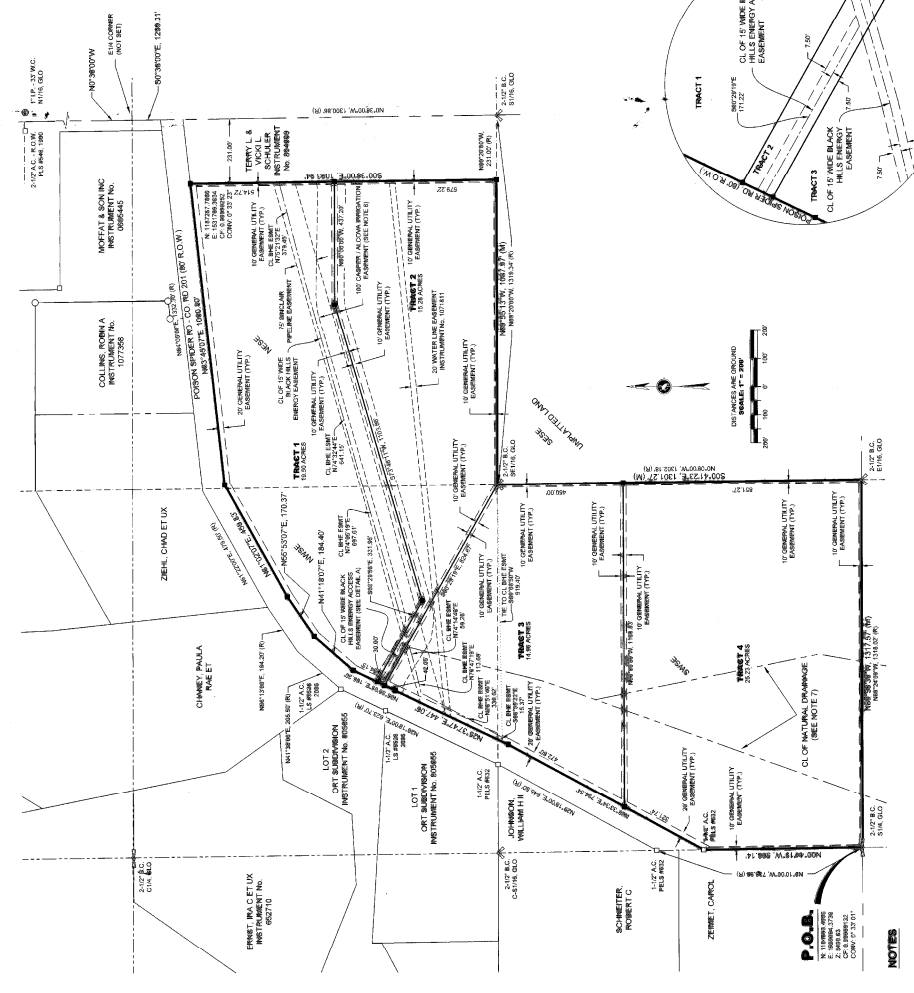
APPROVED BY THE BOARD OF COUNTY COMMISSIONERS OF NATRONA COUNTY, WYOMING, THIS 11th DAY OF October, 2020.

APPROVED BY THE BOARD OF COUNTY COMMISSIONERS OF NATRONA COUNTY, WYOMING, THIS 11th DAY OF October, 2020.

APPROVED BY THE BOARD OF COUNTY COMMISSIONERS OF NATRONA COUNTY, WYOMING, THIS 11th DAY OF October, 2020.

APPROVED BY THE BOARD OF COUNTY COMMISSIONERS OF NATRONA COUNTY, WYOMING, THIS 11th DAY OF October, 2020.

APPROVED BY THE BOARD OF COUNTY COMMISSIONERS OF NATRONA COUNTY, WYOMING, THIS 11th DAY OF October, 2020.



## LEGEND

- RECOVERED ALUMINUM CAP (AS NOTED)
- RECOVERED WITHNESS CORNER
- SET ALUMINUM CAP (US 5029)
- RECOVERED SECTION CORNER
- RECOVERED QUARTER SECTION CORNER
- RECOVERED SIXTEENTH SECTION CORNER
- PROPERTY LINE (PROPOSED)
- PROPOSED EASEMENT LINE
- PROPOSED CL OF BLACK HILLS ENERGY EASEMENTS
- EXISTING EASEMENT LINE
- SECTION LINE
- QUARTER SECTION LINE
- SIXTEENTH SECTION LINE
- MEASURED BEARINGS AND DISTANCE
- RECORD BEARING AND DISTANCE

- ## NOTES
1. ERROR OF CLOSURE EXCEEDS 1:698,710
  2. WATER IS PROVIDED BY THE PIONEER WATER AND SEWER DISTRICT
  3. NO PROPOSED CONTIGUOUS ESTATE DRAPAGE SYSTEMS
  4. BEARINGS AND COORDINATES ARE BASED ON NAD83 (2011) (EPSG:31433) (WYOMING STATE PLANE COORDINATES EAST CENTRAL ZONE, 4902)
  5. ELEVATIONS ARE HATCHED AND NOT TO BE USED AS BENCHMARKS
  6. ELEVATIONS ARE HATCHED AND NOT TO BE USED AS BENCHMARKS
  7. AS NOTED ON THIS PLAN, A NATURAL DRAINAGE IS LOCATED THROUGH TRACTS 3 AND 4. HANGTABLE STRUCTURES SHALL NOT BE CONSTRUCTED WITHIN THE LIMITS OF THE DRAINAGE. IT IS STRONGLY RECOMMENDED THAT REFINEMENTS BE CONSTRUCTED WEST OF THE DRAINAGE.

**OWNER:**  
KELLEY & NICHOLSON  
111 WEST G STREET  
CAMPER, WY 82401

**SURVEYOR:**  
FIELD: JAMES F. JONES, P.L.S.  
REVIEW: JAMES F. JONES, P.L.S.

**DATE DRAWING:**  
07.07.2020

**PROJECT NO. 88998**



MY COMMISSION EXPIRES: March 9, 2024