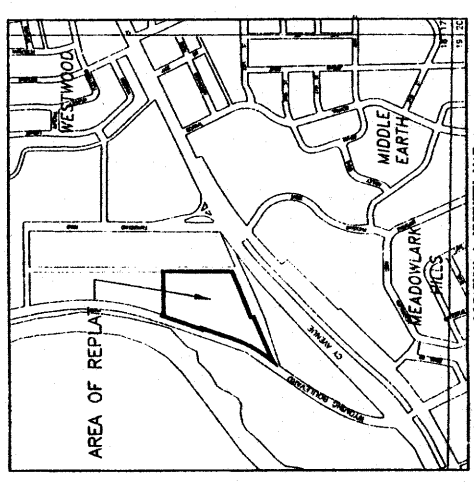
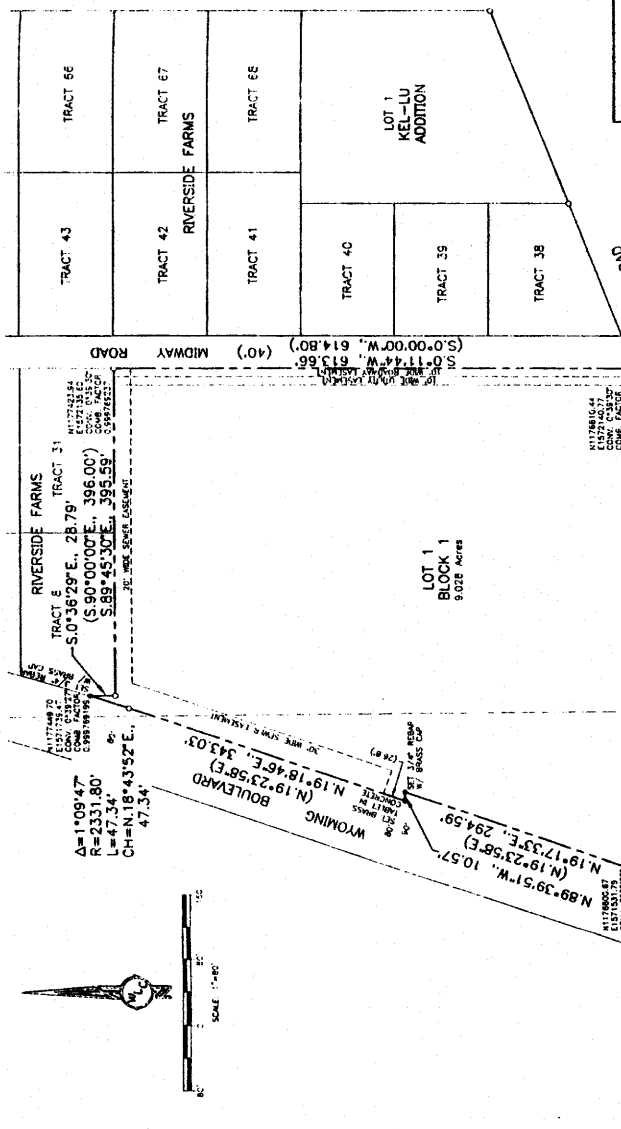


786994
PLAT OF
"FORT CASPAR ACADEMY ADDITION"
TO THE CITY OF CASPER, WYOMING
A VACATION & REPLAT, AMENDMENT AND ANNEXATION OF
LOTS 1 - 3, RIVERSIDE FARMS NO. 2 AND A
PORTION OF TRACT 4 AND TRACTS 5 & 6, RIVERSIDE FARMS
AND A PORTION OF THE NE1/4SW1/4, SECTION 18
TOWNSHIP 33 NORTH, RANGE 79 WEST
SIXTH PRINCIPAL MERIDIAN
NATRONA COUNTY, WYOMING
SCALE: 1"=80'



CERTIFICATE OF SURVEYOR

STATE OF WYOMING, ss
COUNTY OF NATRONA, ss
I, Paul R. Sweeney, Surveyor, hereby certify that this plat was prepared from notes taken during actual surveying by me, or other duly qualified persons, and that the same are well and accurately monumented by brass caps as of the date of this map. All dimensions are expressed in feet and decimals thereof and courses referred to the true meridian, all being true and correct to the best of my knowledge and belief.



Subscribed and sworn to before me by Paul R. Sweeney this 16th day of February, 2006.

My commission expires: 1/1/2007

Fort Caspar Academy Addition
Natural Resources
786994
12/21/2005

CERTIFICATE OF DEDICATION

Ken Daniels, Chairman of the Board of Trustees, Natrona County School District No. 1, hereby certifies that the Board of Trustees, Natrona County School District No. 1, has approved and adopted the plat and map of the subdivision of the above described property and that the same is hereby dedicated to the City of Casper, Wyoming and a portion of Tracts 5 and 6, of Section 18, Township 33 North, Range 79 West, of the Sixth Principal Meridian, Natrona County, Wyoming and being more particularly described by metes and bounds as follows:

Beginning at the northeasterly corner of the Parcel being described and also the non-necessity corner of said Lot 1, Riverside Farms No. 2, an Addition to the City of Casper, Wyoming and also the southeasterly corner of Tract 31, Riverside Farms, a subdivision in Natrona County, Wyoming, and the southeasterly corner of said Lot 1 and 2, Riverside Farms No. 2, an Addition to the City of Casper, Wyoming and a portion of Tracts 5 and 6, of Section 18, Township 33 North, Range 79 West, of the Sixth Principal Meridian, Natrona County, Wyoming and being more particularly described by metes and bounds as follows:

The subdivision of the foregoing described lands as appears on this plat, is with the free consent and in accordance with the desires of the above named owner and proprietor. The name of said subdivision shall be known as FORT CASPAR ACADEMY ADDITION to the City of Casper, Wyoming and a portion of Tracts 5 and 6, of Section 18, Township 33 North, Range 79 West, of the Sixth Principal Meridian, Natrona County, Wyoming and all easements as shown hereon are hereby reserved for purposes of construction, operation and maintenance of utilities, conduits, and ditches as required for the proper development of said subdivision.

NATRONA COUNTY SCHOOL DISTRICT NO. 1
870 N. Cann Road
Casper, Wyoming 82601

Ken Daniels, Chairman of the Board of Trustees

ACKNOWLEDGMENTS

State of Wyoming, ss
County of Natrona, ss
The foregoing instrument was acknowledged before me by Ken Daniels, Chairman of the Board of Trustees this 15th day of February, 2006.

Witness my hand and official seal.
My commission expires: 7-10-08



APPROVALS

APPROVED, Planning & Zoning Commission of Casper, Wyoming this 24th day of February, 2006 and forwarded to the City Council of Casper, Wyoming with recommendation that said plat be approved.

APPROVED, City Council of the City of Casper, Wyoming by Ordinance No. 04-05, duly passed, this 24th day of February, 2006.



INSPECTED AND APPROVED ON the 3rd day of March, 2006.
H. H. Hatcher, City Engineer

INSPECTED AND APPROVED ON the 2nd day of March, 2006.
M. J. ... County Surveyor

Filed for Record in the Office of the County Clerk of Natrona County, Wyoming this 16th day of February, 2006.
My term of office expires January 1, 2007.

LEGEND

- RECORDED BRASS CAP CORNER
- SET 5/8" REBAR W/ALUMINUM CAP
- SET BRASS CAP
- BOUNDARY
- EASEMENTS
- S.89°12.41'W., 665.65' MEASURED DISTANCE
- (S.89°14.01'W., 665.47') RECORD DISTANCE

Plat scale ratio: 1:506179
BASIS OF BEARING: GEODETIC BASED ON GPS

Survey & Plat by
WORTHINGTON, LEHART and CARPENTER, INC.
200 Northparkway
Casper, Wyoming 82601 (307) 266-5529
W.S. No. 1187
Asst. Dir.: FIC/CPAR