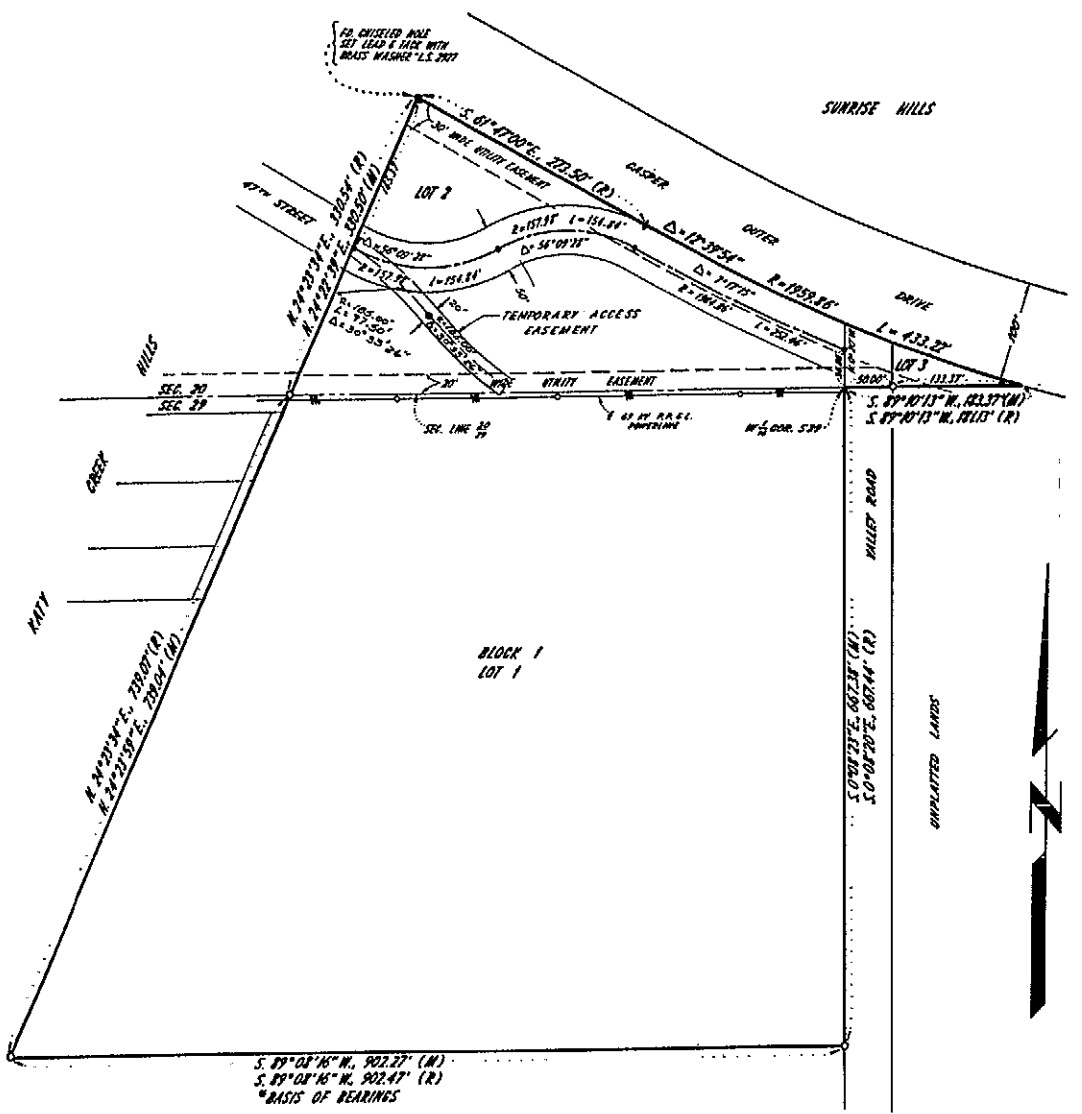


373602

RECORDED JUL 9 1984 AT 2:40 P.M.  
1-RECORDING NO. 373602  
JOHN J. TOLIN COUNTY CLERK

GARDEN CREEK CHURCH ADDITION  
PLAT # 863  
RECORDING # 373602  
Recorded July 9, 1984

PLAT OF  
"GARDEN CREEK CHURCH ADDITION"  
AN ADDITION TO THE CITY OF CASPER  
NATRONA COUNTY WYOMING  
BEING A REPLAT OF PORTIONS OF  
BLOCK 12 SUNRISE HILLS AND DRAGONS' BACK SUBDIVISIONS  
BEING A PORTION OF THE N1/2 NW1/4 OF SECTION 29 AND  
THE S1/2 SW1/4 OF SECTION 20  
TOWNSHIP 33 NORTH, RANGE 79 WEST  
SIXTH PRINCIPAL MERIDIAN, WYOMING  
SCALE: 1"=80'



APPROVED BY THE COMMUNITY PLANNING COMMISSION OF CASPER, WYOMING, THIS 9 DAY OF May, 1984, AND FORWARDED TO THE CITY COUNCIL OF CASPER, WYOMING WITH RECOMMENDATION THAT SAID PLAT BE APPROVED.  
*L. J. ...* SECRETARY  
*...* CHAIRMAN

APPROVED BY THE CITY COUNCIL OF CASPER, WYOMING BY RESOLUTION NO. 84-98, DULY PASSED, ADOPTED, AND APPROVED ON THE 9 DAY OF June, 1984.  
*Joseph H. Corrigan* Mayor  
*Colleen ...* City Clerk

APPROVED BY THE BOARD OF COUNTY COMMISSIONERS OF NATRONA COUNTY, WYOMING BY RESOLUTION DULY PASSED ON THE 14 DAY OF June, 1984.  
*...* Chairman of the Board

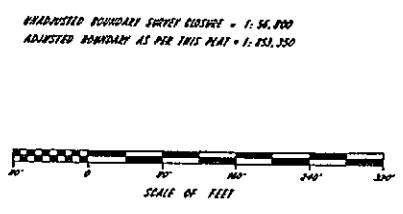
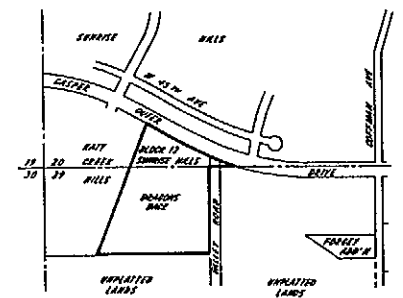
INSPECTED AND APPROVED ON THE 13 DAY OF June, 1984.  
*...* City Engineer

INSPECTED AND APPROVED ON THE 18 DAY OF June, 1984.  
*...* County Surveyor

INSPECTED AND APPROVED ON THE 14 DAY OF June, 1984.  
*...* Natrona County Health Officer

FILED FOR RECORD IN THE OFFICE OF THE COUNTY CLERK OF NATRONA COUNTY, WYOMING.  
DATE July 9, 1984  
*John J. Tolin* County Clerk

CERTIFICATE OF DEDICATION  
THIS IS TO CERTIFY THAT HIGHLAND PARK COMMUNITY CHURCH OF GOD, INC., A CORPORATION DULY ORGANIZED AND EXISTING UNDER VIRTUE OF THE LAWS OF THE STATE OF WYOMING, IS THE OWNER OF A PORTION OF THE LANDS SUBDIVIDED, APPROVED, AND RECORDED AS BLOCK 12 SUNRISE HILLS AND DRAGONS' BACK ADDITIONS TO THE CITY OF CASPER MORE GENERALLY BEING A PORTION OF THE S1/2 SW1/4 OF SECTION 20 AND N1/2 NW1/4 OF SECTION 29, TOWNSHIP 33 NORTH, RANGE 79 WEST OF THE 6TH PRINCIPAL MERIDIAN, NATRONA COUNTY, WYOMING AND THAT THE REPLAT SHOWN HEREON SHALL BE KNOWN AS BLOCK 1 OF THE GARDEN CREEK CHURCH ADDITION TO THE CITY OF CASPER, BEING MORE FULLY DESCRIBED AS FOLLOWS:  
THE POINT OF BEGINNING IS A WITNESS CORNER TO THE WEST 1/16 CORNER OF SECTION 29, SAID WITNESS CORNER BEING A 2 1/2\"/>



LEGEND  
BRASS CAP MONUMENT  
SUBDIVISION BOUNDARY  
EASEMENT LINE  
(R)  
(M)  
RECORD DATA  
MEASURED DATA THIS SURVEY

Survey & Plat by:  
PATRICK ENGINEERING & LAND SURVEYING, INC.  
300 COUNTRY CLUB ROAD, SUITE 305  
CASPER, WYOMING 82401-3009  
307-266-3309  
JULY 11, 1984

- GENERAL NOTES
- 50 FOOT WIDE ROADWAY FOR 47TH STREET IS FOR ACCESS PURPOSES TO THE KATY CREEK HILLS SUBDIVISION.
  - SUNRISE HILLS BLOCK 12 AND DRAGONS' BACK SUBDIVISION HAVE BEEN ZONED P.U.D. THIS PLAT DOES NOT CHANGE THAT ZONING.
  - LOT 1 CONTAINS 12.740 ACRES, LOT 2 CONTAINS 0.415 ACRES, AND LOT 3 CONTAINS 0.065 ACRES.

DATED AT CASPER, WYOMING THIS 18 DAY OF April, 1984.  
Witness: *John H. ...* *Harold D. McSwain*  
CHAIRMAN, BOARD OF TRUSTEES

STATE OF WYOMING )  
COUNTY OF NATRONA )  
THE FOREGOING INSTRUMENT WAS ACKNOWLEDGED BEFORE ME BY HAROLD D. McSWAIN, CHAIRMAN OF THE BOARD OF TRUSTEES FOR HIGHLAND PARK COMMUNITY CHURCH OF GOD, INC., THIS 18 DAY OF April, 1984.  
MY COMMISSION EXPIRES: APRIL 16, 1986

NOTARY PUBLIC: *Teresa Durfee*  
TERESA DURFEE

SURVEYOR'S CERTIFICATE  
STATE OF WYOMING )  
COUNTY OF NATRONA )  
I, PAUL A. REID, HEREBY STATE THAT I AM A REGISTERED LAND SURVEYOR IN THE STATE OF WYOMING UNDER THE PROVISIONS SET FORTH BY WYOMING STATUTES 1957. I FURTHER STATE THAT THIS PLAT IS THE RESULT OF A FIELD SURVEY MADE BY ME DURING THE MONTH OF APRIL 1984, ALSO ON THE BASIS OF MY INFORMATION, KNOWLEDGE, AND BELIEF AS A PROFESSIONAL LAND SURVEYOR, I BELIEVE THIS PLAT CORRECTLY EXHIBITS SAID SURVEY.  
*Paul A. Reid*  
PAUL A. REID, WYO. R.L.S. 2927

SUBSCRIBED IN MY PRESENCE AND SHOWN BEFORE ME THIS 18 DAY OF APRIL 1984.  
MY COMMISSION EXPIRES: APRIL 16, 1986  
NOTARY PUBLIC: *Teresa Durfee*  
TERESA DURFEE