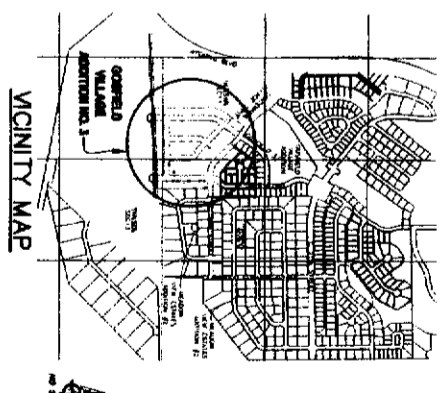
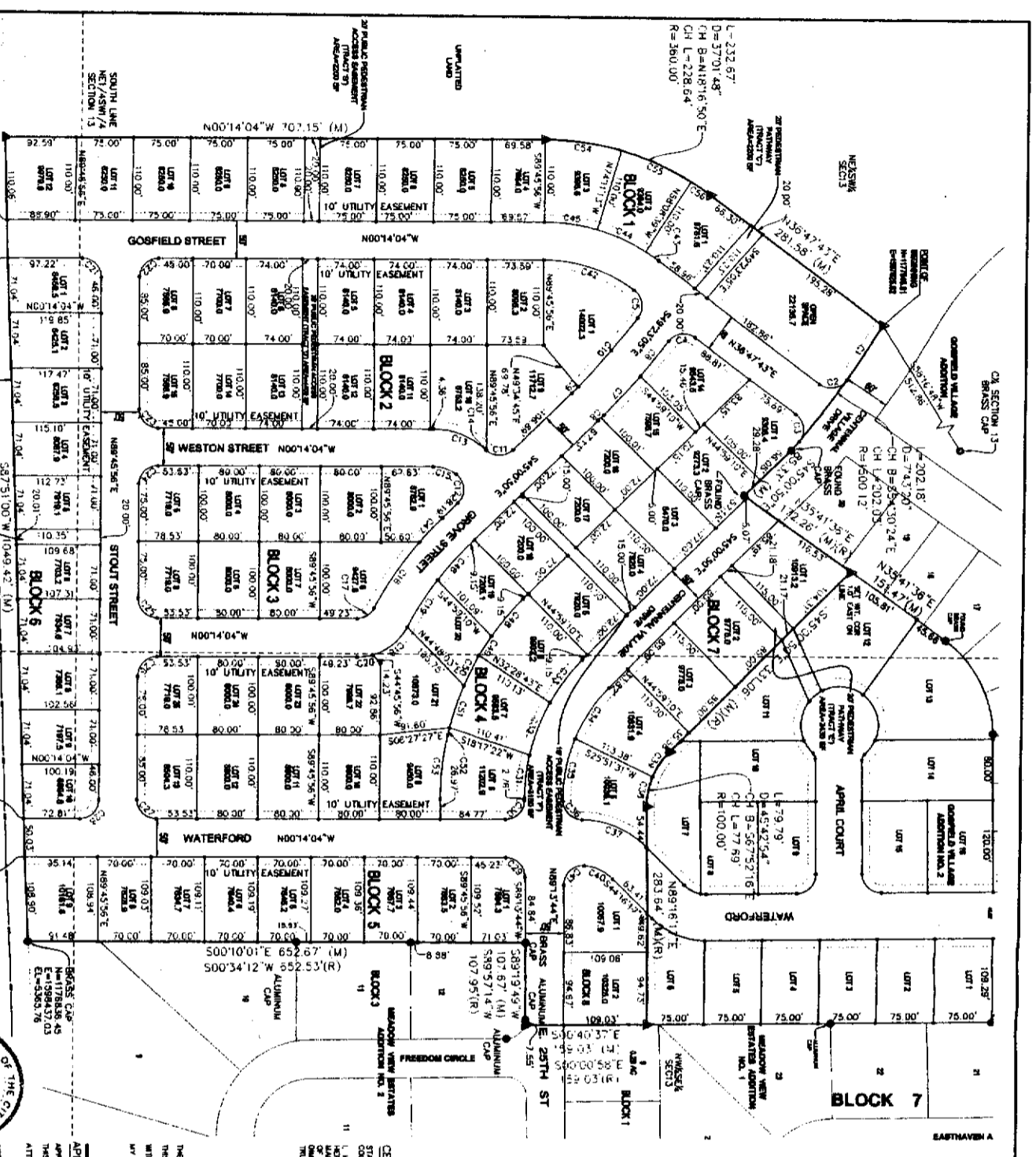


cepi
 Civil Engineering Professionals, Inc.
 4800 Casper Drive, Casper, WY 82409
 Phone 307.264.4344 Fax 307.264.0303
 www.cepi-wy.com



MICINITY MAP



Curve #	Length	Radius	Delta	Ch Bearing	Ch L
C1	44.8	110.0	71.00°	N89°45'36\"/>	



CERTIFICATE OF DEDICATION
 STATE OF WYOMING
 COUNTY OF NATRONA
 The undersigned, 482, LLC, does hereby certify that they are the owners and proprietors of the following described parcels of land situated in the G/25th/A/2nd NW 1/4 of Section 13, T.33N., R.79W., 6th P.M., Natrona County, Wyoming, and that the same are being dedicated to the public use of the City of Casper, Wyoming, as shown on the plat hereunto filed and recorded in the office of the County Clerk of Natrona County, Wyoming this 12th day of August, 2011.

APPROVALS
 APPROVED BY THE CITY OF CASPER PLANNING AND ZONING COMMISSION OF CASPER, WYOMING
 APPROVED BY THE CITY OF CASPER
 APPROVED BY THE CITY OF CASPER
 APPROVED BY THE CITY OF CASPER
 APPROVED BY THE CITY OF CASPER

NOTES
 1. CORNER OF CORNER EXCEEDS 1:50,000
 2. BASIS OF REVISIONS IS THE WYOMING STATE PLANE COORDINATE SYSTEM EAST CENTRAL ZONE, NAD 83, DATUM OF CASPER DATUM.
 3. THE COMPENSATION PAID AT THE POINT OF RECORDING IS \$9,742.00, AND THE COMPENSATION FACTOR IS 0.000722.

GOSFIELD VILLAGE ADDITION NO. 3
 TO THE CITY OF CASPER, WYOMING
 BEING A PORTION OF THE ESKWA AND WISELA
 SECTION 13, T.33N., R.79W., 6TH P.M.,
 NATRONA COUNTY, WYOMING