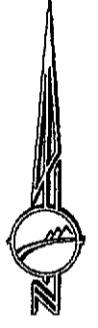
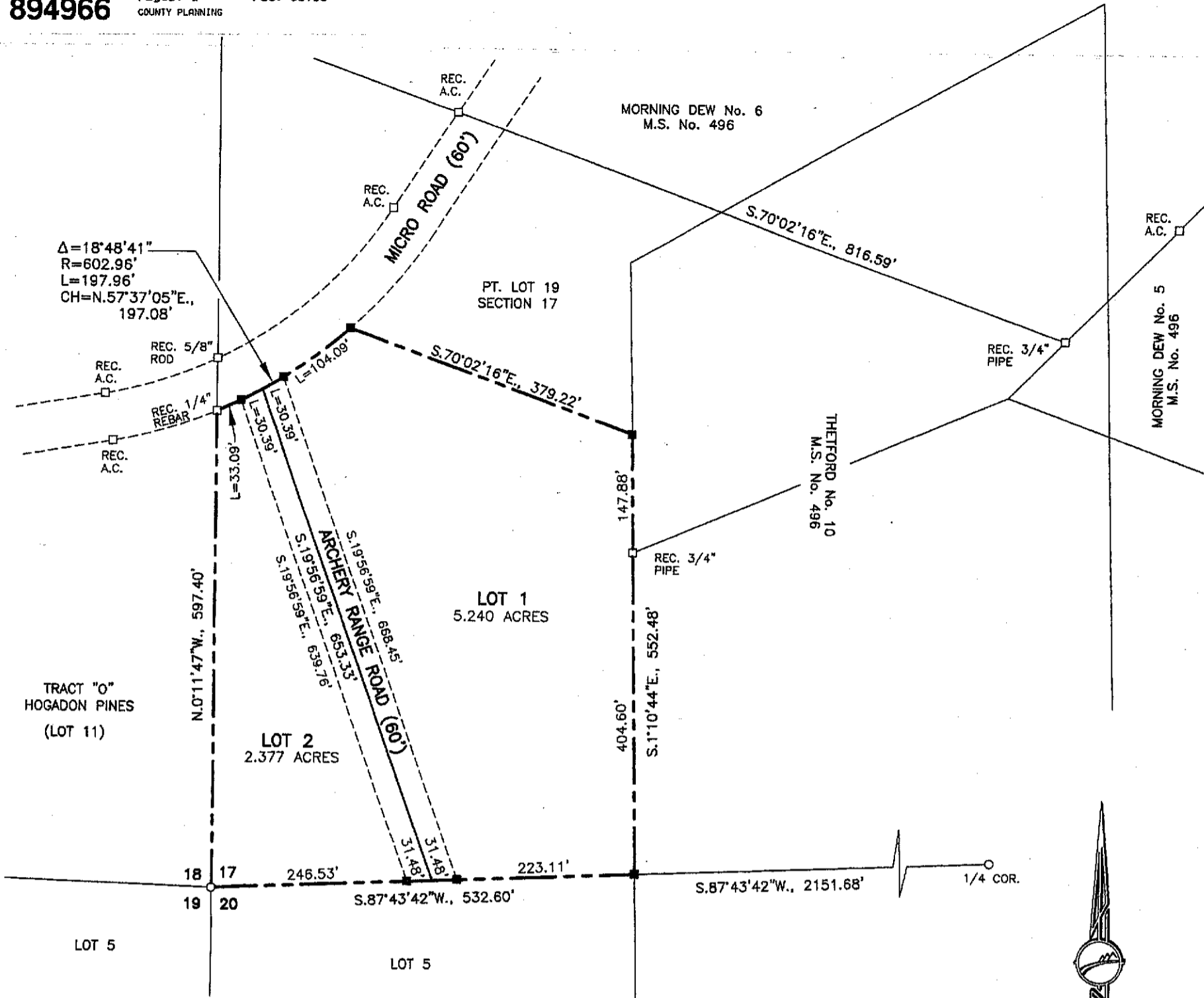


894966

NATRONA COUNTY CLERK, WY
 Renea Vitto Recorded: RV
 Sep 10, 2010 01:49:25 PM
 Pages: 1 Fee: \$0.00
 COUNTY PLANNING



SCALE: 1"=120'
 BASIS OF BEARING:
 GEODETIC BASED ON GPS

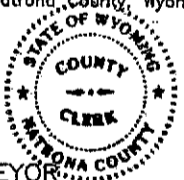
CERTIFICATE OF APPROVAL

STATE OF WYOMING }
 COUNTY OF NATRONA } ss

I, do hereby certify that this record of survey has been examined by me and found to comply with the regulations for Natrona County, Wyoming, and is therefore approved for recording.

[Signature] 9/10 *[Signature]* 9/10
 COUNTY DEVELOPMENT DIRECTOR/DATE COUNTY SURVEYOR/DATE

Filed for record in the office of the county clerk of Natrona County, Wyoming on this 10th day of Sept, 2010.
[Signature]
 COUNTY CLERK



CERTIFICATE OF SURVEYOR

My term of office expires
 January 8, 2011

I, Steve M. Castle, a registered professional land surveyor, License No. 6010, do hereby certify that this plat was made from notes taken during an actual survey made by me or under my direct supervision during the month of August, 2010 and that this plat, to the best of my knowledge and belief, correctly and accurately represents said survey.



CERTIFICATE OF DEDICATION

Richard T. Shamley, ^{MANAGING PARTNER} President, Group 10 hereby certify that the above or foregoing subdivision, Group 10 Simple Subdivision, being a portion of Lot 19, Section 17, Township 32 North, Range 79 West of the Sixth Principal Meridian, Natrona County, Wyoming as it appears on this plat is with the free consent and in accordance with the desires of the above named and undersigned owners and proprietors of said lands, the name of said subdivision shall be "GROUP 10 SIMPLE SUBDIVISION". Archery Range Road as shown hereon is hereby dedicated for the use of the public.
 Dated at Casper, Wyoming this 10th day of September 2010.

[Signature]
 Richard T. Shamley, President, Group 10
 MANAGING PARTNER

STATE OF WYOMING }
 COUNTY OF NATRONA } ss

The foregoing instrument was acknowledged before me by Richard T. Shamley, President, Group 10, on this 10th day of September, 2010.

Witness my hand and official seal.

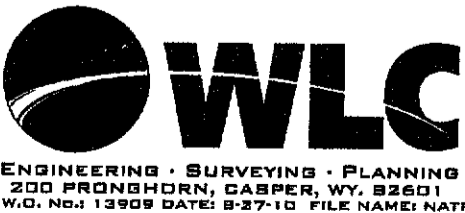
My commission expires: September 21, 2011 *[Signature]*
 Notary Public



LEGEND

- RECOVERED GLO BRASS CAP
- RECOVERED CORNER (AS NOTED)
- SET 5/8" REBAR WITH ALUMINUM CAP
- EASEMENT
- SUBDIVISION BOUNDARY

PLAT OF
GROUP 10 SIMPLE SUBDIVISION
 BEING A PORTION OF LOT 19, SECTION 17,
 TOWNSHIP 32 NORTH, RANGE 79 WEST
 SIXTH PRINCIPAL MERIDIAN
 NATRONA COUNTY, WYOMING



200 PRONGHORN, CASPER, WY. 82601
 W.O. No. 13909 DATE: 8-27-10 FILE NAME: NATRONA COUNTY RD & BR 13909