

259/58

PLAT OF
HANSEN'S SUBDIVISION
A SUBDIVISION IN THE CITY OF CASPER
NATRONA COUNTY, WYOMING
BEING A SUBDIVISION OF A
PORTION OF
THE E 1/2 SE 1/4 SECTION 3 T.33N.R.79W.
6th P.M.

SCALE: 1" = 40'

CERTIFICATE OF DEDICATION

STATE OF WYOMING)
COUNTY OF NATRONA) SS

THIS IS TO CERTIFY THAT THE ADDITION AND SUBDIVISION SET OUT BY THIS PLAT TO BE KNOWN AS "HANSEN'S SUBDIVISION" AND BEING A PORTION OF THE EAST ONE-HALF OF THE SOUTHEAST ONE-QUARTER (EISE1), SECTION 5, TOWNSHIP 33 NORTH, RANGE 7 WEST, SIXTH PRINCIPAL MERIDIAN, NATRONA COUNTY, WYOMING AND BEING MORE PARTICULARLY DESCRIBED BY METES AND BOUNDS AS FOLLOWS:

THE POINT OF BEGINNING IS AT THE SOUTHEASTERLY CORNER OF SAID SUBDIVISION AND LIES S.57°32'W. 90.71 FEET FROM THE NE CORNER OF THE EISE1, OF SAID SECTION 5.

FROM SAID POINT OF BEGINNING, PROCEED S.79°43'W. A DISTANCE OF 268.94 FEET TO A POINT ON THE EASTERLY LINE OF NORTH LENOX STREET EXTENDED AND THE SOUTHWESTERLY CORNER OF SAID SUBDIVISION; THENCE DUE NORTH ALONG SAID EASTERLY LINE OF NORTH LENOX STREET EXTENDED A DISTANCE OF 50.81 FEET TO THE NORTHWESTERLY CORNER OF SAID SUBDIVISION AND THE SOUTHWESTERLY CORNER OF BLOCK 4 OF SAID "EAST BURLINGTON ADDITION" TO THE CITY OF CASPER; THENCE N.79°43'E. ALONG THE SOUTHERLY LINE OF SAID "EAST BURLINGTON ADDITION" A DISTANCE OF 270.47 FEET TO THE SOUTHEASTERLY CORNER OF SAID BLOCK 4; THENCE CONTINUING N.79°43'E. ALONG THE SOUTHERLY LINE 5 OF SAID "EAST BURLINGTON ADDITION" A DISTANCE OF 60.97 FEET TO THE SOUTHWESTERLY CORNER OF SAID "EAST BURLINGTON ADDITION"; THENCE CONTINUING N.79°43'E. ALONG THE SOUTHERLY LINE OF SAID "EAST BURLINGTON ADDITION" A DISTANCE OF 79.33 FEET TO THE NORTHEASTERLY CORNER OF SAID SUBDIVISION; THENCE S. 21°28'W. A DISTANCE OF 58.71 FEET TO THE POINT OF BEGINNING AND CONTAINING 19,985 SQUARE FEET OR 0.459 ACRES, MORE OR LESS.

IS MADE WITH THE FREE CONSENT AND IN ACCORDANCE WITH THE DESIRES OF THE UNDERSIGNED OWNERS AND PROPRIETORS OF SAID LANDS.

ATTEST:
Virginia L. Hansen
VIRGINIA L. HANSEN, SECRETARY

HANSEN ENTERPRISES
Eike C. Hansen
EIKE C. HANSEN, PRESIDENT

STATE OF WYOMING)
COUNTY OF NATRONA) SS

On this 17th day of March, 1975, before me personally appeared EIKE C. HANSEN, to me personally known, who, being by me duly sworn, did say that he is the President of HANSEN ENTERPRISES, and that the foregoing instrument was signed on behalf of said corporation by authority of its Board of Directors and said EIKE C. HANSEN acknowledged said instrument to be the free act and deed of said corporation. Given under my hand and notarial seal this 17th day of March, 1975.

My commission expires: Nov. 23rd, 1977

John P. Spaul
JOHN P. SPAUL
NOTARY PUBLIC

CERTIFICATE OF SURVEYOR

STATE OF WYOMING)
COUNTY OF NATRONA) SS

I, Frank Luers, a Professional Engineer and Land Surveyor, of Casper, Wyoming hereby certify that this plat was prepared from notes taken during actual surveys made by Johnny M. Kinder and Gene Calvert, and for whose work I stand responsible, during the month of March, 1975, and said survey is correctly shown hereon. Said plat is true and correct to the best of my knowledge and belief, all bearings referred to the true meridian and all dimensions are expressed in feet and decimals thereof. The foregoing addition was re-measured as indicated and shown by said plat on this 17th day of March, 1975.

Wyoming Registration no. 487
Professional Engineer and Land Surveyor

Frank Luers
FRANK LUERS

Subscribed in my presence and sworn to before me this 17th day of March, 1975.
My commission expires: Nov. 23rd, 1977

Charles Raymond
CHARLES RAYMOND
NOTARY PUBLIC

60

APPROVALS

APPROVED: Community Planning Commission of Casper, Wyoming, 10th day of April, 1975 and forward to the City Council of Casper, Wyoming with recommendation that said plat be approved

APPROVED: City Council of Casper, Wyoming by Resolution No. 78-18, duly passed, adopted and approved on the 18th day of April, 1975.

APPROVED: Board of County Commissioners of Natrona County, Wyoming by resolution duly passed on the 8 day of April, 1975.

ATTEST: *Colvin J. Chaboy*
CLERK

ATTEST: *John P. Spaul*
NOTARY PUBLIC

PRESENT OF THE COUNCIL:
My Term of Office Expires: January 2, 1976

Inspected and approved on the 18th day of April, 1975

Gary J. Conner
GARY J. CONNER
COUNTY ENGINEER

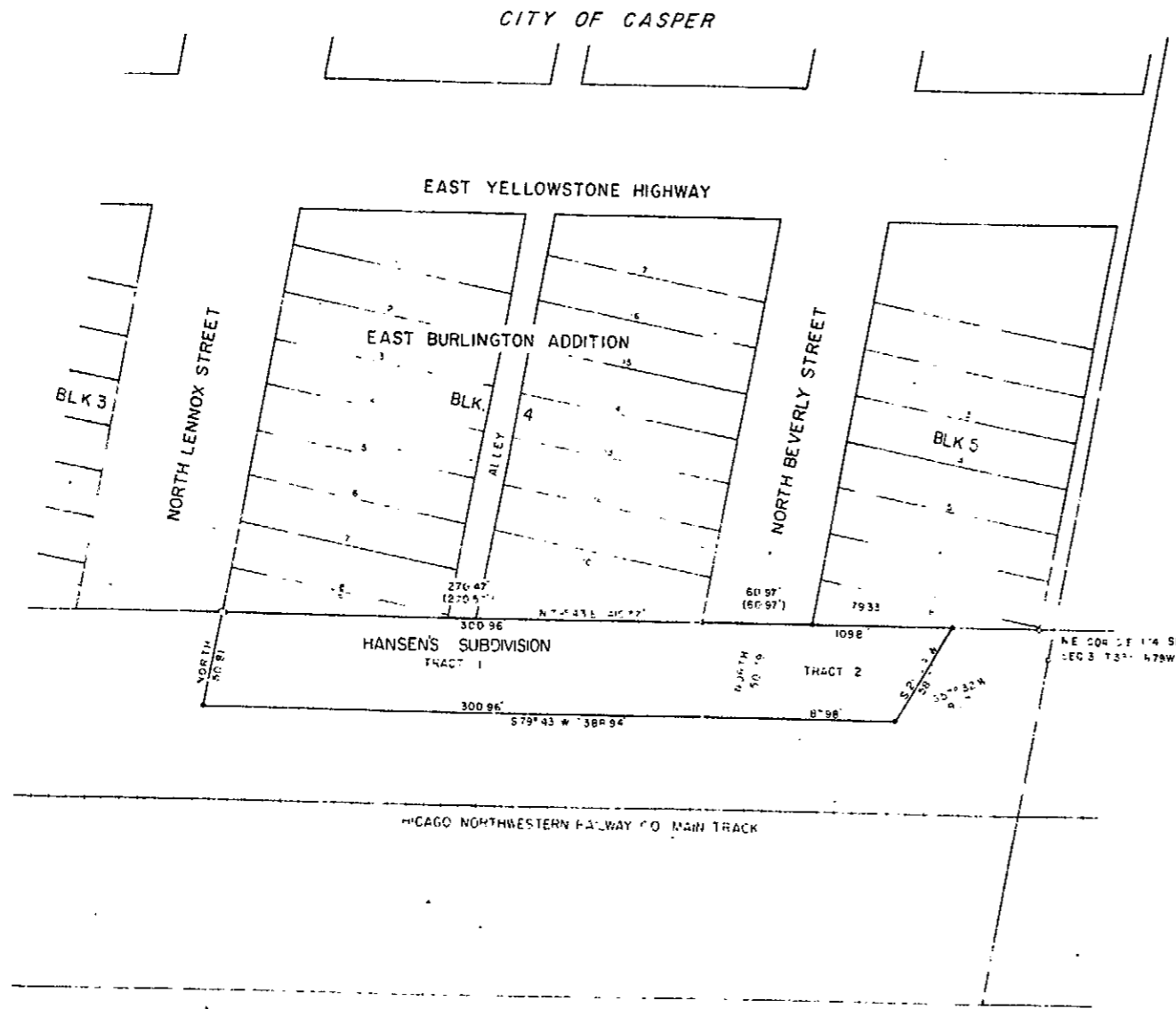
Inspected and approved on the 20th day of April, 1975

H. J. ...
COUNTY SURVEYOR

Inspected and approved on the ___ day of ___, 1975

Filed for record in the Office of the County Clerk of Natrona County, Wyoming
19 May 1975

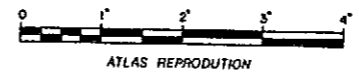
John P. Spaul
NOTARY PUBLIC



DESIGNED BY
NORTHWESTERN ENGINEERS-ARCHITECTS, INC.
2111 EAST SECOND STREET
CASPER, WYOMING

LEGEND

- Survey
- L.A. - A.P.C.
-



ATLAS REPRODUCTION