

CERTIFICATE OF DEDICATION

STATE OF WYOMING)
 COUNTY OF MADISON) SS

THE UNDERSIGNED, JOHN ALAN INVESTMENTS, LLC, HAS HEREBY CERTIFIED THAT THEY ARE THE OWNER AND PROPRIETOR OF A PORTION OF THE SURFACE OF THE CITY OF MADISON AND ALL OF LOTS 9 THROUGH 21, OF GARDEN CREEK HILLS PATIO HOMES NO. 1 ADDITION TO THE CITY OF MADISON, BEING MORE PARTICULARLY DESCRIBED AS FOLLOWS:

COMMENCING AT THE EAST 1/4 CORNER OF SAID SECTION 29, MONUMENTED BY A BRASS CAP;
 THENCE S89°42'27" W, A DISTANCE OF 65.53 FEET TO THE SOUTHWEST CORNER OF THE PARCEL, ALSO BEING THE
 SOUTHWEST CORNER OF SAID SECTION 29, MONUMENTED BY A BRASS CAP AND BEING
 THE POINT OF BEGINNING;

THENCE S65°56'57" W, A DISTANCE OF 132.60 FEET TO A POINT OF CURVATURE, MONUMENTED BY A BRASS CAP,
 DISTANCE OF 132.60 FEET TO A POINT OF CURVATURE, MONUMENTED BY A BRASS CAP, A
 CURVE HAVING A RADIUS OF 674.00 FEET, THROUGH A CENTRAL ANGLE OF 9°50'47", A DISTANCE OF 115.69 FEET, HAVING A
 CHORD BEARING OF S29°07'07" N, A DISTANCE OF 115.26 FEET TO A POINT, MONUMENTED BY A BRASS CAP;

THENCE N23°26'46" W, A DISTANCE OF 101.4 FEET TO A POINT MONUMENTED BY A BRASS CAP;
 THENCE CONTINUING ALONG THE SOUTH LINE OF THE PARCEL, THE WORTH LINE OF GOODENOUGH DRIVE AND A CURVE
 TO THE RIGHT HAVING A RADIUS OF 653.00 FEET, THROUGH A CENTRAL ANGLE OF 1°07'07", A DISTANCE OF 104.54 FEET,
 MONUMENTED BY A BRASS CAP;

THENCE S20°30'17" W, A DISTANCE OF 230.98 FEET TO A POINT OF CURVATURE, MONUMENTED BY A BRASS CAP,
 A DISTANCE OF 230.98 FEET TO A POINT OF CURVATURE, MONUMENTED BY A BRASS CAP,
 HAVING A RADIUS OF 300.00 FEET, THROUGH A CENTRAL ANGLE OF 17°04'47", A DISTANCE OF 63.89 FEET, HAVING A
 CHORD BEARING OF S20°30'17" W, A DISTANCE OF 63.89 FEET TO THE SOUTHWEST CORNER OF THE PARCEL, ALSO BEING THE
 SOUTHWEST CORNER OF THE DAMAGED ADDITION, MONUMENTED BY A BRASS CAP;

THENCE N00°00'00" W, ALONG THE WEST LINE OF GARDEN CREEK HILLS NO. 1, AND THE EAST LINE OF THE DAMAGED ADDITION, A
 DISTANCE OF 30.47 FEET TO THE NORTHWEST CORNER OF THE PARCEL, ALSO BEING THE SOUTHWEST CORNER OF A CITY
 OF LOSER WALKER'S DRIVE TRACT, MONUMENTED BY A BRASS CAP;

THENCE N00°00'00" W, ALONG THE NORTH LINE OF THE PARCEL AND THE SOUTH LINE OF SAID WATER STORAGE TANK
 TRACT, A DISTANCE OF 290.00 FEET TO THE SOUTHWEST CORNER OF SAID TANK TRACT, MONUMENTED BY A BRASS CAP;
 THENCE N00°00'00" W, A DISTANCE OF 64.77 FEET TO THE NORTHWEST CORNER OF THE PARCEL, LOCATED ON THE WEST
 LINE OF SAID TANK TRACT, MONUMENTED BY A BRASS CAP;

THENCE S00°00'00" W, ALONG THE EAST LINE OF THE PARCEL, AND THE WEST LINE OF SAID TANK TRACT TO AND 3' WADOUT
 STREET, A DISTANCE OF 27.00 FEET TO A POINT MONUMENTED BY A BRASS CAP;
 THENCE S00°00'00" W, ALONG THE EAST LINE OF THE PARCEL, AND THE WEST LINE OF SAID TANK TRACT TO AND 3' WADOUT
 STREET, A DISTANCE OF 27.00 FEET TO A POINT MONUMENTED BY A BRASS CAP;

THENCE N45°00'00" W, ALONG THE NORTH LINE OF THE PARCEL, AND THE SOUTH LINE OF SAID TANK TRACT TO AND 3' WADOUT
 STREET, A DISTANCE OF 27.00 FEET TO A POINT MONUMENTED BY A BRASS CAP;
 THENCE N45°00'00" W, ALONG THE NORTH LINE OF THE PARCEL, AND THE SOUTH LINE OF SAID TANK TRACT TO AND 3' WADOUT
 STREET, A DISTANCE OF 27.00 FEET TO A POINT MONUMENTED BY A BRASS CAP;

THENCE N45°00'00" W, ALONG THE NORTH LINE OF THE PARCEL, AND THE SOUTH LINE OF SAID TANK TRACT TO AND 3' WADOUT
 STREET, A DISTANCE OF 27.00 FEET TO A POINT MONUMENTED BY A BRASS CAP;
 THENCE N45°00'00" W, ALONG THE NORTH LINE OF THE PARCEL, AND THE SOUTH LINE OF SAID TANK TRACT TO AND 3' WADOUT
 STREET, A DISTANCE OF 27.00 FEET TO A POINT MONUMENTED BY A BRASS CAP;

THENCE N45°00'00" W, ALONG THE NORTH LINE OF THE PARCEL, AND THE SOUTH LINE OF SAID TANK TRACT TO AND 3' WADOUT
 STREET, A DISTANCE OF 27.00 FEET TO A POINT MONUMENTED BY A BRASS CAP;
 THENCE N45°00'00" W, ALONG THE NORTH LINE OF THE PARCEL, AND THE SOUTH LINE OF SAID TANK TRACT TO AND 3' WADOUT
 STREET, A DISTANCE OF 27.00 FEET TO A POINT MONUMENTED BY A BRASS CAP;

THENCE N45°00'00" W, ALONG THE NORTH LINE OF THE PARCEL, AND THE SOUTH LINE OF SAID TANK TRACT TO AND 3' WADOUT
 STREET, A DISTANCE OF 27.00 FEET TO A POINT MONUMENTED BY A BRASS CAP;
 THENCE N45°00'00" W, ALONG THE NORTH LINE OF THE PARCEL, AND THE SOUTH LINE OF SAID TANK TRACT TO AND 3' WADOUT
 STREET, A DISTANCE OF 27.00 FEET TO A POINT MONUMENTED BY A BRASS CAP;

THENCE N45°00'00" W, ALONG THE NORTH LINE OF THE PARCEL, AND THE SOUTH LINE OF SAID TANK TRACT TO AND 3' WADOUT
 STREET, A DISTANCE OF 27.00 FEET TO A POINT MONUMENTED BY A BRASS CAP;
 THENCE N45°00'00" W, ALONG THE NORTH LINE OF THE PARCEL, AND THE SOUTH LINE OF SAID TANK TRACT TO AND 3' WADOUT
 STREET, A DISTANCE OF 27.00 FEET TO A POINT MONUMENTED BY A BRASS CAP;

THENCE N45°00'00" W, ALONG THE NORTH LINE OF THE PARCEL, AND THE SOUTH LINE OF SAID TANK TRACT TO AND 3' WADOUT
 STREET, A DISTANCE OF 27.00 FEET TO A POINT MONUMENTED BY A BRASS CAP;
 THENCE N45°00'00" W, ALONG THE NORTH LINE OF THE PARCEL, AND THE SOUTH LINE OF SAID TANK TRACT TO AND 3' WADOUT
 STREET, A DISTANCE OF 27.00 FEET TO A POINT MONUMENTED BY A BRASS CAP;

THENCE N45°00'00" W, ALONG THE NORTH LINE OF THE PARCEL, AND THE SOUTH LINE OF SAID TANK TRACT TO AND 3' WADOUT
 STREET, A DISTANCE OF 27.00 FEET TO A POINT MONUMENTED BY A BRASS CAP;
 THENCE N45°00'00" W, ALONG THE NORTH LINE OF THE PARCEL, AND THE SOUTH LINE OF SAID TANK TRACT TO AND 3' WADOUT
 STREET, A DISTANCE OF 27.00 FEET TO A POINT MONUMENTED BY A BRASS CAP;

THENCE N45°00'00" W, ALONG THE NORTH LINE OF THE PARCEL, AND THE SOUTH LINE OF SAID TANK TRACT TO AND 3' WADOUT
 STREET, A DISTANCE OF 27.00 FEET TO A POINT MONUMENTED BY A BRASS CAP;
 THENCE N45°00'00" W, ALONG THE NORTH LINE OF THE PARCEL, AND THE SOUTH LINE OF SAID TANK TRACT TO AND 3' WADOUT
 STREET, A DISTANCE OF 27.00 FEET TO A POINT MONUMENTED BY A BRASS CAP;

THENCE N45°00'00" W, ALONG THE NORTH LINE OF THE PARCEL, AND THE SOUTH LINE OF SAID TANK TRACT TO AND 3' WADOUT
 STREET, A DISTANCE OF 27.00 FEET TO A POINT MONUMENTED BY A BRASS CAP;
 THENCE N45°00'00" W, ALONG THE NORTH LINE OF THE PARCEL, AND THE SOUTH LINE OF SAID TANK TRACT TO AND 3' WADOUT
 STREET, A DISTANCE OF 27.00 FEET TO A POINT MONUMENTED BY A BRASS CAP;

THENCE N45°00'00" W, ALONG THE NORTH LINE OF THE PARCEL, AND THE SOUTH LINE OF SAID TANK TRACT TO AND 3' WADOUT
 STREET, A DISTANCE OF 27.00 FEET TO A POINT MONUMENTED BY A BRASS CAP;
 THENCE N45°00'00" W, ALONG THE NORTH LINE OF THE PARCEL, AND THE SOUTH LINE OF SAID TANK TRACT TO AND 3' WADOUT
 STREET, A DISTANCE OF 27.00 FEET TO A POINT MONUMENTED BY A BRASS CAP;

THENCE N45°00'00" W, ALONG THE NORTH LINE OF THE PARCEL, AND THE SOUTH LINE OF SAID TANK TRACT TO AND 3' WADOUT
 STREET, A DISTANCE OF 27.00 FEET TO A POINT MONUMENTED BY A BRASS CAP;
 THENCE N45°00'00" W, ALONG THE NORTH LINE OF THE PARCEL, AND THE SOUTH LINE OF SAID TANK TRACT TO AND 3' WADOUT
 STREET, A DISTANCE OF 27.00 FEET TO A POINT MONUMENTED BY A BRASS CAP;

THENCE N45°00'00" W, ALONG THE NORTH LINE OF THE PARCEL, AND THE SOUTH LINE OF SAID TANK TRACT TO AND 3' WADOUT
 STREET, A DISTANCE OF 27.00 FEET TO A POINT MONUMENTED BY A BRASS CAP;
 THENCE N45°00'00" W, ALONG THE NORTH LINE OF THE PARCEL, AND THE SOUTH LINE OF SAID TANK TRACT TO AND 3' WADOUT
 STREET, A DISTANCE OF 27.00 FEET TO A POINT MONUMENTED BY A BRASS CAP;

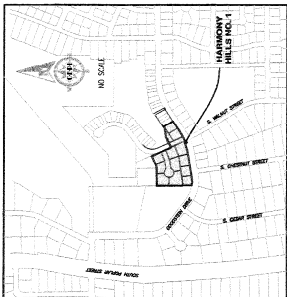
THENCE N45°00'00" W, ALONG THE NORTH LINE OF THE PARCEL, AND THE SOUTH LINE OF SAID TANK TRACT TO AND 3' WADOUT
 STREET, A DISTANCE OF 27.00 FEET TO A POINT MONUMENTED BY A BRASS CAP;
 THENCE N45°00'00" W, ALONG THE NORTH LINE OF THE PARCEL, AND THE SOUTH LINE OF SAID TANK TRACT TO AND 3' WADOUT
 STREET, A DISTANCE OF 27.00 FEET TO A POINT MONUMENTED BY A BRASS CAP;

THENCE N45°00'00" W, ALONG THE NORTH LINE OF THE PARCEL, AND THE SOUTH LINE OF SAID TANK TRACT TO AND 3' WADOUT
 STREET, A DISTANCE OF 27.00 FEET TO A POINT MONUMENTED BY A BRASS CAP;
 THENCE N45°00'00" W, ALONG THE NORTH LINE OF THE PARCEL, AND THE SOUTH LINE OF SAID TANK TRACT TO AND 3' WADOUT
 STREET, A DISTANCE OF 27.00 FEET TO A POINT MONUMENTED BY A BRASS CAP;

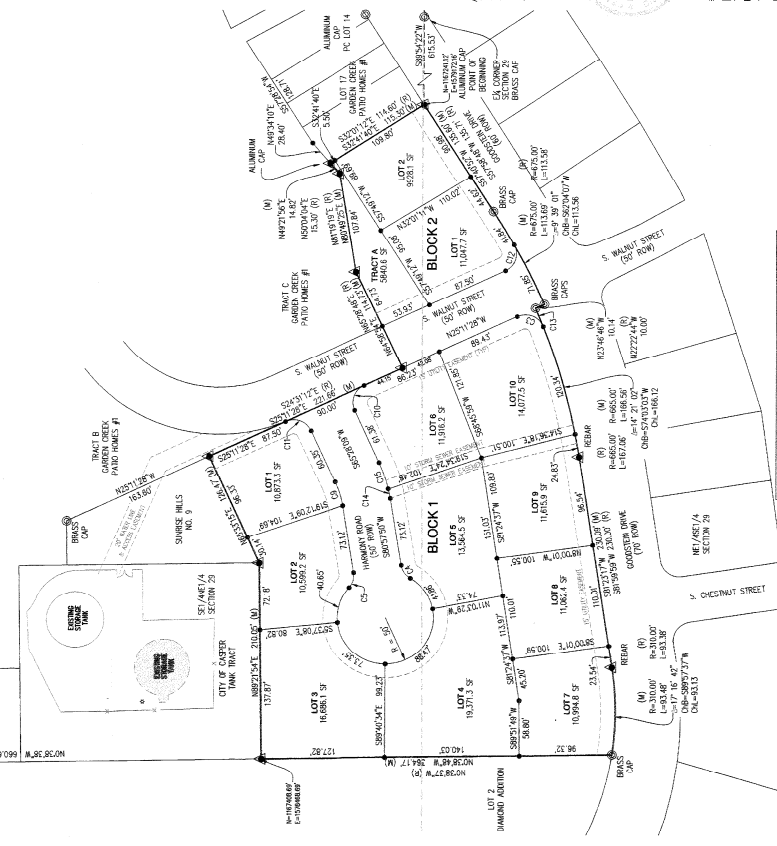
THENCE N45°00'00" W, ALONG THE NORTH LINE OF THE PARCEL, AND THE SOUTH LINE OF SAID TANK TRACT TO AND 3' WADOUT
 STREET, A DISTANCE OF 27.00 FEET TO A POINT MONUMENTED BY A BRASS CAP;
 THENCE N45°00'00" W, ALONG THE NORTH LINE OF THE PARCEL, AND THE SOUTH LINE OF SAID TANK TRACT TO AND 3' WADOUT
 STREET, A DISTANCE OF 27.00 FEET TO A POINT MONUMENTED BY A BRASS CAP;

THENCE N45°00'00" W, ALONG THE NORTH LINE OF THE PARCEL, AND THE SOUTH LINE OF SAID TANK TRACT TO AND 3' WADOUT
 STREET, A DISTANCE OF 27.00 FEET TO A POINT MONUMENTED BY A BRASS CAP;
 THENCE N45°00'00" W, ALONG THE NORTH LINE OF THE PARCEL, AND THE SOUTH LINE OF SAID TANK TRACT TO AND 3' WADOUT
 STREET, A DISTANCE OF 27.00 FEET TO A POINT MONUMENTED BY A BRASS CAP;

THENCE N45°00'00" W, ALONG THE NORTH LINE OF THE PARCEL, AND THE SOUTH LINE OF SAID TANK TRACT TO AND 3' WADOUT
 STREET, A DISTANCE OF 27.00 FEET TO A POINT MONUMENTED BY A BRASS CAP;
 THENCE N45°00'00" W, ALONG THE NORTH LINE OF THE PARCEL, AND THE SOUTH LINE OF SAID TANK TRACT TO AND 3' WADOUT
 STREET, A DISTANCE OF 27.00 FEET TO A POINT MONUMENTED BY A BRASS CAP;



VICINITY MAP
 NO SCALE



CURVE TABLE

CURVE #	RADIUS	ARC LENGTH	BETA	CH 8	CH 9
C1	20.00'	32.76'	93°54'36"	16.2500'	29.23
C2	20.00'	17.45'	49°59'41"	8.9250'	16.99
C3	20.00'	27.04'	75°04'	13.7250'	26.96
C4	20.00'	31.19'	89°20'24"	16.0750'	28.11
C5	20.00'	34.85'	102°39'36"	17.2250'	29.46
C6	20.00'	39.25'	115°00'00"	18.4750'	31.01
C7	20.00'	43.38'	126°22'44"	19.8250'	32.76
C8	20.00'	47.18'	136°00'00"	21.2750'	34.71
C9	20.00'	50.67'	144°30'00"	22.8250'	36.86
C10	20.00'	53.88'	151°30'00"	24.4750'	39.21
C11	20.00'	56.83'	157°30'00"	26.2250'	41.76
C12	20.00'	59.55'	162°30'00"	28.0750'	44.51
C13	20.00'	62.07'	166°30'00"	30.0250'	47.46
C14	20.00'	64.42'	169°30'00"	32.1750'	50.61
C15	20.00'	66.54'	171°30'00"	34.5250'	53.96



CERTIFICATE OF SURVEYOR
 I, WILLIAM R. FEHRER, A REGISTERED PROFESSIONAL LAND SURVEYOR, HEREBY CERTIFY THAT THIS PLAT WAS MADE FROM NOTES TAKEN DURING AN ACTUAL SURVEY MADE UNDER MY DIRECT SUPERVISION IN ACCORDANCE WITH THE REQUIREMENTS OF THE WYOMING STATUTES AND ACCORDING TO THE BEST OF MY KNOWLEDGE AND BELIEF. ALL DIMENSIONS ARE EXPRESSED IN FEET AND DECIMALS THEREOF. THIS SURVEY IS REFERRED TO THE WYOMING STATE PLANE COORDINATE SYSTEM, EAST CENTRAL ZONE, AND 1983/NA, CITY OF CASPER. THIS SYSTEM IS THE BEST OF MY KNOWLEDGE AND BELIEF.

THE FOREGOING INSTRUMENT WAS ACKNOWLEDGED BEFORE ME BY WILLIAM R. FEHRER
 THIS 8th DAY OF JANUARY, 2015.
 WITNESS MY HAND AND OFFICIAL SEAL
 AT COMMISSION EXPIRES: 12/16/16

WITNESS MY HAND AND OFFICIAL SEAL
 AT COMMISSION EXPIRES: 12/16/16

APPROVALS
 APPROVED BY THE CITY OF CASPER PLANNING AND ZONING COMMISSION OF CASPER, WYOMING
 THIS 30th DAY OF October, 2014.
 ATTEST: Lynda Becker CITY CLERK
 APPROVED BY THE CITY COUNCIL OF CASPER, WYOMING BY ORDINANCE NO. 3-14
 THIS DAY OF January, 2015.
 ATTEST: John H. ... CITY CLERK
 INSPECTED AND APPROVED THIS 15th DAY OF January, 2015.
 INSPECTED AND APPROVED THIS 13th DAY OF January, 2015.
 RECORDED
 THIS DAY OF January, 2015.
 INSTRUMENT NO. 985380

FILED FOR RECORD IN THE OFFICE OF THE COUNTY CLERK OF WYOMING COUNTY, WYOMING
 THIS DAY OF January, 2015.
 INSTRUMENT NO. 985380

NOTES:
 1. ERROR OF CLOSURE EXCEEDS 1:248.385.
 2. BASIS OF BEARINGS IS THE WYOMING STATE PLANE COORDINATE SYSTEM, EAST CENTRAL ZONE, AND 1983/NA.
 3. THE CONVERGENCE ANGLE AT THE POINT OF BEGINNING IS 0°00'00.00", AND THE
 CONVERGENCE FACTOR IS 0.000001.
 4. ALL DISTANCES ARE GROUND.

WITNESS MY HAND AND OFFICIAL SEAL
 AT COMMISSION EXPIRES: 12/16/16

WITNESS MY HAND AND OFFICIAL SEAL
 AT COMMISSION EXPIRES: 12/16/16

WITNESS MY HAND AND OFFICIAL SEAL
 AT COMMISSION EXPIRES: 12/16/16

WITNESS MY HAND AND OFFICIAL SEAL
 AT COMMISSION EXPIRES: 12/16/16

WITNESS MY HAND AND OFFICIAL SEAL
 AT COMMISSION EXPIRES: 12/16/16

WITNESS MY HAND AND OFFICIAL SEAL
 AT COMMISSION EXPIRES: 12/16/16

WITNESS MY HAND AND OFFICIAL SEAL
 AT COMMISSION EXPIRES: 12/16/16

