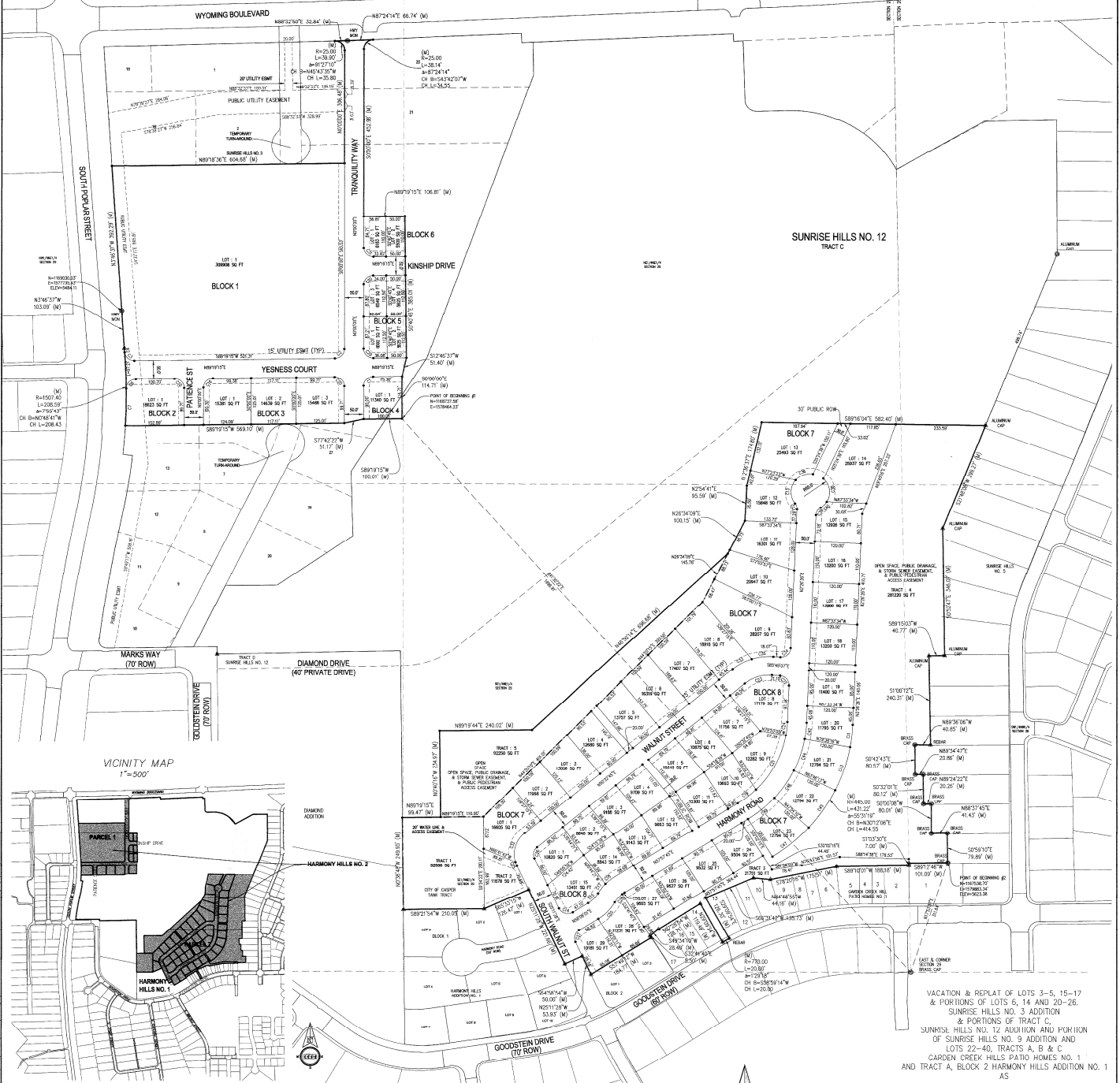


CURVE TABLE						CURVE TABLE						CURVE TABLE					
CURVE #	RADIUS	ARC LENGTH	DELTA	CH B	CH L	CURVE #	RADIUS	ARC LENGTH	DELTA	CH B	CH L	CURVE #	RADIUS	ARC LENGTH	DELTA	CH B	CH L
C1	25.00'	38.97'	89°19'17"	54.473737'	35.15	C25	75.00'	11.93'	79°08'43"	107.387971'	11.92	C46	325.00'	90.00'	15°51'58"	434.974672'	89.71
C2	25.00'	38.97'	89°19'17"	54.473737'	35.15	C26	75.00'	33.00'	79°04'11"	107.407367'	33.00	C47	445.00'	123.23'	10°25'58"	559.074672'	123.23
C3	25.00'	36.45'	83°32'54"	48.657673'	43.31	C27	25.00'	36.36'	83°19'29"	106.587673'	33.24	C48	325.00'	90.00'	15°51'58"	434.974672'	89.71
C4	1587.40'	11.29'	0°28'42"	104.319276'	11.29	C28	75.00'	29.40'	22°36'31"	104.747373'	28.41	C49	75.00'	7.67'	5°51'28"	105.972072'	7.66
C7	1087.40'	10.00'	3°48'15"	107.510737'	10.00	C29	25.00'	39.57'	90°40'45"	104.570737'	35.56	C50	125.00'	63.47'	28°30'00"	104.348272'	61.82
C8	25.00'	39.26'	89°58'19"	104.570737'	35.56	C30	25.00'	38.97'	89°19'17"	104.570737'	35.15						
C10	25.00'	39.57'	90°40'45"	104.570737'	35.56	C31	25.00'	39.57'	90°40'45"	104.570737'	35.56						
C12	25.00'	17.48'	40°13'54"	117.352373'	17.13	C32	75.00'	87.21'	66°37'21"	107.741071'	82.38						
C13	50.00'	68.17'	78°03'34"	117.418718'	62.97	C33	150.00'	57.12'	21°49'14"	106.171771'	56.77						
C14	25.00'	42.18'	98°40'31"	107.311447'	37.35	C34	25.00'	40.79'	93°28'54"	104.728276'	36.41						
C15	75.00'	37.49'	28°38'23"	104.348276'	37.10	C35	150.00'	57.12'	21°49'14"	106.171771'	56.77						
C16	25.00'	38.97'	89°19'17"	104.570737'	35.15	C36	50.00'	50.19'	57°31'05"	106.911738'	48.11						
C17	123.00'	31.94'	14°38'25"	106.462472'	31.86	C38	50.00'	65.18'	79°08'00"	106.923737'	63.67						
C18	125.00'	33.17'	13°49'48"	105.972072'	33.10	C39	25.00'	24.17'	59°23'16"	103.908072'	23.24						
C19	275.00'	80.28'	12°34'59"	101.921676'	80.27	C40	50.00'	23.41'	28°49'36"	104.424572'	23.20						
C20	25.00'	39.57'	90°40'45"	104.570737'	35.56	C41	445.00'	61.53'	7°55'17"	502.942676'	61.48						
C21	275.00'	108.26'	33°15'31"	107.443576'	108.26	C42	325.00'	44.94'	7°55'20"	107.241072'	44.83						
C22	25.00'	38.97'	89°19'17"	104.570737'	35.15	C43	445.00'	123.23'	10°25'58"	559.074672'	123.24						
C23	100.00'	76.16'	43°38'04"	107.221476'	74.33	C44	325.00'	90.00'	10°25'58"	107.241072'	89.71						
C24	275.00'	36.84'	74°07'48"	106.164740'	36.81	C45	445.00'	123.23'	10°25'58"	559.074672'	123.24						



VACATION & REPLAT OF LOTS 3-5, 15-17 & PORTIONS OF LOTS 6, 14 AND 20-26, SUNSHINE HILLS NO. 3 ADDITION & PORTIONS OF TRACT C, SUNSHINE HILLS NO. 12 ADDITION AND PORTION OF LOTS 22-40, TRACTS A, B & C, CARDEN CREEK HILLS PATIO HOMES NO. 1 AND TRACT A, BLOCK 2 HARMONY HILLS ADDITION NO. 1 AS

**HARMONY HILLS ADDITION NO. 2
 PHASE 1**
 AN ADDITION TO THE CITY OF CASPER, WYOMING
 BEING A PORTION OF THE W9064'S OF SECTION 28 AND THE N9064'S AND THE S9064'S OF SECTION 29 T.33N., R.79W., E1/4 N.M.
 NATRONA COUNTY WYOMING
 MARCH, 2015
 N.C. #14-051
 SHEET 2 OF 2

CEPI
 Civil Engineering Professionals, Inc.
 6000 Enterprise Drive, Casper, WY 82409
 Phone: 307.256.4396 Fax: 307.256.0523
 www.cepi-casper.com

LEGEND

- ▲ SET BRASS CAP
- SET MONUMENT 5/8" REBAR & ALUMINUM CAP
- FOUND MONUMENT AS NOTED

** ALL PUBLIC UTILITY EASEMENTS **
 ALONG STREET FRONTS TO BE 15'
 UNLESS OTHERWISE NOTED

0 100' 200'

M:\s\2015\CEPI\2015-051\Harmony Hills\Survey\GIS\Map\Main\Map_1.dwg, 7/2/2015, 8:11 AM

