

234/10 965

PLAT OF HAT SIX RANCH ADDITION NO. 10

PLAT OF
HAT SIX ADDITION NO. 1

A SUBDIVISION OF
SW $\frac{1}{4}$ NW $\frac{1}{4}$ and W $\frac{1}{2}$ SW $\frac{1}{4}$ SEC. 13, S $\frac{1}{2}$ NE $\frac{1}{4}$ and SE $\frac{1}{4}$ SEC. 14,
E $\frac{1}{2}$ NE $\frac{1}{4}$ SEC. 23, and W $\frac{1}{2}$ NW $\frac{1}{4}$ and NE $\frac{1}{4}$ NW $\frac{1}{4}$ SEC. 24.
T. 32 N., R. 79 W. 6th P.M.
NATRONA COUNTY, WYOMING.

NOTE: Lots bordered by Access Roads are measured to the center of Road.

CERTIFICATE OF DEDICATION

HAT SIX RANCH CORPORATION, a Wyoming Corporation, does hereby certify that the foregoing Subdivision of the SW $\frac{1}{4}$ NW $\frac{1}{4}$ and W $\frac{1}{2}$ SW $\frac{1}{4}$ of Sec. 13, S $\frac{1}{2}$ NE $\frac{1}{4}$ and SE $\frac{1}{4}$ of Sec. 14, E $\frac{1}{2}$ NE $\frac{1}{4}$ of Sec. 23, W $\frac{1}{2}$ NW $\frac{1}{4}$ and NE $\frac{1}{4}$ NW $\frac{1}{4}$ of Sec. 24, T. 32 N., R. 79 W. of the 6th P.M., Natrona County, Wyoming, being more particularly described by perimeter metes and bounds as follows:
Beginning at the NE Corner of the SW $\frac{1}{4}$ NW $\frac{1}{4}$ of Section 13, T. 32 N., R. 79 W., said corner being 9.49°14'E. 1845.1' from NW corner of Section 13, T. 32 N., R. 79 W., thence S. 86°37'W. 1343.93' to the N $\frac{1}{2}$ Corner on the West Line of Sec. 13, thence N. 89°36'W. 2672.63' to a point, thence S. 0°54'W. 3855.06' to the S $\frac{1}{4}$ Corner of Sec. 14, thence S. 89°17'E. 1337.32' to a point, thence S. 0°04'E. 2574.17' to a point, thence S. 89°11'E. 1341.78' to the E $\frac{1}{2}$ Corner of Section 23, thence N. 88°20'E. 1351.68' to a point, thence N. 1°03'W. 1294.26' to a point, thence N. 88°05'E. 1352.01' to a point, thence N. 0°55'W. 1299.54' to the NW Corner of Section 24, thence S. 87°50'W. 1352.34' to a point, thence N. 0°41'E. 2594.81' to a point, thence N. 0°52'E. 1288.22' to the point of beginning, containing 560 acres, more or less.

as appears on this plat is with the free consent and in accordance with the desires of the undersigned owners and proprietors of the foregoing subdivision, that the name of said subdivision shall be "HAT SIX ADDITION NO. 1" and that all roads and public ways as shown on this plat are hereby dedicated to the use of the public.

Dated at Casper, Wyoming this 27 day of May, 1971.
HAT SIX RANCH CORPORATION, a Wyoming Corporation

ATTEST: Boris Kicken
BORIS KICKEN, SECRETARY
BY: C.R. Chaput
C.R. CHAPUT, PRESIDENT

STATE OF WYOMING 55
COUNTY OF NATRONA
On this 27 day of May, 1971 before me personally appeared C.R. Chaput, to me personally known who, by me being duly sworn, did say that he is the President of HAT SIX RANCH CORPORATION, a Wyoming Corporation, and that the seal affixed to the foregoing instrument is the corporate seal of said corporation, and that said instrument was signed and sealed on behalf of said corporation by authority of the Board of Directors of said corporation, and said C.R. Chaput acknowledged said instrument to be the free act and deed of said corporation.

Given under my hand and notarial seal on the day and year first above written
My commission expires: 1-14-72
Lawrence E. Midkiff
NOTARY PUBLIC

CERTIFICATE OF SURVEYOR

STATE OF WYOMING 55
COUNTY OF NATRONA
I, W.W. Butler of Casper, Wyoming do hereby certify that this plat was prepared from notes taken during an actual survey made under my supervision during the months of August, September, October and November, 1970, and that such plat correctly represents such survey and "HAT SIX ADDITION NO. 1" a subdivision of the SW $\frac{1}{4}$ NW $\frac{1}{4}$ and the W $\frac{1}{2}$ SW $\frac{1}{4}$ of Section 13, S $\frac{1}{2}$ NE $\frac{1}{4}$ and the SE $\frac{1}{4}$ of Section 14, E $\frac{1}{2}$ NE $\frac{1}{4}$ of Section 23, and the W $\frac{1}{2}$ NW $\frac{1}{4}$ and NE $\frac{1}{4}$ NW $\frac{1}{4}$ of Section 24, T. 32 N., R. 79 W. of the 6th P.M., Natrona County, Wyoming. All lots are properly marked and identified, all dimensions are expressed in feet and decimals thereof and all courses referred to the true meridian as determined by direct solar observation; such survey as represented hereon is correct to the best of my knowledge and belief.

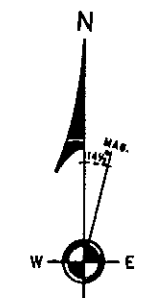
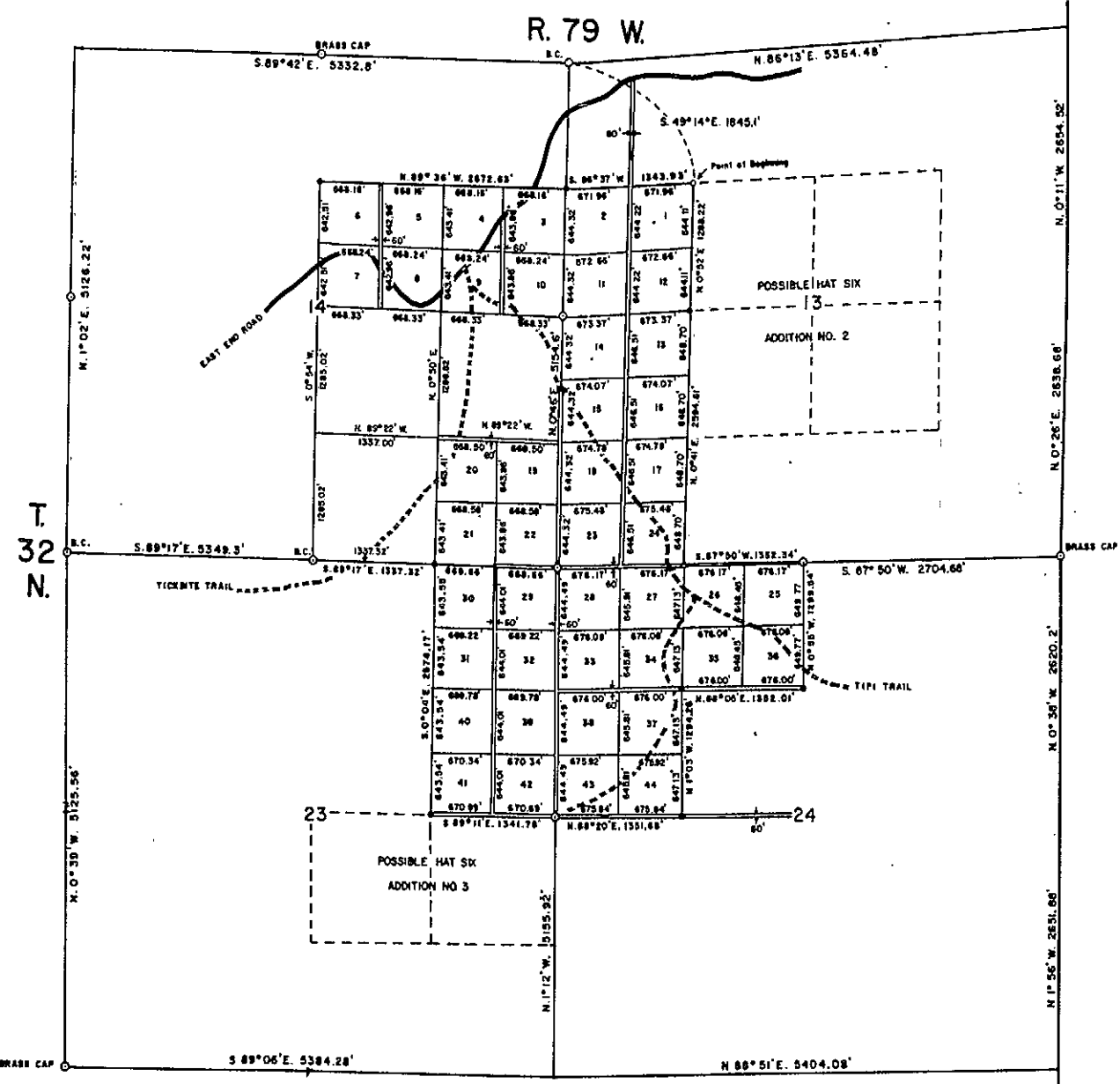
Wyoming Registration No. 426 Professional Engineer and Land Surveyor
W.W. Butler
W.W. Butler, Surveyor
Subscribed in my presence and sworn to before me on this 27 day of May 1971
My commission expires 1-14-72
Lawrence E. Midkiff
NOTARY PUBLIC

PLAT APPROVED

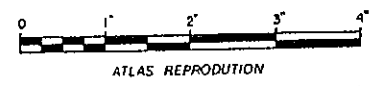
Approved by the Board of County Commissioners, Natrona County, Wyoming, by Resolution duly passed on _____ day of _____ 1971.
Attest: John P. Bunk
COUNTY CLERK My Term of Office Expires January 6, 1975
CHAIRMAN OF THE BOARD

Inspected and Approved on the 22nd day of June 1971.
George R. Hughes
COUNTY SURVEYOR

Filed for record in the Office of the County Clerk of Natrona County, Wyoming on this 12th day of July 1971
John P. Bunk
COUNTY CLERK



Scale: 1" = 800'



HAT SIX ADDITION No. 1
PORTIONS OF SEC'S. 13, 14, 23 & 24 - T. 32 N., R. 79 W. 6th P.M.
NATRONA COUNTY, WYOMING.

ATLAS REPRODUCTION