

237/350

970

HAT SIX RANCH ADDN. Folder 2

### PLAT OF HAT SIX ADDITION NO. 2

A SUBDIVISION OF  
W 1/2 E 1/2 and E 1/2 W 1/2 Sec. 13,  
NW 1/4 NE 1/4 Sec. 24  
T.32N., R.79W. 6th P.M.  
NATRONA COUNTY, WYOMING

RECORDED IN THE OFFICE OF THE COUNTY CLERK OF NATRONA COUNTY, WYOMING, IN BOOK 227 OF PLATS, PAGE 118542.

#### CERTIFICATE OF DEDICATION

HAT SIX RANCH CORPORATION, a Wyoming Corporation, does hereby certify that the foregoing Subdivision of the W 1/2 E 1/2 and E 1/2 W 1/2 of Section 13, NW 1/4 NE 1/4 of Section 24, Township 32 North, Range 79 West of the 6th Principal Meridian, Natrona County, Wyoming, being more particularly described by perimeter metes and bounds as follows:

Beginning at the NW Corner of the NE 1/4 NW 1/4 of Section 13, Township 32 North, Range 79 West thence S. 0° 31' W. 2596.60' to a point, thence S. 0° 41' W. 2592.68' to a point, thence N. 87° 50' E. 1332.34' to the N 1/4 Corner of Section 24, thence S. 0° 55' E. 1295.54' to a point, thence N. 88° 05' E. 1352.00' to a point, thence N. 0° 46' W. 1304.82' to a point, thence N. 0° 31' E. 2623.36' to a point, thence N. 0° 03' E. 2625.52' to a point, thence S. 86° 13' W. 2682.24' to the point of beginning, containing 360 acres, more or less.

as appears on this plat is with the free consent and in accordance with the desires of the undersigned owners and proprietors of the foregoing subdivision, that the name of said subdivision shall be "HAT SIX ADDITION NO. 2" and that all roads and public ways as shown on this plat are hereby dedicated to the use of the public.

Dated at Casper, Wyoming this 26 day of August, 1971.  
HAT SIX RANCH CORPORATION, a Wyoming Corporation

ATTEST: Boris Kicken  
BORIS KICKEN, SECRETARY

BY: C.R. Chaput  
C.R. CHAPUT, PRESIDENT

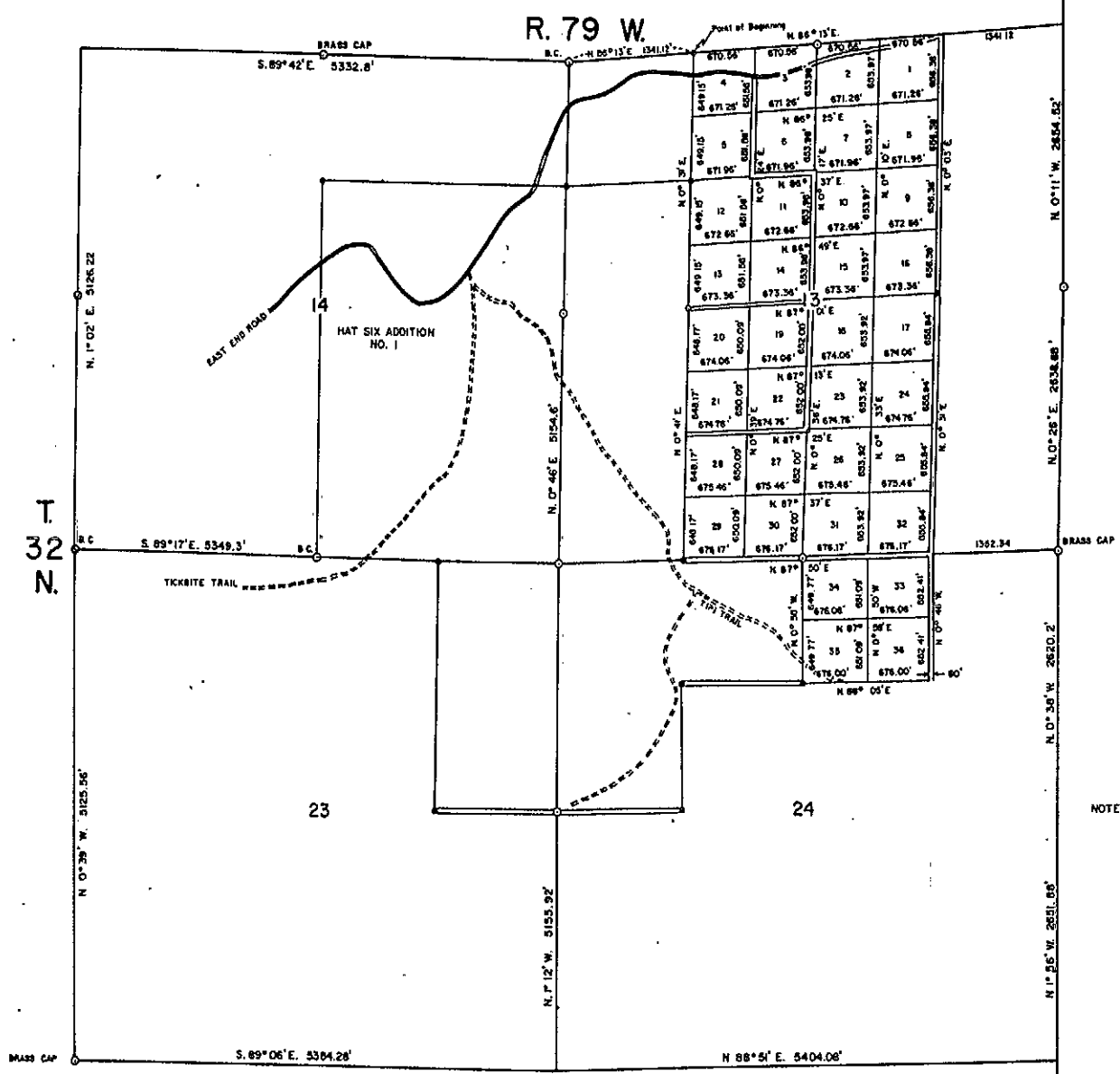
STATE OF WYOMING  
COUNTY OF NATRONA SS

On this 26 day of August, 1971 before me personally appeared C.R. Chaput, to me personally known who, by me being duly sworn, did say that he is the President of HAT SIX RANCH CORPORATION, a Wyoming Corporation, and that the seal affixed to the foregoing instrument is the corporate seal of said corporation, and that said instrument was signed and sealed on behalf of said corporation by authority of the Board of Directors of said corporation, and said C.R. Chaput acknowledge said instrument to be the free act and deed of said corporation.

Given under my hand and notarial seal on the day and year first above written  
My commission expires: Jan 14, 1972  
Lawrence E. McLaughlin  
NOTARY PUBLIC



Scale: 1" = 800'



NOTE: All Access Roads are 60' wide. All lots bordering roads are measured from Center Line of road.

### HAT SIX ADDITION No. 2

PORTIONS OF SEC'S. 13 & 24-T.32N., R.79W. 6th P.M.  
NATRONA COUNTY, WYOMING



ATLAS REPRODUCTION

#### CERTIFICATE OF SURVEYOR

STATE OF WYOMING  
COUNTY OF NATRONA SS

I, W.W. Butler of Casper, Wyoming do hereby certify that this plat was prepared from notes taken during an actual survey made under my supervision during the months of June, July, and August, 1971, and that such plat correctly represents such survey and "HAT SIX ADDITION NO. 2" a subdivision of the W 1/2 E 1/2 and E 1/2 W 1/2 of Section 13, NW 1/4 NE 1/4 of Section 24, Township 32 North, Range 79 West of the 6th Principal Meridian, Natrona County, Wyoming. All lots are properly marked and identified, all dimensions are expressed in feet and decimals thereof and all courses referred to the true meridian as determined by direct solar observation; such survey as represented hereon is correct to the best of my knowledge and belief.

Wyoming Registration No. 426 Professional Engineer and Land Surveyor

W.W. Butler  
W.W. Butler, Surveyor

Subscribed in my presence and sworn to before me on this 26 day of August, 1971.  
My commission expires: January 14, 1972  
Lawrence E. McLaughlin  
NOTARY PUBLIC

#### PLAT APPROVED

Approved by the Board of County Commissioners, Natrona County, Wyoming, by Resolution duly passed on the 5<sup>th</sup> day of June, 1971.

Attest: John A. Farn  
COUNTY CLERK  
In. Term of Office  
January 6, 1975

CHAIRMAN OF THE BOARD

Inspected and Approved on the 1<sup>st</sup> day of October, 1971.

W.W. Butler  
COUNTY SURVEYOR

Filed for record in the Office of the County Clerk of Natrona County, Wyoming on this 5<sup>th</sup> day of October, 1971.

John A. Farn  
COUNTY CLERK

357

358