

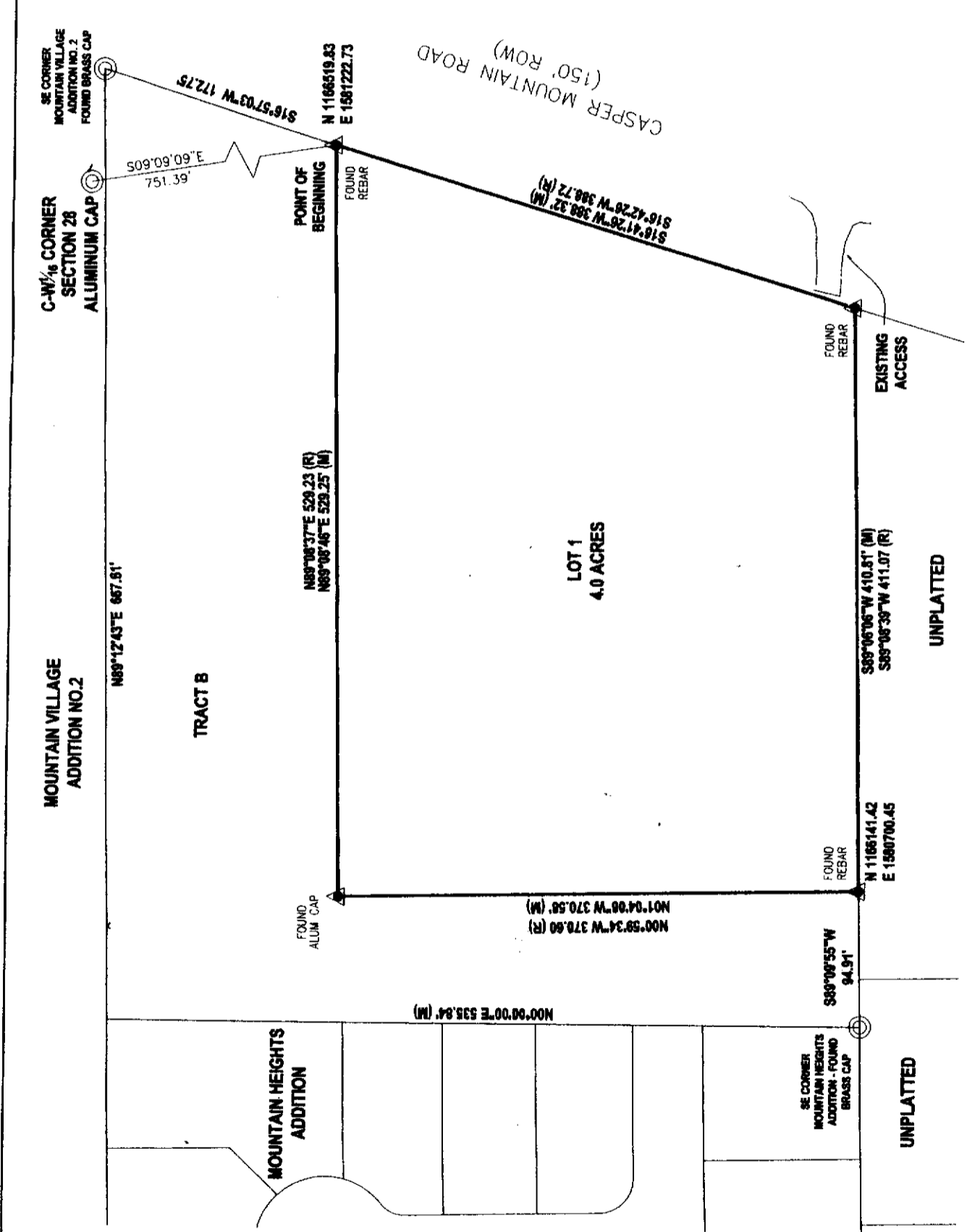


LEGEND
 ▲ SET BRASS CAP
 ● SET MONUMENT 5/8" REBAR
 ● SET ALUMINUM CAP
 ○ FOUND MONUMENT AS NOTED

cepi
 Civil Engineering Professionals, Inc.
 6807 Enterprise Drive, Casper, WY 82509
 Phone 307.266.4346 Fax 307.266.0863
 www.cepi-casper.com

913855
 PREPARED JULY 27, 2011

LEGEND
 ▲ SET BRASS CAP
 ● SET MONUMENT 5/8" REBAR
 ● SET ALUMINUM CAP
 ○ FOUND MONUMENT AS NOTED



CERTIFICATE OF DEDICATION

STATE OF WYOMING
 COUNTY OF NATRONA } ss
 THE UNDERSIGNED, R. L. DEVALLOMANT, INC., DOES HEREBY CERTIFY THAT THE ABOVE IS THE TRUE AND CORRECT COPY OF THE FOLLOWING DESCRIBED PARCEL OF LAND, SITING IN THE S1/4 OF SECTION 28, T.33N., R.79W., 6TH P.M., NATRONA COUNTY, WYOMING, BEING MORE PARTICULARLY DESCRIBED AS FOLLOWS:
 COMMENCING AT THE C-1/4 CORNER OF SAID SECTION 28, MONUMENTED BY AN ALUMINUM CAP; THENCE S09°08'37\"/>

R. L. DEVALLOMANT, INC.
 471 SOUTH CENTER STREET
 CASPER, WYOMING 82601

USA SURVEYOR - PRESIDENT
 THE FOREGOING INSTRUMENT WAS ACKNOWLEDGED BEFORE ME BY LISA R. FERRENBERG, PRESIDENT OF R. L. DEVALLOMANT, INC., THIS 27TH DAY OF JULY, 2011.
 WITNESS MY HAND AND OFFICIAL SEAL
 BY COMMISSION EXPIRES 11/15/15
 NOTARY PUBLIC

CERTIFICATE OF SURVEYOR

STATE OF WYOMING
 COUNTY OF NATRONA } ss
 I, WILLIAM R. FERRENBERG, A REGISTERED PROFESSIONAL LAND SURVEYOR, LICENSE NO. 10000, DO HEREBY CERTIFY THAT THE ABOVE IS THE TRUE AND CORRECT COPY OF THE FOLLOWING DESCRIBED PARCEL OF LAND, SITING IN THE S1/4 OF SECTION 28, T.33N., R.79W., 6TH P.M., NATRONA COUNTY, WYOMING, BEING MORE PARTICULARLY DESCRIBED AS FOLLOWS:
 COMMENCING AT THE C-1/4 CORNER OF SAID SECTION 28, MONUMENTED BY AN ALUMINUM CAP; THENCE S09°08'37\"/>



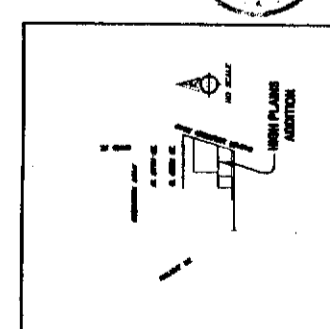
THE FOREGOING INSTRUMENT WAS ACKNOWLEDGED BEFORE ME BY WILLIAM R. FERRENBERG THIS 27TH DAY OF JULY, 2011.
 WITNESS MY HAND AND OFFICIAL SEAL
 BY COMMISSION EXPIRES 11/15/15
 NOTARY PUBLIC



RECORDED
 FILED FOR RECORD IN THE OFFICE OF THE COUNTY CLERK OF NATRONA COUNTY, WYOMING THIS 28TH DAY OF JULY, 2011.
 INSTRUMENT NO. 913855

APPROVALS
 APPROVED BY THE CITY OF CASPER PLANNING AND ZONING COMMISSION OF CASPER, WYOMING
 THIS 27th DAY OF JULY, 2011.
 ATTEST: *April Bachman* SECRETARY
 APPROVED BY THE CITY COUNCIL OF CASPER, WYOMING BY ORDINANCE NO. 2011-111 DAILY PASSED:
 APPROVED THIS 27th DAY OF July, 2011.
 ATTEST: *Paul C. Beckwith* MAYOR
 APPROVED THIS 27th DAY OF July, 2011.
 ATTEST: *Richard K. Boyd* CITY ENGINEER
 INSPECTED AND APPROVED THIS 27th DAY OF July, 2011.

NOTES
 1. ERROR OF CLOSURE EXCEEDS 1:24,000
 2. BASIS OF BEARINGS IS THE WYOMING STATE PLANE COORDINATE SYSTEM, EAST CENTRAL ZONE, NAD 1983/86, CITY OF CASPER DATUM
 3. THE CONVERSION FACTOR AT THE WEST 1/4 CORNER OF SECTION 28 IS 0.99450505, AND THE COMBINED FACTOR IS 0.9991919.



ANNEXATION AND PLAT OF A
 PORTION OF N4SW4 SECTION 28,
 T.33N., R.79W., 6TH P.M.
 NATRONA COUNTY, WYOMING
 AS
HIGH PLAINS ADDITION
 TO THE CITY OF CASPER, WYOMING