

346720

#1062

**SURVEY & PLAT BY**  
**BELL, GALYARDT & ASSOCIATES**  
 P.O. BOX 7197 RAPID CITY, SOUTH DAKOTA 57709  
 NOVEMBER 19, 1982

346720

Homax Subdivision  
 Instrument #346720  
 Recorded February 17, 1983

RECORDED Feb 17 83  
 JOHN L. ...

PLAT OF  
**"HOMAX SUBDIVISION"**  
**AN ADDITION TO THE TOWN OF MILLS, WYOMING**  
 A SUBDIVISION OF A PORTION OF THE  
 NW 1/4 BE 1/4, SECTION 8  
 TOWNSHIP 33 NORTH, RANGE 79 WEST  
 SIXTH PRINCIPAL MERIDIAN  
 NATRONA COUNTY, WYOMING

REGEN  
 '83 FEB 17 10 2 31

SCALE: 1" = 100'

CERTIFICATE OF PLATTING

J.B.M., a Partnership, hereby certifies that they are the owners and proprietors of the foregoing subdivision, located in and being a portion of ...  
 Beginning at the point of the said NW 1/4, Sec. 8, T. 33 N., R. 79 W., S. 6th P.M.; thence S 89° 54' 14" W a distance of 472.14 feet to the "TRUE POINT OF BEGINNING"; thence S 89° 54' 14" W a distance of 214.05 feet to the southeasterly corner of said subdivision; thence N 85° 36' 1" W a distance of 485.93 feet to the northeasterly corner of said subdivision; thence N 85° 36' 1" W a distance of 349.87 feet to the north-easterly corner of said subdivision and a point in and intersection with the westerly line of said Salt Creek Highway; thence along the easterly line of said subdivision and the westerly line of said Highway S 31° 25' 29" E a distance of 102.54 feet to a point; thence along the arc of a true curve to the right, having a radius of 415.36 feet and through a central angle of 14 26' 32" and the chord thereof which bears S 24° 12' 13" E, 230.12 feet, southeasterly 230.12 feet to a point; thence S 70° 54' 14" W a distance of 216.74 feet to a point; thence S 70° 54' 14" W a distance of 121.29 feet to the "TRUE POINT OF BEGINNING" and containing 3.799 acres, more or less.

The subdivision of the foregoing described lands as appears on this Plat is with free consent and in accordance with the desires of the undersigned owners and proprietors; the name of subdivision shall be "HOMAX SUBDIVISION," an addition to the Town of Mills, Wyoming.

J.B.M. Partnership  
 475 South Poplar  
 Casper, Wyoming 82401

*James Hour*  
*Robert Homax*

ACKNOWLEDGEMENT

STATE OF WYOMING }  
 COUNTY OF NATRONA } ss

The foregoing instrument was acknowledged before me by James Hour and Robert Homax on this 28th day of November, 1982.

My hand and notarial seal, this 28th day of November, 1982.  
 Commission Expires: ...  
 Notary Public

APPROVALS

APPROVED: Council of Mills, Wyoming this 19th day of January, 1983.  
 Attest: *Thomas Johnson* Town Clerk

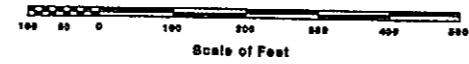
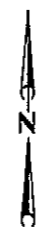
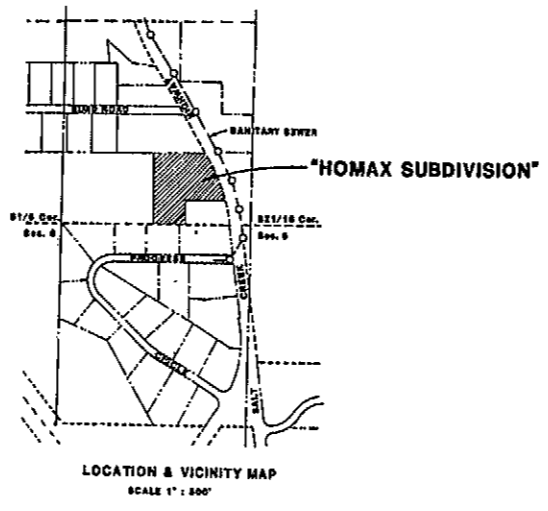
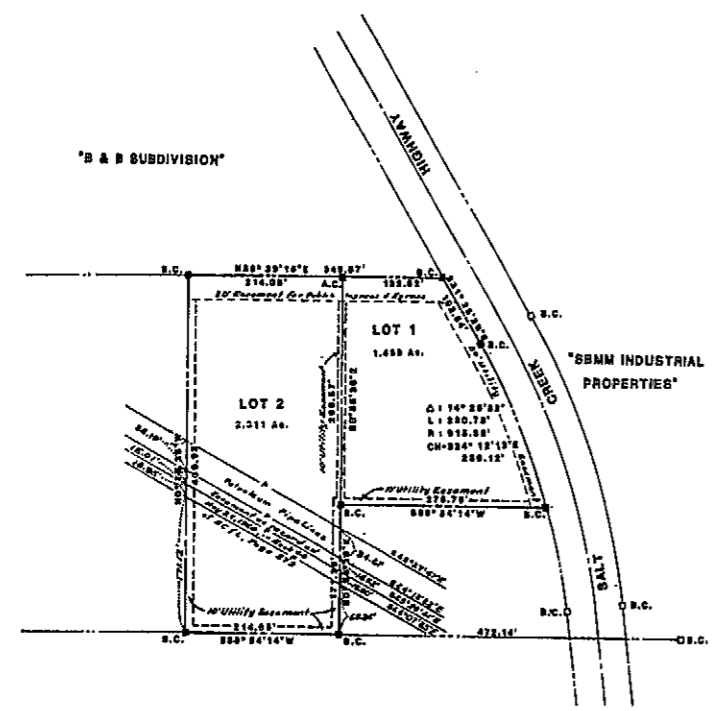
APPROVED: Board of County Commissioners of Natrona County by Resolution duly passed on the 22nd day of February, 1983.  
 Attest: *Frank L. Schultz* Chairman of the Board

INSPECTED AND APPROVED on this 19th day of January, 1983.  
 Town Engineer

INSPECTED AND APPROVED on this 16th day of February, 1983.  
 County Surveyor

INSPECTED AND APPROVED on this 10th day of February, 1983.  
 County Health Officer

Filed for Record in the Office of the County Clerk of Natrona County, Wyoming on this 17th day of February, 1983.  
 County Clerk



LEGEND:

- Brass Cap Corner
- Original Corner
- Local Corner
- 6/8" x 18" Rubber
- Brass Cap or Aluminum Cap Set
- Subdivision Boundary
- Essempol

PLAT CLOSURE RATIO IN EXCESS OF 1:10,000

CERTIFICATE OF SURVEY

I, David L. Kallenweyn of Rapid City, South Dakota, hereby certify that this plat was prepared from notes taken during actual surveys during November, 1982, under my direct supervision and that this Plat correctly and accurately reflects the same. All corners are well and accurately marked and all dimensions of the same are expressed in feet and decimals thereof and courses are expressed in true meridians. All bearings are true to the best of my knowledge and belief.

My commission expires: 12/31/83.  
 Notary Public

