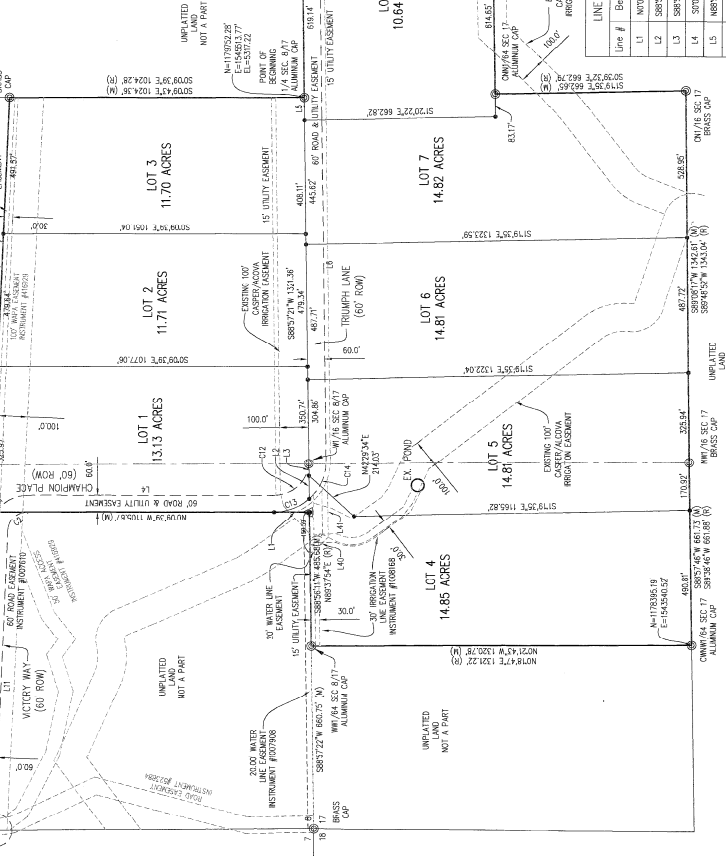
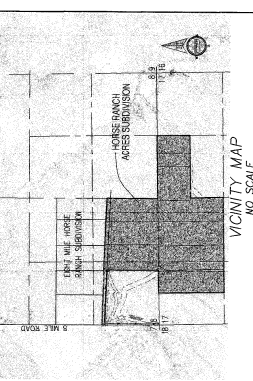


CERTIFICATE OF DEDICATION  
STATE OF WYOMING  
COUNTY OF NATRONA

1008807  
NATRONA COUNTY CLERK

THOMAS S. WALTERS & KAREL S. WALTERS & PINE RIDGE PROPERTIES, L.L.C. DO hereby dedicate to the public use and benefit of the State of Wyoming the following described parcel of land situated within the S34W1/4 of SECTION 8 AND ALL OF THE EAST HALF OF SECTION 9, T133N, R80W, 6TH 1/2M, NATRONA COUNTY WYOMING, BEING MORE PARTICULARLY DESCRIBED AS FOLLOWS:

CONCEPTS: 1. THE 2 ACRES PARCELS TO SAID SECTIONS 8 AND 17, MONUMENTED BY AN ALUMINUM CAP AND BEING THE POINT OF BEGINNING.  
THENCE NORTHWEST, ALONG THE NORTH LINE OF SAID SECTION 17, A DISTANCE OF EXACTLY FEET TO THE E.M. CORNER COMMON TO SAID SECTIONS 8 AND 17, MONUMENTED BY A BRASS CAP.  
THENCE S34D57W, ALONG THE EAST LINE OF THE MONUMENTED OF SAID SECTION 17, A DISTANCE OF 68.61 FEET TO THE CORNER CORNER OF SAID SECTION 17, MONUMENTED BY AN ALUMINUM CAP.  
THENCE S89D32W, ALONG THE SOUTH LINE OF THE MONUMENTED OF SAID SECTION 17, A DISTANCE OF 134.54 FEET TO THE CHINA CORNER OF SAID SECTION 17, MONUMENTED BY AN ALUMINUM CAP.  
THENCE S01D52E, ALONG THE EAST LINE OF THE MONUMENTED OF SAID SECTION 17, A DISTANCE OF 66.62 FEET TO THE CORNER OF SAID SECTION 17, MONUMENTED BY A BRASS CAP.  
THENCE S89D32W, ALONG THE SOUTH LINE OF THE MONUMENTED OF SAID SECTION 17, A DISTANCE OF 126.93 FEET TO THE NW CORNER OF SAID SECTION 17, MONUMENTED BY A BRASS CAP.  
THENCE S89D32W, ALONG THE SOUTH LINE OF THE MONUMENTED OF SAID SECTION 17, A DISTANCE OF 68.73 FEET TO THE CORNER CORNER OF SAID SECTION 17, MONUMENTED BY AN ALUMINUM CAP.  
THENCE NORTHWEST, ALONG THE WEST LINE OF THE MONUMENTED OF SAID SECTION 17, A DISTANCE OF 134.54 FEET TO THE CORNER CORNER OF SAID SECTION 17, MONUMENTED BY AN ALUMINUM CAP.  
THENCE S89D32W, ALONG THE SOUTH LINE OF THE MONUMENTED OF SAID SECTION 17, A DISTANCE OF 48.68 FEET TO A POINT MONUMENTED BY A BRASS CAP, A DISTANCE OF SAID SECTION 17, A DISTANCE OF 105.64 FEET TO THE NORTHEAST CORNER OF THE PARCEL, MONUMENTED BY AN ALUMINUM CAP.  
THENCE S89D32W, ALONG THE SOUTH LINE OF THE PARCEL ALSO BEING THE SOUTH LINE OF 8 & 17 HORSE RANCH SUBDIVISION, A DISTANCE OF 674.18 FEET TO THE NORTHEAST CORNER OF THE PARCEL, MONUMENTED BY AN ALUMINUM CAP.  
THENCE S01D52E, ALONG THE EAST LINE OF THE PARCEL AND THE SINK OF SAID SECTION 8, A DISTANCE OF 105.64 FEET TO THE POINT OF BEGINNING.  
THE MONUMENTS 1/2" DIA. ALUMINUM CAPS, BRASS CAPS, AND BRASS NAILS ARE TO BE SET IN CONFORMANCE WITH THE SURVEYING CODES AND STANDARDS WHICH HAVE BEEN LEGALLY ADOPTED.  
THE TRACT OF LAND AS IT APPEARS ON THIS PLAN, IS REDUCED WITH THE FREE CONSENT AND IN KNOWLEDGE OF THE UNDERSIGNED OWNERS AND PROPRIETORS. THE NAME OF THE SUBDIVISION SHALL BE ENTERED ON THE RECORDS OF THE COUNTY CLERK OF NATRONA COUNTY WYOMING. HEREBY AUTHORIZED TO THE PUBLIC USE AND UTILITY EASEMENTS AS SHOWN HEREON ARE HEREBY HEREBY DEDICATED TO THE PUBLIC USE AND UTILITY EASEMENTS AS SHOWN HEREON ARE HEREBY CONDUITS, UTILITY AND EASEMENTS, RESERVATIONS AND ENCUMBRANCES WHICH HAVE BEEN LEGALLY ADOPTED.



LINE TABLE

Line #	Bearing	Length	Curve #	Radius	Arc Length	Delta	Ch B	Ch L
L1	N07D58'W	122.85	C1	130.00'	109.95'	87°42'37"	144.0250' W	182.24
L2	S89D52'W	63.35'	C2	71.00'	107.23'	87°42'37"	144.0250' W	171.03
L3	S89D52'W	43.83'	C2	108.00'	103.34'	89D52'30"	545.9308' E	171.03
L4	S01D52'E	66.64'	C3	180.00'	134.38'	89D52'30"	545.9308' E	131.09
L5	N89D52'E	63.17'	C4	180.00'	103.34'	89D52'30"	545.9308' E	146.83
L6	S89D52'W	123.52'						
L7	S89D52'W	140.67'						
L8	S89D52'W	105.23'						
L9	S01D52'E	211.96'						

CURVE TABLE

Line #	Bearing	Length	Curve #	Radius	Arc Length	Delta	Ch B	Ch L
L1	N07D58'W	122.85	C1	130.00'	109.95'	87°42'37"	144.0250' W	182.24
L2	S89D52'W	63.35'	C2	71.00'	107.23'	87°42'37"	144.0250' W	171.03
L3	S89D52'W	43.83'	C2	108.00'	103.34'	89D52'30"	545.9308' E	171.03
L4	S01D52'E	66.64'	C3	180.00'	134.38'	89D52'30"	545.9308' E	131.09
L5	N89D52'E	63.17'	C4	180.00'	103.34'	89D52'30"	545.9308' E	146.83

NOTES:  
1. ERROR OF CLOSURE EXCEEDS 1:50,000.  
2. THE CONVERGENCE ANGLE AT THE POINT OF BEGINNING IS 103°52'48".  
3. ALL DISTANCES ARE GROUND.  
4. THE CONVERGENCE ANGLE AT THE POINT OF BEGINNING IS 103°52'48".  
5. ALL DISTANCES ARE GROUND.  
6. THE CONVERGENCE ANGLE AT THE POINT OF BEGINNING IS 103°52'48".  
7. THE CONVERGENCE ANGLE AT THE POINT OF BEGINNING IS 103°52'48".  
8. THE CONVERGENCE ANGLE AT THE POINT OF BEGINNING IS 103°52'48".

APPROVALS:  
APPROVED BY THE BOARD OF COUNTY COMMISSIONERS OF NATRONA COUNTY, WYOMING BY RESOLUTION PASSED THE DAY OF February 2013.  
ATTEST: *Paula Griffith* COUNTY CLERK  
INSPECTED AND APPROVED THIS 11 DAY OF March 2013.  
INSPECTED AND APPROVED THIS 04 DAY OF March 2013.  
INSPECTED AND APPROVED THIS 11 DAY OF March 2013.

LEGEND:  
● SET BRASS CAP  
● SET MONUMENT 6" x 6" REBAR  
○ FOUND MONUMENT AS NOTED

SCALE: 1" = 200'

8 MILE HORSE RANCH SUBDIVISION  
LOT 1 13.13 ACRES  
LOT 2 11.71 ACRES  
LOT 3 11.70 ACRES  
LOT 4 14.85 ACRES  
LOT 5 14.81 ACRES  
LOT 6 14.81 ACRES  
LOT 7 14.82 ACRES  
LOT 8 10.64 ACRES  
LOT 9 10.64 ACRES

STATE OF WYOMING  
COUNTY OF NATRONA  
CERTIFICATE OF SURVEYOR  
SS

PLAT OF A PORTION OF THE S34W1/4 SECTION 8 & THE EAST HALF OF SECTION 9, T133N, R80W, 6TH 1/2M, NATRONA COUNTY WYOMING

BEING A PORTION OF THE S34W1/4 SECTION 8 AND ALL OF THE EAST HALF OF SECTION 9, T133N, R80W, 6TH 1/2M, NATRONA COUNTY WYOMING

THOMAS S. WALTERS & KAREL S. WALTERS  
PINE RIDGE PROPERTIES, L.L.C.  
DAY OF March 2013  
WITNESSES MY HAND AND OFFICIAL SEAL  
ATTEST: *Paula Griffith* COUNTY CLERK

INSPECTED AND APPROVED THIS 11 DAY OF March 2013.  
INSPECTED AND APPROVED THIS 04 DAY OF March 2013.  
INSPECTED AND APPROVED THIS 11 DAY OF March 2013.

LEGEND:  
● SET BRASS CAP  
● SET MONUMENT 6" x 6" REBAR  
○ FOUND MONUMENT AS NOTED

SCALE: 1" = 200'

8 MILE HORSE RANCH SUBDIVISION  
LOT 1 13.13 ACRES  
LOT 2 11.71 ACRES  
LOT 3 11.70 ACRES  
LOT 4 14.85 ACRES  
LOT 5 14.81 ACRES  
LOT 6 14.81 ACRES  
LOT 7 14.82 ACRES  
LOT 8 10.64 ACRES  
LOT 9 10.64 ACRES

STATE OF WYOMING  
COUNTY OF NATRONA  
CERTIFICATE OF SURVEYOR  
SS

PLAT OF A PORTION OF THE S34W1/4 SECTION 8 & THE EAST HALF OF SECTION 9, T133N, R80W, 6TH 1/2M, NATRONA COUNTY WYOMING