

THE UNDERSIGNED, BEING THE REGISTERED PROFESSIONAL LAND SURVEYOR LICENSE NO. 5528, DO HEREBY CERTIFY THAT THIS PLAT WAS MADE FROM NOTES TAKEN DURING AN ACTUAL SURVEY MADE UNDER MY PERSONAL SUPERVISION AND ACCORDING TO THE BEST OF MY KNOWLEDGE AND BELIEF, CORRECTLY AND ACCURATELY REPRESENTS SAID SURVEY. ALL DIMENSIONS ARE EXPRESSED IN FEET AND DECIMALS THEREOF AND COURSES REFERRED TO THE TRUE MERIDIAN. ALL BEING TRUE AND CORRECT TO THE BEST OF MY KNOWLEDGE AND BELIEF.

CERTIFICATE OF SURVEYOR
 STATE OF WYOMING
 COUNTY OF NATRONA
 I, WILLIAM R. FEHRINGER, A REGISTERED PROFESSIONAL LAND SURVEYOR, LICENSE NO. 5528, DO HEREBY CERTIFY THAT THIS PLAT WAS MADE FROM NOTES TAKEN DURING AN ACTUAL SURVEY MADE UNDER MY PERSONAL SUPERVISION AND ACCORDING TO THE BEST OF MY KNOWLEDGE AND BELIEF, CORRECTLY AND ACCURATELY REPRESENTS SAID SURVEY. ALL DIMENSIONS ARE EXPRESSED IN FEET AND DECIMALS THEREOF AND COURSES REFERRED TO THE TRUE MERIDIAN. ALL BEING TRUE AND CORRECT TO THE BEST OF MY KNOWLEDGE AND BELIEF.

APPROVED BY THE CITY OF CASPER COMMUNITY DEVELOPMENT DIRECTOR THIS 17TH DAY OF APRIL, 2008.
 APPROVED AND APPROVED THIS 12TH DAY OF APRIL, 2008.
 CITY ENGINEER
 CITY SURVEYOR

INSPECTED AND APPROVED THIS 17TH DAY OF APRIL, 2008.
 INSPECTED AND APPROVED THIS 12TH DAY OF APRIL, 2008.
 CITY ENGINEER
 CITY SURVEYOR

CERTIFICATE OF DEDICATION
 STATE OF WYOMING
 COUNTY OF NATRONA

THE UNDERSIGNED, BEING THE REGISTERED PROFESSIONAL LAND SURVEYOR LICENSE NO. 5528, DO HEREBY CERTIFY THAT THIS PLAT WAS MADE FROM NOTES TAKEN DURING AN ACTUAL SURVEY MADE UNDER MY PERSONAL SUPERVISION AND ACCORDING TO THE BEST OF MY KNOWLEDGE AND BELIEF, CORRECTLY AND ACCURATELY REPRESENTS SAID SURVEY. ALL DIMENSIONS ARE EXPRESSED IN FEET AND DECIMALS THEREOF AND COURSES REFERRED TO THE TRUE MERIDIAN. ALL BEING TRUE AND CORRECT TO THE BEST OF MY KNOWLEDGE AND BELIEF.

APPROVED BY THE CITY OF CASPER COMMUNITY DEVELOPMENT DIRECTOR THIS 17TH DAY OF APRIL, 2008.
 APPROVED AND APPROVED THIS 12TH DAY OF APRIL, 2008.
 CITY ENGINEER
 CITY SURVEYOR

INSPECTED AND APPROVED THIS 17TH DAY OF APRIL, 2008.
 INSPECTED AND APPROVED THIS 12TH DAY OF APRIL, 2008.
 CITY ENGINEER
 CITY SURVEYOR

CERTIFICATE OF SURVEYOR
 STATE OF WYOMING
 COUNTY OF NATRONA
 I, WILLIAM R. FEHRINGER, A REGISTERED PROFESSIONAL LAND SURVEYOR, LICENSE NO. 5528, DO HEREBY CERTIFY THAT THIS PLAT WAS MADE FROM NOTES TAKEN DURING AN ACTUAL SURVEY MADE UNDER MY PERSONAL SUPERVISION AND ACCORDING TO THE BEST OF MY KNOWLEDGE AND BELIEF, CORRECTLY AND ACCURATELY REPRESENTS SAID SURVEY. ALL DIMENSIONS ARE EXPRESSED IN FEET AND DECIMALS THEREOF AND COURSES REFERRED TO THE TRUE MERIDIAN. ALL BEING TRUE AND CORRECT TO THE BEST OF MY KNOWLEDGE AND BELIEF.

APPROVED BY THE CITY OF CASPER COMMUNITY DEVELOPMENT DIRECTOR THIS 17TH DAY OF APRIL, 2008.
 APPROVED AND APPROVED THIS 12TH DAY OF APRIL, 2008.
 CITY ENGINEER
 CITY SURVEYOR

INSPECTED AND APPROVED THIS 17TH DAY OF APRIL, 2008.
 INSPECTED AND APPROVED THIS 12TH DAY OF APRIL, 2008.
 CITY ENGINEER
 CITY SURVEYOR

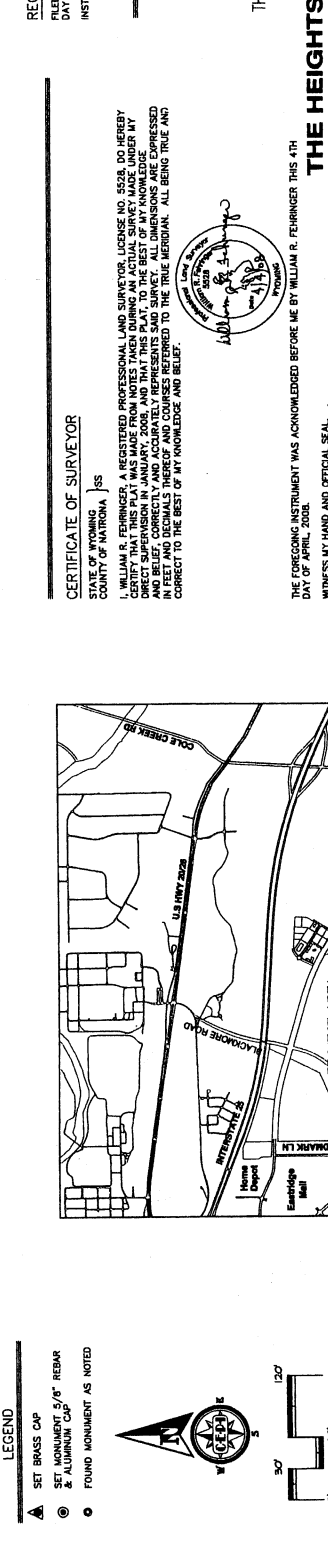
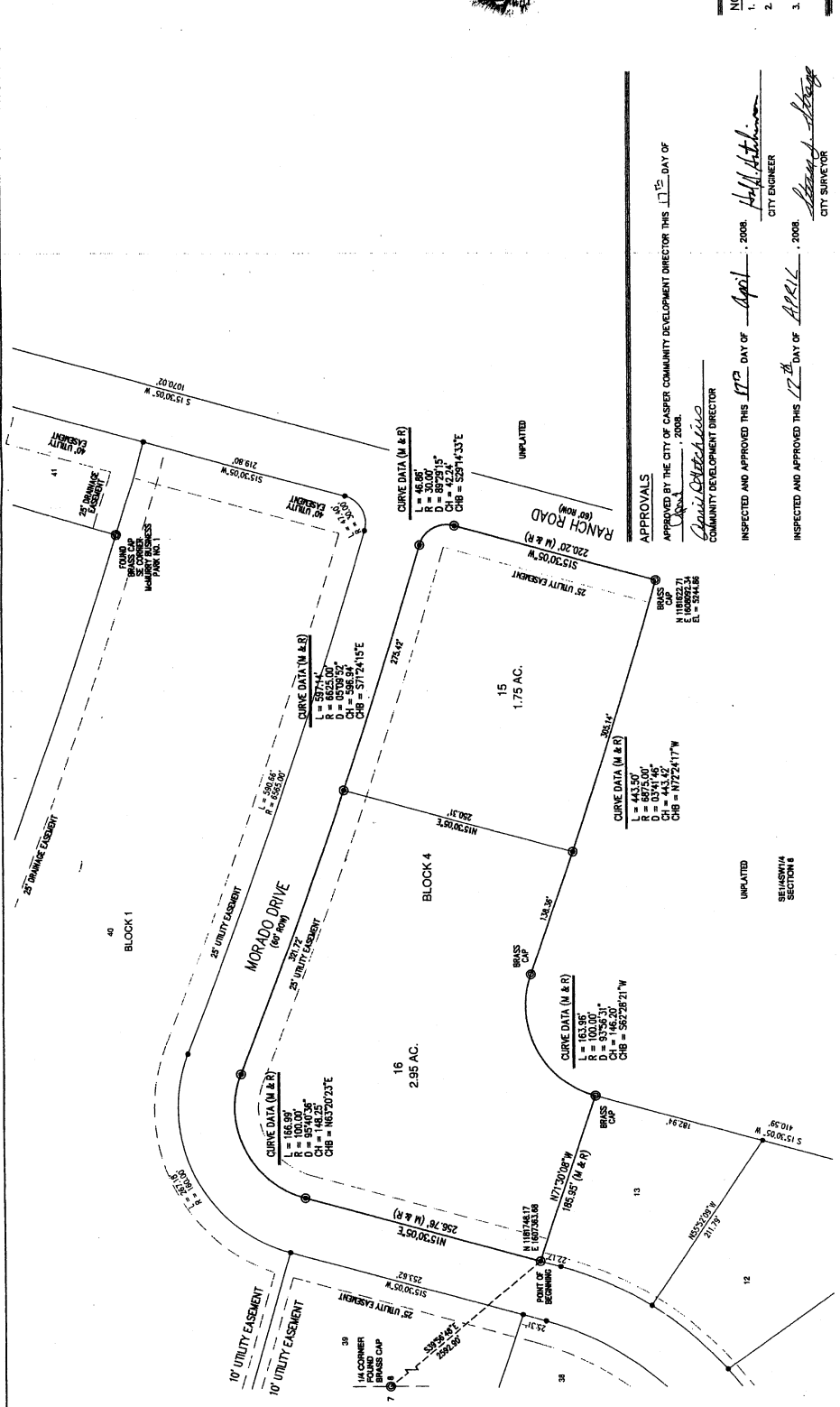
CERTIFICATE OF SURVEYOR
 STATE OF WYOMING
 COUNTY OF NATRONA
 I, WILLIAM R. FEHRINGER, A REGISTERED PROFESSIONAL LAND SURVEYOR, LICENSE NO. 5528, DO HEREBY CERTIFY THAT THIS PLAT WAS MADE FROM NOTES TAKEN DURING AN ACTUAL SURVEY MADE UNDER MY PERSONAL SUPERVISION AND ACCORDING TO THE BEST OF MY KNOWLEDGE AND BELIEF, CORRECTLY AND ACCURATELY REPRESENTS SAID SURVEY. ALL DIMENSIONS ARE EXPRESSED IN FEET AND DECIMALS THEREOF AND COURSES REFERRED TO THE TRUE MERIDIAN. ALL BEING TRUE AND CORRECT TO THE BEST OF MY KNOWLEDGE AND BELIEF.

APPROVED BY THE CITY OF CASPER COMMUNITY DEVELOPMENT DIRECTOR THIS 17TH DAY OF APRIL, 2008.
 APPROVED AND APPROVED THIS 12TH DAY OF APRIL, 2008.
 CITY ENGINEER
 CITY SURVEYOR

INSPECTED AND APPROVED THIS 17TH DAY OF APRIL, 2008.
 INSPECTED AND APPROVED THIS 12TH DAY OF APRIL, 2008.
 CITY ENGINEER
 CITY SURVEYOR

CERTIFICATE OF SURVEYOR
 STATE OF WYOMING
 COUNTY OF NATRONA
 I, WILLIAM R. FEHRINGER, A REGISTERED PROFESSIONAL LAND SURVEYOR, LICENSE NO. 5528, DO HEREBY CERTIFY THAT THIS PLAT WAS MADE FROM NOTES TAKEN DURING AN ACTUAL SURVEY MADE UNDER MY PERSONAL SUPERVISION AND ACCORDING TO THE BEST OF MY KNOWLEDGE AND BELIEF, CORRECTLY AND ACCURATELY REPRESENTS SAID SURVEY. ALL DIMENSIONS ARE EXPRESSED IN FEET AND DECIMALS THEREOF AND COURSES REFERRED TO THE TRUE MERIDIAN. ALL BEING TRUE AND CORRECT TO THE BEST OF MY KNOWLEDGE AND BELIEF.

APPROVED BY THE CITY OF CASPER COMMUNITY DEVELOPMENT DIRECTOR THIS 17TH DAY OF APRIL, 2008.
 APPROVED AND APPROVED THIS 12TH DAY OF APRIL, 2008.
 CITY ENGINEER
 CITY SURVEYOR



C.E.P.I.
 Civil Engineering Professionals, Inc.
 600 Broadway Blvd., Casper, Wyoming 82401
 (307) 244-5444 • (307) 244-5100 Fax

LEGEND
 SET BRASS CAP
 SET MONUMENT 5/8" REBAR & ALUMINUM CAP
 FOUND MONUMENT AS NOTED

SCALE: 1" = 60'

NOTES
 1. ERROR OF CLOSURE EXCEEDS 1:1,486,885.
 2. WASH. SEC. BEARINGS IS THE WYOMING STATE PLANE COORDINATE SYSTEM, EAST CENTRAL ZONE, NAD 1983/86.
 3. COMBINATION SCALE FACTOR IS 0.987786.

RECORDED
 FILED FOR RECORD IN THE OFFICE OF THE COUNTY CLERK OF NATRONA COUNTY, WYOMING THIS 17TH DAY OF APRIL, 2008.
 INSTRUMENT NO. 841827
 COUNTY CLERK
 January 5, 2011