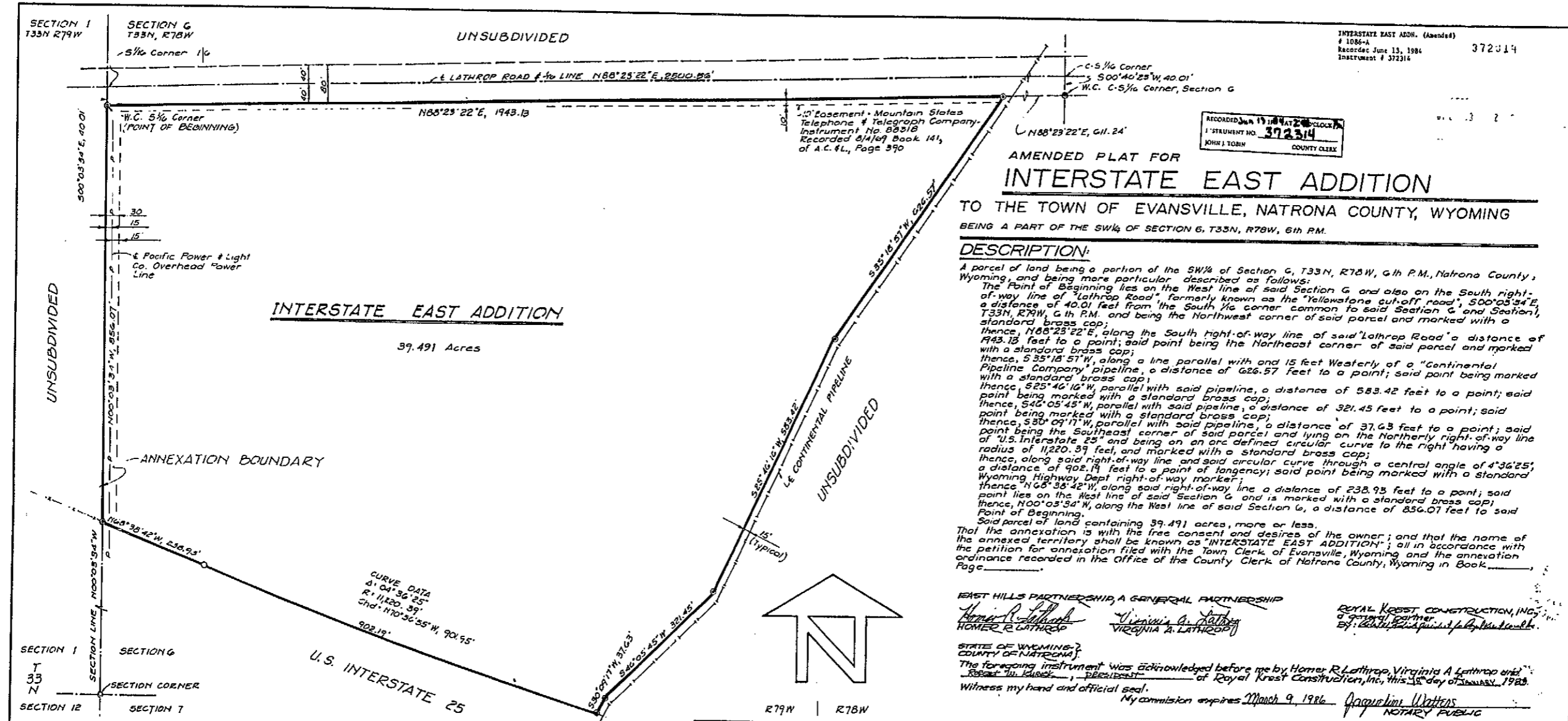


372314

#1086-A



INTERSTATE EAST ADD. (Amended)
1086-A
Recorded June 13, 1984
Instrument # 372314

RECORDED JUN 13 1984 AT 2:00 CLOCK
INSTRUMENT NO. 372314
JOHN J. TOBIN COUNTY CLERK

AMENDED PLAT FOR
INTERSTATE EAST ADDITION

TO THE TOWN OF EVANSVILLE, NATRONA COUNTY, WYOMING
BEING A PART OF THE SW 1/4 OF SECTION 6, T33N, R78W, 6th P.M.

DESCRIPTION:

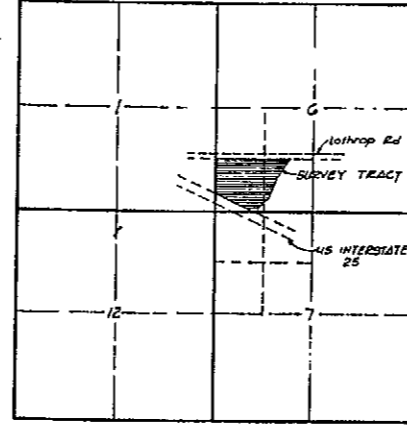
A parcel of land being a portion of the SW 1/4 of Section 6, T33N, R78W, 6th P.M., Natrona County, Wyoming, and being more particular described as follows:
The Point of Beginning lies on the West line of said Section 6 and also on the South right-of-way line of "Lathrop Road" formerly known as the "Yellowstone cut-off road", 500°05'34"E, a distance of 40.01 feet from the South 1/4 corner common to said Section 6 and Section 1, T33N, R79W, 6th P.M. and being the Northwest corner of said parcel and marked with a standard brass cap;
thence, N88°23'22"E, along the South right-of-way line of said "Lathrop Road" a distance of 1943.13 feet to a point; said point being the Northeast corner of said parcel and marked with a standard brass cap;
thence, S35°18'51"W, along a line parallel with and 15 feet Westerly of a "Continental Pipeline Company" pipeline, a distance of 626.57 feet to a point; said point being marked with a standard brass cap;
thence, S25°46'12"W, parallel with said pipeline, a distance of 583.42 feet to a point; said point being marked with a standard brass cap;
thence, S42°05'45"W, parallel with said pipeline, a distance of 321.45 feet to a point; said point being marked with a standard brass cap;
thence, S30°09'11"W, parallel with said pipeline, a distance of 37.63 feet to a point; said point being the Southeast corner of said parcel and lying on the Northernly right-of-way line of "U.S. Interstate 25" and being on an arc defined circular curve to the right having a radius of 11,220.39 feet, and marked with a standard brass cap;
thence, along said right-of-way line and said circular curve through a central angle of 4°36'25", a distance of 902.19 feet to a point of tangency; said point being marked with a standard Wyoming Highway Dept right-of-way marker;
thence, N65°35'42"W, along said right-of-way line a distance of 238.93 feet to a point; said point lies on the West line of said Section 6 and is marked with a standard brass cap;
thence, N00°03'34"W, along the West line of said Section 6, a distance of 856.07 feet to said Point of Beginning.
Said parcel of land containing 39.491 acres, more or less.
That the annexation is with the free consent and desires of the owner; and that the name of the annexed territory shall be known as "INTERSTATE EAST ADDITION"; all in accordance with the petition for annexation filed with the Town Clerk of Evansville, Wyoming and the annexation ordinance recorded in the Office of the County Clerk of Natrona County, Wyoming in Book _____ Page _____.

EAST HILLS PARTNERSHIP, A GENERAL PARTNERSHIP
Homer R. Lathrop
Virginia A. Lathrop
ROYAL KREST CONSTRUCTION, INC.
By: Robert W. Kusch, President
Witness my hand and official seal.
My commission expires March 9, 1986
Jacqueline Watters
NOTARY PUBLIC

PLATTED BOUNDARY SURVEY NOTES

SCALE: 0 50 100 200 400
APPROVED BY THE BOARD OF COUNTY COMMISSIONERS OF NATRONA COUNTY, WYOMING, BY RESOLUTION PASSED ON THE 5 DAY OF June, 1984.
ATTEST: *John J. Tobin* COUNTY CLERK
APPROVED THIS 4 DAY OF June, 1984.
W. J. ... COUNTY SURVEYOR
RECORDED ON THIS 13th DAY OF June, 1984.
John J. Tobin COUNTY CLERK (NATRONA COUNTY)

LEGEND:
●...Found Brass Cap (Worthington, Lenthart Carpenter)
○...Found R/W Marker (Wyoming Highway Dept.)
○...Set Brass Cap
Bearing reference: Wyoming State Plane Coordinate System (East Central Zone) Rotated to Geodetic.
PLAT PREPARED BY:
WESTERN ENGINEERS-ARCHITECTS, INC.
501 NO. SUN DRIVE, CASPER, WYOMING



VICINITY MAP
SCALE: 0 1000 2000 4000

CERTIFICATE OF SURVEYOR:

STATE OF WYOMING
COUNTY OF NATRONA
I, Duane Fehringer, of Casper, Wyoming, hereby certify that this map was made from notes taken during an actual survey made by me or under my direction during February, 1981 and that it correctly and accurately represents said survey, and that the error of closure exceeds 1:10,000.
Duane Fehringer
Duane Fehringer, P.E. & L.S. Wyo. Lic. No. 2056
The foregoing instrument was acknowledged before me by Duane Fehringer this 21st day of September, 1982.
Witness my hand and official seal.
My Commission Expires April 23, 1985
Caleb P. Runk
Notary Public

APPROVALS:

Approved by the Town of Evansville, Wyoming Director of Growth Management Planning this 5th day of July, 1984.
Ad M. Meek Director
Approved by the Town Council of the Town of Evansville, Wyoming by ordinance No. 1-33 this 11th day of July, 1983.
Attest: *Raymond Hill* Town Clerk
Approved by the Town Engineer of the Town of Evansville, Wyoming this 1st day of June, 1984.
John H. ... Engineer