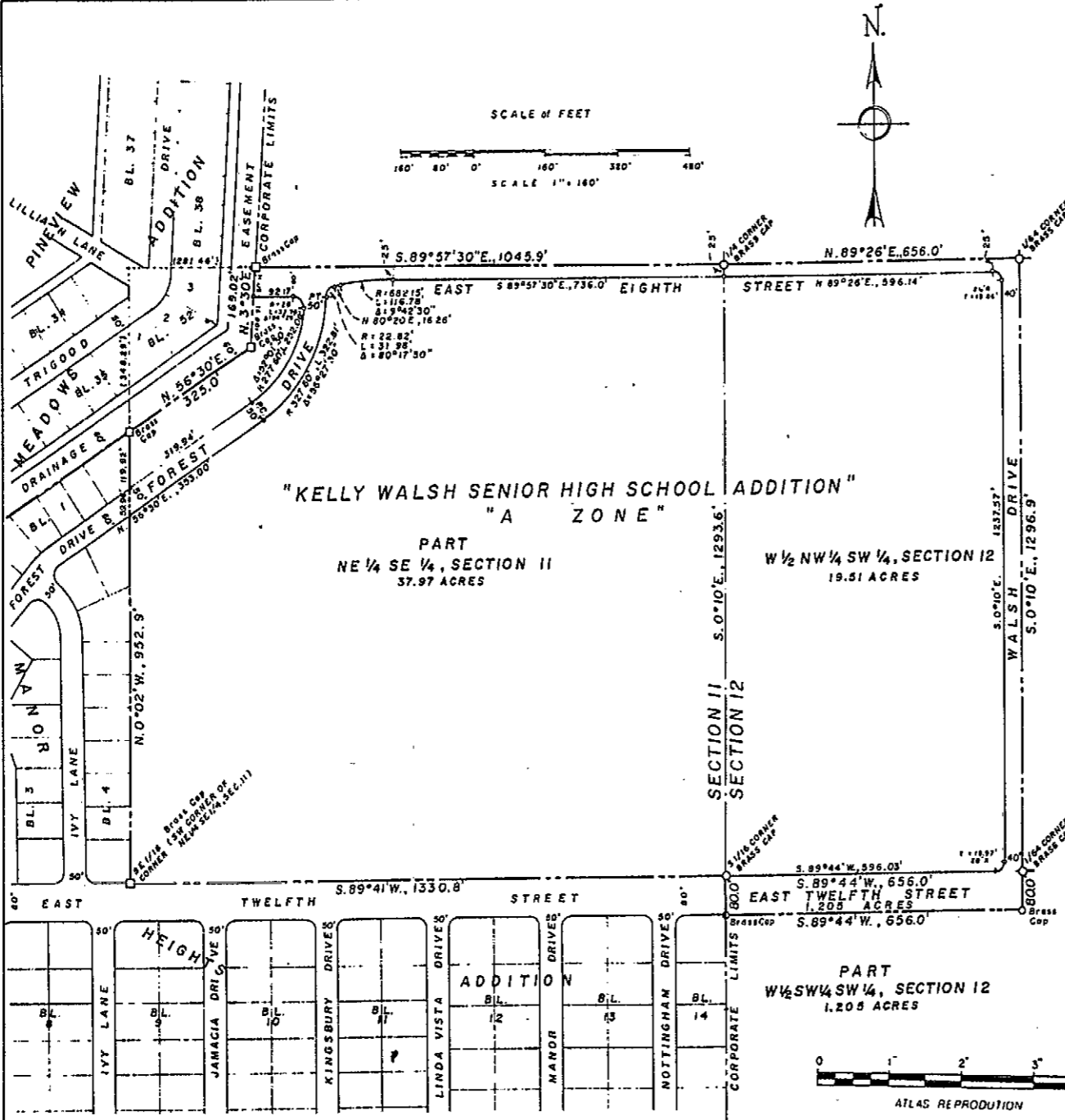


241/490

1130



PLAT  
**KELLY WALSH  
 SENIOR HIGH SCHOOL ADDITION**

TO THE CITY OF CASPER,  
 NATRONA COUNTY, WYOMING.  
 BEING PARTS OF:  
 THE NE 1/4 SE 1/4, SECTION 11 & W 1/2 W 1/2 SW 1/4, SECTION 12  
 T.33N., R.79W. of 6th PRINCIPAL MERIDIAN.

CERTIFICATE OF DEDICATION

Natrona County High School, State of Wyoming, a Body Corporate does hereby certify that the foregoing parts of the NE 1/4 SE 1/4 of Section 11 and the W 1/2 W 1/2 SW 1/4 of Section 12, all in T.33N., R.79W. of the 6th Principal Meridian, Natrona County, Wyoming as shown on this plat is with the free consent and in accordance with our desires, the undersigned owners and proprietors of said lands, that the said parts of the NE 1/4 SE 1/4 of Section 11 and the W 1/2 W 1/2 SW 1/4 of Section 12, shall be named and designated "KELLY WALSH SENIOR HIGH SCHOOL ADDITION TO THE CITY OF CASPER, NATRONA COUNTY, WYOMING". All Streets and Publicways so designated are hereby dedicated to the Public.

A Metes and Bounds Description of said "KELLY WALSH SENIOR HIGH SCHOOL ADDITION TO THE CITY OF CASPER" follows:  
 Beginning at the southwesterly corner of said NE 1/4 SE 1/4, Section 11, which corner also marks an angle point in north and easterly lines of Manor Heights Addition to said City of Casper and is the southeast corner of Block 4 thereof; Thence from said point of beginning, N.0°02'W., 952.9 feet along the westerly line of said NE 1/4 SE 1/4, Section 11, and the easterly line of said Block 4 and also Block 2 of Manor Heights Addition, to a point on the southeasterly line of Pineview Meadows Addition to said City of Casper; Thence N.56°30'E., 325.0 feet along the easterly line of said Pineview Meadows Addition to an angle point; Thence along said Addition line N.3°30'E., 169.02 feet to a point on the north line of said NE 1/4 SE 1/4, Section 11; Thence S.83°57'30"E., 1045.9 feet along the north line of said NE 1/4 SE 1/4, Section 11 to the northeast corner thereof, which corner also marks the northwest corner of the foregoing W 1/2 W 1/2 SW 1/4, Section 12; Thence N.89°26'E., 656.0 feet along the north line of W 1/2 W 1/2 SW 1/4 of Section 12 to the northeasterly corner thereof; Thence S.0°10'E., 1376.9 feet along the easterly line of said W 1/2 W 1/2 SW 1/4 to its intersection with the easterly extension of the southerly line of East Twelfth Street of said Manor Heights Addition; Thence S.89°44'W., 656.0 feet along said Street line to a point; Thence N.0°10'W., 800 feet to the southeast corner of the foregoing NE 1/4 SE 1/4, Section 11, also the northeasterly corner of said Manor Heights Addition; Thence S.89°41'W., 1330.8 feet along the southerly line of said NE 1/4 SE 1/4, Section 11 and the north line of East Twelfth Street in said Manor Heights Addition, to the southwest corner of said NE 1/4 SE 1/4, Section 11 and the point of beginning and containing a total area of 58.685 acres as set forth by this plat.

NATRONA COUNTY HIGH SCHOOL, STATE OF WYOMING, A Body Corporate:  
 Attest: *[Signature]* SECRETARY  
*[Signature]* PRESIDENT, BOARD OF TRUSTEES.

STATE OF WYOMING  
 COUNTY OF NATRONA  
 On this 31 day of August, 1962, before me personally appeared *W. Earl* and *Mary K. West*, President and Secretary respectively of Natrona County High School, State of Wyoming, a Body Corporate, and to me personally known and who executed the foregoing instrument and acknowledged that they executed the same in accordance with a Resolution of the Board of Trustees and as the free act and deed of said Board of Trustees, and did affix hereto the seal of said Body Corporate.

Given under my hand and notarial seal this 31 day of August, 1962.  
*Georgie D. Adams* NOTARY PUBLIC  
 My Commission expires on the 16 day of April, 1963.

PLAT APPROVED  
 CITY COUNCIL, City of Casper, Wyoming.  
 By Ordinance No. 1424-A, duly passed, adopted and approved on the 27 day of August, 1962.  
*[Signature]* MAYOR  
 BOARD OF COUNTY COMMISSIONERS, Natrona County, Wyoming: By Resolution duly passed on the . . . day of . . . 1962.  
*[Signature]* CHAIRMAN OF THE BOARD

Attest: *[Signature]* CITY CLERK  
 Inspected and Approved: *[Signature]* CITY ENGINEER  
 Inspected and Approved: *[Signature]* COUNTY SURVEYOR

CERTIFICATE OF SURVEYOR  
 STATE OF WYOMING  
 COUNTY OF NATRONA  
 I, E.C. Lenhart of Casper, Wyoming do hereby certify that this plat was prepared from notes taken during an actual survey made by me during the month of October, 1959 and that such plat correctly represents such survey and the "KELLY WALSH SENIOR HIGH SCHOOL ADDITION TO THE CITY OF CASPER, NATRONA COUNTY, WYOMING", all dimensions are expressed in feet and decimals thereof and all courses referred to the true meridian as determined by direct solar observation; such survey as represented hereon is correct to the best of my knowledge and belief.  
 Wyoming Registration No. 520, P.E. & L.S.  
*E.C. Lenhart*  
 E.C. LENHART  
 Subscribed in my presence and sworn to before me this 2nd day of February, 1962.  
 My Commission expires May 27th, 1965.  
*[Signature]* NOTARY PUBLIC

Plat approved by the COMMUNITY PLANNING COMMISSION of Casper, Wyoming, and forwarded to the City Council of Casper, Wyoming, this 15th day of November, 1962, with recommendation that said plat be approved.  
*[Signature]* CHAIRMAN  
 SECRETARY  
 SURVEY & PLAT BY:  
 WORTHINGTON, LENHART & ASSOCIATES, INC.  
 200 South Lowell Street,  
 Casper, Wyoming.  
 W.O. No. 1-17-A, February 2, 1962  
 July 19, 1962  
 W.O. No. 1-22-A, February 26, 1963