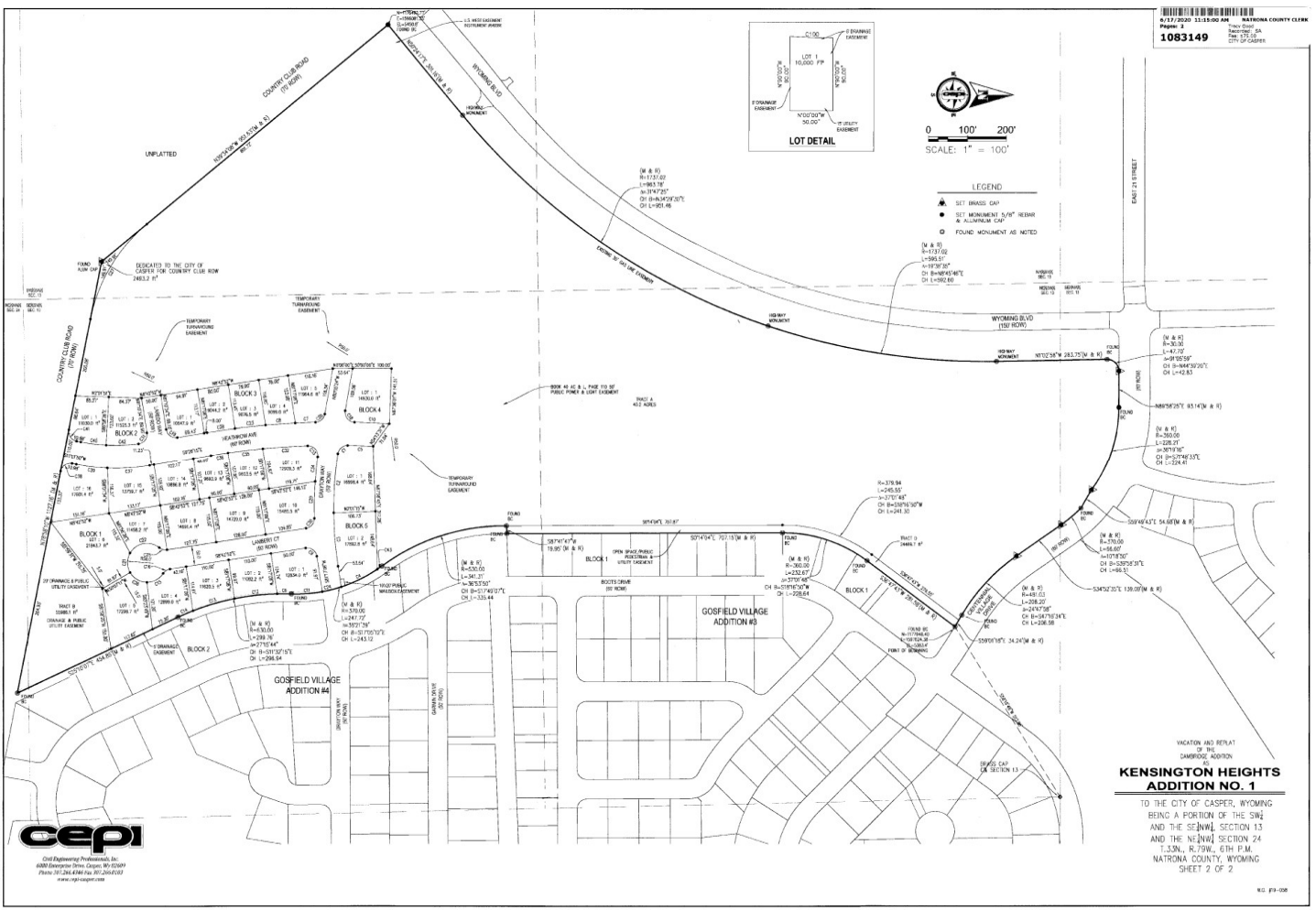


- LEGEND**
- SET BRASS CAP
 - SET MONUMENT 3/4\"/>
 - FOUND MONUMENT AS NOTED



**KENSINGTON HEIGHTS
 ADDITION NO. 1**

TO THE CITY OF CASPER, WYOMING
 BEING A PORTION OF THE SW¹₄
 AND THE SE¹₄ SECTION 13
 AND THE NE¹₄ SECTION 24
 T.33N., R.79W., 6TH P.M.
 NATRONA COUNTY, WYOMING
 SHEET 2 OF 2

