

PLAT OF KEYSTONE ADDITION TO THE CITY OF CASPER,

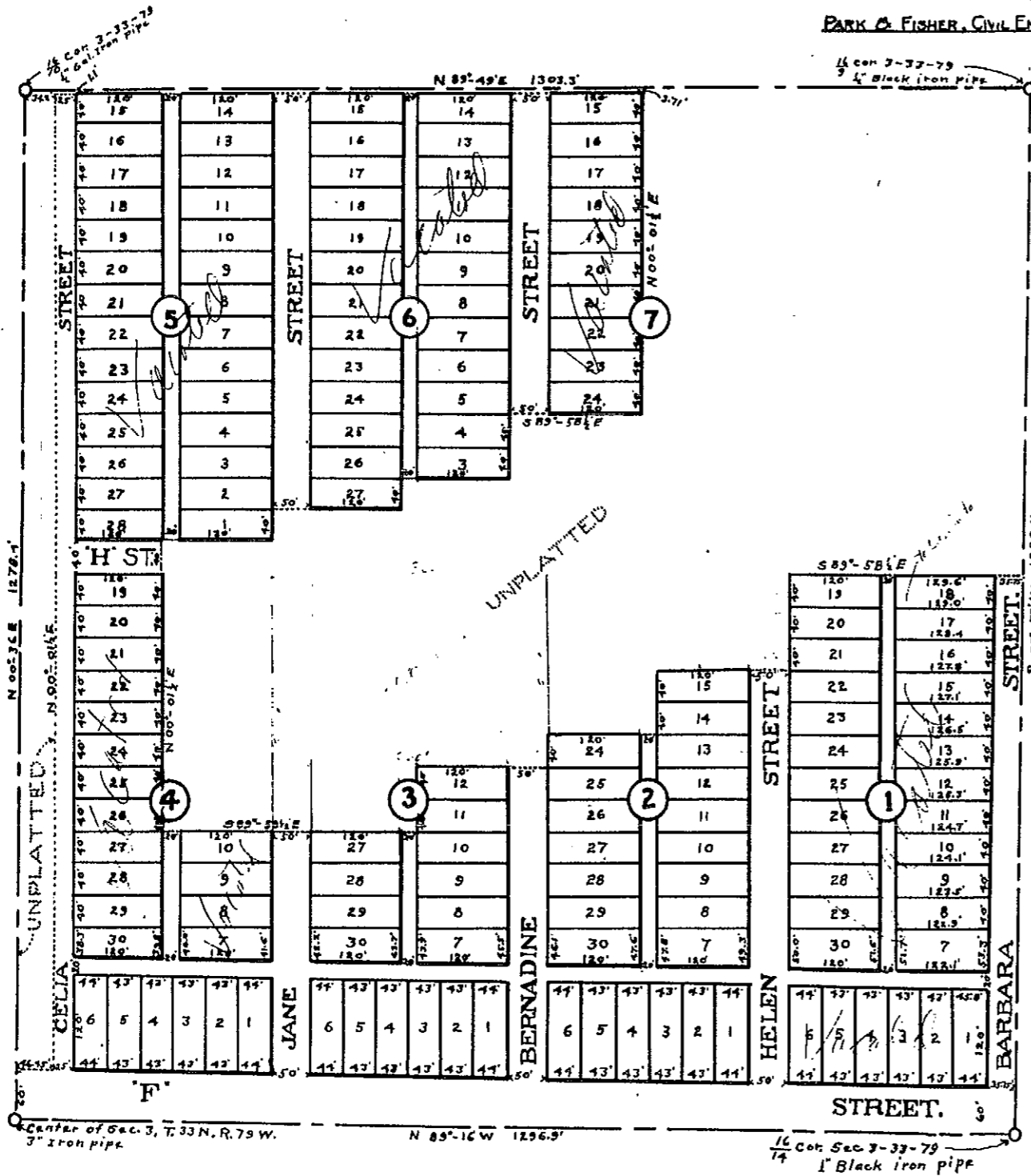
A SUBDIVISION OF A PART OF THE SW 1/4 NE 1/4 OF SEC. 3, T.33N., R.79W.
NATRONA COUNTY, WYOMING.

SCALE: 1 INCH = 100 FEET.

PARK & FISHER, CIVIL ENGINEERS, CASPER, WYOMING.

KEYSTONE ADDITION
Folder 7
118820

STATE OF WYOMING } ss.
County of Natrona }
This instrument was filed for Record
Mar. 5 - 1924
in Book 43 of Records, and duly recorded
in Book 43 of Records, page 201
Alma C. Fisher, County Clerk



DEDICATION:

STATE OF WYOMING } ss.
COUNTY OF NATRONA }
This is to certify that the above named subdivision of a part of the Southwest One-quarter of the Northeast One-quarter (SW 1/4 NE 1/4) of Section three (3), Township Thirty-three North (T.33N), Range Seventy-nine West (R.79W) of the Sixth Principal Meridian (6th P.M.), located in County of Natrona, State of Wyoming, as appears on the annexed plat as Block Number One (1) containing lots numbered one (1) to thirty (30) consecutively both inclusive, Block number two (2) containing lots numbered one (1) to fifteen (15) consecutively both inclusive and lots numbered twenty four (24) to thirty (30) consecutively both inclusive, Block number three (3) containing lots numbered one (1) to twelve (12) consecutively both inclusive and lots numbered thirteen (13) to thirty (30) consecutively both inclusive, Block number four (4) containing lots numbered one (1) to ten (10) consecutively both inclusive and lots numbered eleven (11) to thirty (30) consecutively both inclusive, Block number five (5) containing lots numbered one (1) to twenty eight (28) consecutively both inclusive, Block number six (6) containing lots numbered three (3) to twenty seven (27) consecutively both inclusive and Block number seven (7) containing lots numbered fifteen (15) to twenty four (24) consecutively both inclusive, said subdivision being known as 'KEYSTONE ADDITION TO THE CITY OF CASPER' is with the free consent and in accordance with the desires of the undersigned owner and proprietor, the 'SEE BEN REALTY CO.', a corporation duly organized and existing under and by virtue of the laws of the state of Wyoming.
All streets and alleys shown on the annexed plat are hereby dedicated to the public.
In Witness whereof the said 'SEE BEN REALTY CO.' has caused these presents to be signed in its corporate name by its president, to be attested by its secretary, and its corporate seal to be duly affixed, by authority of its board of directors this 4th day of March AD. 1924.

Witnesses:
A. C. MacIntyre
W. H. Fisher
SEE BEN REALTY CO.,
By: B. L. Scherck, Its President
Attested: Cecil Bon, Its Secretary.

STATE OF WYOMING } ss.
COUNTY OF NATRONA }
On this 4th day of March, AD. 1924, before me appeared B.L. Scherck and Cecil Bon, both to me personally known, who being by me first duly sworn, did depose and say, that they are the president and secretary respectively of the 'SEE BEN REALTY CO.', a Wyoming Corporation; that the seal affixed to the foregoing instrument is the corporate seal of said Corporation; and that the foregoing instrument was signed and sealed in behalf of said Corporation by authority of its board of directors; and the said B.L. Scherck and Cecil Bon acknowledge the said instrument to be the free and voluntary act of said Corporation.

Given under my hand and notarial seal, on the day and year last above mentioned.
My commission expires September 2nd, 1927.
Barbara Rosa, Notary Public.

SURVEYOR'S CERTIFICATE:

STATE OF WYOMING } ss.
COUNTY OF NATRONA }
I, Albert Park, of Casper, Wyoming, hereby certify that the survey and subdivision of 'KEYSTONE ADDITION TO THE CITY OF CASPER', as appears on the annexed plat and comprising a part of the Southwest one-quarter of the Northeast one-quarter (SW 1/4 NE 1/4) of section three (3) township thirty three North (T.33N), Range seventy-nine West (R.79W) of the Sixth Principal Meridian (6th P.M.), situated in Natrona County, State of Wyoming, was made under my direction during the month of November, AD. 1923; at the request of and for the 'SEE BEN REALTY CO.' by B.L. Scherck and Cecil Bon its president and secretary respectively. The survey was executed with surveyor's standard steel tape and transit, each block corner being marked on the ground by a 4\"/>

Surveyor's License No. 14: State of Wyoming.
Albert Park, Surveyor.

STATE OF WYOMING } ss.
COUNTY OF NATRONA }
On this 4th day of March, AD. 1924, before me appeared Albert Park, to me personally known, who being by me first duly sworn did depose and say: That he is a qualified surveyor, duly licensed under the laws of the state of Wyoming; that his bond as provided by law is now in force; and that he signed the foregoing instrument as his free and voluntary act and deed.
Given under my hand and notarial seal, the day and year last above mentioned.
My commission expires September 2nd, 1927.

Barbara Rosa, Notary Public.

Checked and Affirmed by W. H. Fisher, March 4th, 1924.
Deputy County Surveyor.