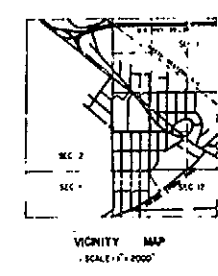
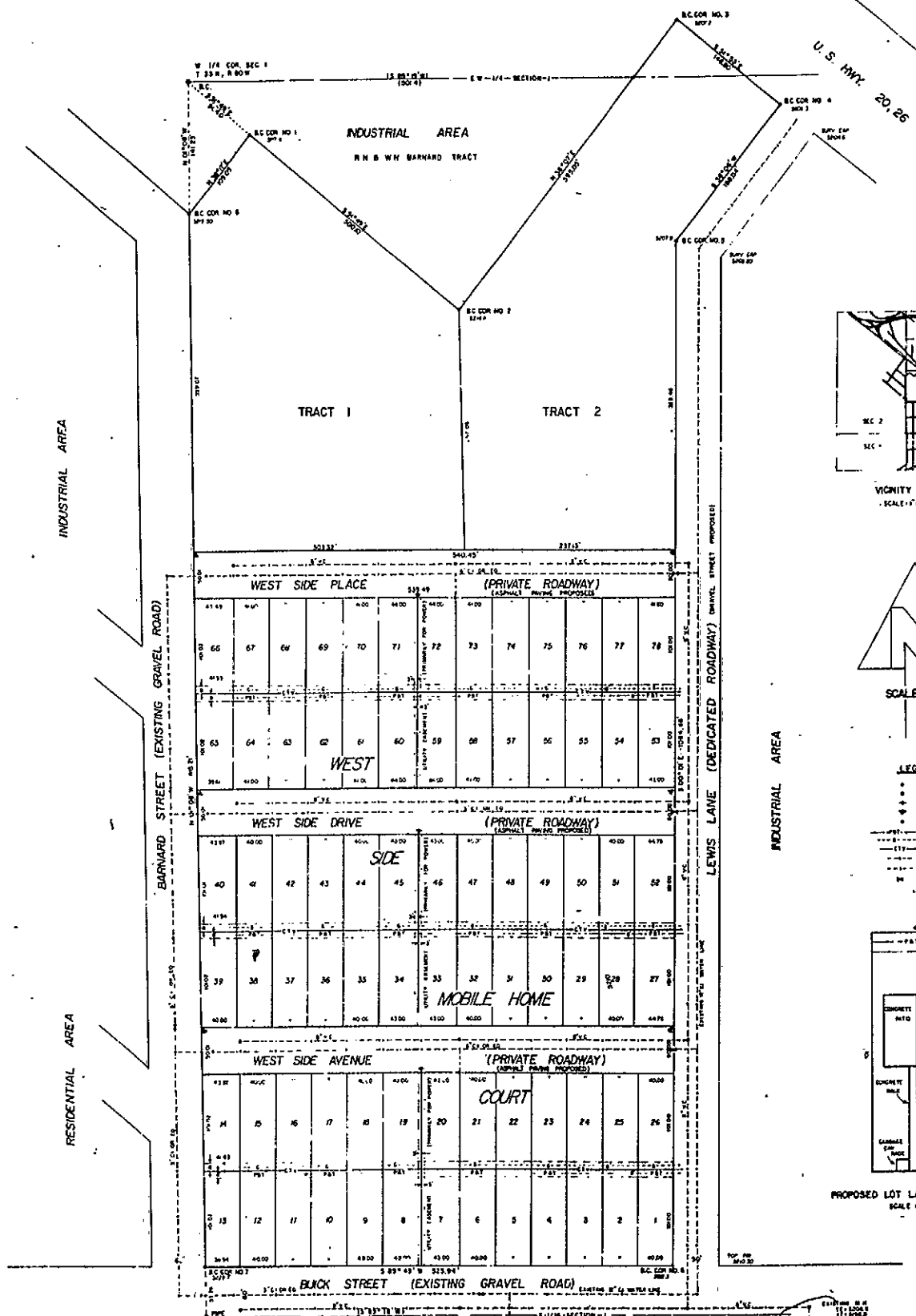
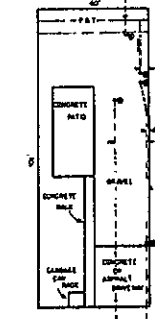


265/123



- LEGEND**
- BRASS CAP
  - SECTION BENCHMARK CORNER
  - FIRE HYDRANT
  - STREET LIGHT
  - SPOULE
  - POWER & TELEPHONE
  - GAS
  - CITY COMMUNITY TELEPHONE
  - WATER
  - SEWER
  - WATER VALVE



PLAT OF  
**LEWIS SUBDIVISION**  
A SUBDIVISION OF LEWIS TRACT  
BEING A PORTION OF  
THE NW 1/4 SW 1/4 AND THE SW 1/4 NW 1/4  
SECTION 1, T.33N, R.80W 630 PM.  
NATRONA COUNTY, WYOMING

STATE OF WYOMING )  
COUNTY OF NATRONA )  
THIS IS TO CERTIFY THAT THE SUBDIVISION SET OUT BY THIS PLAT TO BE KNOWN AS 'LEWIS SUBDIVISION' AND BEING A PORTION OF THE SOUTH-  
WEST QUARTER OF THE NORTHWEST ONE-FOURTH (SW 1/4) AND THE SOUTHWEST ONE-FOURTH (SW 1/4) OF SECTION 1, TOWNSHIP 33 NORTH, RANGE 80 WEST, SIXTH PRINCIPAL MERIDIAN, NATRONA COUNTY, WYOMING AND BEING MORE PARTICULARLY DE-  
SCRIBED BY METERS AND BOUNDS AS FOLLOWS:

THE POINT OF BEGINNING AND COR. NO. 1 BEING N. 89° 14' 14" W. 41.40 FEET TO THE WEST CORNER OF SAID SECTION 1.  
FROM SAID POINT OF BEGINNING, PROCEED S. 89° 14' 14" W. A DISTANCE OF 300.10 FEET TO COR. NO. 2; THENCE N. 89° 14' 14" E. A DISTANCE OF 341.01 FEET TO COR. NO. 3; ON THE SOUTHWESTERLY BENT-OF-WAY LINE OF U. S. HIGHWAY NO. 20, THENCE S. 89° 14' 14" E. ALONG SAID BENT-OF-WAY LINE A DISTANCE OF 146.80 FEET TO THE POINT OF INTERSECTION WITH THE WESTERLY LINE OF LEWIS LANE AT COR. NO. 4; THENCE S. 89° 14' 14" E. ALONG SAID WESTERLY LINE OF LEWIS LANE A DISTANCE OF 146.80 FEET TO COR. NO. 5; THENCE S. 89° 14' 14" E. AND CONTINUING ALONG SAID WESTERLY LINE OF LEWIS LANE A DISTANCE OF 146.80 FEET TO THE POINT OF INTERSECTION WITH THE NORTH LINE OF BLOCK STREET AT COR. NO. 6; THENCE S. 89° 14' 14" E. ALONG SAID NORTH LINE OF BLOCK STREET A DISTANCE OF 146.80 FEET TO A POINT ON THE WEST LINE OF SAID SECTION 1; THENCE S. 89° 14' 14" E. ALONG SAID WEST LINE OF SECTION 1 A DISTANCE OF 146.80 FEET TO COR. NO. 7; SAID COR. NO. 7 BEING 0.00 FEET, 14.30 FEET FROM THE SW CORNER OF SAID SECTION 1; THENCE N. 89° 14' 14" E. ALONG THE SAID WEST LINE OF SECTION 1 A DISTANCE OF 146.80 FEET TO COR. NO. 8; SAID COR. NO. 8 BEING 0.00 FEET, 14.30 FEET FROM SAID SW CORNER OF SECTION 1; THENCE S. 89° 14' 14" E. A DISTANCE OF 146.80 FEET TO THE POINT OF BEGINNING AND CONTINUING S. 89° 14' 14" E. 14.30 FEET TO COR. NO. 9; THENCE N. 89° 14' 14" E. A DISTANCE OF 146.80 FEET TO THE POINT OF BEGINNING.

IN WITNESS WHEREOF I HAVE HEREUNTO SET MY HAND AND SEAL OF OFFICE AT NATRONA, WYOMING, THIS 26th DAY OF MARCH, 1978.

LEWIS PROPERTY  
By *David P. Lewis*  
DAVID P. LEWIS, GENERAL PARTNER  
COUNTY OF NATRONA  
THE FOREGOING INSTRUMENT WAS ACKNOWLEDGED BEFORE ME BY DAVID P. LEWIS, THE GENERAL PARTNER OF LEWIS PROPERTY, THIS 26th DAY OF MARCH, 1978.

WITNESS MY HAND AND OFFICIAL SEAL.  
MY COMMISSION EXPIRES *March 26, 1978*.

STATE OF WYOMING )  
COUNTY OF NATRONA )  
I, Frank Conroy, a Professional Engineer and Land Surveyor of Wyoming, being duly sworn, depose and certify that this plat was prepared from a field survey of the premises hereon shown and made under my direction during the months of OCTOBER, 1965, APRIL, 1965, AUGUST, 1965, and NOVEMBER, 1972 and said survey is accurately shown thereon. Said plat is true and correct to the best of my knowledge and belief, all bearings referred to in the plat are true, all distances are expressed in feet or decimal thereof, all corner monuments placed upon a surveyation, in accordance with the subdivision regulations of Natrona County.

Wyoming Registration No. 447  
Professional Engineer and Land Surveyor  
*Frank Conroy*  
FRANK CONROY

APPROVED: County Planning and Zoning of Natrona County, *John P. ...* and forward to the Board of County Commissioners of Natrona County, Wyoming with recommendation that said plat be approved.

APPROVED: Board of Commissioners of Natrona County, Wyoming by resolution duly passed on the 28th day of *Feb*, 1978.

Inspected and approved on the *11* day of *Feb*, 1978, Natrona County Health Department, *John P. ...*

Inspected and approved on the *24* day of *Feb*, 1978, *John P. ...*

Inspected and approved on the *24* day of *Feb*, 1978, *John P. ...*

Files for record in the office of the County Clerk of Natrona County, Wyoming.

- NOTES:**
1. Subdivisor's title is per State, Nov 1975.
  2. Survey by "M&E"
  3. Survey by "M&E"
  4. Survey by "M&E"
  5. Survey by "M&E"
  6. Survey by "M&E"
  7. Survey by "M&E"
  8. Survey by "M&E"
  9. Survey by "M&E"
  10. Survey by "M&E"