

#1242

333099

LEGEND: FROM DASH CAP TO POINT NUMBER... LEGEND CLASSIFIED IN TERMS OF COLOR

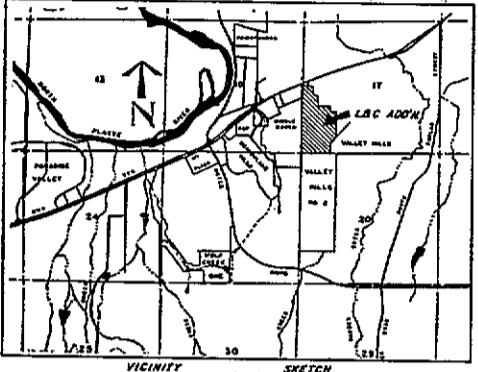
LINE & CURVE ADDITION FILED... RECORD 6/17/21... INSTRUMENT 2/11/20

Plat of LOWER & COOL ADDITION To The City of Casper A Subdivision of portions of vacated RIVERVIEW ADDITION All in the W1/2 of Section 17, T33N, R79W of the Sixth Principal Meridian, Natrona Co., Wyoming

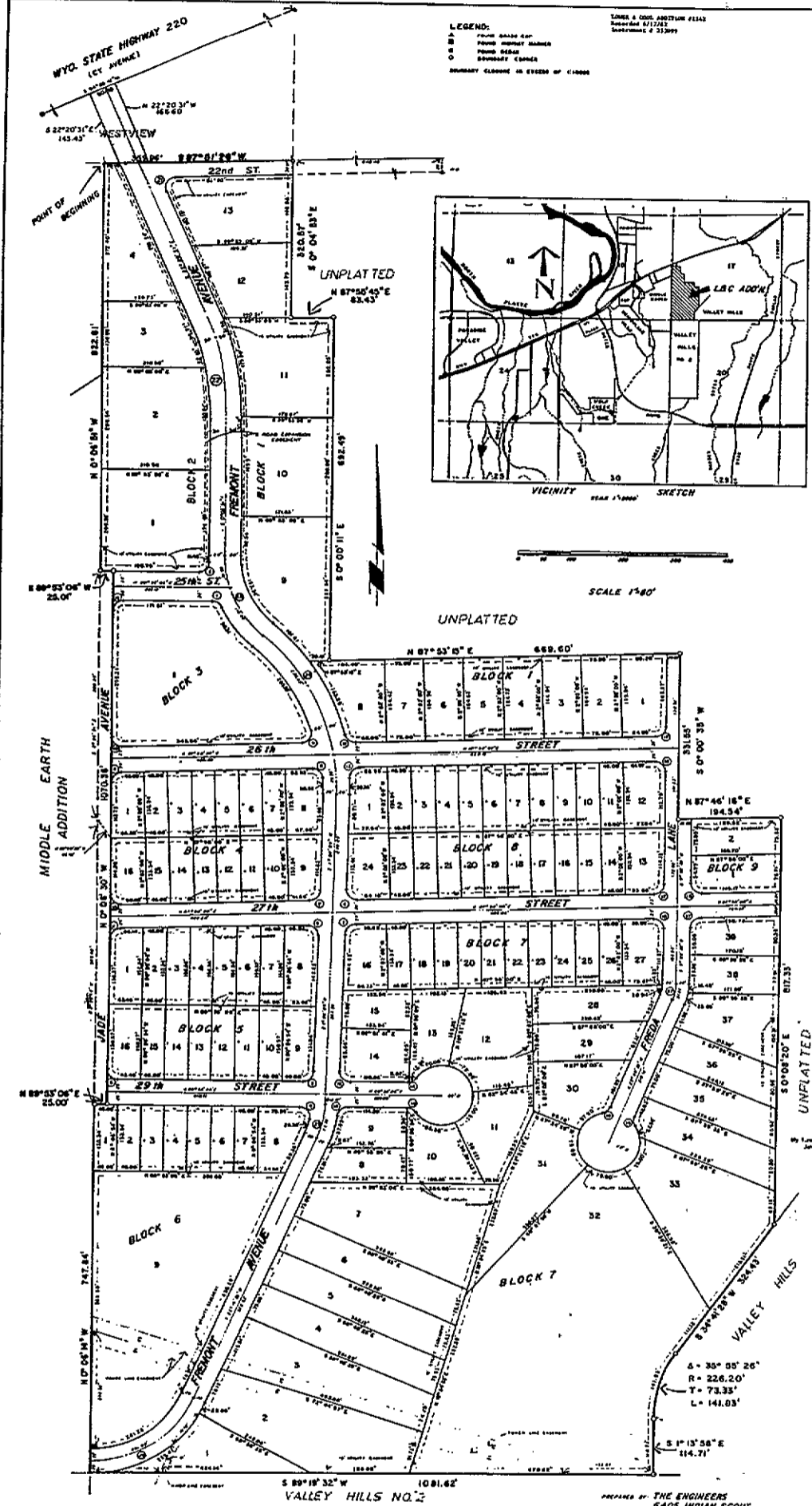
CERTIFICATE OF OWNER

BEFORE ME BY THESE PRESENTS that the undersigned do hereby certify that they are the owners and proprietors of the foregoing addition...

BEARING on the quarter corner between sections 17 and 15; Thence N 82° 51' 21" E along the north line of said SW1/4 of Section 17 said line also being the south line of said WESTVIEW ADDITION a distance of 310.55 feet to a point; Thence S 0° 04' 52" W a distance of 230.57 feet to a point; Thence N 87° 55' 45" E a distance of 83.13 feet to a point; Thence S 0° 06' 13" E a distance of 191.13 feet to a point; Thence N 87° 51' 15" E a distance of 642.66 feet to a point; Thence S 0° 06' 35" W a distance of 331.35 feet to a point; Thence N 87° 48' 14" E a distance of 134.34 feet to the intersection with the east line of SW1/4 of Section 17; Thence S 0° 05' 20" E along said east line of SW1/4 of Section 17 a distance of 817.25 feet to the intersection with the north line of VALLEY HILLS No. 2 said line also being the north line of said SW1/4 of Section 17; Thence S 89° 52' 12" W along said north line of VALLEY HILLS No. 2 said line also being the north line of SW1/4 of Section 17 a distance of 3081.82 feet to the southeast corner of said SW1/4 of Section 17; Thence N 85° 14' 14" W along the west line of said SW1/4 of Section 17 a distance of 282.04 feet to a point; Thence N 89° 53' 48" E a distance of 35.08 feet to a point; Thence S 89° 53' 10" W a distance of 1839.14 feet to a point; Thence S 89° 53' 10" W a distance of 25.01 feet to the intersection with the said west line of the SW1/4 of Section 17; Thence N 89° 53' 10" W along said west line of SW1/4 of Section 17 a distance of 822.86 feet to the POINT OF BEGINNING; CONTAINING 55.48 acres of land more or less subject to any easements, reservations or rights-of-way recorded or so may hereafter be.



SCALE 1"=80'



STATE OF WYOMING

COUNTY OF NATRONA

On this 17th day of March, 1921, before me personally appeared Emma W. Lamer and Bruce W. Cool, to me known to be the persons mentioned in and who executed the foregoing instrument and acknowledged the same to their free will and conscience.

Witness my hand and official seal.

My Commission expires March 17, 1924.



CERTIFICATE OF SURVEY I, Gregory J. Clements, of Casper, Wyoming, do hereby certify that this plat representing a subdivision of a portion of vacated RIVERVIEW ADDITION to the City of Casper...

Witness my hand and official seal.

My Commission expires January 4, 1924.

Approved by the Commonly Planning Commission of Casper, Wyoming, this 17th day of March, 1921, and forwarded to the City Council of Casper, Wyoming, with recommendation that said plat be approved.

Approved by the City Council of the City of Casper, Wyoming, by ordinance No. 4222 duly passed, adopted and approved on the 17th day of March, 1921.

Approved by the Board of County Commissioners of Natrona County, Wyoming, by Resolution duly passed on the 17th day of March, 1921.

Inspected and approved on the 17th day of March, 1921.

Filed for record in the office of Natrona County Clerk this 17th day of March, 1921.

Table with columns: CURVE RETURN TABLE, NO., DELTA, RADIUS, ARC, TAN, NO., DELTA, RADIUS, ARC, TAN. It lists curve data for 24 different curves.

PREPARED BY THE ENGINEERS 6405 INDIAN SCOUT CASPER, WYO. 82601 MARCH 16, 1921