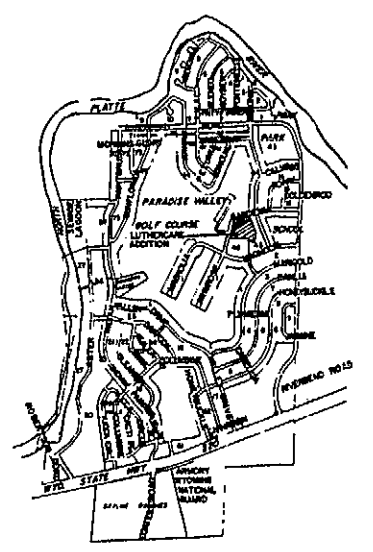
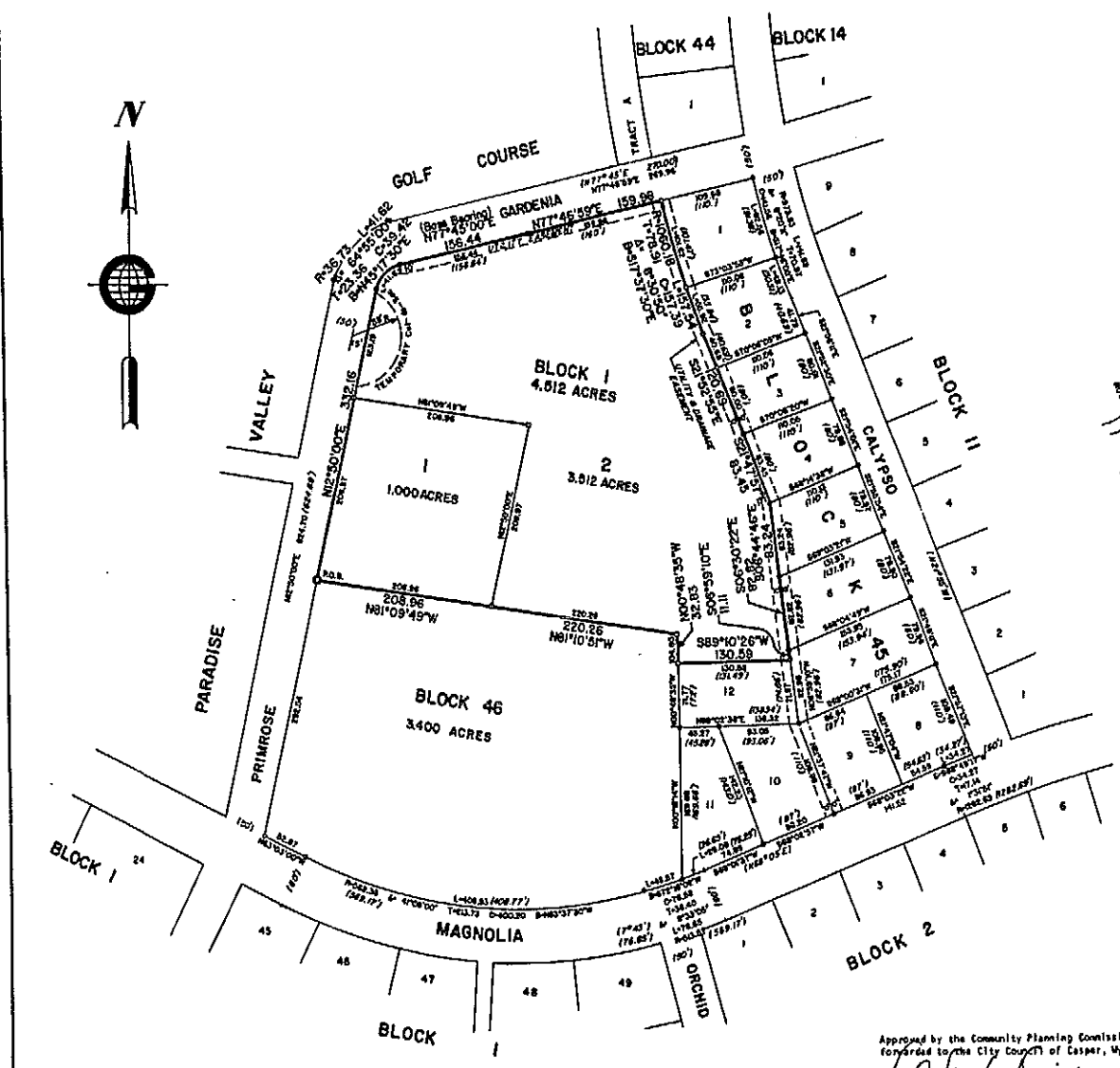


1246

1246



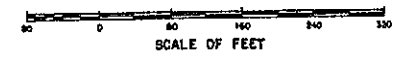
LOCATION MAP

LEGEND

- OD G.E.D.S., Aluminum Cap
- o Aluminum Cap Established in 1977
- Recovered Monument During Execution of Survey in 1977 - Established by Others

(N77°45'E, 270.00') Plat Record Date-Paradise Valley or (196.64)

NOTE: Orchid Street Vacated By Ordinance No. 7-80 February 5, 1980.



APPROVALS

Approved by the Community Planning Commission of Casper, Wyoming, this 14th day of July, 1982, and forwarded to the City Council of Casper, Wyoming, with recommendation that said plat be approved.

L. C. ... Secretary

Approved by the City Council of the City of Casper, Wyoming, by Resolution No. 82-189 duly passed, adopted and approved on the 17th day of August, 1982.

ATTEST: *Calvin ...* City Clerk

Approved by the Board of County Commissioners of Natrona County, Wyoming, by Resolution duly passed on the 21st day of September, 1982.

ATTEST: *...* County Clerk

Inspected and approved on the 13 day of August, 1982

Inspected and approved on the 10th day of September, 1982

Inspected and approved on the 16 day of July, 1982

Filed for record in the Office of the Natrona County Clerk this 4 day of Oct 1982

339316

RECEIVED
 '82 OCT 4 AM 10 02
 COUNTY CLERK, WYO.
 CASPER, WYO.

LUTHERCARE ADDITION #1246
 Instrument #339316
 Recorded-October 4, 1982

PLAT OF
LUTHERCARE ADDITION
 AN ADDITION TO THE CITY OF CASPER
 A SUBDIVISION OF PORTIONS OF
 SE1/4SE1/4 AND SW1/4SE1/4 of SECTION 14, T33N, R60W, of the 6th P.M.
 NATRONA COUNTY, WYOMING
 BEING A REPLAT OF
 LOTS 13 THROUGH 19 INCLUSIVE OF BLOCK 45, A PORTION OF
 BLOCK 46 AND A PORTION OF VACATED ORCHID STREET
 IN
 PARADISE VALLEY SUBDIVISION
 AN ADDITION TO THE CITY OF CASPER
 NATRONA COUNTY, WYOMING
 SCALE: 1" = 80'

CERTIFICATE OF PLATTING

KNOW ALL MEN BY THESE PRESENTS: That Luthercare, Inc., a Wyoming Corporation, do hereby certify that they are the owners and proprietors of the lands included in the foregoing subdivision to be known as "Luthercare Addition" to the City of Casper, Natrona County, Wyoming; that the said lands as set forth by this platting are a replat of Lots 13 through 19 inclusive of Block 45, a Portion of Block 46 and a Portion of Vacated Orchid Street in Paradise Valley Subdivision, an Addition to the City of Casper, Natrona County, Wyoming, more particularly described by metes and bounds as follows:

Beginning at a point in the westerly line of said Block 46, N12°50'00"E a distance of 292.54 feet from the southwesterly corner thereof;

thence, from the Point of Beginning along the westerly line of Block 46, N12°50'00"E a distance of 332.16 feet to the point of curvature of a curve to the right;

thence in a northeasterly direction along the arc of said curve to the right, said curve having a Radius of 36.23 feet, Delta or Central Angle of 64°55'00", an arc distance of 81.62 feet to the point of tangency;

thence along the northerly line of said Block 46, N77°45'00"E (Plat Record and Base Bearing) a distance of 155.44 feet to the intersection of the northerly line of Block 46 with the westerly line of Vacated Orchid Street;

thence across said Vacated Orchid Street and along the northerly line of former Lot 19, Block 45, N77°46'59"E a distance of 159.58 feet to the northeasterly corner of former Lot 19, said point also being the northwesterly corner of Lot 1, Block 45;

thence through Block 45 along the rear lot lines thereof proceed on the arc of a curve to the left, said curve having a Radius of 1869.18 feet, a Delta or Central Angle of 8°39'50", an arc length of 157.54 feet to the point of tangency;

thence S21°52'55"E a distance of 129.69 feet to the southwesterly corner of Lot 3, Block 45;

thence S21°47'57"E a distance of 89.45 feet to the southwesterly corner of Lot 4, Block 45;

thence S6°44'46"E a distance of 89.24 feet to the southwesterly corner of Lot 5, Block 45;

thence S6°30'22"E a distance of 82.82 feet to the southwesterly corner of Lot 6, Block 45;

thence S6°59'10"E a distance of 11.11 feet to the southeasterly corner of former Lot 13, Block 45;

thence along the southerly line of former Lot 13, Block 45, S89°10'26"W a distance of 130.59 feet to the southwesterly corner thereof;

thence along the westerly line of former Lot 13 and easterly line of Vacated Orchid Street, N0°48'35"W a distance of 32.83 feet;

thence across Vacated Orchid Street and into Block 46, N81°10'51"W a distance of 220.26 feet to a point in said Block 46;

thence N81°09'49"W a distance of 208.96 feet to the point of beginning.

Enclosing an area of 4.512 acres more or less.

and as appears on this plat the foregoing subdivision is with the free consent and in accordance with the desires of the undersigned owners and proprietors of said lands; that all streets, public ways and easements shown hereon have been dedicated to the use of the public by the previous platting of March 30, 1961.

Dated at Casper, Wyoming this 14th day of June, 1982.

ATTEST: *T.V. Rindel* Secretary
 LUTHERCARE, INC., A WYOMING CORPORATION
Ralph Hagen President

ACKNOWLEDGMENT

STATE OF WYOMING)
 COUNTY OF NATRONA)
 The foregoing instrument was acknowledged before me by Ralph Hagen and T.V. Rindel this 14th day of June, 1982.

Witness my hand and official seal.

My commission expires: August 4, 1982

CERTIFICATE OF SURVEYOR

STATE OF WYOMING)
 COUNTY OF NATRONA)

I, C. L. Bowdell of Casper, Wyoming do hereby certify that this plat was prepared from notes taken during actual surveys made by me and others under my direction between May 16, 1977 and July 30, 1977 of the perimeters of Block 46 and the perimeters and interiors of Block 45; that this plat correctly represents the results of said surveys and the foregoing "Luthercare Addition" a subdivision of Natrona County, Wyoming that all boundaries and lots are well and accurately marked and identified; that all dimensions are expressed in feet and decimals thereof and all courses referred to the true meridian; that the field closure of said surveys are in excess of 1:100000. All being true and correct to the best of my knowledge and belief.

Wyoming Registration No. 522, Land Surveyor
C. L. Bowdell
 C. L. Bowdell, Surveyor

The foregoing instrument was acknowledged before me by C. L. Bowdell, this 14th day of June, 1982.

Witness my hand and official seal.

My commission expires: August 4, 1982

C. L. Bowdell
 Notary Public

PLANNING, PLAT & SURVEY BY
GLOBAL ENGINEERING & LAND SURVEYING, INC.
 Number 2 English Drive - P.O. Box 532 Casper, Wyoming
 160 South Cache Jackson, Wyoming
 Job Number 8822-4882

June 4, 1982

OWNER/SUBDIVIDER
LUTHERCARE, INC.
 60 Magnolia
 Casper, Wyoming

