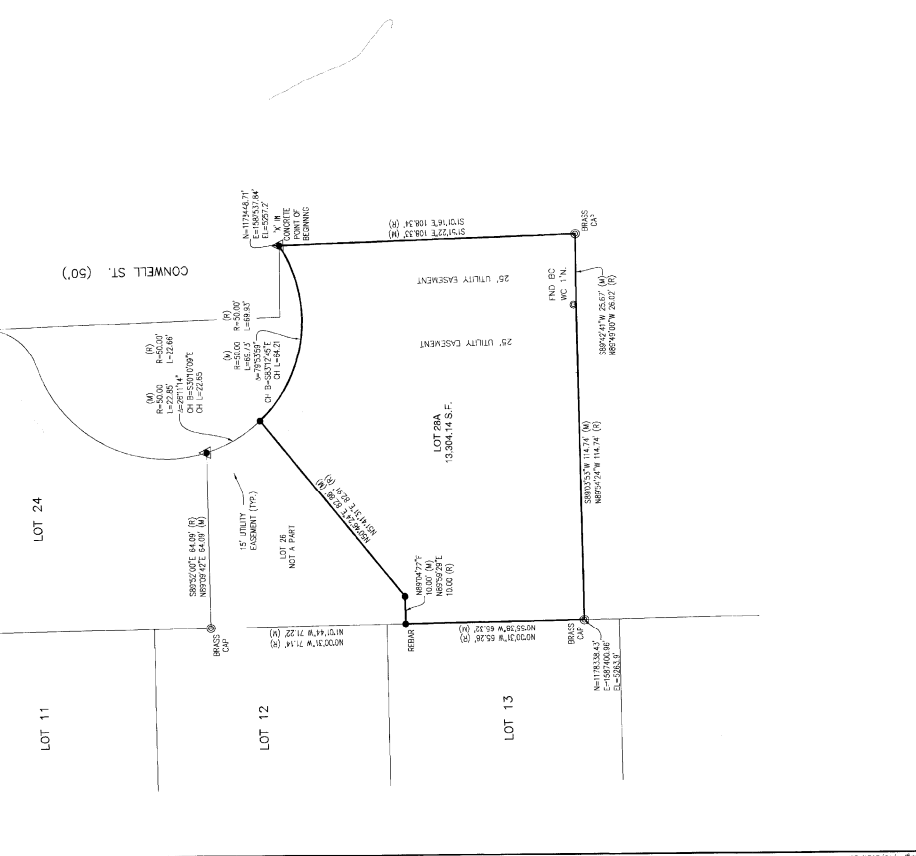
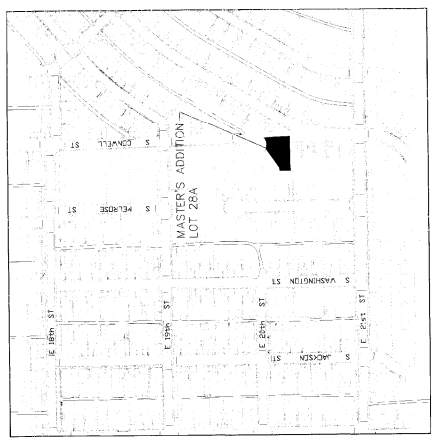


MATRONA COUNTY CLERK
4729 1/231 3:02:07 PM
MATRONA COUNTY CLERK
1102723

CERTIFICATE OF DEDICATION

STATE OF WYOMING
COUNTY OF NATRONA
CITY OF CASPER



VICINITY MAP
NO SCALE

APPROVALS
APPROVED BY THE CITY OF CASPER COMMUNITY DEVELOPMENT DIRECTOR ON THE 15th DAY OF APRIL 2021.
L.S. Becker
COMMUNITY DEVELOPMENT DIRECTOR

INSPECTED AND APPROVED THIS 15th DAY OF APRIL 2021.
GUY A. DACUS - Mayor
CITY ENGINEER

- NOTES
- 1. ERROR OF CLOSURE EXCEEDS 1:4000.
 - 2. BASIS OF BEARING IS THE WYOMING STATE PLANE COORDINATE SYSTEM, EAST CENTRAL ZONE, NAD 83, UTM ZONE 18Q1, 2011.
 - 3. THE COMBENSIVE ANGLE AT THE POINT OF BEGINNING IS 50°41'50.86" AND THE COMBINED FACTOR IS 15,039,977,779.
 - 4. DISTANCES U.S. SURVEY FOOT.
 - 5. BEARINGS SHOWN HEREON ARE BASED ON MAG. BR. THEM AND ARE NOT MEANT TO USED AS BENCHMARKS.

CERTIFICATE OF SURVEYOR

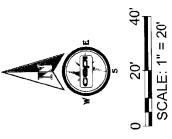
STATE OF WYOMING
COUNTY OF NATRONA
I, JAMES A. STER, a Licensed Professional Land Surveyor in good standing with the Board of Land Surveyors and Engineers of the State of Wyoming, do hereby certify that this plat was made from notes taken during an actual survey made under my direct supervision in March 2021, and that this plat is a true and correct copy of the original field notes and computations and that I have no knowledge or belief that any person has access to or has had access to the field notes, all being true and correct to the best of my knowledge and belief.

MINOR BOUNDARY ADJUSTMENT OF LOTS 27 & 28
MATTERS ADDITION, LOT 26, 27 & 28

TO THE CITY OF CASPER, WYOMING
DESIGNATED AS LOT 28A
BEING A PORTION OF THE
SW1/4 OF SECTION 8
T.33N., R.76W., 6TH P.M.
NATRONA COUNTY, WYOMING



SEAL AND SIGNATURE OF SURVEYOR
JAMES A. STER
Surveyor



- LEGEND
- SET BRASS CAP
 - ALUMINUM CAP
 - FOUND MONUMENT AS NOTED

