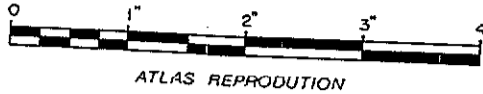


47/242

Pocket 8
Folder 2

McBURNNEY AND McCLARREN'S
RE-SUBDIVISION



ATLAS REPRODUCTION

142442

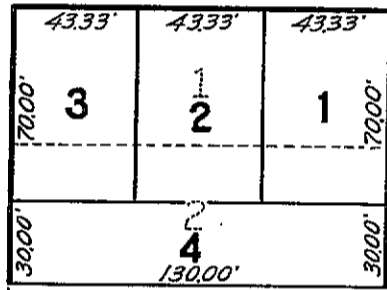
STATE OF WYOMING,) ss.
County of Natrona)
This instrument was filed for record
March 31, 1925
at 10:28 o'clock A.M. and duly recorded
in Book 51 of Records on page 242
County Clerk

McBURNNEY'S & McCLARREN'S RE-SUBDIVISION OF LOTS ONE AND TWO IN BLOCK ONE HUNDRED FIFTY-SIX, IN THE CITY OF CASPER, NATRONA COUNTY WYOMING.

Scale 1 inch = 40 feet.

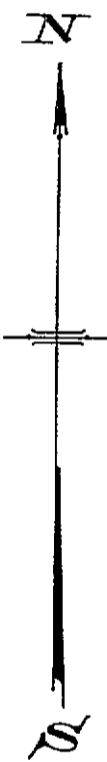
WEST TWELFTH ST.

SOUTH WILLOW ST.



156

SOUTH BOXELDER ST.



WEST THIRTEENTH ST.

STATE OF WYOMING,)
COUNTY OF NATRONA.) ss.

I, Marion N. Wheeler of Natrona County, Wyoming,
a duly licensed Engineer in the State of Wyoming, being first duly sworn,
upon my oath do depose and say:-

That the survey of the Re-subdivision of Lots Number One, (1), and Two, (2), in
Block One Hundred Fifty-Six, (156), in the City of Casper Natrona
County, Wyoming, was made by W.C. Newell under my supervision
and direction and for whose work I stand personally responsible at the request
of Jackson A. McBurney and Plato S. McClarren, owners and proprietors
of said Lots.

That said Lots Number One, (1), and Two, (2), was subdivided into Lots Numbering
from 1 to 4 both inclusive as shown by this plat which is a true and correct
representation of the survey;

That all Lots are well and accurately marked with 2"x2" tacked hubs.

Marion N. Wheeler
Engineer Licence No. 75

Subscribed and Sworn to before me this 16th day of December, 1924.,

Clare M. Curdy
Notary Public

My commission expires 11th day of September, 1927,

Checked and approved this 30th day
of March A.D. 1925.
Wyo. License No. 101. *Herbert S. Kennedy*
Natrona County Surveyor.



ATLAS REPRODUCTION

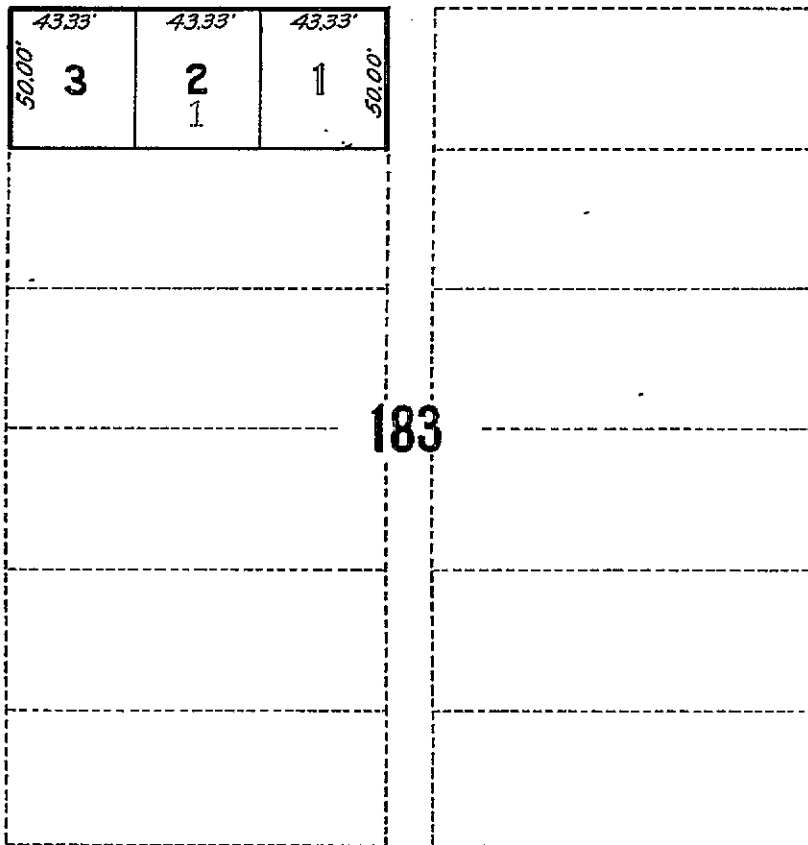
Pocket 8
Folder 2

McBURNLEY AND McCLARREN'S
RE-SUBDIVISION

McBURNLEY'S & McCLARREN'S RE-SUBDIVISION OF LOT ONE IN BLOCK ONE HUNDRED EIGHTY THREE, IN THE CITY OF CASPER, NATRONA COUNTY, WYOMING.

Scale 1 inch = 40 feet

WEST THIRTEENTH ST.



WEST FOURTEENTH ST.

142443

STATE OF WYOMING }
 County of Natrona }
 This instrument was filed for Record
 March 31, 1925
 at 10:21 a.m. G. W. and duly recorded
 in Book 111 of Abstracts on page 246
 County Clerk

STATE OF WYOMING,)
COUNTY OF NATRONA,) SS.

I, Marion N. Wheeler of Natrona County, Wyoming,
a duly licensed Engineer in the State of Wyoming, being first duly sworn,
upon my oath do depose and say:-

That the survey of the Re-subdivision of Lot Number One, (1), in
Block One Hundred Eighty Three, (183), in the City of Casper, Natrona
County, Wyoming, was made by W.C. Newell under my supervision
and direction and for whose work I stand personally responsible at the request
of Jackson A. McBurnley and Plato S. McClarren, owners and proprietors
of said Lot.

That said Lot Number One, (1), was subdivided into Lots Numbering
from 1 to 3 both inclusive as shown by this plat which is a true and correct
representation of the survey;

That all Lots are well and accurately marked with 2"x2" tacked hubs.

Marion N. Wheeler
Engineer Licence No. 75

Subscribed and Sworn to before me this 16th day of December, 1924,

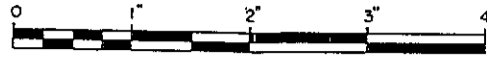
Checked and approved this 30th day
of March A.D. 1925
Wyo. License No. 101. *Arthur B. Kennedy*
Natrona County Surveyor

Grace M. Quady
Notary Public

My commission expires 11th day of September, 1927,

142442

Pocket 8
Folder 2



ATLAS REPRODUCTION

McBURNNEY'S & McCLARREN'S RE-SUBDIVISION OF LOTS ONE AND TWO IN BLOCK ONE HUNDRED FIFTY-SIX, IN THE CITY OF CASPER, NATRONA COUNTY WYOMING.

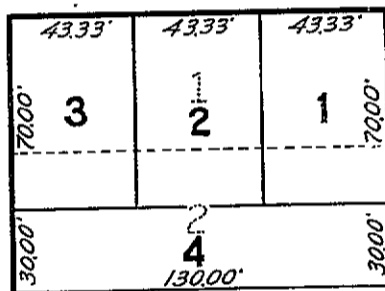
Scale 1 inch = 40 feet.

WEST TWELFTH ST.

ST.

WILLOW

SOUTH



156

ST.

BOXELDER

SOUTH



WEST THIRTEENTH ST.

STATE OF WYOMING,)
COUNTY OF NATRONA.) ss.

I, Marion N. Wheeler of Natrona County, Wyoming,
a duly licensed Engineer in the State of Wyoming, being first duly sworn,
upon my oath do depose and say:-

That the survey of the Re-subdivision of Lots Number One, (1), and Two, (2), in
Block One Hundred Fifty-Six, (156), in the City of Casper Natrona
County, Wyoming, was made by W.C. Newell under my supervision
and direction and for whose work I stand personally responsible at the request
of Jackson A. McBurney and Plato S. McClarren, owners and proprietors
of said Lots.

That said Lots Number One, (1), and Two, (2), was subdivided into Lots Numbering
from 1 to 4 both inclusive as shown by this plat which is a true and correct
representation of the survey;

That all Lots are well and accurately marked with 2"x2" tacked hubs.

Marion N. Wheeler
Engineer Licence No. 75

Subscribed and Sworn to before me this 16th day of December, 1924.

Checked and approved this 30th day
of March A.D. 1925.
Wyo. License No. 101. *Herbert L. Kennedy*
Natrona County Surveyor.

Clarence M. Cassidy
Notary Public

My commission expires 11th day of September, 1927.