

200 JUN 3 10 11 11

CERTIFICATE OF DEDICATION

STATE OF WYOMING) ss
COUNTY OF NATRONA)

THE UNDERSIGNED DO HEREBY CERTIFY THAT THEY ARE THE OWNERS AND PROPRIETORS OF THE
LAND DESCRIBED IN THE INSTRUMENT REFERRED TO IN THIS CERTIFICATE OF DEDICATION,
AND THAT SAID LAND IS BEING DEDICATED TO THE PUBLIC USE OF THE CITY AND
COUNTY OF NATRONA, WYOMING, AND BEING MORE PARTICULARLY DESCRIBED AS FOLLOWS:

COMMENCING AT THE NORTHWEST CORNER OF SAID SECTION 7, MONUMENTED BY A BRASS CAP,
THE POINT OF BEGINNING, AND PROCEEDING WESTWARD BY A BRASS CAP,
THENCE S87°29'47"E, A DISTANCE OF 591.36 FEET TO A POINT OF CURVATURE, MONUMENTED BY A BRASS CAP;
THENCE ALONG A CURVE TO THE RIGHT, HAVING A RADIUS OF 591.36 FEET, AN ARC ANGLE OF 12°25'00",
A DISTANCE OF 107.17 FEET, TO A POINT OF TANGENCY, MONUMENTED BY A BRASS CAP;
THENCE S87°29'47"E, A DISTANCE OF 293.17 FEET TO A POINT OF CURVATURE, MONUMENTED BY A BRASS CAP;
THENCE ALONG A CURVE TO THE RIGHT, HAVING A RADIUS OF 591.36 FEET, AN ARC ANGLE OF 12°25'00",
A DISTANCE OF 107.17 FEET, TO A POINT OF TANGENCY, MONUMENTED BY A BRASS CAP;
THENCE S87°29'47"E, A DISTANCE OF 183.53 FEET, HAVING A CROSS BEARING OF S87°29'47"E, AND A DISTANCE OF 163.50 FEET TO A POINT
OF TANGENCY, MONUMENTED BY A BRASS CAP;
THENCE S27°58'07"E, A DISTANCE OF 835.88 FEET TO A POINT OF CURVATURE, MONUMENTED BY A BRASS CAP;
THENCE ALONG A CURVE TO THE LEFT, HAVING A RADIUS OF 5655.00 FEET, THROUGH A CENTRAL ANGLE OF 45°39'30",
A DISTANCE OF 1232.29 FEET, TO A POINT OF TANGENCY, MONUMENTED BY A BRASS CAP;
THENCE S72°22'29"E, A DISTANCE OF 337.98 FEET TO A POINT LOCATED ON THE WESTERN RIGHT-OF-WAY LINE OF THE
SIX ROAD (STATE HIGHWAY NO. 23), MONUMENTED BY A BRASS CAP;
THENCE S12°59'30"E, ALONG THE WESTERN RIGHT-OF-WAY LINE OF HAT SIX ROAD, A DISTANCE OF 150.01 FEET TO
A POINT MONUMENTED BY A BRASS CAP;
THENCE S72°22'29"W, A DISTANCE OF 337.98 FEET TO A POINT OF CURVATURE, MONUMENTED BY A BRASS CAP;
THENCE ALONG A CURVE TO THE RIGHT, HAVING A RADIUS OF 5655.00 FEET, THROUGH A CENTRAL ANGLE OF 45°39'30",
A DISTANCE OF 1232.29 FEET, HAVING A CROSS BEARING OF N87°22'29"W, AND A DISTANCE OF 1017.98 FEET TO A POINT,
MONUMENTED BY A BRASS CAP;
THENCE S18°42'47"W, A DISTANCE OF 510.00 FEET TO A POINT, MONUMENTED BY A BRASS CAP;
THENCE N1°28'00"W, A DISTANCE OF 375.86 FEET TO A POINT, MONUMENTED BY A BRASS CAP;
THENCE N0°08'49"W, A DISTANCE OF 118.50 FEET TO A POINT, MONUMENTED BY A BRASS CAP;
THENCE N1°02'14"W, A DISTANCE OF 248.50 FEET TO A POINT, MONUMENTED BY A BRASS CAP;
THENCE N2°14'49"W, A DISTANCE OF 427.77 FEET TO A POINT, MONUMENTED BY A BRASS CAP;
THENCE ALONG A CURVE TO THE LEFT, HAVING A RADIUS OF 5655.00 FEET, THROUGH A CENTRAL ANGLE OF 15°03'00",
A DISTANCE OF 1024.84 FEET, HAVING A CROSS BEARING OF N87°03'00"W, AND A DISTANCE OF 1502.29 FEET TO A
POINT OF TANGENCY, MONUMENTED BY A BRASS CAP;
THENCE S2°44'17"W, A DISTANCE OF 2303.17 FEET TO A POINT OF CURVATURE, MONUMENTED BY A
BRASS CAP;
THENCE ALONG A CURVE TO THE LEFT, HAVING A RADIUS OF 5655.00 FEET, THROUGH A CENTRAL ANGLE OF 13°50'30",
A DISTANCE OF 1232.29 FEET, HAVING A CROSS BEARING OF N87°22'29"W, AND A DISTANCE OF 1722.99 FEET TO A
POINT OF TANGENCY, MONUMENTED BY A BRASS CAP;
THENCE N87°29'47"W, A DISTANCE OF 543.32 FEET TO A POINT LOCATED ON THE WEST LINE OF SAID SECTION 7,
MONUMENTED BY A BRASS CAP;
THENCE NORTH 42° W, ALONG THE WEST LINE OF SAID SECTION 7, A DISTANCE OF 150.21 FEET TO THE POINT
OF BEGINNING.

THE ABOVE DESCRIBED PROPERTY, CONTAINS 66.90 ACRES, MORE OR LESS, AND IS SUBJECT TO ANY
RIGHTS OF WAY AND/OR EASEMENTS, RESERVATIONS OR ENCUMBRANCES WHICH HAVE BEEN
LEGALLY ACQUIRED.

THE TRACT OF LAND AS IT APPEARS ON THIS PLAT IS DEDICATED WITH THE FREE CONSENT AND IN
ACCORDANCE WITH THE TERMS OF THE INSTRUMENT REFERRED TO IN THIS CERTIFICATE OF DEDICATION,
AND THE UNDERSIGNED DO HEREBY CERTIFY THAT SAID LAND IS BEING DEDICATED TO THE PUBLIC USE AND
PRIVATE UTILITY PURPOSES AND IS BEING DEDICATED TO LOCAL, COUNTY, STATE AND FEDERAL
CORPORATE, STATE AND FEDERAL AGENCIES, AND TO THE PUBLIC USE AND PRIVATE UTILITY PURPOSES.
ALL OF SAID RIGHTS ARE HEREBY DEDICATED TO THE USE
OF THE PUBLIC.

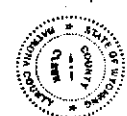
W. N. McMurry
V.A. RESOURCES, LLC
P.O. BOX 30786
CASPER, WYOMING 82406

THE FOREGOING INSTRUMENT WAS ACKNOWLEDGED BEFORE ME BY W. N. McMurry, THIS 21st
DAY OF JUNE 2004.
WITNESS MY HAND AND OFFICIAL SEAL
OF NATRONA COUNTY, WYOMING, THIS 21st DAY OF JUNE 2004.

BOARD OF COUNTY COMMISSIONERS
COUNTY OF NATRONA
KATHLEEN DIXON - JORDA CHAKRAM
KATHLEEN DIXON - JORDA CHAKRAM
MARGARET COLE
My term of office expires
January 2, 2007

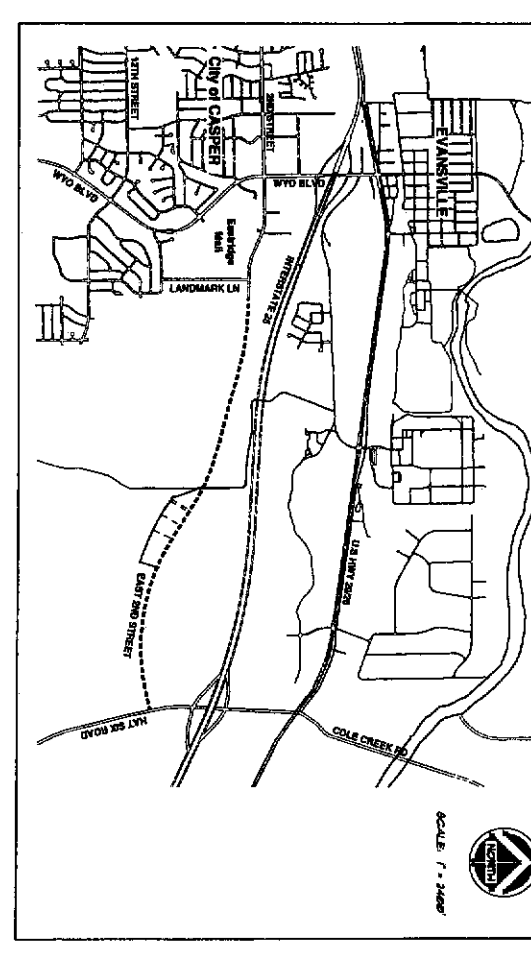
DAVID M. MESS
MAYOR
DAVID M. MESS
MAYOR PUBLIC

Notary Public
Casper, Wyoming
2004
159 term of office expires
January 2, 2007



APPROVED BY THE CITY CLERK OF NATRONA COUNTY, WYOMING THIS 21st DAY OF JUNE 2004.
APPROVED BY THE COUNTY CLERK OF NATRONA COUNTY, WYOMING THIS 21st DAY OF JUNE 2004.
CITY CLERK: Kathleen Dixon
COUNTY CLERK: Kathleen Dixon
NOTARY PUBLIC: David M. Mess
WITNESS MY HAND AND OFFICIAL SEAL OF NATRONA COUNTY, WYOMING, THIS 21st DAY OF JUNE 2004.

RECORDED
FILED FOR RECORD IN THE OFFICE OF THE COUNTY CLERK OF NATRONA COUNTY, WYOMING THIS 21st DAY OF JUNE 2004.
INSTRUMENT NO. 071941
W. N. McMurry
COUNTY SUPERVISOR



NOTES:
1. ERROR OF CLOSURE EXCEEDS 1:10,000.
2. BASIS OF BEARING IS THE WYOMING STATE PLANE COORDINATE SYSTEM, EAST CENTRAL ZONE, NAD 1983.

ANNEXATION AND PLAT
OF
McMURRY BUSINESS PARK NO. 1
N1/2, SECTION 7, SW1/4NW1/4, S1/2 SECTION 8
NW1/4SW1/4 SECTION 9, T.35N., R.78W.
NATRONA COUNTY, WYOMING
SHEET 5 OF 5



#-1264



Compliments of:
FIRST AMERICAN TITLE INSURANCE CO., INC. • (307) 237-8486
120 N. Center Street • Casper, WY 82601

Restrictions indicating a preference, limitation or discrimination based on
race, color, religion, sex, handicap, familial status, or national origin are
hereby deleted to the extent such restrictions violate 42 USC 3604(c).

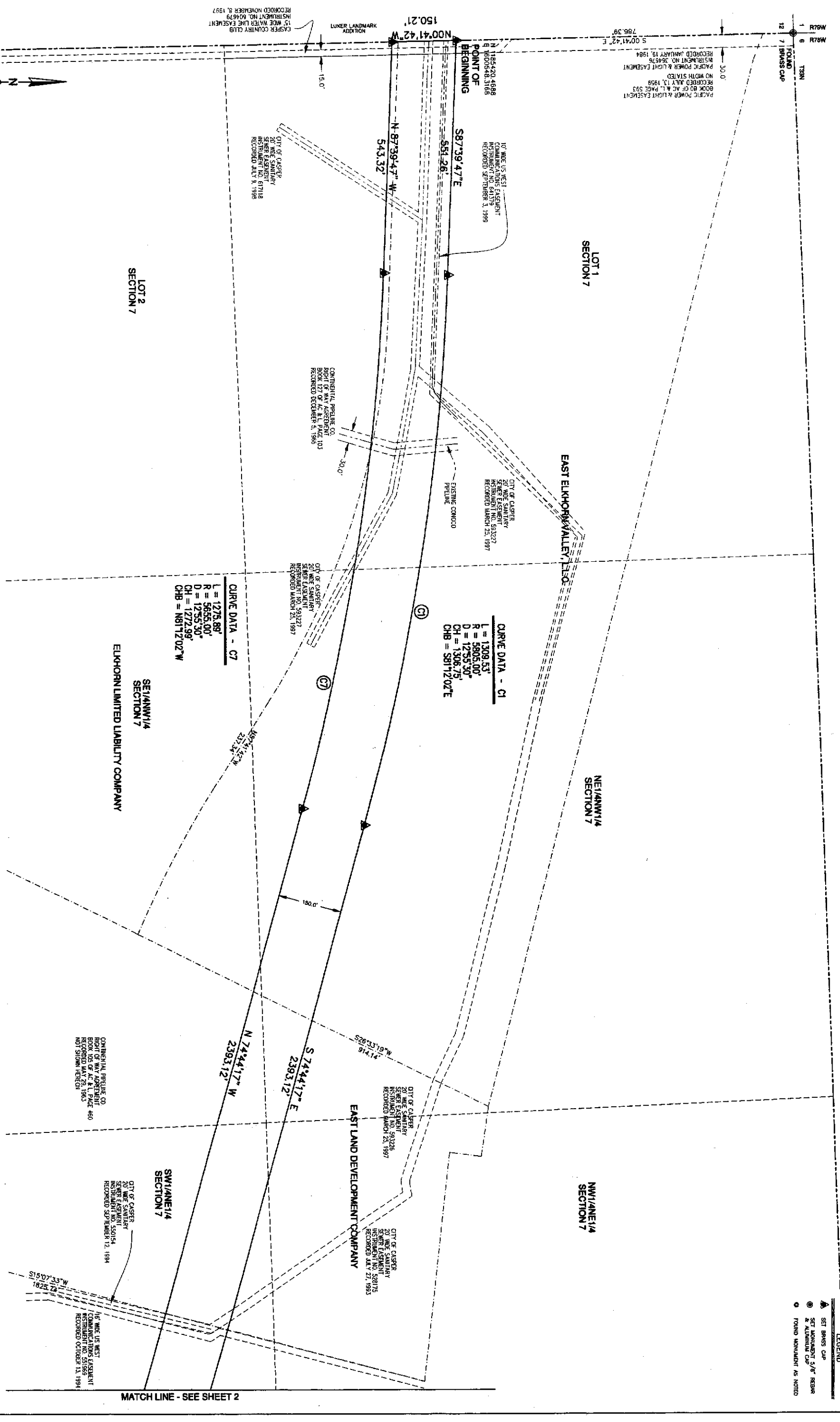
#1264

LEGEND
▲ SET BRASS CAP
● SET MONUMENT 3/8" REBAR
○ SET ALUMINUM CAP
○ FOUND MONUMENT AS NOTED

Restrictions indicating a preference, limitation or discrimination based on race, color, religion, sex, handicap, familial status, or national origin are hereby deleted to the extent such restrictions violate 42 USC 3604(c).



Comments of:
FIRST AMERICAN TITLE INSURANCE CO., INC.
120 N. Center Street • Casper, WY 82601 • (307) 237-8486

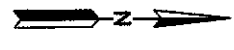


ANNEXATION AND PLAT
OF
McMURRY BUSINESS PARK NO. 1
N1/2, SECTION 7, SW1/4NW1/4, S1/2, SECTION 8
NW1/4SW1/4, SECTION 9, T.33N., R.78W.,
NATRONA COUNTY, WYOMING
SHEET 1 OF 5

MATCH LINE - SEE SHEET 2

743634 PAGE 2 OF 5

HORIZONTAL 0 100 200 1" = 100'



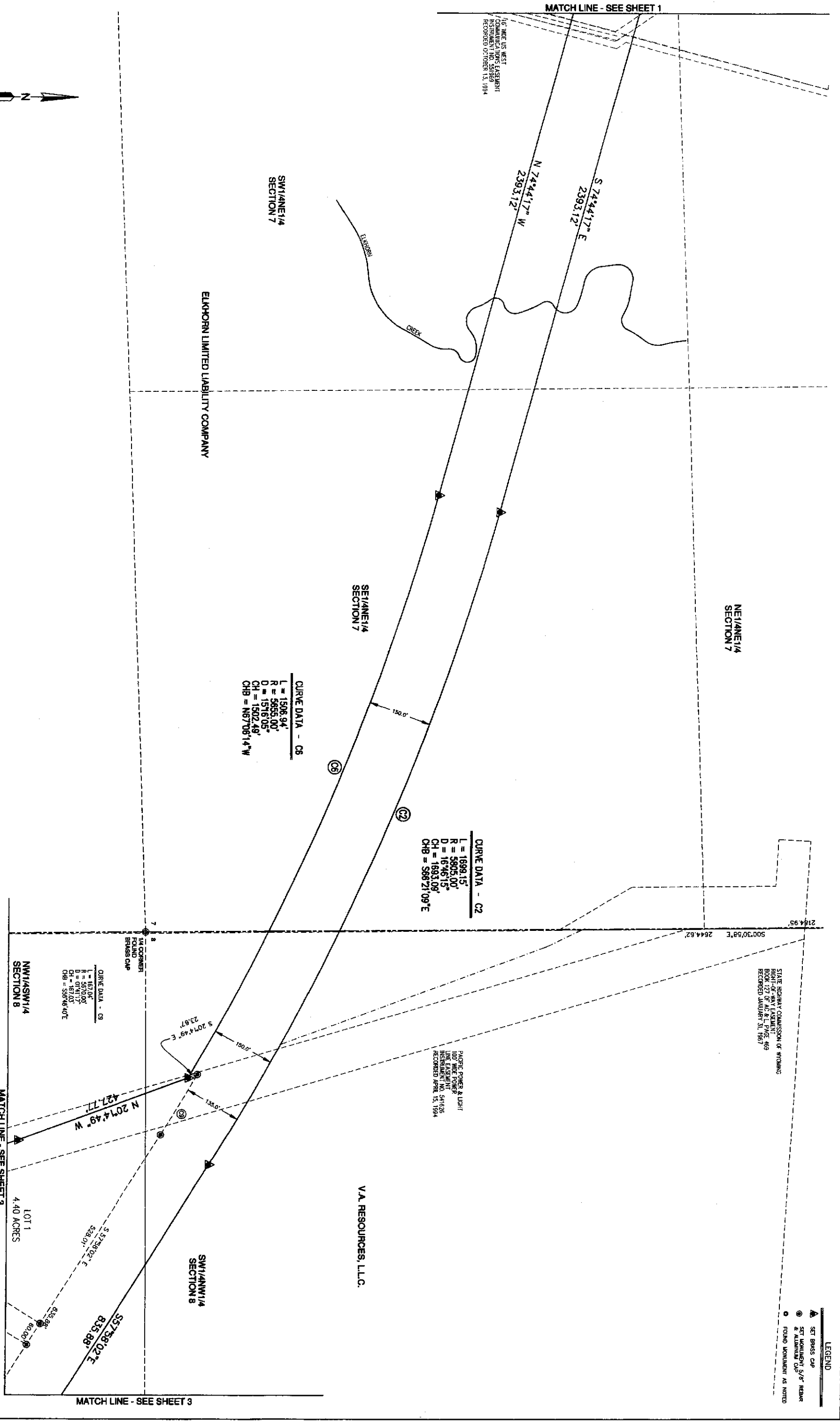
#1264

- LEGEND**
- ▲ SET BRASS CAP
 - SET MONUMENT 5/8" REBAR
 - SET ALUMINUM CAP
 - FOUND MONUMENT AS NOTED

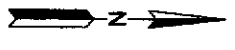
Restrictions indicating a preference, limitation or discrimination based on race, color, religion, sex, handicap, familial status, or national origin are hereby deleted to the extent such restrictions violate 42 USC 3604(c).



Compliments of:
FIRST AMERICAN TITLE INSURANCE CO., INC.
 120 N. Center Street • Casper, WY 82601 • (307) 237-8486



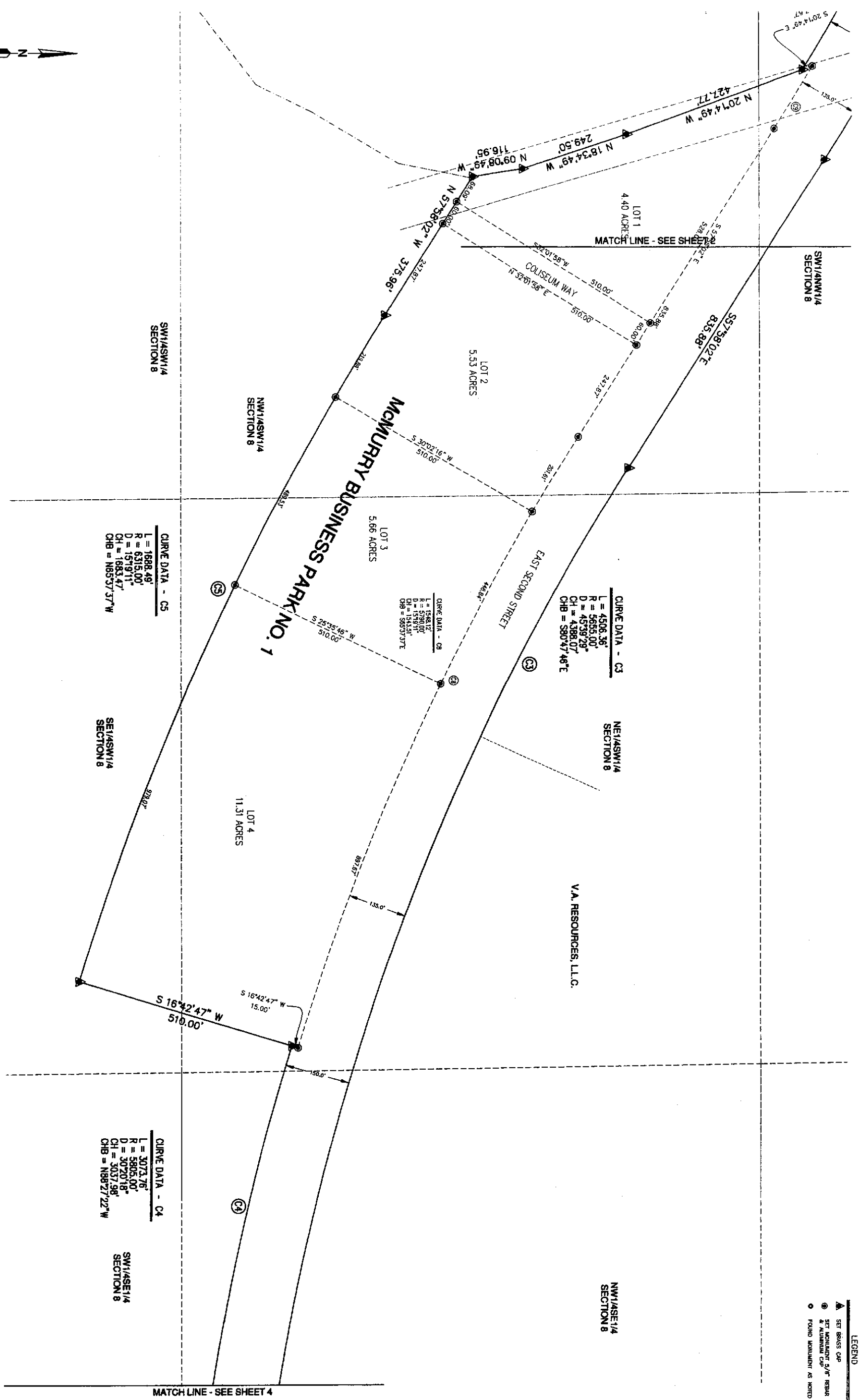
HORIZONTAL
 0 100 200
 1" = 100'



743624
 PAGE 2 OF 5

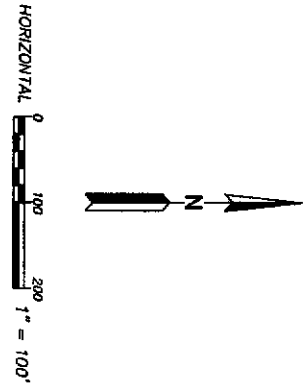
#1264

- LEGEND**
- ▲ SET BACK CURB
 - SET MONUMENT 5/8" REBAR
 - SET MONUMENT 1/2" REBAR
 - FOUND MONUMENT AS NOTED



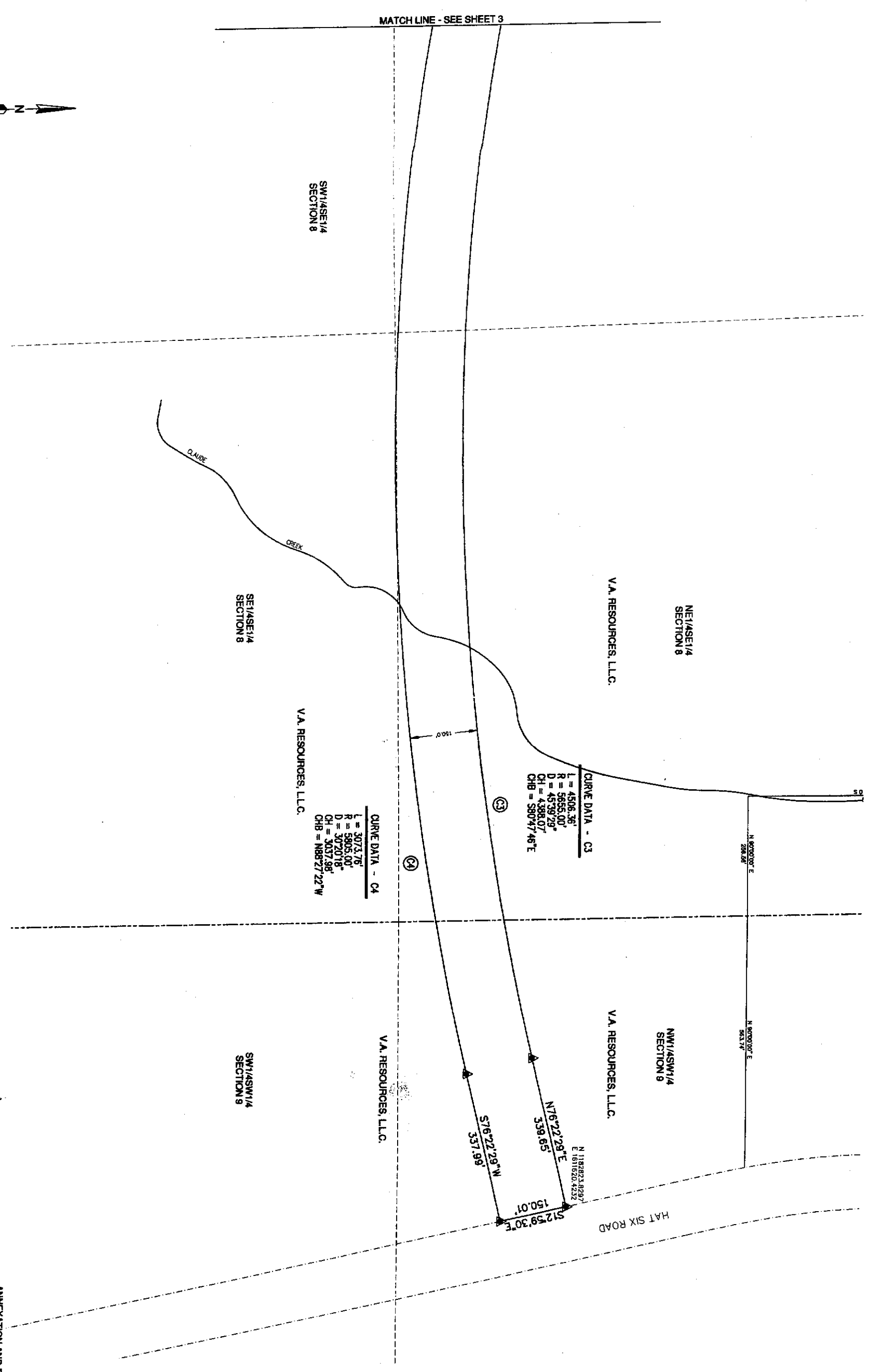
ANNEXATION AND PLAT
OF
McMURRY BUSINESS PARK NO. 1
 N1/2 SECTION 7, SW1/4NW1/4, S1/2 SECTION 8
 NW1/4SW1/4 SECTION 8, T.33N., R.78W.,
 MATRONA COUNTY, WYOMING
 SHEET 3 OF 5

743624
 PAGE 4 OF 5

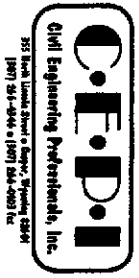
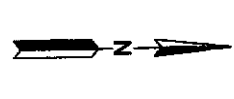


#1264

- LEGEND
- ▲ SET BRASS CAP
 - ⊙ SET MONUMENT S/P NEAR
 - ⊙ SET MONUMENT C/P NEAR
 - FOUND MONUMENT AS NOTED



HORIZONTAL 0 100 200 1" = 100'



743624 PAGE 2 OF 5

ANNEXATION AND PLAT
 OF
McMURRY BUSINESS PARK NO. 1
 N1/2 SECTION 7, SW1/4NW1/4, S1/2 SECTION 8
 NW1/4SW1/4 SECTION 9, T.33N., R.78W.,
 NATRONA COUNTY, WYOMING
 SHEET 4 OF 5