



- LEGEND
- A ST. IRON CAP
 - B ST. ALUMINUM CAP 5/8" DIA.
 - C ST. ALUMINUM CAP 1/2" DIA.
 - D ROUND DOWELBAR AS NOTED



MEADOWLANDS NO. 1
SIMPLE SUBDIVISION

EAST SECOND STREET
(150' ROW)

RANCH ROAD
SUBDIVISION

LOT 11
327 ACRES

LOT 12
338 ACRES

LOT 13
338 ACRES

LOT 9
770 ACRES

LOT 7
272 ACRES

LOT 1
239 ACRES

LOT 2
318 ACRES

LOT 3
411 ACRES

LOT 4
148 ACRES

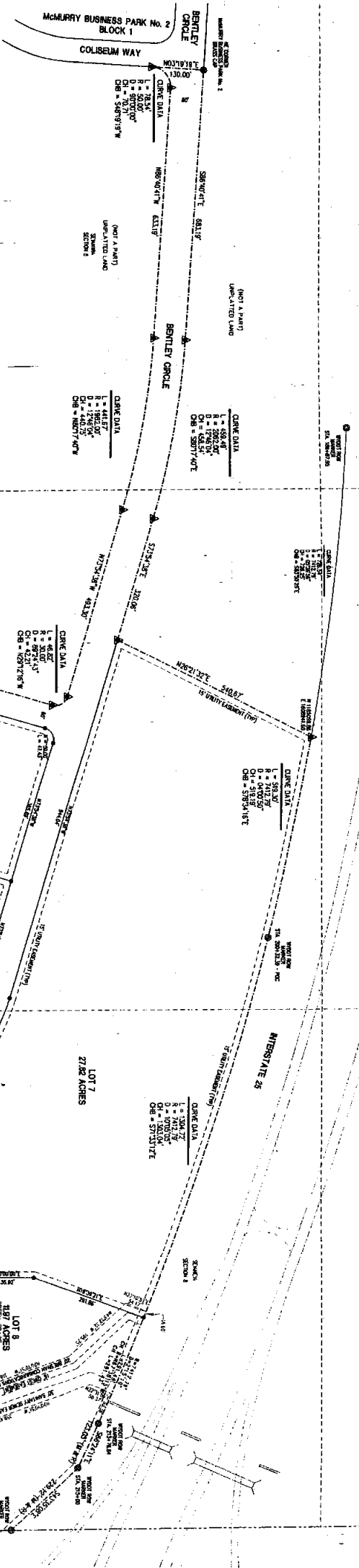
LOT 5
178 ACRES

LOT 6
238 ACRES

LOT 8
167 ACRES

VACATION AND REPLAT OF
MCMURRY MEDICAL
CAMPUS ADDITION
AS
PARK RIDGE MEDICAL
CAMPUS NO. 2 ADDITION
TO THE CITY OF CASPER, WYOMING
BEING A PORTION OF THE
NANSIKA, SPANEX,
SEAWAY OF SECTION 8
T. 33N., R. 7BW., 8TH P.M.,
NATRONA COUNTY, WYOMING

8065986



SHEET 1 OF 2