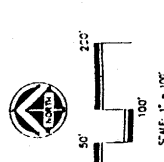
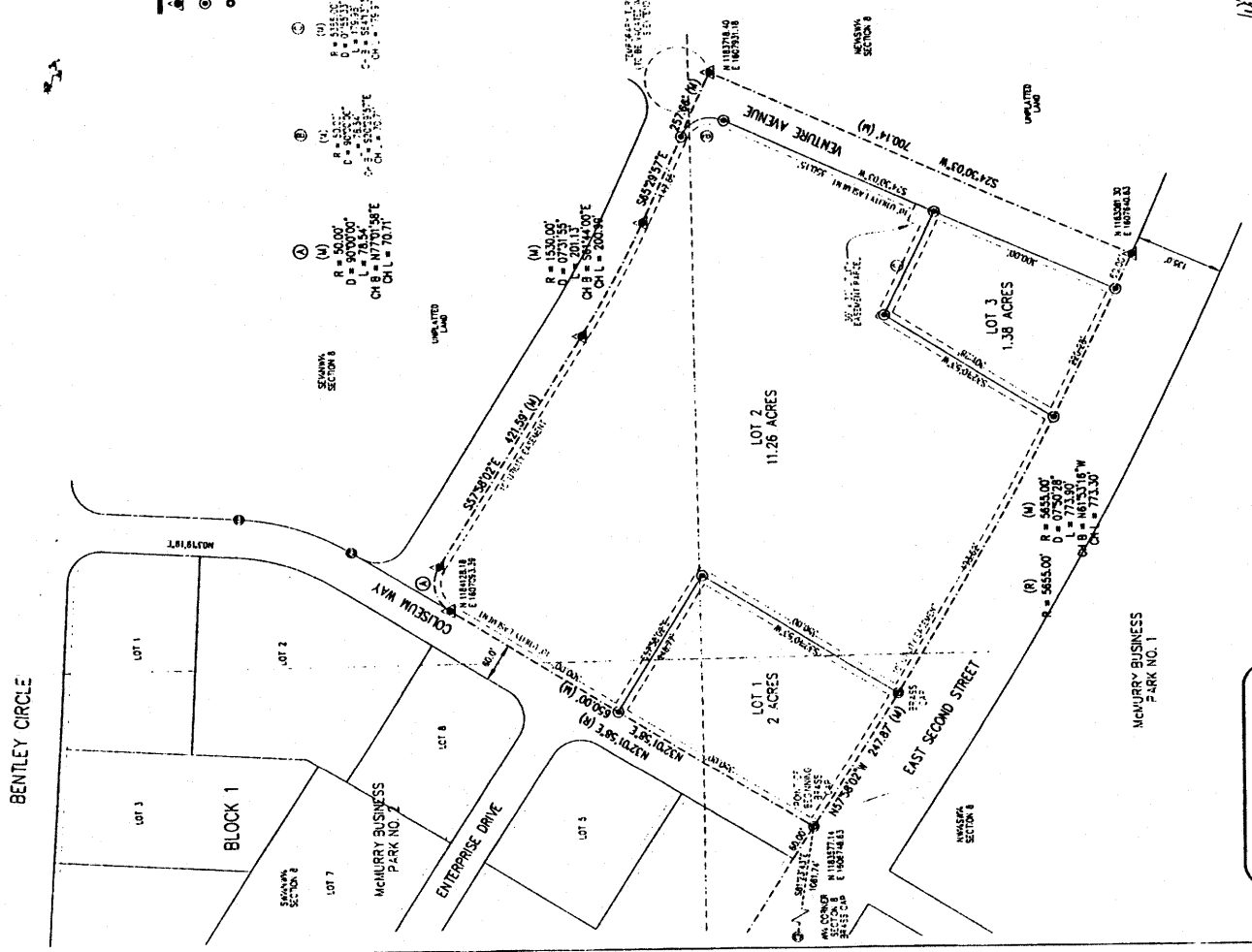


VICINITY MAP
NO SCALE



LEGEND

- ① SET BRASS CAP
- ② SET MONUMENT 5/8" REBAR
- ③ SET MONUMENT 1/2" ALUMINUM CAP
- FOUND MONUMENT AS NOTED



CERTIFICATE OF DEDICATION

STATE OF WYOMING } SS
COUNTY OF NATRONA }

THE UNDERSIGNED, A RESOURCES, LLC DOES HEREBY CERTIFY THAT THEY ARE THE OWNERS AND PROPRIETORS OF THE FOLLOWING DESCRIBED PARCELS OF LAND, A PART OF WHICH IS SITUATE IN THE S.W. 1/4 OF SECTION 8, T.33N., R.78W., S.17E., NATRONA COUNTY, WYOMING. SAID PARCELS ARE DESCRIBED AS FOLLOWS:

TRACT 1: A DISTANCE OF 101.81 FEET TO THE NORTHEAST CORNER OF QUARTER 1, UNIMPROVED BY A BRASS CAP, COMMENCING AT THE WEST N. CORNER OF SAID SECTION 8, UNIMPROVED BY A BRASS CAP.

TRACT 2: A DISTANCE OF 101.81 FEET TO THE NORTHEAST CORNER OF QUARTER 1, UNIMPROVED BY A BRASS CAP, COMMENCING AT THE WEST N. CORNER OF SAID SECTION 8, UNIMPROVED BY A BRASS CAP.

TRACT 3: A DISTANCE OF 101.81 FEET TO THE NORTHEAST CORNER OF QUARTER 1, UNIMPROVED BY A BRASS CAP, COMMENCING AT THE WEST N. CORNER OF SAID SECTION 8, UNIMPROVED BY A BRASS CAP.

TRACT 4: A DISTANCE OF 101.81 FEET TO THE NORTHEAST CORNER OF QUARTER 1, UNIMPROVED BY A BRASS CAP, COMMENCING AT THE WEST N. CORNER OF SAID SECTION 8, UNIMPROVED BY A BRASS CAP.

TRACT 5: A DISTANCE OF 101.81 FEET TO THE NORTHEAST CORNER OF QUARTER 1, UNIMPROVED BY A BRASS CAP, COMMENCING AT THE WEST N. CORNER OF SAID SECTION 8, UNIMPROVED BY A BRASS CAP.

TRACT 6: A DISTANCE OF 101.81 FEET TO THE NORTHEAST CORNER OF QUARTER 1, UNIMPROVED BY A BRASS CAP, COMMENCING AT THE WEST N. CORNER OF SAID SECTION 8, UNIMPROVED BY A BRASS CAP.

TRACT 7: A DISTANCE OF 101.81 FEET TO THE NORTHEAST CORNER OF QUARTER 1, UNIMPROVED BY A BRASS CAP, COMMENCING AT THE WEST N. CORNER OF SAID SECTION 8, UNIMPROVED BY A BRASS CAP.

TRACT 8: A DISTANCE OF 101.81 FEET TO THE NORTHEAST CORNER OF QUARTER 1, UNIMPROVED BY A BRASS CAP, COMMENCING AT THE WEST N. CORNER OF SAID SECTION 8, UNIMPROVED BY A BRASS CAP.

TRACT 9: A DISTANCE OF 101.81 FEET TO THE NORTHEAST CORNER OF QUARTER 1, UNIMPROVED BY A BRASS CAP, COMMENCING AT THE WEST N. CORNER OF SAID SECTION 8, UNIMPROVED BY A BRASS CAP.

TRACT 10: A DISTANCE OF 101.81 FEET TO THE NORTHEAST CORNER OF QUARTER 1, UNIMPROVED BY A BRASS CAP, COMMENCING AT THE WEST N. CORNER OF SAID SECTION 8, UNIMPROVED BY A BRASS CAP.

TRACT 11: A DISTANCE OF 101.81 FEET TO THE NORTHEAST CORNER OF QUARTER 1, UNIMPROVED BY A BRASS CAP, COMMENCING AT THE WEST N. CORNER OF SAID SECTION 8, UNIMPROVED BY A BRASS CAP.

TRACT 12: A DISTANCE OF 101.81 FEET TO THE NORTHEAST CORNER OF QUARTER 1, UNIMPROVED BY A BRASS CAP, COMMENCING AT THE WEST N. CORNER OF SAID SECTION 8, UNIMPROVED BY A BRASS CAP.

TRACT 13: A DISTANCE OF 101.81 FEET TO THE NORTHEAST CORNER OF QUARTER 1, UNIMPROVED BY A BRASS CAP, COMMENCING AT THE WEST N. CORNER OF SAID SECTION 8, UNIMPROVED BY A BRASS CAP.

TRACT 14: A DISTANCE OF 101.81 FEET TO THE NORTHEAST CORNER OF QUARTER 1, UNIMPROVED BY A BRASS CAP, COMMENCING AT THE WEST N. CORNER OF SAID SECTION 8, UNIMPROVED BY A BRASS CAP.

TRACT 15: A DISTANCE OF 101.81 FEET TO THE NORTHEAST CORNER OF QUARTER 1, UNIMPROVED BY A BRASS CAP, COMMENCING AT THE WEST N. CORNER OF SAID SECTION 8, UNIMPROVED BY A BRASS CAP.

TRACT 16: A DISTANCE OF 101.81 FEET TO THE NORTHEAST CORNER OF QUARTER 1, UNIMPROVED BY A BRASS CAP, COMMENCING AT THE WEST N. CORNER OF SAID SECTION 8, UNIMPROVED BY A BRASS CAP.

TRACT 17: A DISTANCE OF 101.81 FEET TO THE NORTHEAST CORNER OF QUARTER 1, UNIMPROVED BY A BRASS CAP, COMMENCING AT THE WEST N. CORNER OF SAID SECTION 8, UNIMPROVED BY A BRASS CAP.

TRACT 18: A DISTANCE OF 101.81 FEET TO THE NORTHEAST CORNER OF QUARTER 1, UNIMPROVED BY A BRASS CAP, COMMENCING AT THE WEST N. CORNER OF SAID SECTION 8, UNIMPROVED BY A BRASS CAP.

TRACT 19: A DISTANCE OF 101.81 FEET TO THE NORTHEAST CORNER OF QUARTER 1, UNIMPROVED BY A BRASS CAP, COMMENCING AT THE WEST N. CORNER OF SAID SECTION 8, UNIMPROVED BY A BRASS CAP.

TRACT 20: A DISTANCE OF 101.81 FEET TO THE NORTHEAST CORNER OF QUARTER 1, UNIMPROVED BY A BRASS CAP, COMMENCING AT THE WEST N. CORNER OF SAID SECTION 8, UNIMPROVED BY A BRASS CAP.

APPROVALS

APPROVED BY THE CITY OF CASPER PLANNING AND ZONING COMMISSION OF CASPER, WYOMING THIS 10th DAY OF February, 2008.

ATTEST: Shirley R. Bly SECRETARY

APPROVED BY THE CITY COUNCIL OF CASPER, WYOMING BY ORDINANCE NO. 5, 5th DAY OF February, 2008.

APPROVED AND APPROVED: Richard R. Bly CHAIRMAN

ATTEST: Michael R. Bly MAYOR

INSPECTED AND APPROVED THIS 10th DAY OF March, 2008. W. R. Finkner CITY ENGINEER

INSPECTED AND APPROVED THIS 10th DAY OF March, 2008. Shirley R. Bly CITY SURVEYOR

INSPECTED AND APPROVED THIS 22nd DAY OF March, 2008. John M. Cook COUNTY SURVEYOR

RECORDED

FOR RECORD IN THE OFFICE OF THE COUNTY CLERK OF NATRONA COUNTY, WYOMING THIS 10th DAY OF February, 2008.

INSTRUMENT NO. 789041

NOTES

1. ERROR OF CLOSURE: 1:34,230

2. BASIS OF BEARING IS THE WYOMING STATE PLANE COORDINATE SYSTEM, EAST CENTRAL ZONE, NAD 83/1983.

3. PUBLIC WATER AND SEWER ALL BE SHOWN BY THE CITY OF CASPER, WYOMING.

4. POINT OF BEGINNING, CONVERGENCE ANGLE = 074°47'51", THE CORRECTION FACTOR = 0.98973

CERTIFICATE OF SURVEYOR

STATE OF WYOMING } SS

COUNTY OF NATRONA }

I, William R. Finkner, A REGISTERED PROFESSIONAL LAND SURVEYOR LICENSE NO. 3182, DO HEREBY CERTIFY THAT THIS PLAT WAS MADE FROM NOTES TAKEN DURING AN ACTUAL SURVEY MADE UNDER MY DIRECT SUPERVISION IN JULY AND AUGUST, 2008, AND THAT THIS PLAT, TO THE BEST OF MY KNOWLEDGE AND BELIEF, CORRECTLY AND ACCURATELY REPRESENTS SAID SURVEY AND ALL INFORMATION THEREON IS CORRECT TO THE BEST OF MY KNOWLEDGE AND BELIEF.

THE FOREGOING INSTRUMENT WAS ACKNOWLEDGED BEFORE ME BY WILLIAM R. FINKNER THIS 8th DAY OF MARCH, 2008.

WITNESSES MY HAND AND OFFICIAL SEAL OF NATRONA COUNTY, WYOMING, THIS 10th DAY OF FEBRUARY, 2008.

William R. Finkner

FINAL PLAT
OF
McMURRY BUSINESS PARK NO. 3
AN ADDITION TO THE CITY OF CASPER
BEING A PORTION OF THE
S.W. 1/4, R. 78W., S. 17E.,
T. 33N., NATRONA COUNTY WYOMING