

CERTIFICATE OF DEDICATION
 STATE OF WYOMING }
 COUNTY OF NATRONA } SS

THE UNDERSIGNED, V.A. RESOURCES, LLC, DOES HEREBY CERTIFY THAT THEY ARE THE OWNERS AND PROPRIETORS OF THE FOLLOWING DESCRIBED PARCEL OF LAND SITUATE WITHIN PORTIONS OF THE NW1/4 AND SW1/4 OF SECTION 8, T.33N., R.78W., 6TH P.M., NATRONA COUNTY, WYOMING, BEING MORE PARTICULARLY DESCRIBED AS FOLLOWS:

COMMENCING AT THE WEST 1/4 CORNER OF SAID SECTION 8, MONUMENTED BY A BRASS CAP;
 THENCE NORTH 0°29'27" ALONG THE WEST LINE OF SAID SECTION 8, A DISTANCE OF 1088.81 FEET TO A POINT LOCATED ON THE NORTH LINE OF ENTERPRISE DRIVE; THENCE ALONG SAID LINE OF ENTERPRISE DRIVE TO THE SOUTHWEST CORNER OF THE PARCEL, BEING DESCRIBED, MONUMENTED BY A BRASS CAP AND BEING THE POINT OF BEGINNING;
 THENCE NORTH 20°23'29" ALONG THE WEST LINE OF SAID SECTION 8 AND THE PARCEL BEING DESCRIBED, A DISTANCE OF 504.90 FEET TO THE NORTHWEST CORNER OF THE PARCEL, LOCATED ON THE SOUTH LINE OF U.S. INTERSTATE 25, MONUMENTED BY A CONCRETE HIGHWAY MONUMENT STAMPED STA. 18254+00.04;
 THENCE S 87°41'17" ALONG THE SOUTH LINE OF U.S. INTERSTATE 25 AND THE NORTH LINE OF THE PARCEL BEING DESCRIBED, A DISTANCE OF 208.20 FEET TO A POINT MONUMENTED BY A CONCRETE HIGHWAY MONUMENT STAMPED STA. 18254+04.86;
 THENCE S 87°41'17" ALONG THE SOUTH LINE OF U.S. INTERSTATE 25 AND THE NORTH LINE OF THE PARCEL BEING DESCRIBED, A DISTANCE OF 48.66 FEET TO THE NORTHWEST CORNER OF LOT 1, McMURRY BUSINESS PARK NO. 4, MONUMENTED BY A BRASS CAP;
 THENCE S 87°41'17" ALONG THE EAST LINE OF THE PARCEL, BEING DESCRIBED AND THE WEST LINE OF SAID LOT 1, McMURRY BUSINESS PARK NO. 4, A DISTANCE OF 416.41 FEET TO THE SOUTHWEST CORNER OF SAID LOT 1, McMURRY BUSINESS PARK NO. 4, MONUMENTED BY A BRASS CAP;
 THENCE S 87°41'17" ALONG THE SOUTH LINE OF THE PARCEL AND THE NORTH LINE OF BENTLEY DRIVE, A DISTANCE OF 250.00 FEET TO A POINT OF CURVATURE MONUMENTED BY A BRASS CAP;
 THENCE ALONG THE SOUTHERLY LINE OF THE PARCEL, THE NORTHERLY LINE OF BENTLEY DRIVE AND A CURVE TO THE LEFT HAVING A RADIUS OF 540.00 FEET, THROUGH A CENTRAL ANGLE OF 47°30'37", AN ARC LENGTH OF 447.77 FEET, HAVING A CHORD BEARING OF S 87°41'17" E, A DISTANCE OF 453.05 FEET TO A POINT OF REVERSE CURVATURE MONUMENTED BY A BRASS CAP;
 THENCE ALONG THE SOUTHERLY LINE OF THE PARCEL, THE NORTHERLY LINE OF ENTERPRISE DRIVE AND A CURVE TO THE RIGHT HAVING A RADIUS OF 540.00 FEET, THROUGH A CENTRAL ANGLE OF 70°23'21", AN ARC LENGTH OF 64.81 FEET, HAVING A CHORD BEARING OF S 87°41'17" E, A DISTANCE OF 57.78 FEET TO THE END OF CURVE, MONUMENTED BY A BRASS CAP;
 THENCE N 87°41'17" ALONG THE SOUTHERLY LINE OF THE PARCEL, THE NORTH LINE OF ENTERPRISE DRIVE AND THE DURLAND ADDITION, A DISTANCE OF 282.22 FEET TO THE POINT OF BEGINNING;
 THE ABOVE DESCRIBED TRACT OF LAND CONTAINS 10.79 ACRES, MORE OR LESS, AND IS SUBJECT TO ANY RIGHTS-OF-WAY AND/OR EASEMENTS, RESERVATIONS AND ENCUMBRANCES WHICH HAVE BEEN LEGALLY ACQUIRED.

THE TRACT OF LAND, AS IT APPEARS ON THIS PLAT, IS DEDICATED WITH THE FREE CONSENT AND IN ACCORDANCE WITH THE DESIRES OF THE UNDERSIGNED OWNERS AND PROPRIETORS. THE NAME OF THE SUBDIVISION SHALL BE "McMURRY BUSINESS PARK NO. 4" AND THE OWNERS HEREBY GRANT TO THE PUBLIC AND PRIVATE UTILITY COMPANIES AN EASEMENT AND LICENSE TO LOCATE, CONSTRUCT, USE AND MAINTAIN CONDUITS, LINES, WIRES AND PIPES, ANY OF ALL OF THEM, UNDER AND ALONG THE STREETS OF SAID SUBDIVISION, AND TO INSTALL, MAINTAIN, REPAIR, REPLACE, REMOVE AND ABANDON ANY SUCH UTILITIES AND EQUIPMENT THEREON, AND TO USE ANY SUCH UTILITIES AND EQUIPMENT FOR THE PURPOSES INTENDED BY THE PUBLIC. ALL ROADS AND STREETS AS SHOWN HEREON HAVE PREVIOUSLY BEEN DEDICATED TO THE USE OF THE PUBLIC.

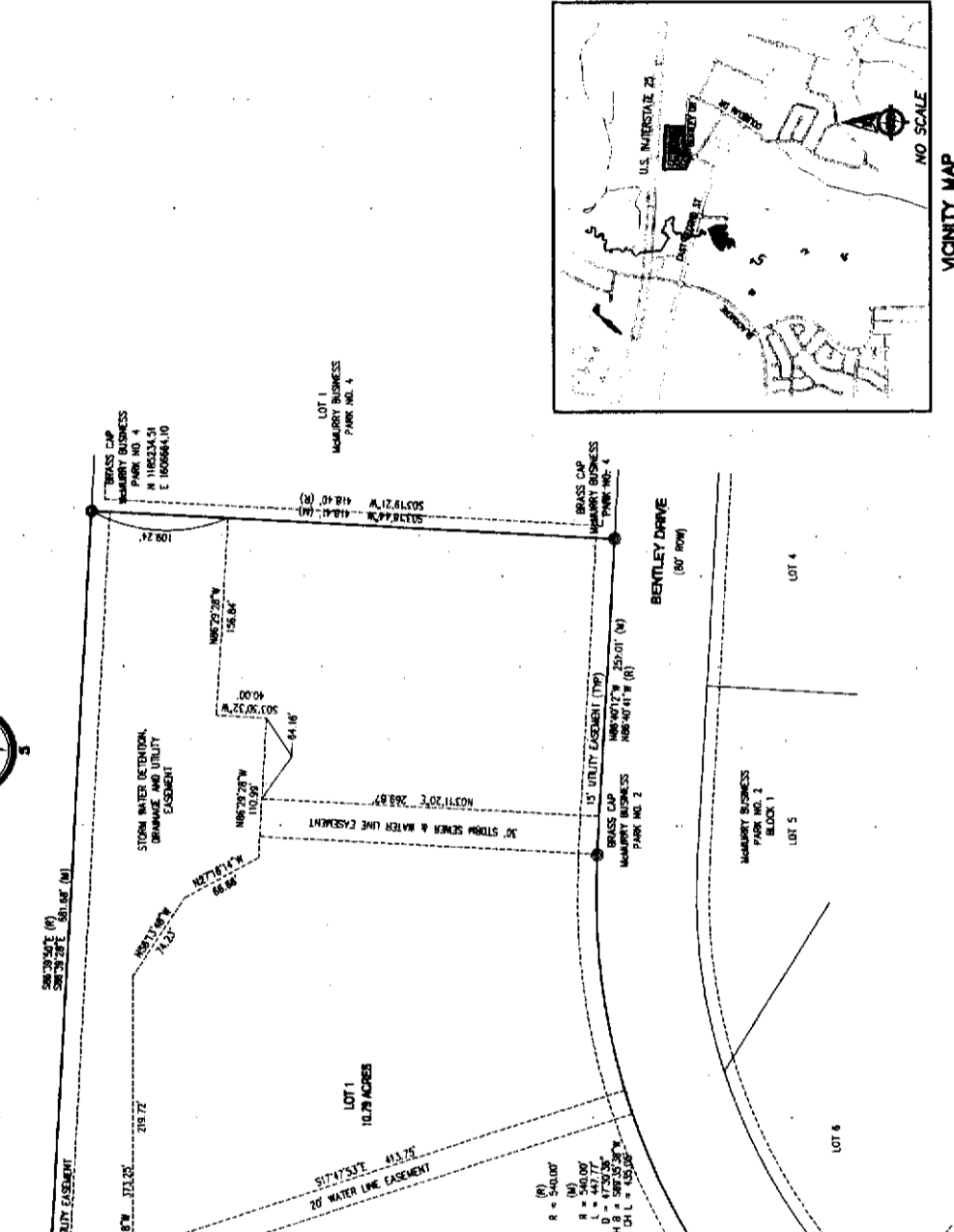
V.A. RESOURCES, LLC
 2452 HAT SIX ROAD
 EVANSVILLE, WYOMING 82836

Doris McMurry
 DORIS McMURRY - MANAGING MEMBER
 THE FOREGOING INSTRUMENT WAS ACKNOWLEDGED BEFORE ME BY DORIS McMURRY, MANAGING MEMBER OF V.A. RESOURCES, LLC, THIS 1ST DAY OF MAY, 2013.

Leanne Hogan
 WITNESS MY HAND AND OFFICIAL SEAL
 MY COMMISSION EXPIRES 07/23/2016
 LEANNE HOGAN
 COUNTY CLERK

LEGEND

- ▲ SET BRASS CAP
- SET MONUMENT 5/8" REDBAR & ALUMINUM CAP
- FOUND MONUMENT AS NOTED



CERTIFICATE OF SURVEYOR
 STATE OF WYOMING }
 COUNTY OF NATRONA } SS

I, WILLIAM R. FEHRNER, A REGISTERED PROFESSIONAL LAND SURVEYOR, LICENSE NO. 5528, DO HEREBY CERTIFY THAT THIS PLAT WAS MADE FROM NOTES TAKEN DURING AN ACTUAL SURVEY MADE UNDER MY DIRECT SUPERVISION IN AND ACCORDANCE WITH THE BEST OF MY KNOWLEDGE AND BELIEF, CORRECT TO THE BEST OF MY KNOWLEDGE AND BELIEF, AND THAT ALL DIMENSIONS ARE IN FEET AND DECIMALS THEREOF AND COORDINATES REFERRED TO THE TRUE MERIDIAN. ALL BEING TRUE AND CORRECT TO THE BEST OF MY KNOWLEDGE AND BELIEF.

APPROVED BY THE CITY COUNCIL OF CASPER, WYOMING BY ORDINANCE NO. 13-13, DAILY PASSED, AND APPROVED THIS 15th DAY OF May, 2013.

ATTEST: *Liz Bachal*
 CITY CLERK

INSPECTED AND APPROVED THIS 3rd DAY OF May, 2013.
William R. Fehner
 CITY ENGINEER

INSPECTED AND APPROVED THIS 3rd DAY OF May, 2013.
William R. Fehner
 CITY SURVEYOR

APPROVED BY THE CITY COUNCIL OF CASPER, WYOMING BY ORDINANCE NO. 13-13, DAILY PASSED, AND APPROVED THIS 15th DAY OF May, 2013.

ATTEST: *Liz Bachal*
 CITY CLERK

INSPECTED AND APPROVED THIS 3rd DAY OF May, 2013.
William R. Fehner
 CITY ENGINEER

INSPECTED AND APPROVED THIS 3rd DAY OF May, 2013.
William R. Fehner
 CITY SURVEYOR

APPROVED BY THE CITY COUNCIL OF CASPER, WYOMING BY ORDINANCE NO. 13-13, DAILY PASSED, AND APPROVED THIS 15th DAY OF May, 2013.

ATTEST: *Liz Bachal*
 CITY CLERK

INSPECTED AND APPROVED THIS 3rd DAY OF May, 2013.
William R. Fehner
 CITY ENGINEER

INSPECTED AND APPROVED THIS 3rd DAY OF May, 2013.
William R. Fehner
 CITY SURVEYOR

APPROVED BY THE CITY COUNCIL OF CASPER, WYOMING BY ORDINANCE NO. 13-13, DAILY PASSED, AND APPROVED THIS 15th DAY OF May, 2013.

ATTEST: *Liz Bachal*
 CITY CLERK

INSPECTED AND APPROVED THIS 3rd DAY OF May, 2013.
William R. Fehner
 CITY ENGINEER

INSPECTED AND APPROVED THIS 3rd DAY OF May, 2013.
William R. Fehner
 CITY SURVEYOR

APPROVED BY THE CITY COUNCIL OF CASPER, WYOMING BY ORDINANCE NO. 13-13, DAILY PASSED, AND APPROVED THIS 15th DAY OF May, 2013.

ATTEST: *Liz Bachal*
 CITY CLERK

INSPECTED AND APPROVED THIS 3rd DAY OF May, 2013.
William R. Fehner
 CITY ENGINEER

INSPECTED AND APPROVED THIS 3rd DAY OF May, 2013.
William R. Fehner
 CITY SURVEYOR

APPROVED BY THE CITY COUNCIL OF CASPER, WYOMING BY ORDINANCE NO. 13-13, DAILY PASSED, AND APPROVED THIS 15th DAY OF May, 2013.

ATTEST: *Liz Bachal*
 CITY CLERK

INSPECTED AND APPROVED THIS 3rd DAY OF May, 2013.
William R. Fehner
 CITY ENGINEER

INSPECTED AND APPROVED THIS 3rd DAY OF May, 2013.
William R. Fehner
 CITY SURVEYOR

APPROVED BY THE CITY COUNCIL OF CASPER, WYOMING BY ORDINANCE NO. 13-13, DAILY PASSED, AND APPROVED THIS 15th DAY OF May, 2013.

ATTEST: *Liz Bachal*
 CITY CLERK

INSPECTED AND APPROVED THIS 3rd DAY OF May, 2013.
William R. Fehner
 CITY ENGINEER

INSPECTED AND APPROVED THIS 3rd DAY OF May, 2013.
William R. Fehner
 CITY SURVEYOR

APPROVED BY THE CITY COUNCIL OF CASPER, WYOMING BY ORDINANCE NO. 13-13, DAILY PASSED, AND APPROVED THIS 15th DAY OF May, 2013.

ATTEST: *Liz Bachal*
 CITY CLERK

INSPECTED AND APPROVED THIS 3rd DAY OF May, 2013.
William R. Fehner
 CITY ENGINEER

INSPECTED AND APPROVED THIS 3rd DAY OF May, 2013.
William R. Fehner
 CITY SURVEYOR

SCALE: 1" = 60'

0' 30' 60' 120'

cepi
 Civil Engineering Professionals, Inc.
 6000 Eastpark Drive, Casper, WY 82409
 Phone: 307.251.4688 Fax: 307.251.4689
 www.cepi-wy.com

NOTARY PUBLIC
 STATE OF WYOMING
 COUNTY OF NATRONA

NOTARY PUBLIC
 STATE OF WYOMING
 COUNTY OF NATRONA

NOTARY PUBLIC
 STATE OF WYOMING
 COUNTY OF NATRONA

NOTARY PUBLIC
 STATE OF WYOMING
 COUNTY OF NATRONA

NOTARY PUBLIC
 STATE OF WYOMING
 COUNTY OF NATRONA

NOTARY PUBLIC
 STATE OF WYOMING
 COUNTY OF NATRONA

NOTARY PUBLIC
 STATE OF WYOMING
 COUNTY OF NATRONA

NOTARY PUBLIC
 STATE OF WYOMING
 COUNTY OF NATRONA

NOTARY PUBLIC
 STATE OF WYOMING
 COUNTY OF NATRONA

NOTARY PUBLIC
 STATE OF WYOMING
 COUNTY OF NATRONA

NOTARY PUBLIC
 STATE OF WYOMING
 COUNTY OF NATRONA

NOTARY PUBLIC
 STATE OF WYOMING
 COUNTY OF NATRONA

NOTARY PUBLIC
 STATE OF WYOMING
 COUNTY OF NATRONA

NOTARY PUBLIC
 STATE OF WYOMING
 COUNTY OF NATRONA

NOTARY PUBLIC
 STATE OF WYOMING
 COUNTY OF NATRONA

NOTARY PUBLIC
 STATE OF WYOMING
 COUNTY OF NATRONA

NOTARY PUBLIC
 STATE OF WYOMING
 COUNTY OF NATRONA

NOTARY PUBLIC
 STATE OF WYOMING
 COUNTY OF NATRONA

NOTARY PUBLIC
 STATE OF WYOMING
 COUNTY OF NATRONA

NOTARY PUBLIC
 STATE OF WYOMING
 COUNTY OF NATRONA

NOTARY PUBLIC
 STATE OF WYOMING
 COUNTY OF NATRONA

NOTARY PUBLIC
 STATE OF WYOMING
 COUNTY OF NATRONA

NOTARY PUBLIC
 STATE OF WYOMING
 COUNTY OF NATRONA

NOTARY PUBLIC
 STATE OF WYOMING
 COUNTY OF NATRONA

NOTARY PUBLIC
 STATE OF WYOMING
 COUNTY OF NATRONA