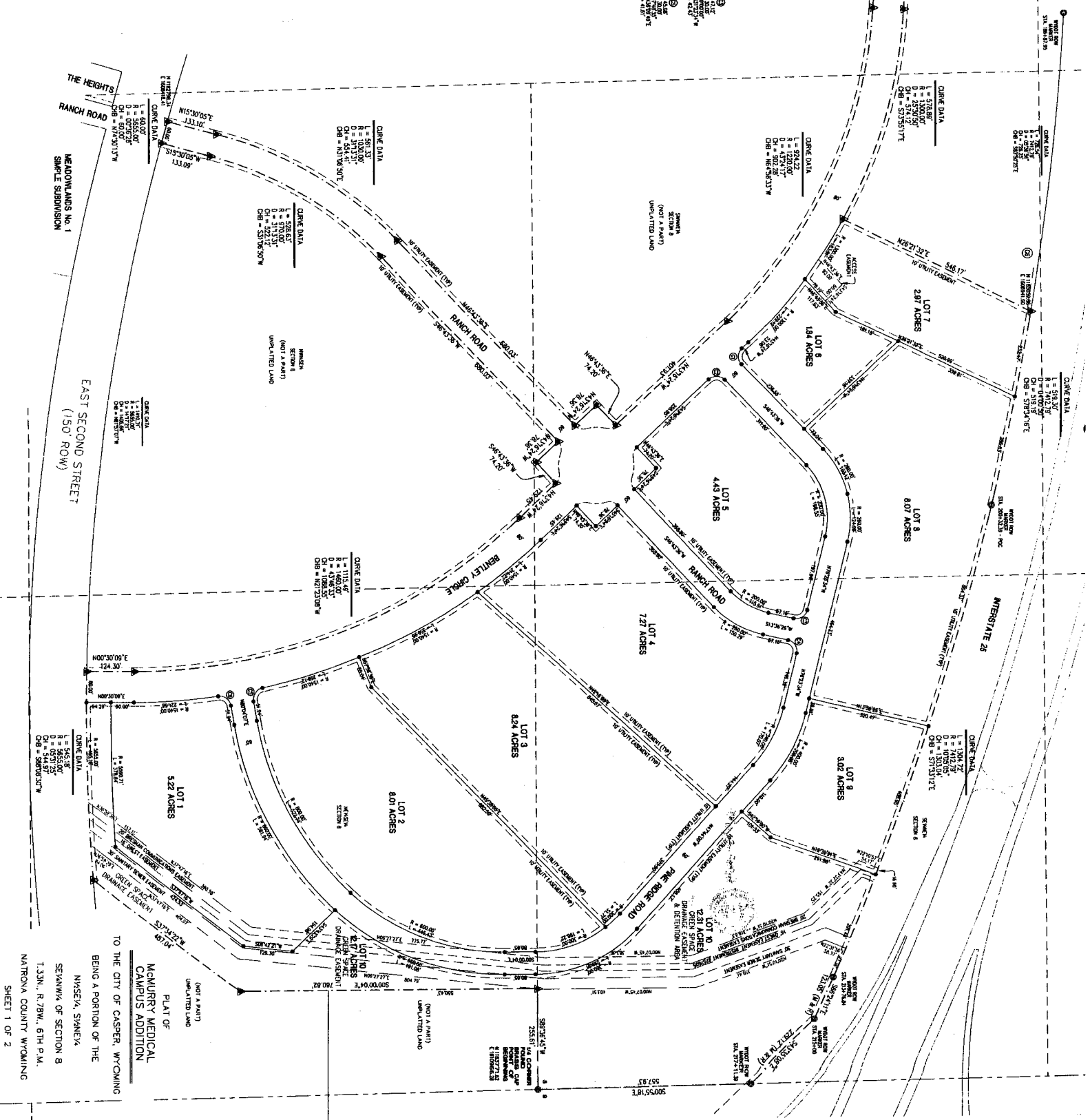


- ▲ SET BRASS CAP
- SET ALUMINUM CAP
- FOUND MONUMENT AS NOTED



1" = 100'



PLAT OF
MCMURRY MEDICAL
CAMPUS ADDITION
BEING A PORTION OF THE
NAYSEM, SWENKA
SEWANNA OF SECTION 8
T.33N., R.78W., 6TH P.M.
NATRONA COUNTY WYOMING

SHEET 1 OF 2

NO. 89-34

