

CERTIFICATE OF DEDICATION

STATE OF WYOMING
COUNTY OF NATRONA

THE UNDERSIGNED, DAVID L. & JENISE C. WHISLER OWNERS OF LOTS 37, 38 & 39, MEADOW ACRES NO. 2 SUBDIVISION AND LOREN R. COULTITS OWNER OF LOTS 32 AND 33, MEADOW ACRES NO. 2 SUBDIVISION, HEREBY CERTIFY THAT THEY ARE THE OWNERS AND PROPRIETORS OF THE FOLLOWING DESCRIBED PARCEL OF LAND, A PORTION OF LAND SITUATE IN THE NW1/4, NE1/4, AND THE E1/2NE1/4 OF SECTION 4, T. 33N, R. 77W, BEING MORE PARTICULARLY DESCRIBED AS FOLLOWS:

COMMENCING AT THE CENTER 1/4 CORNER OF SAID SECTION 4, MONUMENTED BY AN IRON PIPE;

THENCE N27°03'12" E, A DISTANCE OF 2102.80 FEET TO THE SOUTHWEST CORNER OF LOT 37, MONUMENTED BY A REBAR AND BEING THE POINT OF BEGINNING;

THENCE N00°43'32" W, A DISTANCE OF 335.78 FEET TO A POINT MONUMENTED BY A REBAR;

THENCE N00°43'10" W, A DISTANCE OF 128.37 FEET TO THE NORTHWEST CORNER OF THE PARCEL LOCATED WITHIN THE NORTH PLATE RIVER MONUMENTED BY AN ALUMINUM CAP WITNESS CORNER LOCATED S00°43'07" E, A DISTANCE OF 80.0 FEET FROM THE ACTUAL CORNER;

THENCE N89°06'00" E, A DISTANCE OF 488.81 FEET TO THE NORTHEAST CORNER OF THE PARCEL, MONUMENTED BY AN ALUMINUM CAP WITNESS CORNER LOCATED S04°50'09" E, A DISTANCE OF 30.0 FEET FROM THE ACTUAL CORNER LOCATION;

THENCE S00°43'00" E, A DISTANCE OF 289.84 FEET TO A POINT MONUMENTED BY AN ALUMINUM CAP;

THENCE S14°8'25" W, A DISTANCE OF 347.02 FEET TO A POINT MONUMENTED BY AN ALUMINUM CAP;

THENCE S00°43'11" E, A DISTANCE OF 671.21 FEET TO A POINT MONUMENTED BY AN ALUMINUM CAP;

THENCE N89°26'00" E, ALONG THE NORTH LINE OF FORBES LOT 36A, MEADOW ACRES NO. 2, A DISTANCE OF 413.56 FEET TO A POINT MONUMENTED BY AN ALUMINUM CAP;

THENCE S00°74'55" E, A DISTANCE OF 505.60 FEET TO THE SOUTHEAST CORNER OF THE PARCEL LOCATED ON THE NORTHERLY LINE OF FOXBORO TRAIL, MONUMENTED BY AN ALUMINUM CAP;

THENCE S77°10'38" W, ALONG THE NORTHERLY LINE OF FOXBORO TRAIL, A DISTANCE OF 721.31 FEET TO THE SOUTHWEST CORNER OF THE PARCEL, MONUMENTED BY AN ALUMINUM CAP;

THENCE N01°11'13" W, A DISTANCE OF 731.58 FEET TO A POINT MONUMENTED BY AN ALUMINUM CAP;

THENCE N04°55'15" E, A DISTANCE OF 313.78 FEET TO A POINT MONUMENTED BY AN ALUMINUM CAP;

THENCE N87°24'07" W, A DISTANCE OF 100.45 FEET TO A POINT MONUMENTED BY AN ALUMINUM CAP;

THENCE N00°43'24" W, A DISTANCE OF 353.50 FEET TO THE POINT OF BEGINNING.

THE ABOVE DESCRIBED TRACT OF LAND CONTAINS 19.73 ACRES, MORE OR LESS, AND IS SUBJECT TO ANY RIGHTS-OF-WAY AND/OR EASEMENTS, RESERVATIONS AND ENCUMBRANCES WHICH HAVE BEEN LEGALLY ACQUIRED.

THE TRACT OF LAND AS IT APPEARS ON THIS AMENDED FINAL PLAT IS DEDICATED WITH THE FREE CONSENT AND IN ACCORDANCE WITH THE DESIRES OF THE UNDERSIGNED OWNERS AND PROPRIETORS, THE NAME OF THE AMENDED FINAL PLAT SHALL BE "MEADOW ACRES NO. 2 SUBDIVISION, LOTS 37, 38 & 39", AND THE OWNERS HEREBY GRANT TO THE PUBLIC AND PRIVATE UTILITY COMPANIES AN EASEMENT AND LICENSE TO LOCATE, CONSTRUCT, USE AND MAINTAIN CONDUITS, LINES, WIRES AND DEPRESSIONS, ANY OR ALL OF THEM UNDER AND ALONG THE STRIPS OF LAND MARKED "UTILITY EASEMENT" AS SHOWN ON THIS PLAT. ALL ROADS AND STREETS AS SHOWN HERONON HAVE BEEN DEDICATED AS PER THE RECORDED INSTRUMENTS AS SHOWN ON THIS PLAT.

DAVID L. WHISLER, OWNER LOTS 37, 38 & 39

JENISE C. WHISLER, OWNER LOTS 37, 38 & 39

THE FOREGOING INSTRUMENT WAS ACKNOWLEDGED BEFORE ME BY DAVID L. & JENISE C. WHISLER ON THIS _____ DAY OF _____, 2007.

BY COMMISSIONER EXPRESSES: _____

NOTARY PUBLIC

LOREN R. COULTITS - OWNER LOTS 32 & 33

THE FOREGOING INSTRUMENT WAS ACKNOWLEDGED BEFORE ME BY LOREN R. COULTITS ON THIS _____ DAY OF _____, 2007.

BY COMMISSIONER EXPRESSES: _____

NOTARY PUBLIC

MEADOW ACRES NO. 2 SUBDIVISION

PORTION OF LOT 32, LOT 33, LOT 34A, LOT 35A & LOT 36A

LOTS 37, 38 & 39

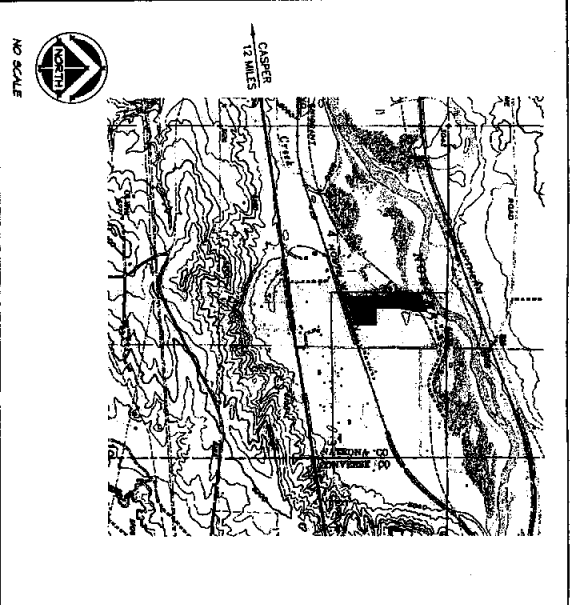
AMENDED FINAL PLAT OF

BEING A PORTION OF THE NAWANEA, EVANEA

OF SECTION 4, T. 33N, R. 77W,

NATRONA COUNTY, WYOMING

816144



VICINITY MAP

CERTIFICATE OF AMENDED FINAL PLAT APPROVAL

I DO HEREBY CERTIFY THAT THIS AMENDED FINAL PLAT HAS BEEN EXAMINED BY ME AND FOUND TO COMPLY WITH THE REGULATIONS FOR NATRONA COUNTY, WYOMING, AND IS THEREFORE, APPROVED FOR RECORDING.

COUNTY PLANNER/DATE

HEALTH OFFICER/DATE

FILED FOR THE RECORD IN THE OFFICE OF THE COUNTY CLERK OF NATRONA COUNTY, WYOMING ON THE _____ DAY OF _____, 2007.

RECORDED

FILED FOR RECORD IN THE OFFICE OF THE COUNTY CLERK OF NATRONA COUNTY, WYOMING THIS _____ DAY OF _____, 2007.

INSTRUMENT NO. 216474

NOTES

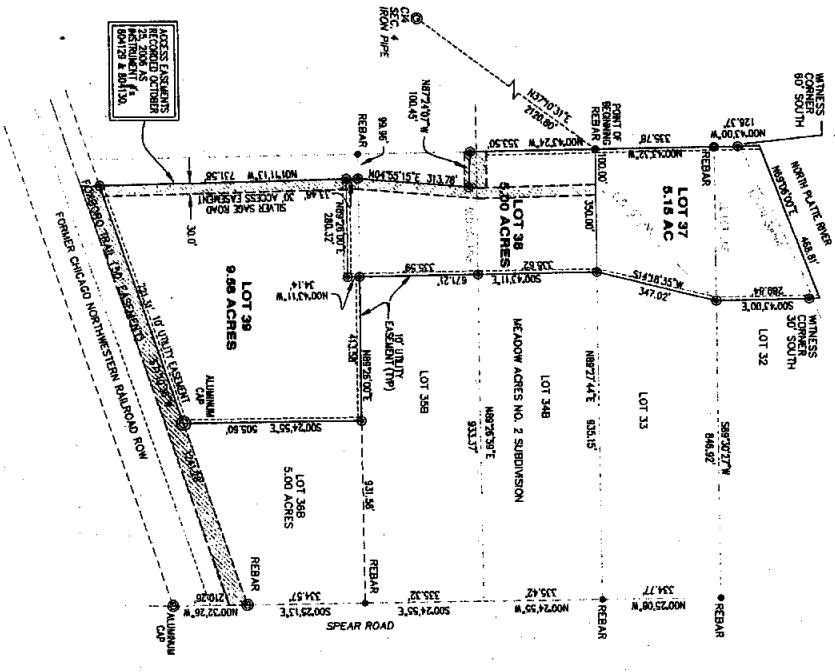
1. ERROR OF CLOSURE EXCEEDS 1:30,420.

2. BASIS OF BEARINGS IS GEODETIC BASED ON GPS.

CERTIFICATE OF SURVEYOR

STATE OF WYOMING)
COUNTY OF NATRONA) SS

KNOW ALL MEN BY THESE PRESENTS, THAT I, WILLIAM R. FERHINGER, DO HEREBY CERTIFY THAT I PREPARED THIS PLAT FROM AN ACTUAL AND ACCURATE SURVEY OF THE LAND AND THAT THE CORNER MONUMENTS SHOWN THEREON WERE PROPERLY PLACED UNDER MY DIRECT SUPERVISION, IN ACCORDANCE WITH THE SUBDIVISION REGULATIONS OF NATRONA COUNTY.



LEGEND

- ▲ SET BRASS CAP
- SET MONUMENT 5/8" REBAR
- FOUND MONUMENT AS NOTED

