

#1324
2 of 2

Restrictions indicating a preference, limitation or discrimination based on race, color, religion, sex, handicap, familial status, or national origin are hereby deleted to the extent such restrictions violate 42 USC 3604(c).



Compliments of:
FIRST AMERICAN TITLE INSURANCE CO., INC.
120 N. Center Street • Casper, WY 82601 • (307) 237-8486

STATE OF WYOMING
PLAT NO. 117-51

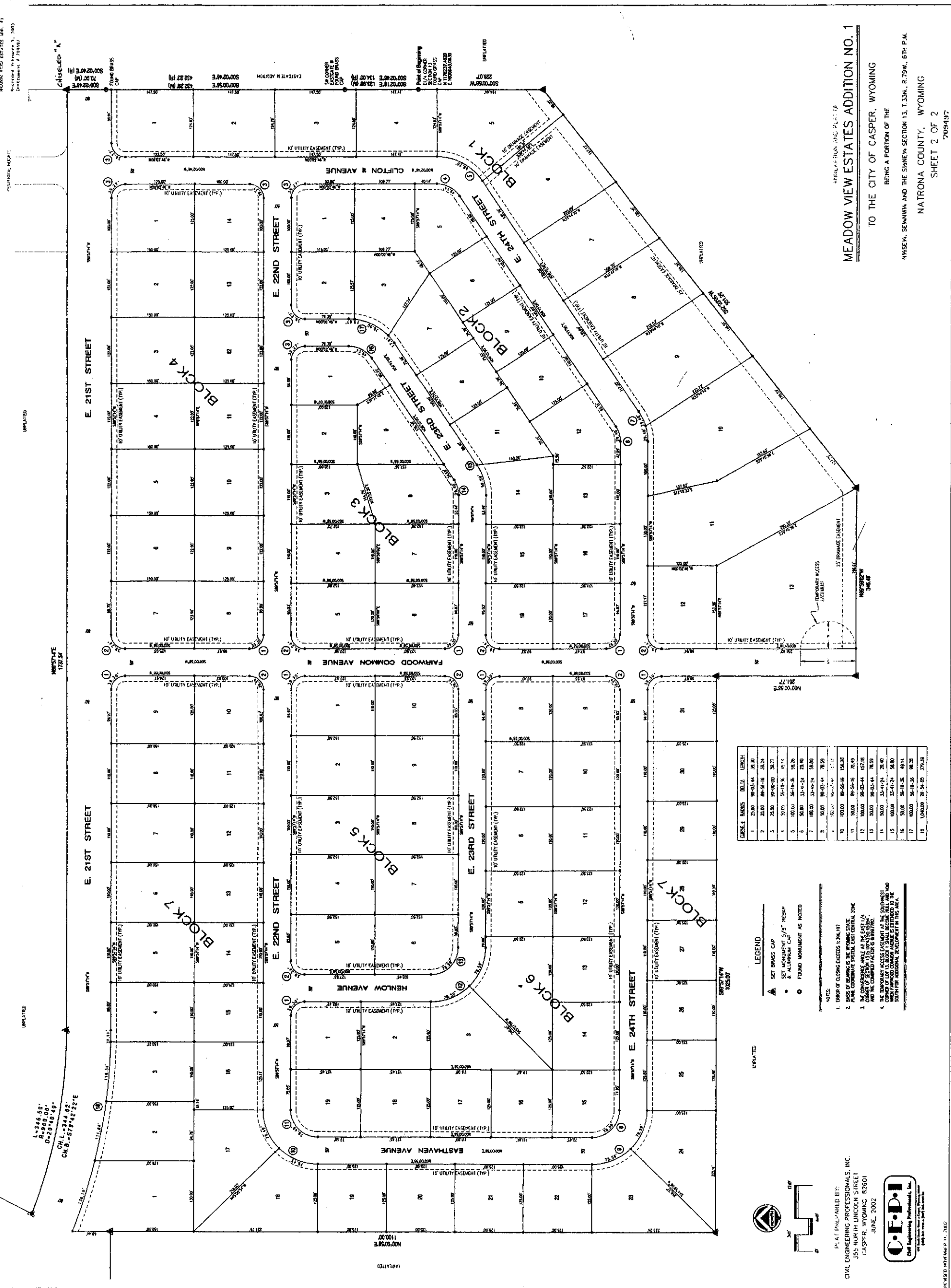
MEADOW VIEW ESTATES ADDITION NO. 1
Recorded Instrument No. 2003
December 2, 2004

UNPLATTED

UNPLATTED

UNPLATTED

UNPLATTED



LOT NO.	ACRES	DEED REF.	RECORD NO.
1	25.00	89-03-44	3530
2	25.00	89-03-44	3531
3	25.00	89-03-44	3532
4	25.00	89-03-44	3533
5	25.00	89-03-44	3534
6	25.00	89-03-44	3535
7	25.00	89-03-44	3536
8	25.00	89-03-44	3537
9	25.00	89-03-44	3538
10	25.00	89-03-44	3539
11	25.00	89-03-44	3540
12	25.00	89-03-44	3541
13	25.00	89-03-44	3542
14	25.00	89-03-44	3543
15	25.00	89-03-44	3544
16	25.00	89-03-44	3545
17	25.00	89-03-44	3546
18	25.00	89-03-44	3547
19	25.00	89-03-44	3548
20	25.00	89-03-44	3549
21	25.00	89-03-44	3550
22	25.00	89-03-44	3551
23	25.00	89-03-44	3552
24	25.00	89-03-44	3553
25	25.00	89-03-44	3554
26	25.00	89-03-44	3555
27	25.00	89-03-44	3556
28	25.00	89-03-44	3557
29	25.00	89-03-44	3558
30	25.00	89-03-44	3559
31	25.00	89-03-44	3560

LEGEND

- ▲ SET BRASS CAP
- SET MONUMENT 5/8" REBAR
- SET ALUMINUM CAP
- FOUND MONUMENT AS NOTED

NOTES:

- ERROR OF CLOSURE EXCEEDS 1/8" IN 19'
- BASED ON BEARING & DISTANCE
- PLANE COORDINATE SYSTEM EAST CENTRAL ZONE
- THE COMPASS BEARING IS AT THE EAST END OF THE LINE
- AND THE CORNER FACTOR IS NEGATIVE
- THE EASEMENT ACCESS EASEMENT AT THE SOUTHWEST CORNER OF LOT 11, BLOCK 1, SHALL BECOME A PERMANENT EASEMENT FOR THE SOUTH FOR AGRICULTURAL DEVELOPMENT IN THIS AREA.

UNPLATTED

PLAT PREPARED BY:
CIVIL ENGINEERING PROFESSIONALS, INC.
355 NORTH LINCOLN STREET
CASPER, WYOMING 82601
JUNE, 2002

REVISIONS: NONE

MEADOW VIEW ESTATES ADDITION NO. 1
TO THE CITY OF CASPER, WYOMING
BEING A PORTION OF THE
N45E1/4, SE1/4SW1/4 AND THE SW1/4SW SECTION 13, T.33N., R.79W., 6TH P.M.
NATRONA COUNTY, WYOMING
SHEET 2 OF 2
7059497