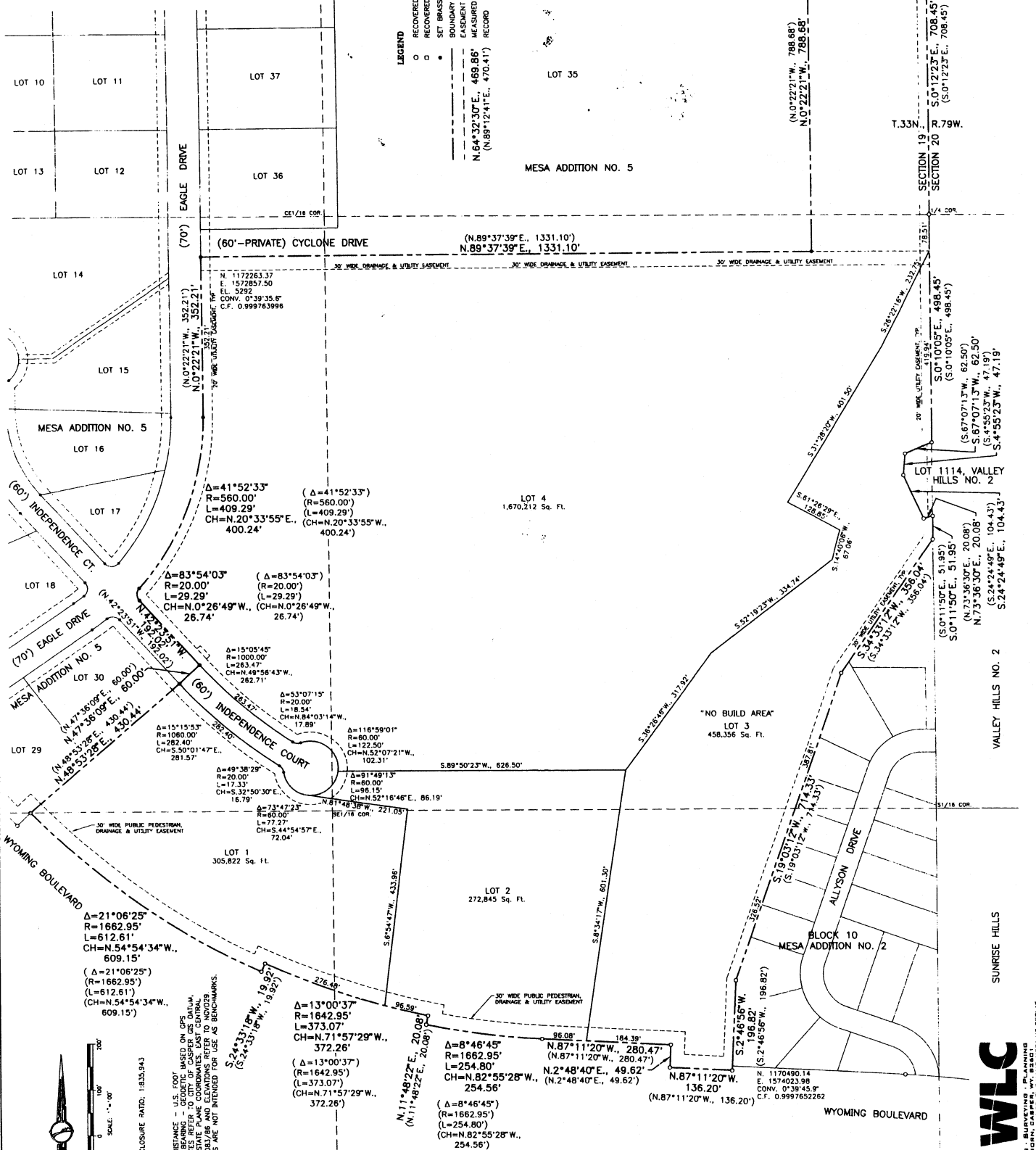


PLAT OF
 "MESA ADDITION NO. 6"
 TO THE CITY OF CASPER, WYOMING
 A VACATION AND REPLAT OF ALL OF
 LOTS 31, 32, 33, 34, HYLISE DRIVE AND
 A PORTION OF INDEPENDENCE COURT
 MESA ADDITION NO. 5
 TO THE CITY OF CASPER, WYOMING
 A SUBDIVISION OF PORTIONS OF THE
 SE1/4NW1/4, SE1/4 AND NE1/4, SECTION 19
 TOWNSHIP 33 NORTH, RANGE 79 WEST
 SIXTH PRINCIPAL MERIDIAN
 NATRONA COUNTY, WYOMING
 SCALE: 1"=100'
 PAGE 2 OF 2



VALLEY HILLS NO. 2

SUNRISE HILLS



ENGINEERING - SURVEYING - PLANNING
 300 PROSPERITY, CASPER, WY. 82401
 TEL: (307) 234-1111 FAX: (307) 234-1112