

3/2105

1322-A

PLAT OF
MESA ADDITION
 NO. 2
 TO THE CITY OF CASPER
 Being part of Section 19, T33N, R79W of the Sixth
 Principal Meridian, City of Casper, Natrona County, WY.

STATE OF WYOMING
 COUNTY OF NATRONA

BEFORE ME, the undersigned authority, on this day personally appeared **James H. Reed**, known to me to be the person whose name is subscribed to the foregoing instrument, and acknowledged to me that he executed the same for the purposes and consideration therein expressed.

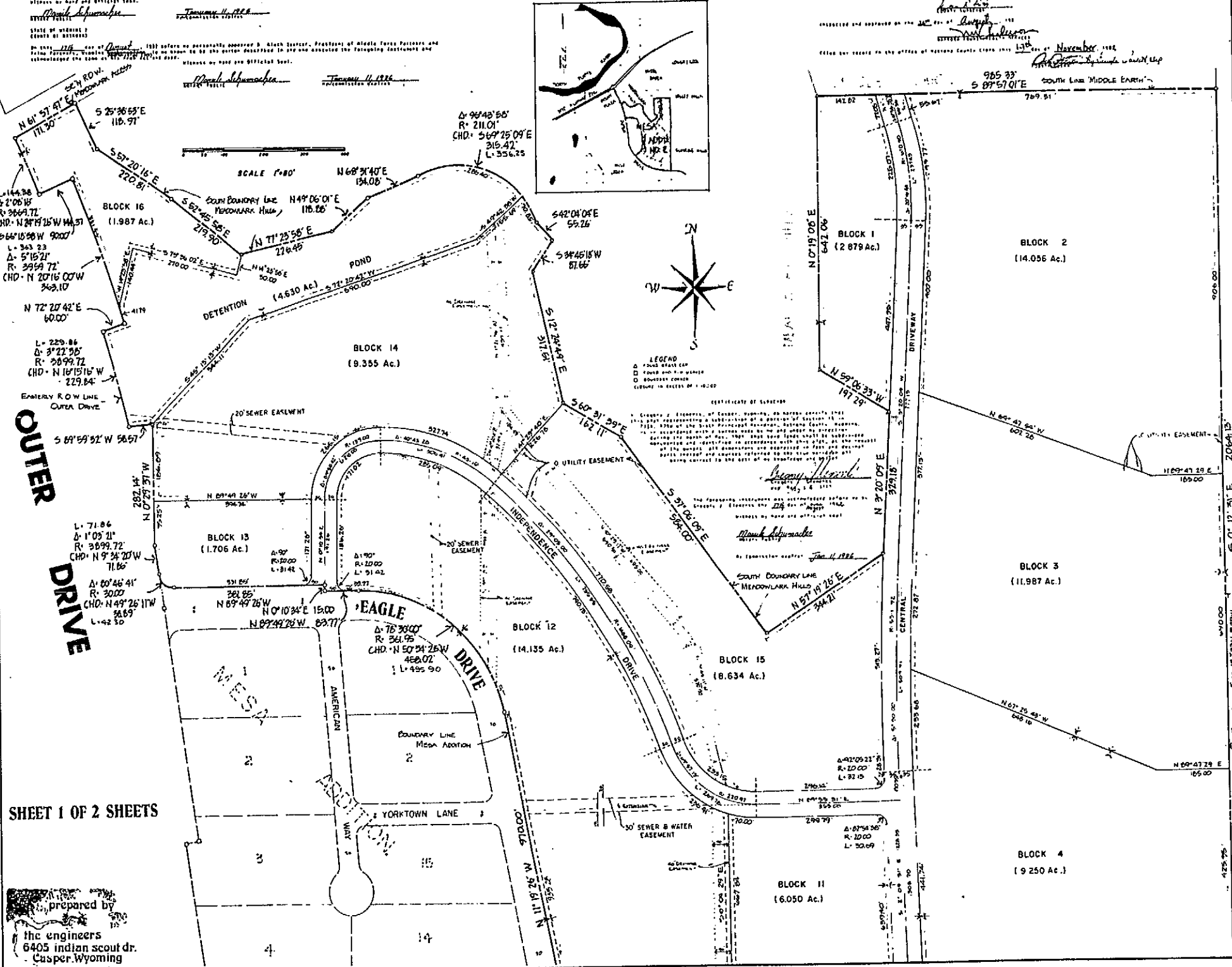
My commission expires _____

Notary Public

APPROVED BY THE COMMONS PLANNING COMMISSION OF CASPER, WYOMING, THIS 12th day of September, 1982, and forwarded to the City Council of Casper, Wyoming, with a recommendation that the plat be approved.

APPROVED BY THE BOARD OF HEALTH COMMISSIONERS OF NATRONA COUNTY, WYOMING, REPRESENTATION DATE BEING OF THE 12th day of September, 1982.

APPROVED AND ORDERED BY THE CLERK OF NATRONA COUNTY, WYOMING, THIS 12th day of September, 1982.



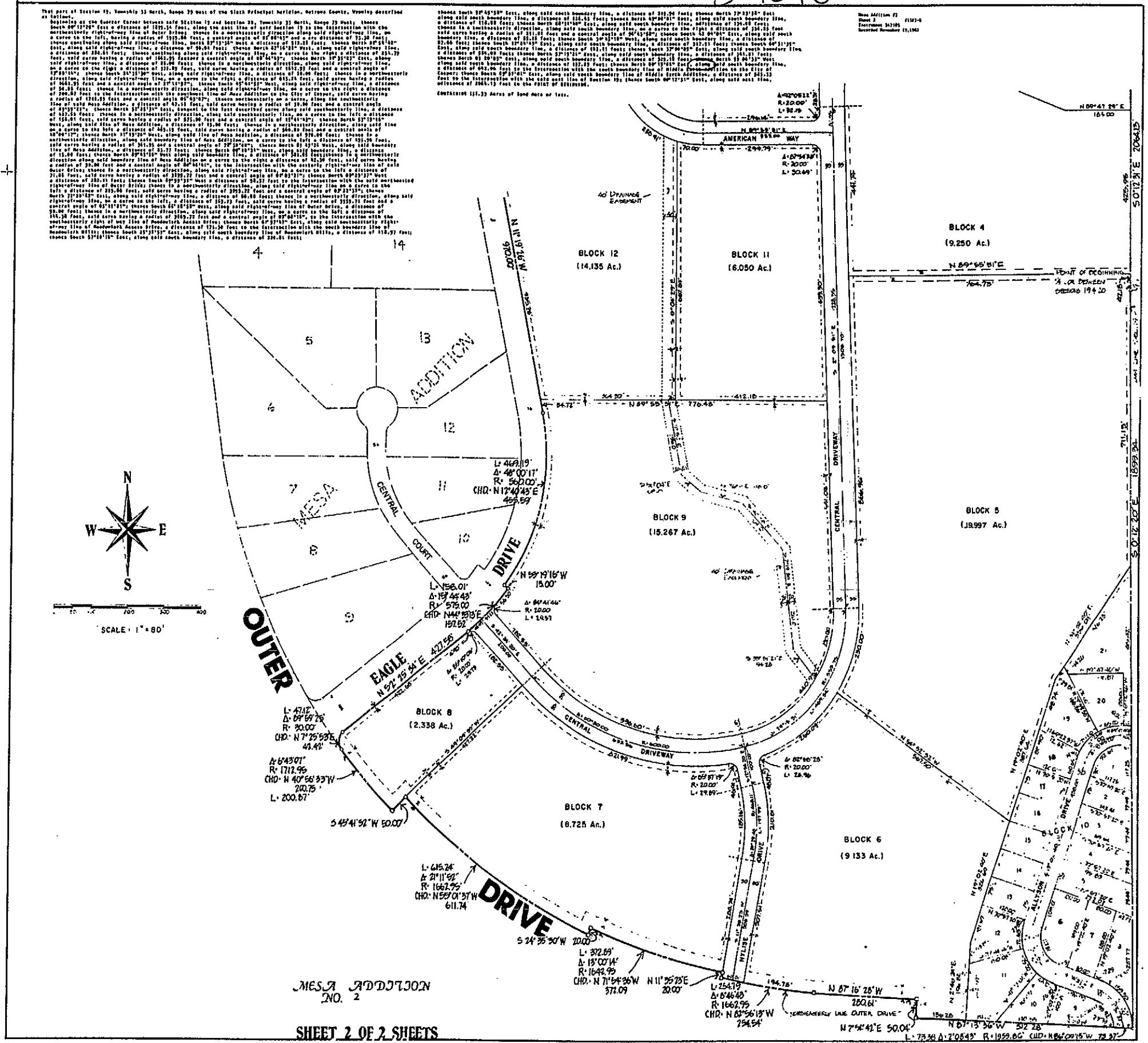
SHEET 1 OF 2 SHEETS

prepared by
 the engineers
 6405 Indian Scout Dr.
 Casper, Wyoming

342105

342105

#1322B



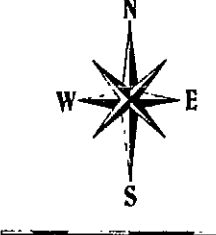
That part of Section 13, Township 33 North, Range 75 West of the Black Pine Initial Meridian, Outcrop County, Wyoming described as follows:

Beginning at the Quarter Corner between said Section 13 and Section 20, Township 33 North, Range 75 West; thence South 00°12'00" East a distance of 125.14 feet; along the west line of said Section 13 to the intersection with the northwesterly right-of-way line of Deer Bridge; thence in a northwesterly direction along said right-of-way line, on a curve to the left, having a radius of 1071.26 feet and a central angle of 88°47'00", a distance of 23.20 feet; thence continuing along said right-of-way line, South 37°13'24" West a distance of 121.24 feet; thence North 37°13'24" East, along said right-of-way line, a distance of 59.83 feet; thence North 27°16'13" West, along said right-of-way line, a distance of 120.14 feet; thence continuing along said right-of-way line, on a curve to the left, having a radius of 231.79 feet, said curve having a radius of 1841.23 feet and a central angle of 88°56'43"; thence North 37°33'23" East, along said right-of-way line, a distance of 21.00 feet; thence in a northwesterly direction, along said right-of-way line, on a curve to the left, having a radius of 1111.23 feet and a central angle of 17°04'18"; thence South 24°15'30" East, along said right-of-way line, a distance of 48.00 feet; thence in a northwesterly direction, along said right-of-way line, on a curve to the right, having a radius of 433.24 feet, said curve having a radius of 2642.95 feet and a central angle of 37°11'37"; thence North 49°52'57" West, along said right-of-way line, a distance of 54.81 feet; thence in a northwesterly direction, along said right-of-way line, on a curve to the right, having a radius of 200.83 feet and a central angle of 12°11'17"; thence South 28°11'17" West, along said right-of-way line, a distance of 200.83 feet to the intersection with the west line of Mesa Addition; thence along the south boundary line of Mesa Addition, a distance of 43.31 feet, said curve having a radius of 39.00 feet and a central angle of 87°52'57"; thence North 17°15'31" East, toward the east described curve along said northwesterly line, a distance of 154.91 feet; thence in a northwesterly direction, along said northwesterly line, on a curve to the left, having a radius of 154.91 feet, said curve having a radius of 521.00 feet and a central angle of 101°47'48"; thence North 37°13'24" West, along said line of Mesa Addition, a distance of 43.00 feet; thence in a northwesterly direction, along said line on a curve to the left, having a radius of 449.12 feet, said curve having a radius of 564.29 feet and a central angle of 10°50'17"; thence North 37°43'24" West, along said line of Mesa Addition, a distance of 378.80 feet; thence in a northwesterly direction, along said line of Mesa Addition, a distance of 43.00 feet; thence in a northwesterly direction, along said line on a curve to the left, having a radius of 361.35 feet and a central angle of 27°37'41"; thence North 83°17'24" West, along said boundary line of Mesa Addition, a distance of 43.77 feet; thence North 89°18'11" West, along said boundary line, a distance of 15.00 feet; thence North 37°13'24" West, along said boundary line, a distance of 41.62 feet; thence North 37°13'24" West, along said boundary line of Mesa Addition, on a curve to the right, having a radius of 42.26 feet, said curve having a radius of 250.00 feet and a central angle of 60°48'16"; to the intersection with the westerly right-of-way line of Deer Bridge; thence in a northwesterly direction, along said right-of-way line, on a curve to the left, having a radius of 714.67 feet, said curve having a radius of 3136.22 feet and a central angle of 89°07'21"; thence North 89°07'21" West a distance of 134.11 feet; thence South 28°11'17" West a distance of 24.27 feet to the intersection with the said northwesterly right-of-way line of Deer Bridge; thence in a northwesterly direction, along said right-of-way line, on a curve to the left, having a radius of 313.84 feet, said curve having a radius of 2293.22 feet and a central angle of 87°21'31"; thence North 27°29'12" East, along said right-of-way line, a distance of 60.80 feet; thence in a northwesterly direction, along said right-of-way line, on a curve to the left, having a radius of 50.80 feet, said curve having a radius of 323.73 feet and a central angle of 45°11'01"; thence South 26°18'18" West, along said right-of-way line of Deer Bridge, a distance of 24.00 feet; thence in a northwesterly direction, along said right-of-way line, on a curve to the left, having a radius of 346.24 feet, said curve having a radius of 2189.27 feet and a central angle of 87°48'16"; to the intersection with the northwesterly right-of-way line of Mesa Addition; thence along said right-of-way line, on a curve to the left, having a radius of 466.24 feet and a central angle of 37°13'24"; thence South 27°16'13" West, along said south boundary line, a distance of 120.81 feet;

thence South 27°16'13" East, along said south boundary line, a distance of 311.24 feet; thence North 77°33'23" East, along said south boundary line, a distance of 121.43 feet; thence North 09°04'51" East, along said south boundary line, a distance of 124.08 feet; thence in a northwesterly direction, along said south boundary line, on a curve to the right, having a radius of 231.21 feet, said curve having a radius of 211.11 feet and a central angle of 27°43'28"; thence South 43°04'51" East, along said south boundary line, a distance of 42.12 feet; thence South 30°43'11" West, along said south boundary line, a distance of 327.37 feet; thence South 60°51'17" East, along said south boundary line, a distance of 101.11 feet; thence South 37°04'05" East, along said south boundary line, a distance of 246.03 feet; thence North 37°13'24" East, along said south boundary line, a distance of 341.21 feet; thence North 01°20'31" East, along said south boundary line, a distance of 321.11 feet; thence South 37°13'24" East, along said south boundary line, a distance of 321.11 feet; thence North 09°04'51" East, along said south boundary line, a distance of 442.00 feet to the intersection with the south boundary line of Mesa Addition; thence in a northwesterly direction, along said south boundary line, a distance of 122.29 feet; thence North 09°04'51" East, along said south boundary line, a distance of 565.33 feet to the intersection with the said east line of Section 13; thence South 00°12'00" East, along said east line, a distance of 386.13 feet to the POINT OF BEGINNING.

CONTAINING 131.33 Acres of Land More or Less.

Plan Addition #1
 Sheet 2
 Instrument 24128
 Recorded November 17, 1982



SCALE: 1" = 80'

MESA ADDITION
 NO. 2

SHEET 2 OF 2 SHEETS