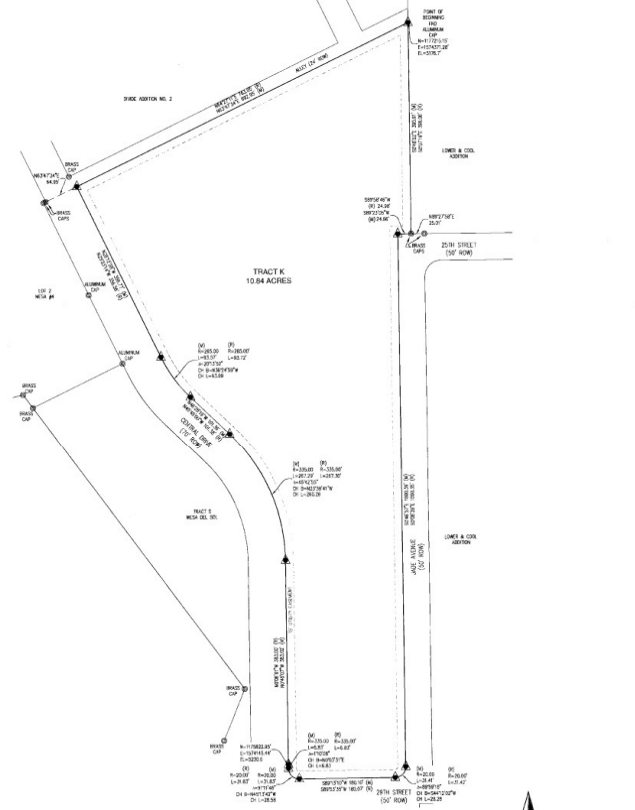
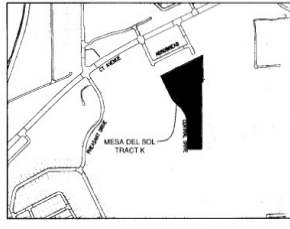


CERTIFICATE OF DEDICATION

6/17/2020 11:45:58 AM HATTON COUNTY CLERK  
Page: 4 of 4  
1083148  
PLAT NO. 1083148  
COUNTY OF HATTON

THE UNDERSIGNED, MESA DEL SOL, L.L.C., SOLE MEMBER ENTITY, THAT THEY ARE THE OWNER AND PROPRIETORS OF THE FOLLOWING DESCRIBED MINOR BOUNDARY ADJUSTMENT PLAT LOCATED ON NEWLY CONFIGURED LOT WITHIN THE AMENDED PLAT OF MESA DEL SOL ADDITION, CITY OF CASPER, WYOMING (REFERRED TO AS "2019 INSTRUMENT NO. 00484") TO BE REDESIGNED AS TRACT E, TRACT F, TRACT G, TRACT H, TRACT I, TRACT J, TRACT K, TRACT L, TRACT M, TRACT N, TRACT O, TRACT P, TRACT Q, TRACT R, TRACT S, TRACT T, TRACT U, TRACT V, TRACT W, TRACT X, TRACT Y, TRACT Z, TRACT AA, TRACT AB, TRACT AC, TRACT AD, TRACT AE, TRACT AF, TRACT AG, TRACT AH, TRACT AI, TRACT AJ, TRACT AK, TRACT AL, TRACT AM, TRACT AN, TRACT AO, TRACT AP, TRACT AQ, TRACT AR, TRACT AS, TRACT AT, TRACT AU, TRACT AV, TRACT AW, TRACT AX, TRACT AY, TRACT AZ, TRACT BA, TRACT BB, TRACT BC, TRACT BD, TRACT BE, TRACT BF, TRACT BG, TRACT BH, TRACT BI, TRACT BJ, TRACT BK, TRACT BL, TRACT BM, TRACT BN, TRACT BO, TRACT BP, TRACT BQ, TRACT BR, TRACT BS, TRACT BT, TRACT BU, TRACT BV, TRACT BW, TRACT BX, TRACT BY, TRACT BZ, TRACT CA, TRACT CB, TRACT CC, TRACT CD, TRACT CE, TRACT CF, TRACT CG, TRACT CH, TRACT CI, TRACT CJ, TRACT CK, TRACT CL, TRACT CM, TRACT CN, TRACT CO, TRACT CP, TRACT CQ, TRACT CR, TRACT CS, TRACT CT, TRACT CU, TRACT CV, TRACT CW, TRACT CX, TRACT CY, TRACT CZ, TRACT DA, TRACT DB, TRACT DC, TRACT DD, TRACT DE, TRACT DF, TRACT DG, TRACT DH, TRACT DI, TRACT DJ, TRACT DK, TRACT DL, TRACT DM, TRACT DN, TRACT DO, TRACT DP, TRACT DQ, TRACT DR, TRACT DS, TRACT DT, TRACT DU, TRACT DV, TRACT DW, TRACT DX, TRACT DY, TRACT DZ, TRACT EA, TRACT EB, TRACT EC, TRACT ED, TRACT EE, TRACT EF, TRACT EG, TRACT EH, TRACT EI, TRACT EJ, TRACT EK, TRACT EL, TRACT EM, TRACT EN, TRACT EO, TRACT EP, TRACT EQ, TRACT ER, TRACT ES, TRACT ET, TRACT EU, TRACT EV, TRACT EW, TRACT EX, TRACT EY, TRACT EZ, TRACT FA, TRACT FB, TRACT FC, TRACT FD, TRACT FE, TRACT FF, TRACT FG, TRACT FH, TRACT FI, TRACT FJ, TRACT FK, TRACT FL, TRACT FM, TRACT FN, TRACT FO, TRACT FP, TRACT FQ, TRACT FR, TRACT FS, TRACT FT, TRACT FU, TRACT FV, TRACT FW, TRACT FX, TRACT FY, TRACT FZ, TRACT GA, TRACT GB, TRACT GC, TRACT GD, TRACT GE, TRACT GF, TRACT GG, TRACT GH, TRACT GI, TRACT GJ, TRACT GK, TRACT GL, TRACT GM, TRACT GN, TRACT GO, TRACT GP, TRACT GQ, TRACT GR, TRACT GS, TRACT GT, TRACT GU, TRACT GV, TRACT GW, TRACT GX, TRACT GY, TRACT GZ, TRACT HA, TRACT HB, TRACT HC, TRACT HD, TRACT HE, TRACT HF, TRACT HG, TRACT HH, TRACT HI, TRACT HJ, TRACT HK, TRACT HL, TRACT HM, TRACT HN, TRACT HO, TRACT HP, TRACT HQ, TRACT HR, TRACT HS, TRACT HT, TRACT HU, TRACT HV, TRACT HW, TRACT HX, TRACT HY, TRACT HZ, TRACT IA, TRACT IB, TRACT IC, TRACT ID, TRACT IE, TRACT IF, TRACT IG, TRACT IH, TRACT II, TRACT IJ, TRACT IK, TRACT IL, TRACT IM, TRACT IN, TRACT IO, TRACT IP, TRACT IQ, TRACT IR, TRACT IS, TRACT IT, TRACT IU, TRACT IV, TRACT IW, TRACT IX, TRACT IY, TRACT IZ, TRACT JA, TRACT JB, TRACT JC, TRACT JD, TRACT JE, TRACT JF, TRACT JG, TRACT JH, TRACT JI, TRACT JJ, TRACT JK, TRACT JL, TRACT JM, TRACT JN, TRACT JO, TRACT JP, TRACT JQ, TRACT JR, TRACT JS, TRACT JT, TRACT JU, TRACT JV, TRACT JW, TRACT JX, TRACT JY, TRACT JZ, TRACT KA, TRACT KB, TRACT KC, TRACT KD, TRACT KE, TRACT KF, TRACT KG, TRACT KH, TRACT KI, TRACT KJ, TRACT KK, TRACT KL, TRACT KM, TRACT KN, TRACT KO, TRACT KP, TRACT KQ, TRACT KR, TRACT KS, TRACT KT, TRACT KU, TRACT KV, TRACT KW, TRACT KX, TRACT KY, TRACT KZ, TRACT LA, TRACT LB, TRACT LC, TRACT LD, TRACT LE, TRACT LF, TRACT LG, TRACT LH, TRACT LI, TRACT LJ, TRACT LK, TRACT LL, TRACT LM, TRACT LN, TRACT LO, TRACT LP, TRACT LQ, TRACT LR, TRACT LS, TRACT LT, TRACT LU, TRACT LV, TRACT LW, TRACT LX, TRACT LY, TRACT LZ, TRACT MA, TRACT MB, TRACT MC, TRACT MD, TRACT ME, TRACT MF, TRACT MG, TRACT MH, TRACT MI, TRACT MJ, TRACT MK, TRACT ML, TRACT MM, TRACT MN, TRACT MO, TRACT MP, TRACT MQ, TRACT MR, TRACT MS, TRACT MT, TRACT MU, TRACT MV, TRACT MW, TRACT MX, TRACT MY, TRACT MZ, TRACT NA, TRACT NB, TRACT NC, TRACT ND, TRACT NE, TRACT NF, TRACT NG, TRACT NH, TRACT NI, TRACT NJ, TRACT NK, TRACT NL, TRACT NM, TRACT NN, TRACT NO, TRACT NP, TRACT NQ, TRACT NR, TRACT NS, TRACT NT, TRACT NU, TRACT NV, TRACT NW, TRACT NX, TRACT NY, TRACT NZ, TRACT OA, TRACT OB, TRACT OC, TRACT OD, TRACT OE, TRACT OF, TRACT OG, TRACT OH, TRACT OI, TRACT OJ, TRACT OK, TRACT OL, TRACT OM, TRACT ON, TRACT OO, TRACT OP, TRACT OQ, TRACT OR, TRACT OS, TRACT OT, TRACT OU, TRACT OV, TRACT OW, TRACT OX, TRACT OY, TRACT OZ, TRACT PA, TRACT PB, TRACT PC, TRACT PD, TRACT PE, TRACT PF, TRACT PG, TRACT PH, TRACT PI, TRACT PJ, TRACT PK, TRACT PL, TRACT PM, TRACT PN, TRACT PO, TRACT PP, TRACT PQ, TRACT PR, TRACT PS, TRACT PT, TRACT PU, TRACT PV, TRACT PW, TRACT PX, TRACT PY, TRACT PZ, TRACT QA, TRACT QB, TRACT QC, TRACT QD, TRACT QE, TRACT QF, TRACT QG, TRACT QH, TRACT QI, TRACT QJ, TRACT QK, TRACT QL, TRACT QM, TRACT QN, TRACT QO, TRACT QP, TRACT QQ, TRACT QR, TRACT QS, TRACT QT, TRACT QU, TRACT QV, TRACT QW, TRACT QX, TRACT QY, TRACT QZ, TRACT RA, TRACT RB, TRACT RC, TRACT RD, TRACT RE, TRACT RF, TRACT RG, TRACT RH, TRACT RI, TRACT RJ, TRACT RK, TRACT RL, TRACT RM, TRACT RN, TRACT RO, TRACT RP, TRACT RQ, TRACT RR, TRACT RS, TRACT RT, TRACT RU, TRACT RV, TRACT RW, TRACT RX, TRACT RY, TRACT RZ, TRACT SA, TRACT SB, TRACT SC, TRACT SD, TRACT SE, TRACT SF, TRACT SG, TRACT SH, TRACT SI, TRACT SJ, TRACT SK, TRACT SL, TRACT SM, TRACT SN, TRACT SO, TRACT SP, TRACT SQ, TRACT SR, TRACT SS, TRACT ST, TRACT SU, TRACT SV, TRACT SW, TRACT SX, TRACT SY, TRACT SZ, TRACT TA, TRACT TB, TRACT TC, TRACT TD, TRACT TE, TRACT TF, TRACT TG, TRACT TH, TRACT TI, TRACT TJ, TRACT TK, TRACT TL, TRACT TM, TRACT TN, TRACT TO, TRACT TP, TRACT TQ, TRACT TR, TRACT TS, TRACT TT, TRACT TU, TRACT TV, TRACT TW, TRACT TX, TRACT TY, TRACT TZ, TRACT UA, TRACT UB, TRACT UC, TRACT UD, TRACT UE, TRACT UF, TRACT UG, TRACT UH, TRACT UI, TRACT UJ, TRACT UK, TRACT UL, TRACT UM, TRACT UN, TRACT UO, TRACT UP, TRACT UQ, TRACT UR, TRACT US, TRACT UT, TRACT UY, TRACT UZ, TRACT VA, TRACT VB, TRACT VC, TRACT VD, TRACT VE, TRACT VF, TRACT VG, TRACT VH, TRACT VI, TRACT VJ, TRACT VK, TRACT VL, TRACT VM, TRACT VN, TRACT VO, TRACT VP, TRACT VQ, TRACT VR, TRACT VS, TRACT VT, TRACT VY, TRACT VZ, TRACT WA, TRACT WB, TRACT WC, TRACT WD, TRACT WE, TRACT WF, TRACT WG, TRACT WH, TRACT WI, TRACT WJ, TRACT WK, TRACT WL, TRACT WM, TRACT WN, TRACT WO, TRACT WP, TRACT WQ, TRACT WR, TRACT WS, TRACT WT, TRACT WY, TRACT WZ, TRACT XA, TRACT XB, TRACT XC, TRACT XD, TRACT XE, TRACT XF, TRACT XG, TRACT XH, TRACT XI, TRACT XJ, TRACT XK, TRACT XL, TRACT XM, TRACT XN, TRACT XO, TRACT XP, TRACT XQ, TRACT XR, TRACT XS, TRACT XT, TRACT XU, TRACT XV, TRACT XW, TRACT XX, TRACT XY, TRACT XZ, TRACT YA, TRACT YB, TRACT YC, TRACT YD, TRACT YE, TRACT YF, TRACT YG, TRACT YH, TRACT YI, TRACT YJ, TRACT YK, TRACT YL, TRACT YM, TRACT YN, TRACT YO, TRACT YP, TRACT YQ, TRACT YR, TRACT YS, TRACT YT, TRACT YU, TRACT YV, TRACT YW, TRACT YX, TRACT YZ, TRACT ZA, TRACT ZB, TRACT ZC, TRACT ZD, TRACT ZE, TRACT ZF, TRACT ZG, TRACT ZH, TRACT ZI, TRACT ZJ, TRACT ZK, TRACT ZL, TRACT ZM, TRACT ZN, TRACT ZO, TRACT ZP, TRACT ZQ, TRACT ZR, TRACT ZS, TRACT ZT, TRACT ZU, TRACT ZV, TRACT ZW, TRACT ZX, TRACT ZY, TRACT ZZ



APPROVALS  
APPROVED BY THE CITY OF CASPER COMMUNITY DEVELOPMENT DIRECTOR THE 17th DAY OF June 2020  
*Liz Becker*  
COMMUNITY DEVELOPMENT DIRECTOR  
INSPECTED AND APPROVED THIS 17th DAY OF June 2020  
*James [Signature]*  
CITY ENGINEER

NOTES  
1. ERROR OF CLOSURE EXCEEDS 1:800000.  
2. BASED OF BEARINGS IS THE WYOMING STATE PLANE COORDINATE SYSTEM, EAST CENTRAL ZONE, NAD 83 (2011).  
3. THE CONFORMANCE ANGLE AT THE POINT OF BEGINNING IS 0.0236537', AND THE CORRECTED FACTOR IS 1.0000000.  
4. ALL DIMENSIONS ARE IN FEET.  
5. DIMENSIONS SHOWN HEREON ARE BASED ON NAVD 83 DATUM AND ARE NOT MEANT TO BE USED AS BENCHMARKS.

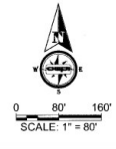
CERTIFICATE OF SURVEYOR  
STATE OF WYOMING } SS  
COUNTY OF HATTON }  
I, WILLIAM R. FEHRENER, A REGISTERED PROFESSIONAL LAND SURVEYOR, LICENSE NO. 5224, DO HEREBY CERTIFY THAT THIS PLAT AND THE FIELD NOTES HEREON ARE AN ACCURATE AND TRUTHFUL REPRESENTATION OF THE SURVEY AND THAT THIS PLAT TO THE BEST OF MY KNOWLEDGE AND BELIEF CORRECTLY AND ACCURATELY REPRESENTS SAID SURVEY. ALL DIMENSIONS ARE EXPRESSED IN FEET AND DECIMAL THEREOF AND CORRECTIONS REQUIRED TO THE TRUE MERRIAM. ALL BEING TRUE AND CORRECT TO THE BEST OF MY KNOWLEDGE AND BELIEF.  
WILLIAM R. FEHRENER  
REGISTERED PROFESSIONAL LAND SURVEYOR  
No. 5224  
WYOMING  
I, JOHN JOHNSON, HATTON COUNTY CLERK, DO HEREBY CERTIFY THAT THIS PLAT WAS FILED IN MY OFFICE ON THE 17th DAY OF JUNE, 2020.  
JOHN JOHNSON  
HATTON COUNTY CLERK

THE FOREGOING INSTRUMENT WAS ACKNOWLEDGED BEFORE ME BY JOHN JOHNSON, HATTON COUNTY CLERK OF HATTON COUNTY, WYOMING, AND WYOMING MEMBER OF MESA DEL SOL, L.L.C. THIS 17th DAY OF June 2020.  
WITNESS MY HAND AND OFFICIAL SEAL MY COMMISSION EXPIRES 5-29-24  
*Scott [Signature]*  
NOTARY PUBLIC  
STATE OF WYOMING

THE FOREGOING INSTRUMENT WAS ACKNOWLEDGED BEFORE ME BY JOHN JOHNSON, HATTON COUNTY CLERK OF HATTON COUNTY, WYOMING, AND WYOMING MEMBER OF MESA DEL SOL, L.L.C. THIS 17th DAY OF June 2020.  
WITNESS MY HAND AND OFFICIAL SEAL MY COMMISSION EXPIRES 5-29-24  
*Scott [Signature]*  
NOTARY PUBLIC  
STATE OF WYOMING

MINOR BOUNDARY ADJUSTMENT OF TRACTS E AND F AMENDED PLAT OF MESA DEL SOL ADDITION AS AMENDED PLAT OF THE MESA DEL SOL ADDITION, TRACT K TO THE CITY OF CASPER, WYOMING

A MINOR BOUNDARY ADJUSTMENT OF TRACTS E AND F OF THE AMENDED PLAT OF THE MESA DEL SOL ADDITION TO CREATE ONE NEWLY CONFIGURED LOT WITHIN THE AMENDED PLAT OF THE MESA DEL SOL ADDITION, DESIGNATED AS AMENDED PLAT OF THE MESA DEL SOL ADDITION, TRACT K, BEING AN ADDITION TO THE CITY OF CASPER, WYOMING BEING A PORTION OF THE NE1/4 AND THE SE1/4 OF SECTION 27 T32N, R30W, 6TH PM, NATIONAL COUNTY WYOMING  
W08-000-109



LEGEND  
● SET BRASS CAP  
● SET MONUMENT 5/8" HD BRASS & ALLUMINUM CAP  
○ FOUND MONUMENT AS NOTED