

CERTIFICATE OF DEDICATION

STATE OF WYOMING }
COUNTY OF NATRONA }

THE UNDERSIGNED, JERRY C. COVER, DOES HEREBY CERTIFY THAT HE IS THE OWNER AND PROPRIETOR OF THE FOLLOWING DESCRIBED PARCEL OF LAND SITUATE WITHIN A PORTION OF SECTION 3, T.33N., R.80W., S.17M., NATRONA COUNTY, WYOMING, ALSO KNOWN AS LOT 2, MOUNTAIN HORIZON NO. 2 SIMPLE SUBDIVISION, BEING MORE PARTICULARLY DESCRIBED AS FOLLOWS:

COMMENCING AT THE S-W/4 CORNER OF SAID SECTION 3, MONUMENTED BY AN IRON PIPE, BEING THE SOUTHWEST CORNER OF THE PARCEL AND THE POINT OF BEGINNING;

THENCE N02°21'37"W, ALONG THE WEST LINE OF SAID LOT 2, MOUNTAIN HORIZON NO. 2 SIMPLE SUBDIVISION, A DISTANCE OF 675.00 FEET TO THE NORTHWEST CORNER OF THE PARCEL, ALSO BEING THE SOUTHWEST CORNER OF LOT 1, MOUNTAIN HORIZON NO. 2, MONUMENTED BY AN ALUMINUM CAP;

THENCE N87°33'28"W, ALONG THE SOUTH LINE OF SAID LOT 2, AND THE SOUTH LINE OF SAID LOT 1, MOUNTAIN HORIZON NO. 2, A DISTANCE OF 1000 FEET TO THE SOUTHEAST CORNER OF SAID LOT 2, MONUMENTED BY AN ALUMINUM CAP WITNESS CORNER LOCATED 500.00 FEET TO THE SOUTHWEST CORNER OF SAID LOT 2;

THENCE N02°21'37"W, ALONG THE WEST LINE OF SAID LOT 2, AND THE EAST LINE OF SAID LOT 1, MOUNTAIN HORIZON NO. 2, A DISTANCE OF 799.00 FEET TO A CORNER MONUMENTED BY AN ALUMINUM CAP;

THENCE N45°21'30"E, ALONG THE NORTHERLY LINE OF SAID LOT 2, AND THE SOUTHERLY LINE OF SAID LOT 1, MOUNTAIN HORIZON NO. 2, A DISTANCE OF 308.85 FEET TO A CORNER MONUMENTED BY AN ALUMINUM CAP;

THENCE N45°21'30"E, ALONG THE WESTERLY LINE OF SAID LOT 2, AND THE EASTERLY LINE OF SAID LOT 1, MOUNTAIN HORIZON NO. 2, A DISTANCE OF 125.00 FEET TO A CORNER MONUMENTED BY AN ALUMINUM CAP;

THENCE N45°21'30"E, ALONG THE NORTHERLY LINE OF SAID LOT 2, AND THE SOUTHERLY LINE OF SAID LOT 1, MOUNTAIN HORIZON NO. 2, A DISTANCE OF 50 FEET TO THE ACTUAL CORNER LOCATION;

THENCE N45°21'30"E, ALONG THE WESTERLY LINE OF SAID LOT 2, AND THE EASTERLY LINE OF SAID LOT 1, MOUNTAIN HORIZON NO. 2, AND A CURVE TO THE LEFT HAVING A RADIUS OF 1000.00 FEET, THROUGH A CENTRAL ANGLE OF 54°27'55", A DISTANCE OF 50.06 FEET, WITH A CHORD BEARING OF N26°35'30"E, A DISTANCE OF 91.52 FEET TO THE END OF CURVE, MONUMENTED BY A BRASS CAP WITNESS CORNER LOCATED 482228.72, A DISTANCE OF 10 FEET FROM THE ACTUAL CORNER LOCATION;

THENCE N00°37'00"W, ALONG THE WEST LINE OF SAID LOT 2, MOUNTAIN HORIZON NO. 2, AND THE CENTER LINE OF SAID BRIGGATION CANAL, A DISTANCE OF 507.16 FEET TO A POINT LOCATED ON THE NORTH LINE OF SAID SECTION 3, AND THE CENTER LINE OF ZERO ROAD, MONUMENTED BY A BRASS CAP WITNESS CORNER LOCATED 33 FEET S00°27'00"E OF THE ACTUAL CORNER;

THENCE N02°21'37"E, ALONG THE NORTH LINE OF SAID SECTION 3, AND THE CENTER LINE OF ZERO ROAD, A DISTANCE OF 364.83 FEET TO A POINT MONUMENTED BY A BRASS CAP LOCATED 13 FEET S00°24'23"E OF THE ACTUAL CORNER;

THENCE S00°24'23"E, A DISTANCE OF 358.90 FEET TO A POINT MONUMENTED BY A BRASS CAP;

THENCE S00°24'23"E, ALONG THE EAST LINE OF SAID LOT 2, MOUNTAIN HORIZON NO. 2, A DISTANCE OF 2240.23 FEET TO THE SOUTHEAST CORNER OF THE PARCEL, ALSO BEING THE C/4 CORNER OF SAID SECTION 3, MONUMENTED BY A BRASS CAP;

THENCE S89°24'47"W, ALONG THE SOUTH LINE OF THE PARCEL, A DISTANCE OF 1122.31 FEET TO THE POINT OF BEGINNING.

THE ABOVE DESCRIBED TRACT OF LAND CONTAINS 50.41 ACRES, MORE OR LESS, AND IS SUBJECT TO ANY RIGHTS-OF-WAY AND/OR EASEMENTS RESERVATIONS AND ENCUMBRANCES WHICH HAVE BEEN LEGALLY ACQUIRED.

THE TRACT OF LAND, AS IT APPEARS ON THIS PLAT, IS PRECATED WITH THE FREE CONSENT AND IN ACCORDANCE WITH THE DESIRES OF THE UNDERSIGNED OWNERS AND PROPRIETORS. THE PLAT OF THE SIMPLE SUBDIVISION SHALL BE "MOUNTAIN HORIZON NO. 2 SIMPLE SUBDIVISION" AND THE OWNER HEREBY GRANTS TO THE PUBLIC AND PRIVATE UTILITY COMPANIES AN EASEMENT AND LICENSE TO LOCATE, CONSTRUCT, USE AND MAINTAIN CONCRETE LINES, WIRES AND PIPES, ANY OR ALL OF THEM, UNDER AND ALONG THE STRIPS OF LAND MARKED "UTILITY EASEMENTS" AS SHOWN ON THIS PLAT. ALL ROADS AS SHOWN HEREON ARE PRIVATE ROADS. THERE WILL BE NO PUBLIC MAINTENANCE OF ROADS.

JERRY C. COVER - OWNER

THE FOREGOING INSTRUMENT WAS ACKNOWLEDGED BEFORE ME BY JERRY C. COVER THIS 15th DAY OF July, 2012.

WITNESS MY HAND AND OFFICIAL SEAL, MY COMMISSION EXPIRES 1/1/13.

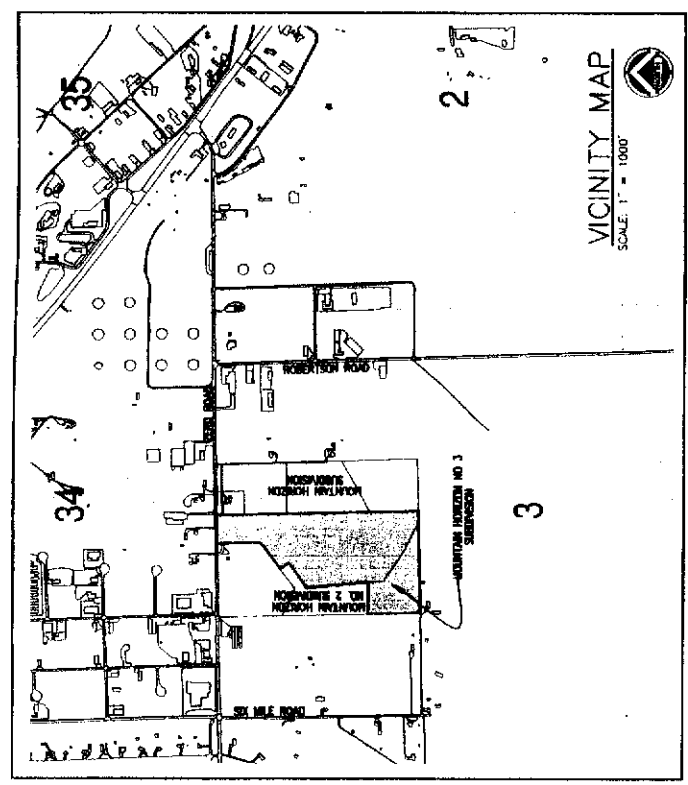
SAMI FAUBER
Notary Public
Natrona County, Wyoming
My Commission Expires 1/1/13

NOTARY PUBLIC

VACATION AND REPLAT OF
LOT 2, MOUNTAIN HORIZON NO. 2 SIMPLE SUBDIVISION
AS

**MOUNTAIN HORIZON NO. 3
SIMPLE SUBDIVISION**

BEING A PORTION OF
THE E1/2NW1/4 OF SECTION 3
T.33N., R.80W., S.17M.
NATRONA COUNTY WYOMING



VICINITY MAP
SCALE: 1" = 1000'



CERTIFICATE OF SURVEYOR
STATE OF WYOMING }
COUNTY OF NATRONA }

WILLIAM R. FERRINGER, A REGISTERED PROFESSIONAL LAND SURVEYOR, LICENSE NO. 5328, DO HEREBY CERTIFY THAT THIS PLAT IS A CORRECT AND ACCURATE REPRESENTATION OF THE SURVEY MADE UNDER MY DIRECT SUPERVISION IN JUNE, 2012, AND THAT THIS PLAT IS THE BEST OF MY KNOWLEDGE AND BELIEF, AND THAT THE INFORMATION AND DATA SHOWN ON THIS PLAT ARE CORRECT TO THE BEST OF MY KNOWLEDGE AND BELIEF.

THE FOREGOING INSTRUMENT WAS ACKNOWLEDGED BEFORE ME BY WILLIAM R. FERRINGER THIS 30th DAY OF July, 2012.

WITNESS MY HAND AND OFFICIAL SEAL, MY COMMISSION EXPIRES 1/1/13.

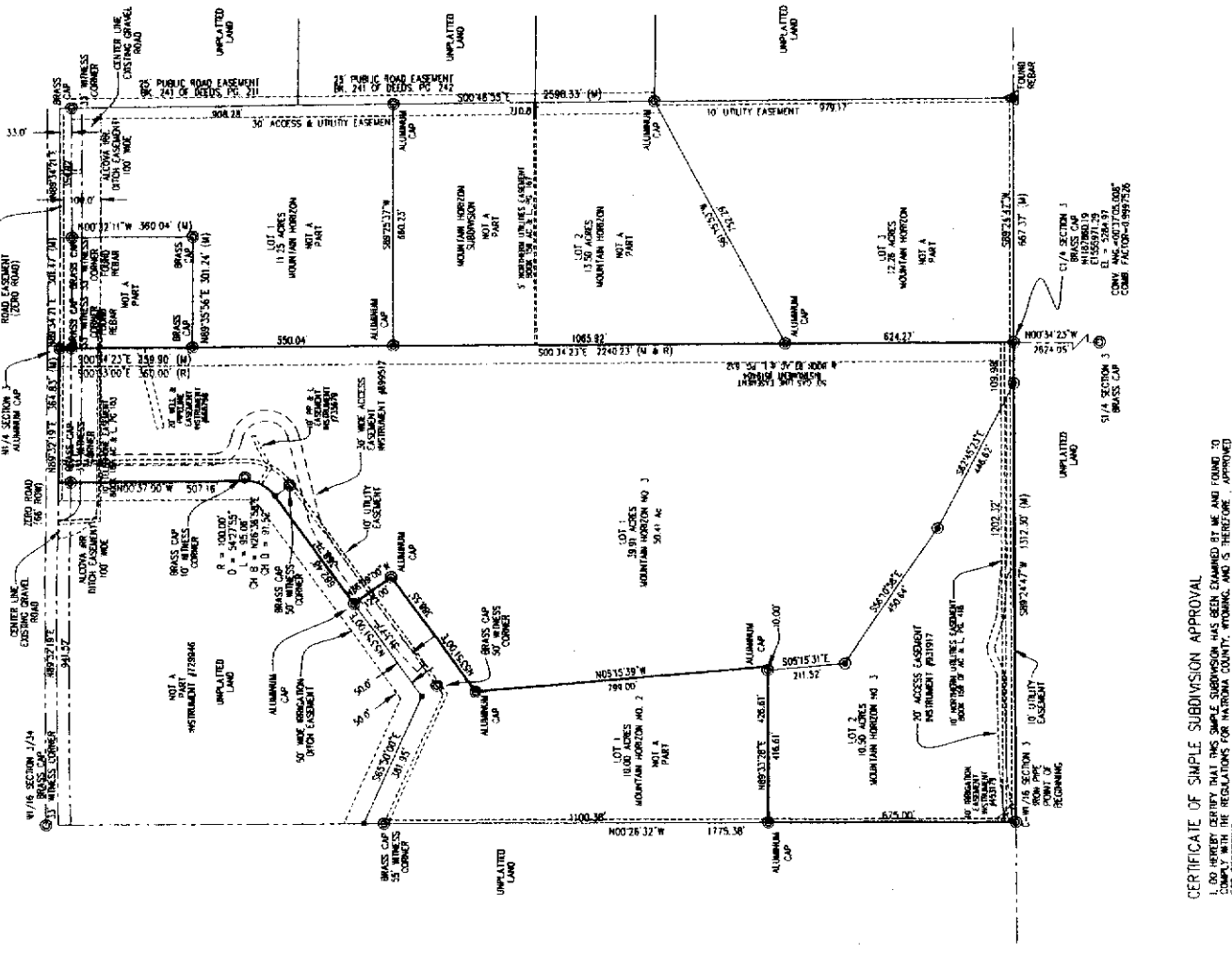
SAMI FAUBER
Notary Public
Natrona County, Wyoming
My Commission Expires 1/1/13

NOTARY PUBLIC

RECORDED
FILED FOR RECORD IN THE OFFICE OF THE COUNTY CLERK OF NATRONA COUNTY, WYOMING THIS 15th DAY OF August, 2012.

INSTRUMENT NO. 933093

NOTES:
1. ERROR OF CLOSURE EXCEEDS 1:1298,700
2. NO PUBLIC MAINTENANCE OF ROADS.
3. NO PUBLIC WATER SYSTEM.
4. NO PUBLIC SANITARY SEWER SYSTEM.



CERTIFICATE OF SIMPLE SUBDIVISION APPROVAL
I, JERRY C. COVER, COUNTY PLANNER, DO HEREBY CERTIFY THAT THIS SIMPLE SUBDIVISION HAS BEEN EXAMINED BY ME AND FOUND TO BE IN ACCORDANCE WITH THE REGULATIONS FOR NATRONA COUNTY, WYOMING, AND IS THEREFORE APPROVED FOR RECORDING.

JERRY C. COVER
COUNTY PLANNER/DATUM HEALTH OFFICER (DATE 7/11/12)

STATE OF WYOMING }
COUNTY OF NATRONA }

THE FOREGOING INSTRUMENT WAS ACKNOWLEDGED BEFORE ME BY WILLIAM R. FERRINGER THIS 30th DAY OF July, 2012.

WITNESS MY HAND AND OFFICIAL SEAL, MY COMMISSION EXPIRES 1/1/13.

SAMI FAUBER
Notary Public
Natrona County, Wyoming
My Commission Expires 1/1/13

NOTARY PUBLIC

RECORDED
FILED FOR RECORD IN THE OFFICE OF THE COUNTY CLERK OF NATRONA COUNTY, WYOMING THIS 15th DAY OF August, 2012.

INSTRUMENT NO. 933093

NOTES:
1. ERROR OF CLOSURE EXCEEDS 1:1298,700
2. NO PUBLIC MAINTENANCE OF ROADS.
3. NO PUBLIC WATER SYSTEM.
4. NO PUBLIC SANITARY SEWER SYSTEM.



CEPI Engineering Professionals, Inc.
4000 Enterprise Drive, Casper, WY 82409
Phone 307.556.4346 Fax 307.556.0108
www.cepi-casper.com