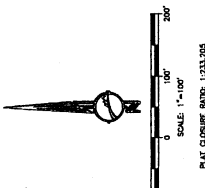
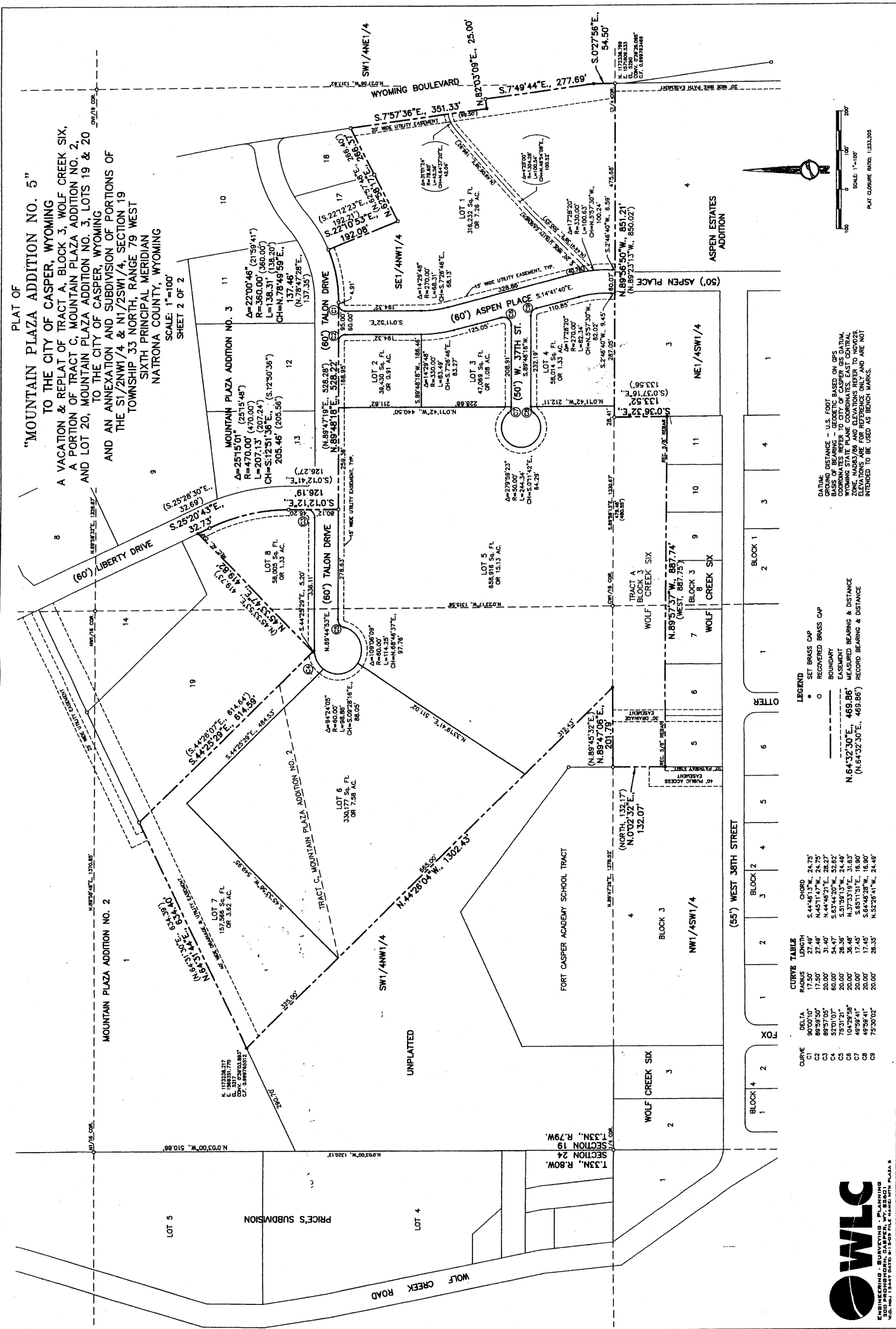


PLAT OF
"MOUNTAIN PLAZA ADDITION NO. 5"
 TO THE CITY OF CASPER, WYOMING
 A VACATION & REPLAT OF TRACT A, BLOCK 3, WOLF CREEK SIX,
 A PORTION OF TRACT C, MOUNTAIN PLAZA ADDITION NO. 2,
 AND LOT 20, MOUNTAIN PLAZA ADDITION NO. 3, LOTS 19 & 20
 TO THE CITY OF CASPER, WYOMING
 AND AN ANNEXATION AND SUBDIVISION OF PORTIONS OF
 THE S1/2NW1/4 & N1/2SW1/4, SECTION 19
 TOWNSHIP 33 NORTH, RANGE 79 WEST
 SIXTH PRINCIPAL MERIDIAN
 NATRONA COUNTY, WYOMING

SCALE: 1"=100'
 SHEET 2 OF 2



DATING DISTANCE - U.S. FOOT
 BASIS OF BEARING - GEODETIC BASED ON GPS
 COORDINATES REFER TO CITY OF CASPER GIS DATUM,
 ZONE 14N/83W AND ELEVATIONS REFER TO NAD83
 ELEVATIONS ARE FOR REFERENCE ONLY AND ARE NOT
 INTENDED TO BE USED AS BENCH MARKS.

LEGEND
 • SET BRASS CAP
 ○ RECOVERED BRASS CAP
 — BOUNDARY
 - - - EASEMENT
 N 64°32'30" E, 469.86'
 (N 64°32'30" E, 469.86') RECORD BEARING & DISTANCE

CURVES TABLE

CURVE	DELTA	RADIUS	LENGTH	CHORD
C1	90°00'00"	17.50'	27.49'	5.4448137"
C2	88°27'05"	20.00'	31.40'	5.4448137"
C3	88°27'05"	20.00'	31.40'	5.4448137"
C4	52°01'07"	60.00'	54.47'	5.5139137"
C5	75°31'21"	20.00'	28.36'	5.5139137"
C6	104°29'38"	20.00'	36.48'	5.5139137"
C7	49°59'41"	20.00'	17.45'	5.5139137"
C8	75°30'02"	20.00'	28.35'	5.5139137"

