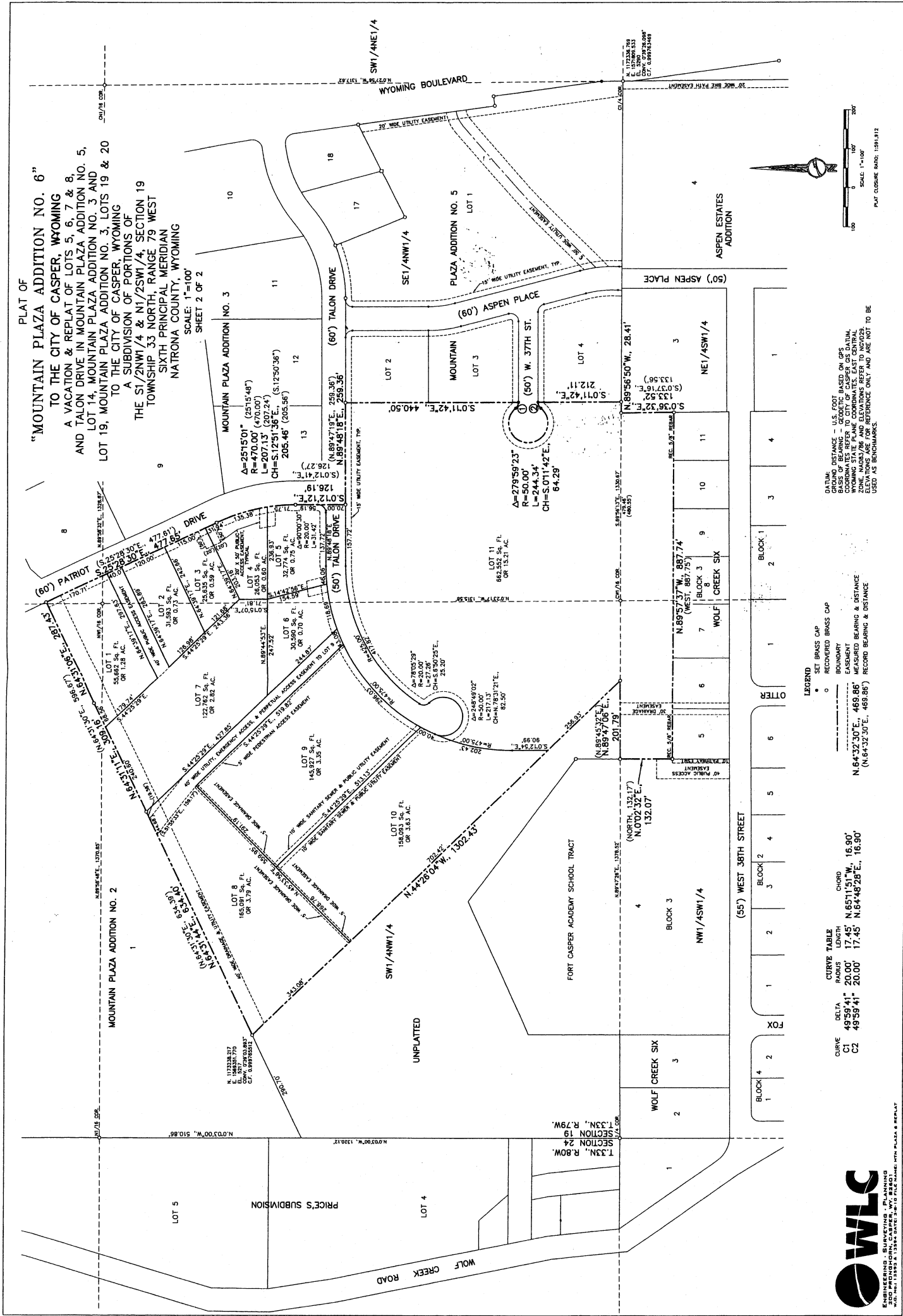


PLAT OF
"MOUNTAIN PLAZA ADDITION NO. 6"
 TO THE CITY OF CASPER, WYOMING
 A VACATION & REPLAT OF LOTS 5, 6, 7 & 8,
 AND TALON DRIVE IN MOUNTAIN PLAZA ADDITION NO. 5,
 LOT 14, MOUNTAIN PLAZA ADDITION NO. 3 AND
 LOT 19, MOUNTAIN PLAZA ADDITION NO. 3, LOTS 19 & 20
 TO THE CITY OF CASPER, WYOMING
 A SUBDIVISION OF PORTIONS OF
 THE S1/2NW1/4 & N1/2SW1/4, SECTION 19
 TOWNSHIP 33 NORTH, RANGE 79 WEST
 SIXTH PRINCIPAL MERIDIAN
 NATRONA COUNTY, WYOMING

SCALE: 1"=100'
 SHEET 2 OF 2

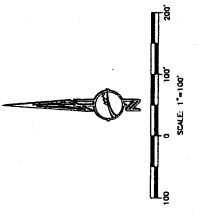


DATUM: DISTANCE - U.S. FOOT
 BASIS OF BEARING - GEODETIC BASED ON GPS
 COORDINATES REFER TO CITY OF CASPER GE DATUM
 ZONE, NAD83/86 AND ELEVATIONS REFER TO NAVD83
 ELEVATIONS ARE FOR REFERENCE ONLY AND ARE NOT TO BE
 USED AS BENCHMARKS.

LEGEND
 • SET BRASS CAP
 ○ RECOVERED BRASS CAP
 --- BOUNDARY
 --- EASEMENT
 --- MEASURED BEARING & DISTANCE
 (N.64°32'30"E., 465.86'
 (N.64°32'30"E., 465.86')

CURVE TABLE

CURVE	DELTA	RADIUS	LENGTH	CHORD
C1	49°59'41"	20.00'	17.45'	N.65°11'51"W., 16.90'
C2	49°59'41"	20.00'	17.45'	N.64°48'28"E., 16.50'



PLAT COURSE NO.: 1581312