

SURVEYOR'S CERTIFICATE:

STATE OF WYOMING } ss.
COUNTY OF NATRONA }
This is to certify that the survey and subdivision of Blocks Numbers 38, 39, 40, 41, 42, 43, 44, 45, 46, 47 and an additional part to Block Number 10, all being an addition to MOUNTAIN VIEW SUBURB, and as shown on annexed plat, comprising parts of the Southeast One-quarter of the Southwest One-quarter (S.E. 1/4 S.W. 1/4), the West One-half of the Southeast One-quarter (W. 1/2 S.E. 1/4), and the Northeast One-quarter of the Southeast One-quarter (N.E. 1/4 S.E. 1/4), all of Section One (1), Township Thirty-three North (T. 33 N.), Range Eighty West (R. 80 W.) of the Sixth Principal Meridian (6th P.M.), located in County of Natrona, State of Wyoming, was made by me during January and February, A.D. 1924 for the MOUNTAIN VIEW DEVELOPMENT COMPANY at the request of H.E. Grude and H.W. Baker, both of Casper, Wyoming.

The annexed plat shows the actual record and results of said survey and subdivision, as indicated by these blocks (shown as shaded) and lots drawn in solidly-lined lines on plat. These blocks and lots shown in dashed lines represent previous plattings.

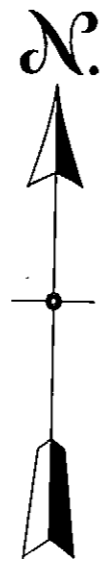
This survey was executed with surveyor's standard transit and steel tape. Each black corner was marked with a 4"x4" pine post set 18" in the ground, top faced, painted white, and with the appropriate black number painted thereon in black. Where black corners are rounded by a small radius (20" to 50") curve, a 4"x4" post same as above described was set at both ends of such small radius curve. These latter are indicated by small circles on plat.

All other lot corners were marked with 1 1/2" oak stakes, driven 12" in ground, and painted white. Those bordering street-lines were also faced and marked in black. In all cases where rear lot stakes fall on curves or irregular lines, these were also properly worked in black. Similar 1 1/2" oak stakes were also set along the borders of the Mountain View Park, as indicated by small circles on plat.

All section, quarter, and 1/4-corners shown on plat were previously established, recognized corners, and were marked on the ground as noted on plat. All bearings, angles and distances shown on plat were measured in the field with care, checked by computations, and are correct as shown, to the best of my knowledge and belief.

Witness my hand and seal, this 19th day of March, A.D. 1924.
Engineer's License No. 30.
State of Wyoming.

Wilbur H. Fisher
Surveyor.



PLAT OF
BLOCKS: NUMBERS 38, 39, 40, 41, 42, 43, 44, 45, 46, 47 AND PART OF BLOCK No. 15;
—BEING AN ADDITION TO—
MOUNTAIN VIEW SUBURB,
A SUBDIVISION OF PARTS OF THE S.E. 1/4 S.W. 1/4, W. 1/2 S.E. 1/4,
AND N.E. 1/4 S.E. 1/4 OF SECTION 1, T. 33 N., R. 80 W. OF 6th P.M.
NATRONA COUNTY, WYOMING.

SCALE: 1" = 100' H.L.
PARK & FISHER, CIVIL ENGINEERS, CASPER, WYOMING.

Checked and approved March 15, 1924.
Albert Park
County Surveyor.

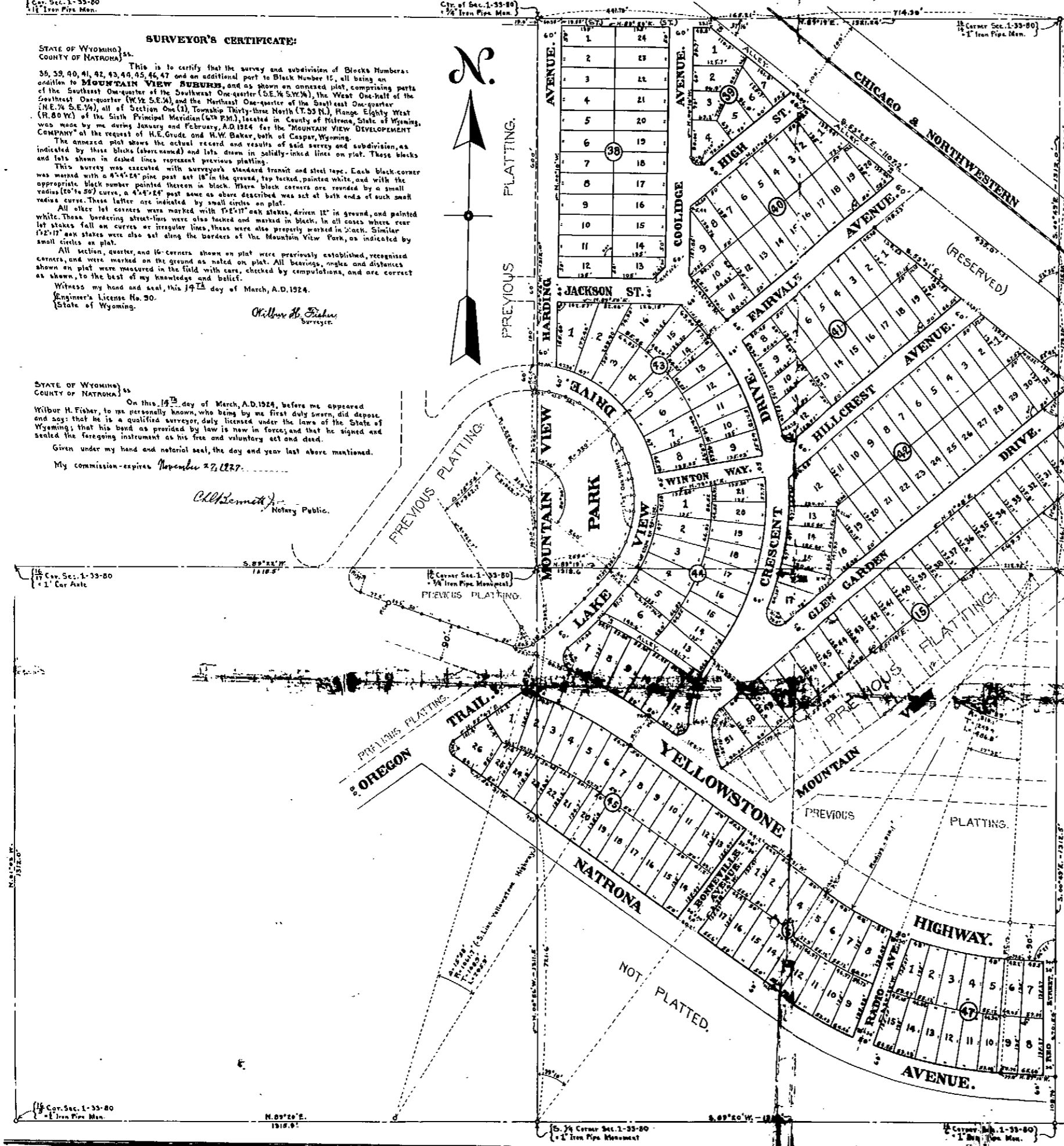
STATE OF WYOMING } ss.
COUNTY OF NATRONA }
I, *Albert Park*, County Surveyor, do hereby certify that the above described plat is a true and correct copy of the original on file in my office.

1415

STATE OF WYOMING } ss.
COUNTY OF NATRONA }
On this 19th day of March, A.D. 1924, before me appeared Wilbur H. Fisher, to me personally known, who being by me first duly sworn, did depose and say that he is a qualified surveyor, duly licensed under the laws of the State of Wyoming; that his bond as provided by law is now in force; and that he signed and sealed the foregoing instrument as his free and voluntary act and deed.

Given under my hand and notarial seal, the day and year last above mentioned.
My commission expires November 27, 1927.

Chas. Bennett
Notary Public.



DEDICATION:

STATE OF WYOMING } ss.
COUNTY OF NATRONA }
This is to certify that the above named subdivision of parts of the Southeast One-quarter of the Southeast One-quarter (S.E. 1/4 S.W. 1/4), the West One-half of the Southeast One-quarter (W. 1/2 S.E. 1/4), and the Northeast One-quarter of the Southeast One-quarter (N.E. 1/4 S.E. 1/4), of Section One (1), Township Thirty-three North (T. 33 N.), Range Eighty West (R. 80 W.) of the Sixth Principal Meridian (6th P.M.), located in County of Natrona, State of Wyoming, as shown on the above described plat, containing Lots numbered consecutively from One (1) to Fifty-one (51) inclusive, Lots numbered consecutively from One (1) to Seven (7) both inclusive; Block Forty-one (41) containing Lots numbered consecutively from One (1) to Twenty (20) both inclusive; Block Forty-two (42) containing Lots numbered consecutively from One (1) to Thirty-one (31) both inclusive; Block Forty-three (43) containing Lots numbered consecutively from One (1) to Twenty-one (21) both inclusive; Block Forty-four (44) containing Lots numbered consecutively from One (1) to Twenty-two (22) both inclusive; Block Forty-five (45) containing Lots numbered consecutively from One (1) to Twenty-three (23) both inclusive; Block Forty-six (46) containing Lots numbered consecutively from One (1) to Twenty-four (24) both inclusive; Block Forty-seven (47) containing Lots numbered consecutively from One (1) to Twenty-five (25) both inclusive; and part of Block Fifteen (15) containing added Lots numbered consecutively from One (1) to Fifteen (15) both inclusive; Said subdivision being known as an addition to MOUNTAIN VIEW SUBURB, is with the free consent and in accordance with the desires of the undersigned owner and proprietor, the MOUNTAIN VIEW DEVELOPMENT COMPANY, a corporation duly organized and existing under and by virtue of the laws of the State of Wyoming.

All parks, streets, avenues, ways, drives, highways, trails and alleys shown on the annexed plat are hereby dedicated to the Public.

In witness whereof, the said "MOUNTAIN VIEW DEVELOPMENT COMPANY" has caused these presents to be signed in its corporate name by its President, to be attested by its Secretary and its Corporate Seal to be duly affixed by authority of its Board of Directors, this 14th day of March, A.D. 1924.

Witnessed by:
W. H. Fisher
By: *H. E. Grude*
Its President.
H. W. Baker
Attest: *W. H. Fisher*
Its Secretary.

STATE OF WYOMING } ss.
COUNTY OF NATRONA }
On this 14th day of March, A.D. 1924, before me appeared H.E. Grude and H.W. Baker, to me personally known, who being by me first duly sworn, did depose and say that they are the President and Secretary respectively of the MOUNTAIN VIEW DEVELOPMENT COMPANY, a Wyoming corporation; that the seal affixed to the foregoing instrument is the corporate seal of said corporation, and that the foregoing instrument was signed and sealed in behalf of said corporation by authority of its board of directors; and the said H.E. Grude and H.W. Baker acknowledge the said instrument to be the free and voluntary act and deed of said corporation.

Given under my hand and notarial seal the day and year last above mentioned.
My commission expires November 27, 1927.

Chas. Bennett
Notary Public.

