

Sheet 8
Folder 5

June 18 63
1963

PLAT OF MOUNTAIN VISTA

A SUBDIVISION

BEING A PORTION OF THE SE 1/4 NW 1/4, SECTION 28
T.33 N., R.79 W. of 6th PRINCIPAL MERIDIAN,
NATRONA COUNTY, WYOMING.

CERTIFICATE OF DEDICATION

MOUNTAIN VISTA, INC., a Wyoming corporation, does hereby certify that the above and foregoing "MOUNTAIN VISTA" a subdivision being a portion of the SE 1/4 NW 1/4, Section 28, Township 33 North, Range 79 West of the 6th Principal Meridian, Natrona County, Wyoming and being more particularly described as follows:

Beginning of the southeasterly corner of said SE 1/4 NW 1/4, Section 28 which corner is also the southeast corner of said subdivision;

Thence from said point of beginning, S.89°51'W., 847.4 feet along the southerly line of said subdivision and SE 1/4 NW 1/4, Section 28 to an intersection with the easterly Right of Way line of Wyoming State Secondary Highway No. 1301; Thence along the easterly Right of Way line of said Highway and the arc of a true curve to the left having a radius of 2939.8 feet, through the chord of said arc, N.4°50'E., 455.1 feet to a point of tangency; Thence continuing along said Right of Way line, N.0°23'E., 654.35 feet to the northwest corner of said subdivision; Thence N.89°50'E., 801.0 feet to the northeast corner of said subdivision and a point on the easterly line of said SE 1/4 NW 1/4, Section 28; Thence S.0°10'E., 1107.6 feet along the easterly line of said subdivision and SE 1/4 NW 1/4, Section 28, to the south-easterly corner thereof and the point of beginning, containing 20.64 Acres;

as appears on this plat is with the free consent and in accordance with the desire of the undersigned owner and proprietor, wherein all Streets together with the Public Park are hereby dedicated to the use of the public.

IN WITNESS WHEREOF, this Certificate has been executed by MOUNTAIN VISTA, INC., a Wyoming corporation, this _____ day of _____, 1963.

MOUNTAIN VISTA, INC.
a Wyoming corporation.

ATTEST: _____
SECRETARY

By: _____
PRESIDENT

STATE OF WYOMING
COUNTY OF NATRONA

On this _____ day of _____, 1963, before me personally appeared Herbert L. Harvey, to me personally known, who, being by me first duly sworn, did say that he is the president of MOUNTAIN VISTA, INC., a Wyoming corporation, that the seal affixed to said instrument is the corporate seal of said corporation, and that said instrument was signed and sealed in behalf of said corporation by authority of its Board of Directors; and said Herbert L. Harvey acknowledged said instrument to be the free act and deed of said corporation.

My commission expires _____

NOTARY PUBLIC

CERTIFICATE OF SURVEYOR

STATE OF WYOMING
COUNTY OF NATRONA

I, E. C. Lenhart of Casper, Wyoming do hereby certify that this plat was prepared from notes taken during an actual survey made by me, commenced on September 10 and completed on September 18, 1962, and that such plat correctly represents such survey and is true and correct to the best of my knowledge and belief; all corners are well and properly set iron pipe and identified. All dimensions are expressed in feet and decimals thereof and the bearings referred to the true meridian.

Wyoming Registration No. 520, P.E. & L.S. E. C. Lenhart
E. C. LENHART, LAND SURVEYOR.

Subscribed in my presence and sworn to before me this 21st day of November, 1962.

My commission expires May 27th, 1965.

Gene Jansing
NOTARY PUBLIC

PLAT APPROVED

Approved by the Community Planning Commission of Casper, Wyoming this 26 day of Feb 1963, and forwarded to the City Council of Casper, Wyoming with recommendation that said plat be approved.

Chairman Frank P. Rieck

Secretary David L. Van Wert

Approved by the City Council, City of Casper, Wyoming by Resolution (Ordinance) No. 63-14 duly passed, adopted and approved on the 18th day of March, 1963.

Myron W. Cota
MAYOR

Approved by the Board of County Commissioners of Natrona County, Wyoming by Resolution duly passed on the _____ day of _____, 1963.

James B. Russell
CHAIRMAN OF BOARD

Attest: _____
CITY CLERK

Attest: _____
COUNTY CLERK, SECRETARY OF BOARD

Inspected and approved on this 4th day of March, 1963.

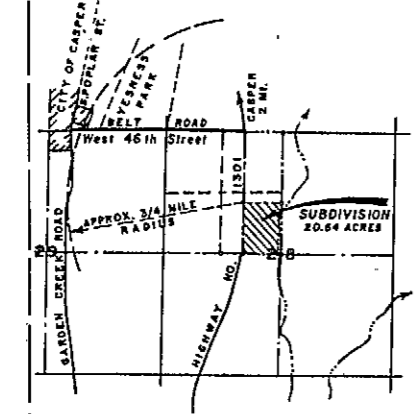
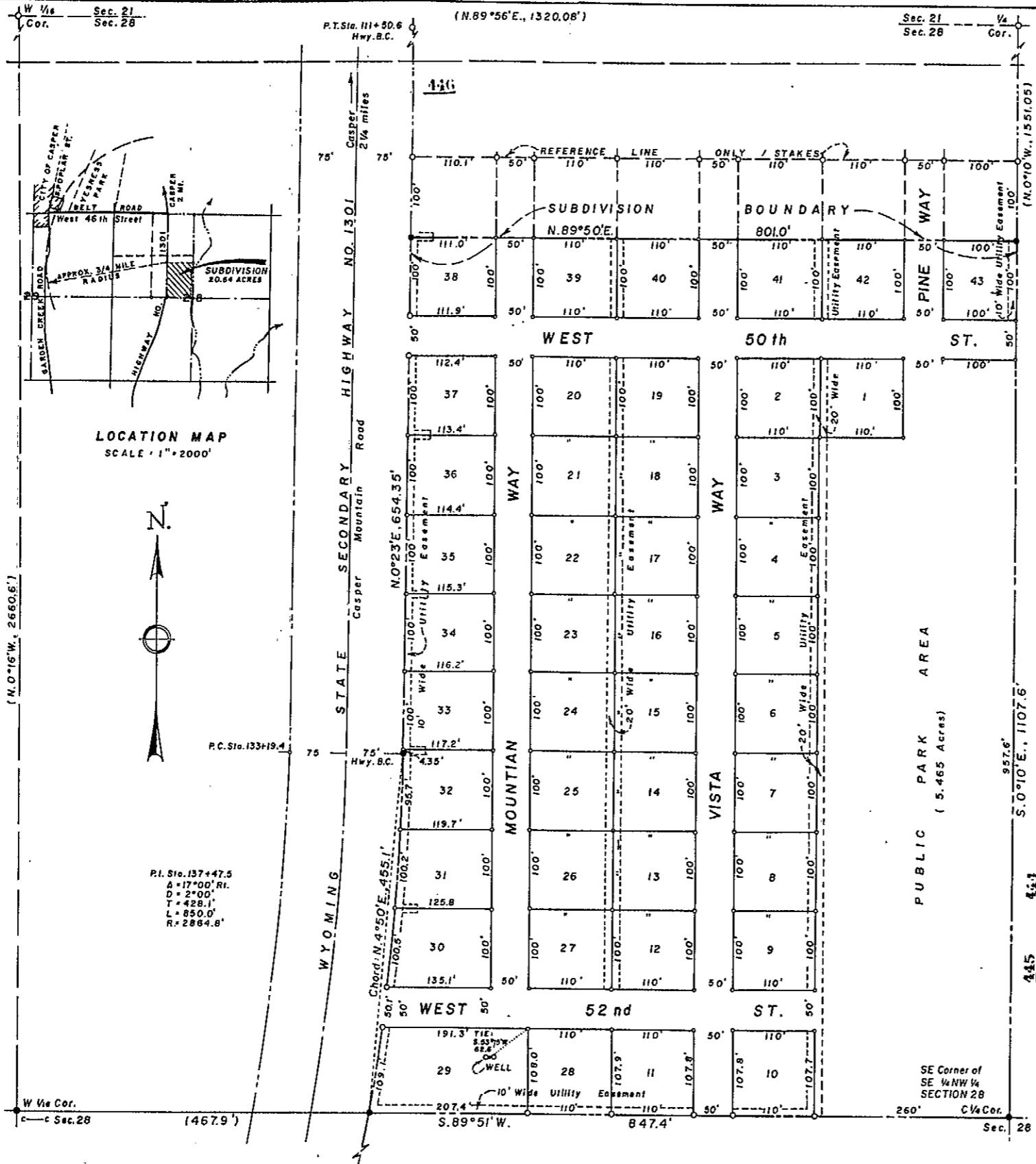
Emrick Huber
CITY ENGINEER

Inspected and approved on this 13 day of May, 1963.

George P. Hughes
COUNTY SURVEYOR

Filed for record in the Office of the County Clerk of Natrona County, Wyoming, on this _____ day of _____, 1963.

COUNTY CLERK



P.I. Sta. 137+47.5
A = 17°00' RI.
D = 2°00'
T = 428.1'
L = 850.0'
R = 2884.8'

SE 1/4 NW 1/4, SECTION 28
T.33 N., R.79 W. of 6th PRINCIPAL MERIDIAN
NATRONA COUNTY, WYOMING.

SCALE: 1" = 80'



ATLAS REPRODUCTION

SURVEY AND PLAT BY:
WORTHINGTON, LENHART & ASSOCIATES, INC.
200 South Lowell St., Casper, Wyoming.
W.O. No. 7-13-B November 17, 1962