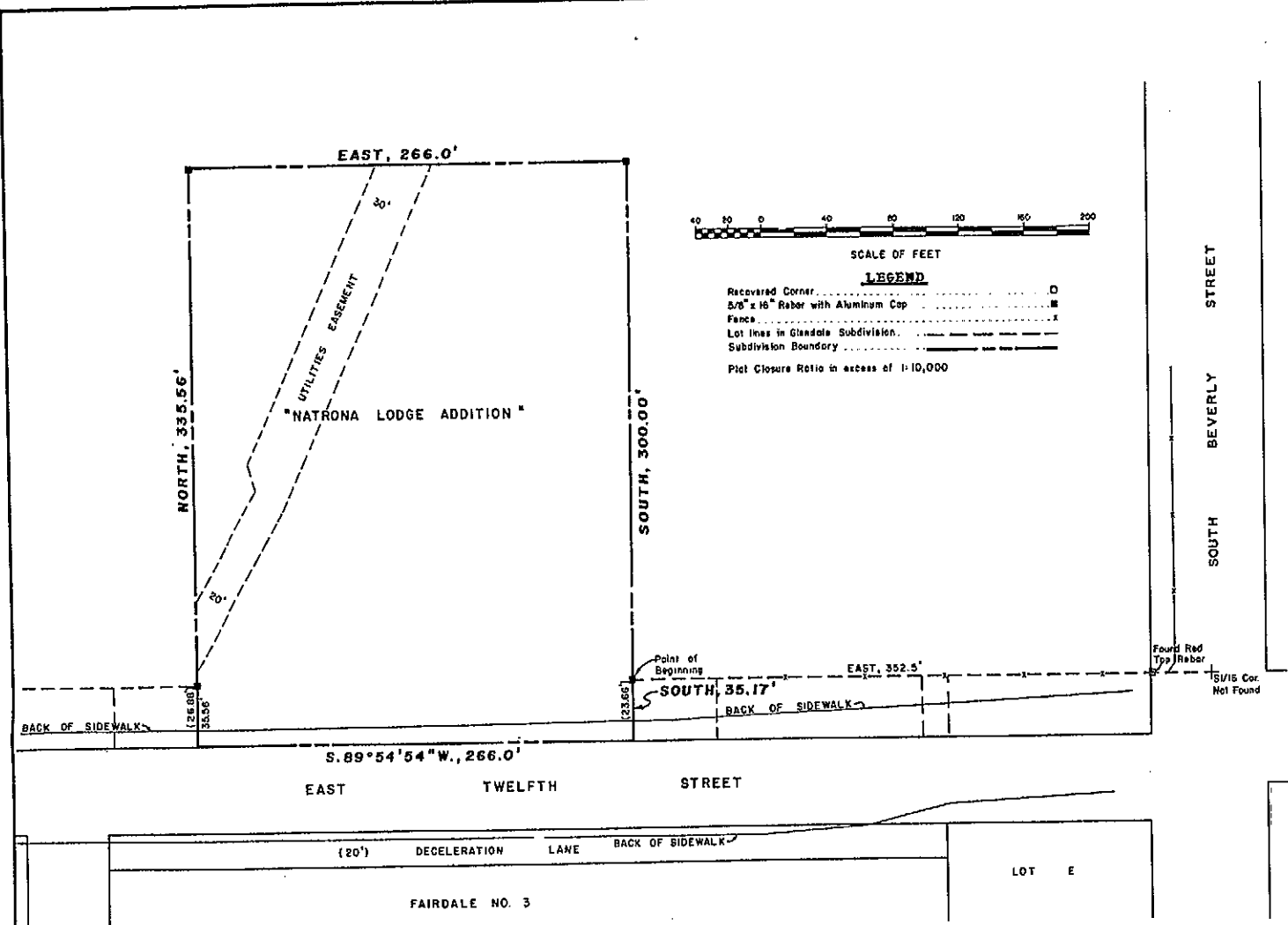


383351

1451

383351

Natrona Lodge Addn. 1451
January 25, 1985
383351



PLAT OF
"NATRONA LODGE ADDITION"
 A REPLAT OF
 BLOCK "C" GLENDALE ADDITION
 AND
 A PORTION OF THE NE1/4 SE1/4, SECTION 10
 TOWNSHIP 33 NORTH, RANGE 79 WEST
 SIXTH PRINCIPAL MERIDIAN
 NATRONA COUNTY, WYOMING
 SCALE: 1" = 40'

CERTIFICATE OF DEDICATION

THE COUNTY OF NATRONA, a Body Corporate and a Political Subdivision of the State of Wyoming, hereby certifies that it is the owner and proprietor of the foregoing subdivision located in and being a portion of the NE1/4 SE1/4, Section 10, Township 33 North, Range 79 West of the Sixth Principal Meridian, Natrona County, Wyoming, and all of Block "C", Glendale Addition, all of which is more particularly described by metes and bounds as follows, to wit:

Beginning at the northeast corner of Lot 2, Block "C", Glendale Addition, from which the S1/6 corner common to Sections 10 and 11 bears EAST, 352.5 feet; thence SOUTH, 35.17 feet to the southeast corner of Lot 2, Block "C", Glendale Addition and the southeast corner of the parcel being described; thence S.89°54'54"W., 266.0 feet to the southwest corner of Lot 1, Block "C", Glendale Addition and the southeast corner of the parcel being described; thence NORTH, 335.56 feet to the northwest corner of said parcel; thence EAST, 266.0 feet to the northeast corner of said parcel; thence SOUTH, 300.0 feet more or less, to the point of beginning and encompassing an area of 2.05 acres, more or less.

The subdivision of the foregoing described lands as appears on this plat is with free consent and in accordance with the desires of the undersigned owners and proprietors; the name of said subdivision shall be "NATRONA LODGE ADDITION" an Addition to the City of Casper, Wyoming. That portion of Twelfth Street lying within said Addition is hereby dedicated to the use of the public. All easements shown hereon are hereby reserved for purposes of construction, operation and maintenance of utility lines, ditches and conduits.

Date at Casper, Wyoming this 7th day of September, 1984.
 THE COUNTY OF NATRONA
 County Clerk: John L. Schultz
 Chairman of the Board of County Commissioners

ACKNOWLEDGEMENT

STATE OF WYOMING } ss
 COUNTY OF NATRONA } ss
 The foregoing instrument was acknowledged before me by Frank L. Schultz on this 7th day of September, 1984.
 Witness my hand and official seal.
 My commission expires April 1, 1987
John L. Schultz
 NOTARY PUBLIC

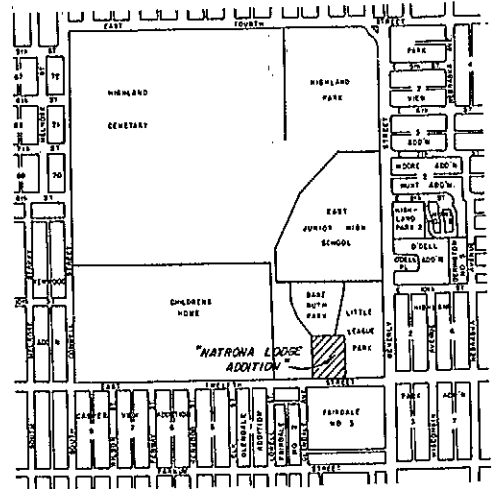
APPROVALS

APPROVED: Community Planning Commission of Casper, Wyoming this 12th day of December, 1984 and forwarded to the City Council of Casper, Wyoming with recommendation that said Plat be approved.
Frank L. Schultz SECRETARY
Commission Chairman
 APPROVED: City Council of the City of Casper, Wyoming by Resolution No. 85-6, duly passed, adopted and approved on the 2nd day of January, 1984.
 Attest: Catherine C. Libbey CITY CLERK
Mayor MAYOR
 APPROVED: Board of County Commissioners of Natrona County, Wyoming by Resolution duly passed on the 18 day of Sept, 1984.
 Attest: John L. Schultz CHAIRMAN OF THE BOARD
James E. Cook CITY ENGINEER
 INSPECTED AND APPROVED on the 2 day of Jan, 1984.
 INSPECTED AND APPROVED on the 1st day of September, 1984.
 INSPECTED AND APPROVED on the 31st day of August, 1984.
 Filed for Record in the office of the County Clerk of Natrona County, Wyoming this 15 day of September, 1984.
John L. Schultz COUNTY CLERK

CERTIFICATE OF SURVEYOR

STATE OF WYOMING } ss
 COUNTY OF NATRONA } ss
 I, Donald R. Horton, a Professional Engineer and Land Surveyor of Casper, Wyoming hereby certify that this Plat was prepared from notes taken during an actual survey made by me during the month of June 1984 and that this plat correctly represents said survey. All bearings are referred to the true meridian and all dimensions are expressed in feet and decimals thereof. Said Plat is true and correct to the best of my knowledge and belief.
 Wyoming Registration No. 677 P.E. & L.S.
Donald R. Horton
 DONALD R. HORTON

Subscribed in my presence and sworn to before me by Donald R. Horton on this 28th day of August, 1984.
Chris Anderson Notary Public
 My Commission Expires August 21, 1987
 Notary Public



Survey and Plat by
 THE NATRONA COUNTY SURVEYORS OFFICE
 616 Wyoming Blvd., Mills, Wyoming
 Date: August 23, 1984