

**940857**

**CERTIFICATE OF DEDICATION**

STATE OF WYOMING }  
 COUNTY OF NATRONA } SS

THE UNDERSIGNED RANDY AND RITA BUTLER, DO HEREBY CERTIFY THAT THEY ARE THE OWNERS AND PROPRIETORS OF A PORTION OF THE NESE1/4 OF SECTION 28, T.34N., R.80W., NATRONA COUNTY, WYOMING, ALSO KNOWN AS LOT 1, MEMORIAL GARDENS, INC. SIMPLE SUBDIVISION NO. 3, BEING MORE PARTICULARLY DESCRIBED AS FOLLOWS:

COMMENCING AT THE NORTHWEST CORNER OF SAID LOT 1, BEING THE C-E1/16 CORNER OF SAID SECTION 28, MONUMENTED BY A BRASS CAP AND BEING THE POINT OF BEGINNING.

THENCE N88°14'41"E, ALONG THE NORTH LINE OF SAID LOT 1, ALSO BEING THE NORTH LINE OF THE NE1/4SE1/4 OF SAID SECTION 28, A DISTANCE OF 664.36 FEET TO A POINT, MONUMENTED BY AN ALUMINUM CAP.

THENCE N87°25'17"E, ALONG THE NORTH LINE OF SAID LOT 1, ALSO BEING THE NORTH LINE OF THE NE1/4SE1/4 OF SAID SECTION 28, A DISTANCE OF 53.07 FEET TO THE NORTHEAST CORNER OF SAID LOT 1, MONUMENTED BY AN ALUMINUM CAP.

THENCE S00°08'28"W, ALONG THE EAST LINE OF SAID LOT 1, ALSO BEING THE WEST LINE OF LOT 2, MEMORIAL GARDENS, INC. SIMPLE SUBDIVISION NO. 3, A DISTANCE OF 126.00 FEET TO A POINT MONUMENTED BY AN ALUMINUM CAP.

THENCE S12°45'19"W, ALONG THE EAST LINE OF SAID LOT 1, ALSO BEING THE WEST LINE OF LOT 2, MEMORIAL GARDENS, INC. SIMPLE SUBDIVISION NO. 3, A DISTANCE OF 187.08 FEET TO A POINT MONUMENTED BY AN ALUMINUM CAP.

THENCE S00°09'28"W, ALONG THE EAST LINE OF SAID LOT 1, ALSO BEING THE WEST LINE OF LOT 2, MEMORIAL GARDENS, INC. SIMPLE SUBDIVISION NO. 3, A DISTANCE OF 53.50 FEET TO THE SOUTHWEST CORNER OF THE PARCEL, MONUMENTED BY AN ALUMINUM CAP.

THENCE S89°12'09"W, ALONG THE SOUTH LINE OF SAID LOT 1, ALSO BEING THE NORTH LINE OF LOT 2, MEMORIAL GARDENS, INC. SIMPLE SUBDIVISION NO. 3, A DISTANCE OF 12.00 FEET TO A POINT MONUMENTED BY AN ALUMINUM CAP.

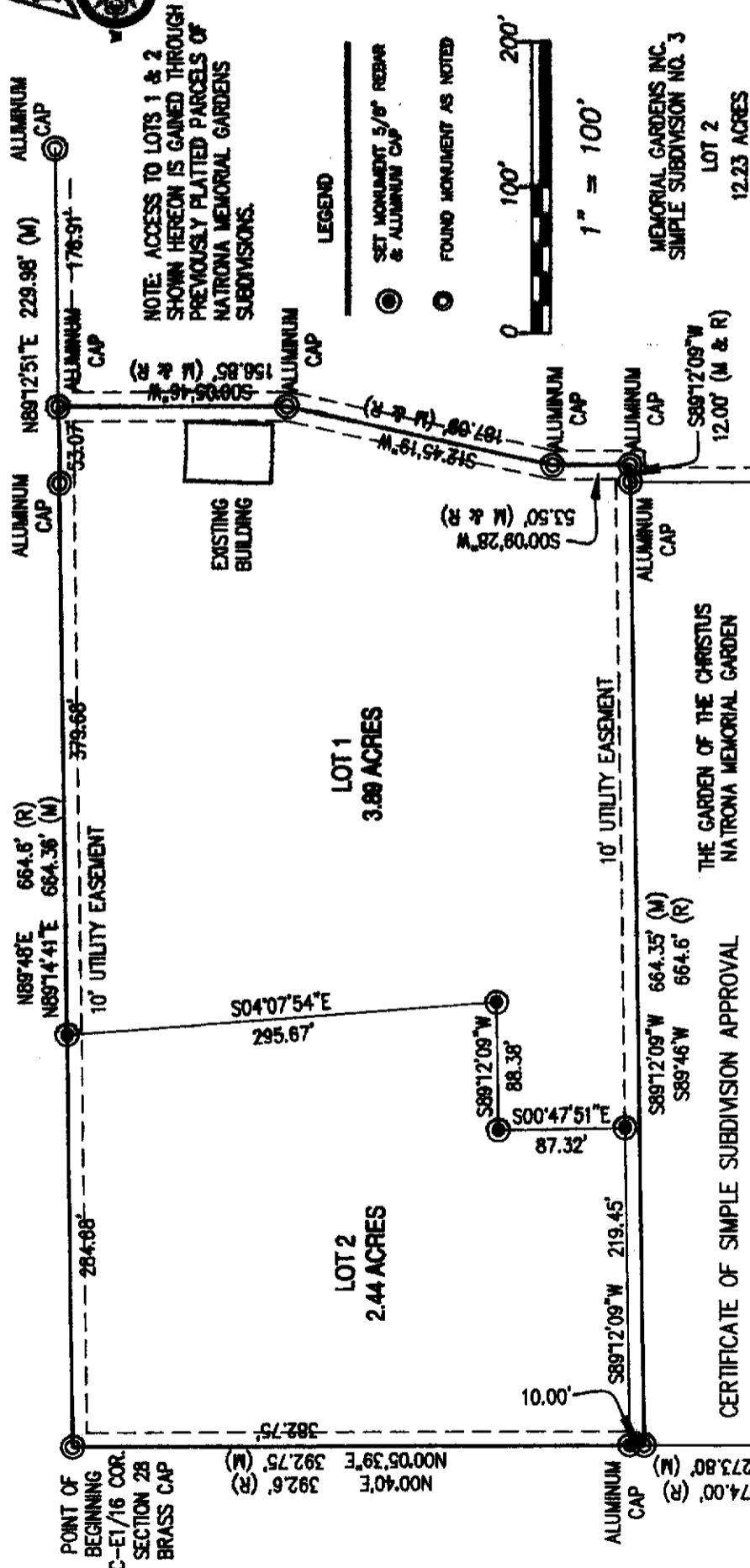
THENCE S89°12'09"W, ALONG THE SOUTH LINE OF THE PARCEL AND OF SAID LOT 1, A DISTANCE OF 664.35 FEET TO THE SOUTHWEST CORNER OF THE PARCEL, MONUMENTED BY AN ALUMINUM CAP.

THENCE N00°05'39"E, ALONG THE WEST LINE OF SAID LOT 1, A DISTANCE OF 392.75 FEET TO THE POINT OF BEGINNING.

THE ABOVE DESCRIBED TRACT OF LAND CONTAINS 8.33 ACRES, MORE OR LESS, AND IS SUBJECT TO ANY RIGHTS-OF-WAY AND/OR EASEMENTS, RESERVATIONS AND ENCUMBRANCES WHICH HAVE BEEN LEGALLY ACQUIRED.

VACATION AND REPLAT OF  
 LOT 1, MEMORIAL GARDENS, INC. SIMPLE SUBDIVISION NO. 3  
 AS

NATRONA MEMORIAL GARDENS SIMPLE SUBDIVISION NO. 2  
 A PORTION OF THE NE1/4SE1/4 SECTION 28, T.34N., R.80W.  
 NATRONA COUNTY, WYOMING  
 W.O. #12-236



NOTE: ACCESS TO LOTS 1 & 2 SHOWN HEREON IS GAINED THROUGH PREVIOUSLY PLATTED PARCELS OF NATRONA MEMORIAL GARDENS SUBDIVISIONS.

LEGEND  
 ● SET MONUMENT 5/8" REBAR & ALUMINUM CAP  
 ○ FOUND MONUMENT AS NOTED



**CERTIFICATE OF OWNER**

THE UNDERSIGNED RANDY AND RITA BUTLER, DO HEREBY CERTIFY THAT THEY ARE THE OWNERS AND PROPRIETORS OF A PORTION OF THE NE1/4SE1/4 OF SECTION 28, T.34N., R.80W., NATRONA COUNTY, WYOMING.

THE TRACT OF LAND AS IT APPEARS ON THIS PLAT IS DEDICATED WITH THE FREE CONSENT AND IN ACCORDANCE WITH THE DESIRES OF THE UNDERSIGNED OWNERS AND PROPRIETORS. THE NAME OF THE SIMPLE SUBDIVISION SHALL BE "NATRONA MEMORIAL GARDENS".

THE SIMPLE SUBDIVISION NO. 2 BEING A VACATION AND REPLAT OF LOT 2, MEMORIAL GARDENS, INC. SIMPLE SUBDIVISION NO. 3 AND THAT SAID OWNERS AND PROPRIETORS HEREBY WYVE AND RELINQUISH ALL RIGHTS GRANTED UNDER AND BY WRIT OF THE HOMESTEAD EXEMPTION LAWS OF THE STATE OF WYOMING.

RANDY & RITA BUTLER  
 P.O. BOX 827  
 HELLS BROTHERS  
 NATRONA COUNTY, WYOMING

RITA BUTLER, OWNER  
 THE FOREGOING INSTRUMENT WAS ACKNOWLEDGED BEFORE ME BY RANDY AND RITA BUTLER, OWNER, THIS 12th DAY OF OCTOBER, 2012.

WITNESS MY HAND AND OFFICIAL SEAL BY COMMISSION EXPIRES 11/11/12  
 NOTARY PUBLIC

**CERTIFICATE OF SURVEYOR**

I, DO HEREBY CERTIFY THAT THIS SIMPLE SUBDIVISION HAS BEEN EXAMINED BY ME AND FOUND TO COMPLY WITH THE REGULATIONS FOR NATRONA COUNTY, WYOMING, AND IS THEREFORE, APPROVED FOR RECORDING.

WILLIAM R. FAUBER  
 5528  
 NATRONA COUNTY, WYOMING

WILLIAM R. FAUBER  
 5528  
 NATRONA COUNTY, WYOMING

KNOW ALL MEN BY THESE PRESENTS THAT I, WILLIAM R. FAUBER, DO HEREBY CERTIFY THAT I PREPARED THIS PLAT FROM AN ACTUAL AND ACCURATE SURVEY OF THE LAND AND THAT THE CORNER MONUMENTS SHOWN HEREON WERE PROPERLY PLACED UNDER MY DIRECT SUPERVISION IN ACCORDANCE WITH THE SUBDIVISION REGULATIONS OF NATRONA COUNTY.

THE FOREGOING INSTRUMENT WAS ACKNOWLEDGED BEFORE ME BY WILLIAM R. FAUBER THIS 12th DAY OF OCTOBER, 2012.

WITNESS MY HAND AND OFFICIAL SEAL BY COMMISSION EXPIRES 11/11/12  
 NOTARY PUBLIC

**CERTIFICATE OF SURVEYOR**

I, DO HEREBY CERTIFY THAT THIS SIMPLE SUBDIVISION HAS BEEN EXAMINED BY ME AND FOUND TO COMPLY WITH THE REGULATIONS FOR NATRONA COUNTY, WYOMING, AND IS THEREFORE, APPROVED FOR RECORDING.

WILLIAM R. FAUBER  
 5528  
 NATRONA COUNTY, WYOMING

WILLIAM R. FAUBER  
 5528  
 NATRONA COUNTY, WYOMING

KNOW ALL MEN BY THESE PRESENTS THAT I, WILLIAM R. FAUBER, DO HEREBY CERTIFY THAT I PREPARED THIS PLAT FROM AN ACTUAL AND ACCURATE SURVEY OF THE LAND AND THAT THE CORNER MONUMENTS SHOWN HEREON WERE PROPERLY PLACED UNDER MY DIRECT SUPERVISION IN ACCORDANCE WITH THE SUBDIVISION REGULATIONS OF NATRONA COUNTY.

THE FOREGOING INSTRUMENT WAS ACKNOWLEDGED BEFORE ME BY WILLIAM R. FAUBER THIS 12th DAY OF OCTOBER, 2012.

WITNESS MY HAND AND OFFICIAL SEAL BY COMMISSION EXPIRES 11/11/12  
 NOTARY PUBLIC

**CERTIFICATE OF SURVEYOR**

I, DO HEREBY CERTIFY THAT THIS SIMPLE SUBDIVISION HAS BEEN EXAMINED BY ME AND FOUND TO COMPLY WITH THE REGULATIONS FOR NATRONA COUNTY, WYOMING, AND IS THEREFORE, APPROVED FOR RECORDING.

WILLIAM R. FAUBER  
 5528  
 NATRONA COUNTY, WYOMING

WILLIAM R. FAUBER  
 5528  
 NATRONA COUNTY, WYOMING

KNOW ALL MEN BY THESE PRESENTS THAT I, WILLIAM R. FAUBER, DO HEREBY CERTIFY THAT I PREPARED THIS PLAT FROM AN ACTUAL AND ACCURATE SURVEY OF THE LAND AND THAT THE CORNER MONUMENTS SHOWN HEREON WERE PROPERLY PLACED UNDER MY DIRECT SUPERVISION IN ACCORDANCE WITH THE SUBDIVISION REGULATIONS OF NATRONA COUNTY.

THE FOREGOING INSTRUMENT WAS ACKNOWLEDGED BEFORE ME BY WILLIAM R. FAUBER THIS 12th DAY OF OCTOBER, 2012.

WITNESS MY HAND AND OFFICIAL SEAL BY COMMISSION EXPIRES 11/11/12  
 NOTARY PUBLIC

BEARING BASIS:  
 STATE PLANE COORDINATE SYSTEM  
 EAST CENTRAL ZONE  
 CLOSURE EXCEEDS 1:200,364.



Civil Engineering Professionals, Inc.  
 6000 Eisenhower Drive, Casper, WY 82409  
 Phone 307.266.4946 Fax 307.266.0108  
 www.cepi-casper.com

SAM FAUBER  
 Notary Public  
 Natrona County, Wyoming  
 My Commission Expires 11/11/12

SAM FAUBER  
 Notary Public  
 Natrona County, Wyoming  
 My Commission Expires 11/11/12